

5449066 361/18

SEP 30 1993

Mr. Brent Hazen
Fort Dodge Chemical, Inc.
P. O. Box 2021
Lompoc, CA 93438

Dear Mr. Hazen:

Subject: Pearson's Rat Poison
EPA Registration No.: 322-8
Your Letter Dated September 16, 1993

The labeling referred to above, submitted in connection with registration under the Federal Insecticide, Fungicide and Rodenticide Act (FIFRA), as amended, is acceptable provided:

1. The labeling changes listed below are made before you release the product for shipment:

a. This product is considered a Restricted Use Pesticide. Therefore, the following statement must be placed at the very top of the front panel of the label and no other wording or symbols can appear above this statement.

"RESTRICTED USE PESTICIDE

For Retail sale to and use only be certified applicators or persons under their direct supervision, and only for those uses covered by the certified applicator's certification."

b. In accordance with PR Notice 83-3, the PESTICIDE DISPOSAL statement must be changed to read:

"Pesticide wastes are acutely hazardous. Improper disposal of excess pesticide, spray mixture, or rinsate is a violation of Federal Law. If these wastes cannot be disposed of by use according to label instructions, contact your State Pesticide or Environmental Control Agency, or the Hazardous Waste representative at the nearest EPA Regional Office for guidance."

2. One copy of your final printed labeling is submitted to the Agency before you release the product for shipment.

If these conditions are not complied with, the registration will be subject to cancellation in accordance with FIFRA section 6(e). Your release for shipment of the product bearing the amended labeling constitutes acceptance of these conditions.

MAILED DISK # 2 9/30/93

UNITED STATES ENVIRONMENTAL PROTECTION AGENCY

2 7 5

2

A stamped copy of the labeling is enclosed for your records.

Sincerely yours,

SEP 28 1978

Robert A. Forrest
Product Manager (14)
Insecticide-Rodenticide Branch
Registration Division (H7504C)

enclosure

CONCURRENCES

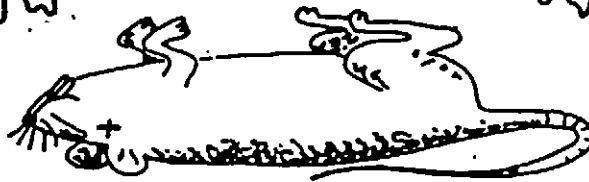
SYMBOL							

395



SAMPLE LABEL

RAT POISON



A FAST-ACTING POISON FOR RATS AND MICE

ACCEPTED with COMMENTS in EPA Letter Dated

SEP 30 1993

Under the Federal Insecticide, Fungicide, and Rodenticide Act as amended, for the pesticide registered under EPA Reg. No.

322-8

ACTIVE INGREDIENT:	
Zinc Phosphide	2.0%
INERT INGREDIENTS:	98.0%
	<u>100%</u>

KEEP OUT OF REACH OF CHILDREN

CAUTION

STATEMENT OF PRACTICAL TREATMENT

* Any persons applying zinc phosphide products and experiencing signs and symptoms such as nausea, abdominal pain, tightness in the chest, or weakness, should see a doctor immediately.

IF SWALLOWED: Immediately call a Poison Control Center or physician, or transport the patient to the nearest hospital. Do not drink water. Do not administer anything by mouth or make the patient vomit unless advised to do so by a physician.

IF IN EYES: Flush with plenty of water. Get medical attention if irritation persists.

IF ON SKIN: Remove contaminated clothing and wash affected areas with soap and water.

See side panel for additional precautionary statements

FORT DODGE CHEMICAL CO.

P.O. Box 2021 • Lompoc, CA 93438 • (805) 736-0065

EPA Est No 322-CA-01 • EPA Reg No 322-8

Net Wt.

BEST AVAILABLE COPY

PRECAUTIONARY STATEMENT

Hazard to Humans and Domestic Animals

CAUTION: May be fatal or harmful if swallowed or inhaled. Do not breathe dust. Avoid Skin Contact. Keep away from children, irresponsible persons, pets and domestic animals. Wear rubber gloves when handling this bait. Wash carefully after using, especially before eating or smoking.

ENVIRONMENTAL HAZARDS

This product is toxic to wildlife. Do not apply when weather conditions favor drift from areas treated. Do not contaminate water by cleaning of equipment or disposal of wastes. Do not apply directly to water. Do not contaminate water by cleaning of equipment or disposal of waste.

DIRECTIONS FOR USE:

It is a violation of Federal Law to use this product in a manner inconsistent with its labeling.

USE RESTRICTIONS:

Rat Bait must be placed in locations not accessible to children, irresponsible persons, pets, domestic animals and wildlife, or in tamper-proof bait boxes. Do not place rat poison in areas where there is a possibility of contaminating food or surfaces that come in direct contact with food. To protect the wildlife scatter bait evenly or hide under cover in runways. In broadcast applications do not apply more than 10 pounds per acre.

DIRECTIONS FOR CONTROL OF RATS AND MICE:

COTTON RATS AND FIELD MICE (Pine, Meadow and White-Footed Mouse)-
Spot or Trail Baiting: Place one teaspoonful of Southland Pearson's Rat Poison in surface trails or at holes leading to underground burrowing systems. Cover bait by pulling overhanging grass back into place. Do not disturb runway systems. Two or three bait spots should be made at the base of infested trees. Baiting should be conducted at the rate of 2-3 pounds per acre. **Broadcast Baiting:** Southland Pearson's Rat Poison may be applied by cyclone seeder or by hand at the rate of 6-10 pounds per acre. When baiting by hand throw tablespoonful amounts into heavy cover along tree rows, rock outcrops, and fence lines. Do not broadcast over growing crops.

HOUSE MOUSE and RATS: Place rounded teaspoonful piles of Southland Pearson's Rat Poison in each rat hole and at 8-10 foot intervals where mice and rats feed, water and travel. **SELECTION OF TREATMENT AREAS -** After removing as much food, water, and harborage as possible, determine dry, acid-free areas where rats and mice will most likely find and consume the bait. Generally, these areas are along walls, gnawed openings, in or beside furrows, in corners and concealed places, between floors and walls or in locations where rats and mice or their signs have been observed. Bait must be placed in locations not accessible to children, pets and domestic animals. Collect and destroy uneaten bait upon completion of control program.

BEST AVAILABLE COPY

STORAGE AND DISPOSAL

Do not contaminate water, food or feed by storage or disposal.

Storage: Do not store near heat or open flame.

PESTICIDE DISPOSAL:

Pesticide, spray mixture, or rinse water that cannot be used according to Federal or approved State procedures under Subtitle C of the Resource Conservation and Recovery Act.

CONTAINER DISPOSAL:

Completely empty container by shaking and tapping sides and bottom to loosen clinging particles. Empty residue into application equipment. Then dispose of container in a sanitary landfill or by incineration if allowed by State and local authorities. Stay away from smoke and fumes.

WARRANTY - CONDITION OF SALE:

DIRECTIONS FOR USE of this product are based on field use and tests believed reliable and should be followed carefully. It is however impossible to eliminate all risks associated with use of this product. Because such factors as weather conditions, foreign material and manner of use for application are all beyond the control of the Seller of this product, such things as crop injury, ineffectiveness or other unintended consequences may result.

ALL SUCH RISKS ARE ASSUMED BY THE BUYER.

Seller warrants that this product conforms to the chemical description on the label and is reasonable fit for the purposes referred to in the directions for use. Seller makes no other warranties, express or implied, including FITNESS OR MERCHANTABILITY. In no case shall the Seller be liable for consequential, special or indirect damages resulting from the use or handling of this product. The foregoing is a condition of sale by the Seller and is accepted as such by the Buyer.

BEST AVAILABLE COPY