

# HI-SINE

## detergent germicide

Huntington Hi-Sine is a detergent germicide that contains iodine complexes. It has a wide range activity and rapidly kills Tubercle bacilli, polio virus and other pathogenic bacteria. Hi-Sine is safe on all flooring surfaces, including conductive flooring. It does not harm rubber, paint, plastic, stainless steel or glass and is excellent for isolation and terminal procedures.

**A.O.A.C. Use Dilution Confirmation Test:**

Kills Salmonella choleraesuis, Staphylococcus aureus, Pseudomonas aeruginosa, Trichophyton interdigitale . . . . . 1:256

**DILUTION 1:256 (one half ounce per gallon)**

**DIRECTIONS**

**USE:** Hi-Sine is recommended for floors, dishes, thermometers, walls, utensils, instruments, receptacles, rubber goods, furniture, and lavatories. Dishes, utensils and food contact surfaces must be rinsed with potable water before reuse.

**APPLICATION:** Hi-Sine is a Double Strength Concentrate. First dilute it with equal parts of water to make a Stock Solution; then use 1 ounce of Stock Solution to each gallon of water. This Standard Dilution, which is the same as 1/2 ounce Hi-Sine in one gallon of water, supplies 75 parts per million titratable iodine. For especially dirty surfaces, make a second application of germicide, or else apply a double strength solution one time. Huntington Hi-Sine is not affected by hard water.

**ACTIVE INGREDIENTS:** Polyethoxy polypropoxy polyethoxy ethanol-iodine complex, 11.30%; Nonylphenoxypoly (ethyleneoxy) ethanol-iodine complex, 10.80% . . . . . 22.10%  
provides 1.92% titratable iodine

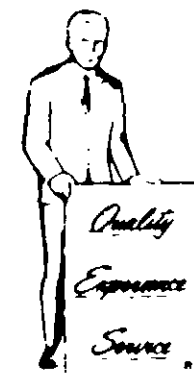
**INERT INGREDIENTS:** . . . . . 77.90%

**CAUTION: KEEP OUT OF REACH OF CHILDREN**

Harmful if swallowed. Avoid contact with eyes and skin. In case of contact, flush with water. If irritation persists, get medical attention. Avoid contamination of foods.

E.P.A. Reg. No. 303-63

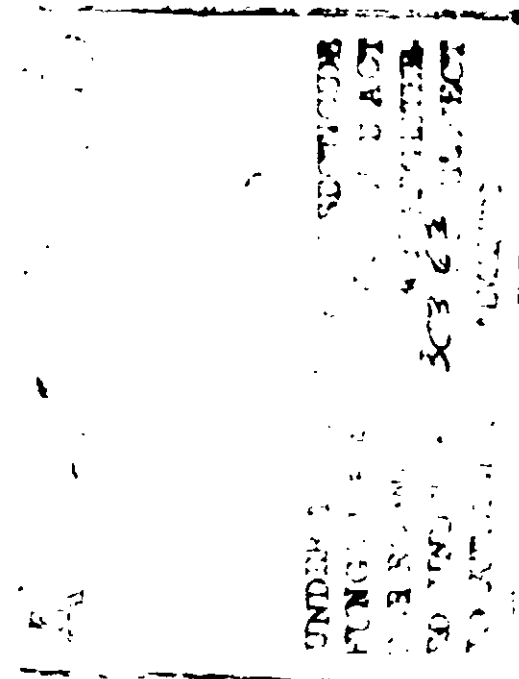
**CONTENTS ONE GALLON** SL-5M-DC11



Where research leads to better products

HUNTINGTON LABORATORIES INC. • P. O. Box 710, Huntington, Indiana 46750

Dallas, Texas 75215 • Lansdale, Pennsylvania 19446 • Bramalea, Ontario LITHO IN U.S.A.



303-63