



UNITED STATES ENVIRONMENTAL PROTECTION AGENCY
WASHINGTON, DC 20460

OFFICE OF CHEMICAL SAFETY
AND POLLUTION PREVENTION

June 21, 2022

Kevin Finnegan
Registration Manager
FMC Corporation
2929 Walnut St.
Philadelphia, PA 19104

Subject: PRIA Label Amendment – Adding claims against resistant bed bugs
Product Name: F9228-2 RTU Insecticide/Miticide
EPA Registration Number: 279-9659
Application Date: 01/31/2022
Decision Number: 581728

Dear Mr. Finnegan:

The amended label referred to above, submitted in connection with registration under the Federal Insecticide, Fungicide, and Rodenticide Act (FIFRA), as amended, is acceptable. This approval does not affect any conditions that were previously imposed on this registration. You continue to be subject to existing conditions on your registration and any deadlines connected with them.

A stamped copy of your labeling is enclosed for your records. This labeling supersedes all previously accepted labeling. You must submit one copy of the final printed labeling before you release the product for shipment with the new labeling. In accordance with 40 CFR 152.130(c), you may distribute or sell this product under the previously approved labeling for 18 months from the date of this letter. After 18 months, you may only distribute or sell this product if it bears this new revised labeling or subsequently approved labeling. "To distribute or sell" is defined under FIFRA section 2(gg) and its implementing regulation at 40 CFR 152.3.

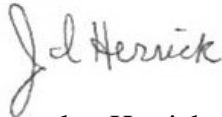
Should you wish to add/retain a reference to the company's website on your label, then please be aware that the website becomes labeling under FIFRA and is subject to review by the Agency. If the website is false or misleading, the product would be misbranded and unlawful to sell or distribute under FIFRA section 12(a)(1)(E). 40 CFR 156.10(a)(5) lists examples of statements EPA may consider false or misleading. In addition, regardless of whether a website is referenced on your product's label, claims made on the website may not substantially differ from those claims approved through the registration process. Therefore, should the Agency find or if it is brought to our attention that a website contains false or misleading statements or claims substantially differing from the EPA approved registration, the website will be referred to the EPA's Office of Enforcement and Compliance.

Page 2 of 2
EPA Reg. No. 279-9659
Decision No. 581728

Your release for shipment of the product constitutes acceptance of these conditions. If these conditions are not complied with, the registration will be subject to cancellation in accordance with FIFRA section 6.

If you have any questions, please contact Jamey Shuler by phone at (202) 566-2898, or via email at Shuler.Jamey@epa.gov.

Sincerely,

A handwritten signature in cursive script that reads "J. Herrick".

Jacquelyn Herrick, Product Manager 03
Invertebrate & Vertebrate Branch 1
Registration Division (7505T)
Office of Pesticide Programs

Enclosure

F9228-2 RTU Insecticide/Miticide

To control listed household pests indoors and around the exterior perimeter of homes.
 [To control bed bugs [and][fleas][other listed pests] indoors.]

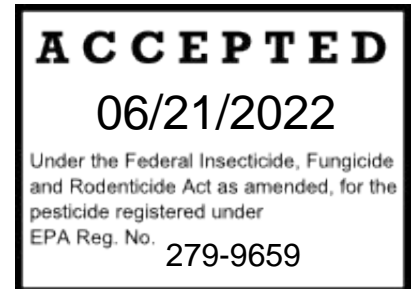
EPA Reg. No. 279-9659

EPA Est. No.: _____

Active Ingredients:	By Wt.
Acetamiprid	0.05 %
Bifenthrin*	0.06 %
Other Ingredients:	<u>99.89 %</u>
.....	100.00 %

This product contains 0.0044 lb. acetamiprid and 0.0053 lb. bifenthrin per gallon.

*Cis isomers 97% minimum, trans isomers 3% maximum.



**KEEP OUT OF REACH OF CHILDREN
CAUTION**

FIRST AID	
If in eyes	-Hold eye open and rinse slowly and gently with water for 15-20 minutes. -Remove contact lenses, if present, after the first 5 minutes, then continue rinsing eye. -Call a poison control center or doctor for treatment advice.
If swallowed	-Call poison control center or doctor immediately for treatment advice. -Have person sip a glass of water if able to swallow. -Do not induce vomiting unless told to do so by the poison control center or doctor. -Do not give anything by mouth to an unconscious person.
If inhaled	-Move person to fresh air. -If person is not breathing, call 911 or an ambulance, then give artificial respiration, preferably by mouth-to-mouth, if possible. -Call a poison control center or doctor for further treatment advice.
If on skin or clothing	-Take off contaminated clothing. -Rinse skin immediately with plenty of water for 15-20 minutes. -Call a poison control center or doctor for treatment advice.
HOTLINE NUMBER	
Have the product container or label with you when calling a poison control center, doctor, or going for treatment. For MEDICAL and TRANSPORTATION Emergencies Call 800-321-1362.	
NOTE TO PHYSICIAN	
This product contains a pyrethroid. If large amounts have been ingested, the stomach and intestine should be evacuated. Treatment is symptomatic and supportive. Digestible fats, oils, or alcohol may increase absorption and so should be avoided. All treatments should be based on observed signs and symptoms of distress in the patient. Overexposure to materials other than this product may have occurred.	
For Information Regarding the Use of this Product Call 800-321-1FMC (1362)	

Net Contents:



FMC Corporation; 2929 Walnut Street; Philadelphia, PA 19104

{Note to Reviewer: Optional language appears in brackets [] and notes to reviewer appear in braces { }. Spanish may be included on final market label. }

PRECAUTIONARY STATEMENTS

Hazards to Humans and Domestic Animals

CAUTION

Causes moderate eye irritation. Harmful if swallowed. Wash thoroughly with soap and water after handling and before eating, drinking, chewing gum, or using tobacco. Remove contaminated clothing and wash before reuse.

Environmental Hazards

This pesticide is extremely toxic to wildlife, fish, and aquatic invertebrates. Drift and run-off from treated areas may be hazardous to aquatic organisms in neighboring areas. Care should be used when spraying to avoid fish and reptile pets in/around ornamental ponds. To protect the environment, do not allow pesticide to enter or run-off into storm drains, drainage ditches, gutters or surface waters. Applying this product in calm weather when rain is not predicted for the next 24 hours will help to ensure that wind or rain does not blow or wash pesticide off the treatment area. Rinsing application equipment over the treated area will help avoid run-off to water bodies or drainage systems. This product is highly toxic to Bees exposed to direct treatment or residues on blooming crops or weeds. Do not apply this product or allow to drift to blooming crops if Bees are visiting the treatment area.

Physical and Chemical Hazards

Do not apply water-based dilutions of F9228-2 RTU Insecticide/Miticide to electrical conduits, motor housings, junction boxes, switch boxes or other electrical equipment because of possible shock hazard.

DIRECTIONS FOR USE

For both indoor and outdoor perimeter use.

It is a violation of Federal law to use this product in a manner inconsistent with its labeling.

Read entire label before use

{Hose sprayer}

HOW TO USE:

1. Shake well before each use.
2. Remove covering from cap.
3. Remove sprayer from its slot and pull hose tip to completely extend tubing.
4. Firmly press hose tip into opening in cap until it snaps into place.
5. Hold sprayer below the level of the container and prime by pumping trigger several times until product is dispensed.
6. Adjust nozzle to desired setting.

AFTER USE:

1. To store, turn sprayer nozzle off.
2. DO NOT disconnect hose.
3. Return sprayer to its slot. Hose can be pushed back into sprayer handle.

{Trigger sprayer}

HOW TO USE:

1. Shake well before each use.
2. Turn nozzle to on position
3. Adjust nozzle to narrow fan spray, to prevent excessive wetting and waste of product. Spray just enough to cover area to be treated.

{Note to reviewer: Following table may be written in paragraph form and/or identify specific listed pest(s) on final market label}

Household Pest Control – Indoor	
Controls	Ants (including Red Imported Fire Ants, Carpenter Ants, Pharaoh and Argentine ants), Bed Bugs, Bees, Beetles* (including Carpet Beetles), Boxelder Bugs, Centipedes, Cockroaches, Crickets, Earwigs, Firebrats, Fleas, Flies, Gnats, Midges, Millipedes, Moths, (including Clothes Moths), Pillbugs, Scorpions, Silverfish, Sowbugs, Spiders (including Black Widow and Brown Recluse), Springtails, Stink Bugs, Ticks, Wasps [and][insert other listed pests] *Not for use in California
Where to Apply	Apply either as a crack and crevice, pinstream, spot, or coarse, low-pressure spray. Apply to areas where pests hide, such as baseboards, corners, storage areas, closets, around water pipes, doors and windows, attics and eaves, behind and under refrigerators, dishwashers, cabinets, sinks, furnaces, stoves, the underside of shelves, drawers and similar areas and other possible pest harborage sites. Do not use as a space or broadcast spray. Pay particular attention to cracks and crevices.
Coverage	1 gallon treats 1,000 ft ² [1.3 gallons will cover 1,300 sq ft.] [One half [½] gallon treats 500 ft ²] [One quart [32 oz] [1 Quart] will cover 250 sq ft.]
Ants (including Carpenter, Pharaoh, Argentine ants and Nuisance Ants)	Apply to areas where ants have been observed or are expected to forage. Particular attention must be given to treating entry points into the home or premises such as around doors and windows and other places where ants and ant trails may be found. For added Carpenter Ant control, spray into cracks and crevices or drill holes and spray, mist or foam into voids where Carpenter Ants or their nests are present. When using F9228-2 RTU Insecticide/Miticide in combination with baits, apply F9228-2 RTU Insecticide/Miticide as instructed above, and use baits in other areas that have not been treated with F9228-2 RTU Insecticide/Miticide.
Bed Bugs	Thorough application must be made to crack and crevices where evidence of bed bugs occurs: bed frames; box springs; mattress tufts, folds and seams; inside empty luggage; dressers and clothes closets; carpet edges; high and low wall moldings and wallpaper edges; wall hangings, mirrors, pictures; furniture; door and window frames; and bookcases. For infested mattresses, remove linens and wash before reuse. Apply to tufts, seams, folds, and edges until moist. Do not apply to entire mattress surface. Allow to dry before remaking bed. Cover mattress before use. When treating furniture, pay special attention to tufts, folds, seams, and difficult-to-access areas. On furniture, do not apply to seating areas, arms, or areas where direct skin contact can occur. Do not use this product on bed linens, pillows, or clothes. Remove all clothes and other articles from luggage, dressers, or clothes closets before application. Allow all treated areas to thoroughly dry before use. To kill pyrethroid resistant bed bugs, spray the bug directly from a distance of one foot. Apply at the rate of 1 gallon of product per 1000ft ² .
Bees and Wasps	To control Bees, Wasps, Hornets, Yellow Jackets [and][insert other listed pests] indoors, apply in the late evening when insects are at rest. Spray liberally into cracks and crevices of hiding and breeding places. Apply as a coarse spray under attic rafters contacting as many insects as possible.
Occasional Invaders	To control Boxelder Bugs, Centipedes, Earwigs, Beetles, Millipedes, Lady Beetles, Pillbugs, Sowbugs [and][insert other listed pests], apply as a crack and crevice

	treatment around doors and windows and other places where these pests may be found or where they may enter premises. Spray as a crack and crevice treatment along baseboards, storage areas and other locations.
Crawling and Flying Insect Pests	To control Cockroaches, Crickets, Firebrats, Flies, Gnats, Midges, Moths, Scorpions, Silverfish, Spiders [and][insert other listed pests], apply as a coarse, low pressure spray to areas where these pests hide: baseboards, corners, storage areas, closets, around water pipes, doors and windows, attics and eaves, behind and under dishwashers, refrigerators, cabinets, sinks, furnaces, and stoves, the underside of shelves, drawers and similar areas. Pay particular attention to cracks and crevices.
Precautions	Let surfaces dry before allowing people and pets to contact surfaces. It is recommended that a small surface compatibility test be performed before applying. Treat a small area and evaluate 30 minutes later to determine whether any change to the surface has occurred. Application is prohibited directly into sewers or drains, or to any area like a gutter where drainage to sewers, storm drains, water bodies, or aquatic habitat can occur. Do not allow the product to enter any drain during or after application.

Household Pest Control – Outdoor Pinstream, Spot, Crack and Crevice or Perimeter Treatment

Controls	Ants (including Red Imported Fire Ants, Carpenter Ants, Argentine Ants and Pharaoh), Bees, Beetles*, Biting Flies, Boxelder Bugs, Carpenter Bees, Centipedes, Chiggers, Clover Mites, Cockroaches, Crickets, Earwigs, Elm Leaf Beetles, Firebrats, Fleas, Flies, Gnats, Ground-nesting (solitary) bees and wasps, Midges, Millipedes, Moths, Pillbugs, Scorpions, Silverfish, Sowbugs, Spider Mites, Spiders (including Black Widow), Springtails, Stink Bugs, Ticks (including Brown Dog Ticks), Wasps [and][insert other listed pests]{NOTE: no other public health pests other than what is listed here may be added}. (*Not for use in California)
Where to Apply	<p>Apply as a pinstream to cracks and crevices on and around outside surfaces of home including windows, doors, utility line entrances, eaves, vents, and other areas to reduce the potential for entry by crawling pests. Treat surfaces to ensure thorough coverage but avoid runoff. To treat insects harbored in voids and cracks-and-crevices, applications must be made in such a manner to limit dripping and avoid runoff onto untreated structural surfaces and plants.</p> <p>Apply as a spot treatment on and around outside surfaces where signs of pest activity or pests are visible. Spot treatments must not exceed two square feet in size (for example, 2 ft. by 1 ft. or 4 ft. by 0.5 ft.)</p> <p>For home perimeter, remove debris and leaf litter from next to the foundation, cut back vegetation and branches that touch the foundation, and move or rake back rocks, deep mulch or other potential pest harborage next to the foundation.</p> <p>Apply a perimeter spray band up to 3 ft wide around the structure and upwards along the foundation to 2 ft. Apply as a coarse spray to thoroughly and uniformly wet the foundation and/or band area so that the insecticide will reach the soil or thatch level where pests may be active.</p>

	Do not make applications during rain. Avoid making applications when rainfall is expected before the product has sufficient time to dry (minimum 4 hours). Rainfall within 24 hours after application may cause unintended runoff of pesticide application
Coverage	1 gallon treats 1,000 ft ² [1.3 gallons will cover 1,300 sq ft.] [One half [¹ / ₂] gallon treats 500 ft ²] [One quart [32 oz] [1 Quart] will cover 250 sq ft.]
Repeat Application	Retreatment may be necessary to achieve and/or maintain control during periods of high pest pressure. Repeat application is necessary only if there are signs of renewed insect activity.

RESTRICTIONS

For Indoor Use

- Do not contact treated surfaces until dry
- Do not allow people and pets in the treated area until the spray has dried.
- Do not use as a space or broadcast spray.
- Do not apply to pets.
- Do not treat electrically active underground services or sources of electricity.
- Do not treat areas when food is exposed. Cover or remove food from area being treated. Do not allow spray to contact food, foodstuffs, food contacting surfaces, food utensils or water supplies



Do not allow to enter indoor or outdoor drains
No permita la entrada a desagües internos o externos.

For Outdoor Use

- Do not allow people and pets in the treated area until the spray has dried.
- Do not use as a space or broadcast spray.
- Do not apply to pets.
- Do not apply to plants.
- Do not treat electrically active underground services or sources of electricity.
- Do not apply by ground within 25 feet of lakes, reservoirs, rivers, permanent streams, marshes or natural ponds, estuaries, and commercial fish farm ponds.
- Do not spray the product into fish pools, ponds, streams, or lakes. Do not apply directly to sewers or storm drains, or to any area like a drain or gutter where drainage to sewers, storm drains, water bodies, or aquatic habitat can occur. Do not apply or irrigate to the point of runoff. Do not make applications during rain.
- Do not apply directly to impervious horizontal surfaces such as sidewalks, driveways, and patios.
- All outdoor spray applications must be limited to spot or crack-and-crevice treatments only, except for the following permitted uses:
 1. Applications to pervious surfaces such as soil, lawn, turf, and other vegetation
 2. Perimeter band treatments of 3 feet wide or less from the base of a man-made structure to pervious surfaces (e.g., soil, mulch, or lawn);
 3. Applications to vertical surfaces (such as the side of a man-made structure) directly above impervious surfaces (e.g., driveways, sidewalks, etc.), up to 2 feet above ground level;
 4. Applications to underside of eaves, soffits, doors, or windows permanently protected from rainfall by a covering, overhang, awning, or other structure;

- Applications to vertical surfaces (such as the side of a man-made structure) directly above impervious surfaces (e.g. driveways, sidewalks, etc.) up to 2 feet above ground. Application is prohibited directly into sewers or drains, or to any area like a gutter where drainage to sewers, storm drains, water bodies or aquatic habitat can occur. Do not allow the product to enter any drain during or after application.

{Note to Reviewer: Any one or more of the following optional marketing claims may be included on the final product label}

{General Bed Bug Claims}

- Bed Bug Treatment
- Easy to use
- Kills [bed bugs] by contact
- Kills bed bug adults [by contact]
- Kills bed bugs
- Residual kill for up to [8 weeks] 2 months]* *For susceptible (non-pyrethroid resistant) bed bugs
- One treatment works up to [8weeks] [2 months]* *For susceptible (non-pyrethroid resistant) bed bugs
- Kills for up to [8 weeks] [2 months]* *For susceptible (non-pyrethroid resistant) bed bugs
- Kills [controls] Bed Bug Eggs
- Kills Pyrethroid-Resistant Bed Bug Eggs

{Pyrethroid Resistance Kill Claims}

- Pyrethroid-Resistant Bed Bug Killer
- Kills [targets] pyrethroid-resistant bed bugs [by contact]
- Kills [targets] pyrethroid-resistant bed bugs & wild bed bug strains
- Kills [targets] [pyrethroid-] resistant bed bug strains [by contact]
- Formulated to kill pyrethroid resistant bed bugs
- Formulated to kill pyrethroid-resistant bed bug[s][strains]
- Kills [targets] the [pyrethroid-resistant] bed bugs
- Kills the toughest bed bugs* * pyrethroid-resistant bed bugs {Note to PM: The disclaimer will be used in close proximity to the initial claim.}
- Kills bed bugs resistant to pyrethroid insecticides
- [Scientifically] Formulated to kill Pyrethroid-Resistant Field [or Wild Bed Bug] Strains
- Blend of active ingredients to kill pyrethroid resistant bed bugs

{Flea Claims}

- [Also] Kills fleas
- [Also] Kills both adult and pre-adult (larvae) fleas
- Controls indoor flea infestations [for up to 3 months]
- Residual kill for up to [12 weeks] [3 months]

{Pest Specific and Control Claims}

- [Also] Kills fleas [, lice, ticks and dust mites]
- Kills Bed Bugs, Fleas, Ticks & other listed insects
- [Also] Kills fleas & ticks
- Kills over 125 [100] [listed] [common household] insects [pests] [bugs]
- Kills and controls {insert names of one or more listed insects}
- Kills and controls up to 100 [125] [XX = number not to exceed total pest list count] listed insects [pests] [bugs].
- Kills up to {insert number not to exceed count of indoor pests} listed pests in your home.

- Kills and controls roaches for up to 9 months indoors.

{General Claims}

- All Purpose Pest Control
- Dual [Two] Modes of Action [Two active ingredients] [providing contact activity and systemic action]
- Works two ways
- Dual Action [Control]
- Broad spectrum insect control
- Can be used as a barrier treatment [around your home]
- Use indoors and outdoors [to kill and control listed pests]
- Use to kill and control listed pests commonly found indoors or that may enter from outdoor areas
- Creates a barrier from invading pests[bugs] [insects] in and around your home.
- [F9228-2 RTU Insecticide/Miticide is a ready-to-use liquid that can be sprayed directly onto pests (insects) [and/or][,] on to surfaces to provide longer control][,][or as a crack and crevice [and][or] spot treatment]
- New! *{to be used only for a 6 month duration after introduction into the marketplace}*

{Formula/Staining/Odor}

- Ready to Use
- No lingering [chemical] odor
- Leaves no visible [oily] residue* (*Apply to a small area of surface to ensure no staining or residue)
- Non-staining formula will not damage fabrics or surfaces when used as directed.
- Unscented [No odor] [Odor free]
- Non-Staining [Clear] [formula] [that leaves no odor]

{Sprayer Claims}

- [New] Flip & Go™ [Sprayer] has 3 spray patterns [for multiple applications] [for precise treatments] [ideal for indoor/outdoor use] *{“New” reference to be used only for a 6 month duration after introduction into the marketplace}*
- [New] Flip & Go™ [Sprayer] precision spray wand *{“New” reference to be used only for a 6 month duration after introduction into the marketplace}*
- Accurate & continuous spray [technology]
- [Simply] Flip & Spray
- [Precise] [precision] spray [pattern]
- Sprays in hard to reach spaces
- [Just] Aim & Spray
- Comfort-Power-Precision
- Comfort Power Sprayer [Trigger] Reduces[No] Hand Fatigue
- No pumping [no squeezing], just press to spray

[If you have a medical emergency, need consultation on diagnosis, therapy and analysis please call (800) 420-9347]

[If you have questions relating to product use or application, please call (866) 945-5033]

[If you have a product spill or transportation emergency call (800) 424-9300]

STORAGE AND DISPOSAL

Pesticide Storage: Store in original container in a cool dry area away from heat or open flame and in an area inaccessible to children and pets. Keep from freezing.

Pesticide Disposal & Container Handling: Nonrefillable container. Do not reuse or refill this container.

If empty: Place in trash or offer for recycling if available. **If partly filled:** Do not pour or dispose down-the-drain or sewer. Call your local solid waste agency for local disposal options.

Conditions of Sale and Limitation of Warranty and Liability:

NOTICE: Read the entire Directions for Use and Conditions of Sale and Limitation of Warranty and Liability before buying or using this product. If the terms are not acceptable, return the product at once, unopened, and the purchase price will be refunded.

The Directions for Use of this product must be followed carefully. It is impossible to eliminate all risks inherently associated with the use of this product. Plant injury, ineffectiveness, or other unintended consequences may result because of such factors as manner of use or application, weather or conditions beyond the control of FMC or Seller. All such risks shall be assumed by Buyer and User, and, to the extent consistent with applicable law, Buyer and User agree to hold FMC and Seller harmless for any claims relating to such factors.

Seller warrants that this product conforms to the chemical description on the label and is reasonably fit for the purposes stated on the Directions for Use when used in accordance with the directions under normal conditions of use. TO THE EXTENT CONSISTENT WITH APPLICABLE LAW, FMC MAKES NO WARRANTIES OF MERCHANTABILITY OR OF FITNESS FOR A PARTICULAR PURPOSE, NOR ANY OTHER EXPRESS OR IMPLIED WARRANTIES WITH RESPECT TO THE SELECTION, PURCHASE, OR USE OF THIS PRODUCT. Any warranties, express or implied, having been made are inapplicable if this product has been used contrary to label instructions, or under abnormal conditions, or under conditions not reasonably foreseeable to (or beyond the control of) seller or FMC, and, to the extent consistent with applicable law, buyer assumes the risk of any such use.

To the extent consistent with applicable law, FMC or seller shall not be liable for any incidental, consequential or special damages resulting from the use or handling of this product. TO THE EXTENT CONSISTENT WITH APPLICABLE LAW, THE EXCLUSIVE REMEDY OF THE USER OR BUYER, AND THE EXCLUSIVE LIABILITY OF FMC AND SELLER FOR ANY AND ALL CLAIMS. LOSSES, INJURIES OR DAMAGES (INCLUDING CLAIMS BASED ON BREACH OF WARRANTY, CONTRACT, NEGLIGENCE, TORT, STRICT LIABILITY OR OTHERWISE) RESULTING FROM THE USE OR HANDLING OF THIS PRODUCT, SHALL BE THE RETURN OF THE PURCHASE PRICE OF THE PRODUCT OR, AT THE ELECTION OF FMC OR SELLER, THE REPLACEMENT OF THE PRODUCT.

This Conditions of Sale and Limitation of Warranty and Liability may not be amended by any oral or written agreement.

FMC – Trademark of FMC Corporation

© 2022 FMC Corporation All Rights Reserved

OPTIONAL MARKET LABEL CONTENT

Indoor [and Outdoor Perimeter] Pest Control**STOP. READ ENTIRE LABEL BEFORE USE.****DIRECTIONS FOR USE**

It is a violation of Federal law to use this product in a manner inconsistent with its labeling.
 For Indoor, and Outdoor Perimeter use. **Do not use on pets.**



[people and pet graphic] Do not allow people and pets in treated areas until spray has dried.

SHAKE WELL BEFORE USING

{BEGIN SPRAYER OPTIONS. OPTIONAL SPRAYER INSTRUCTIONS OPTIONS FOLLOW. Instructions may include graphic depictions of container and sprayer. Examples for some the sprayer options are provided in the appendix. Similar graphics maybe used for other sprayers}

[SPRAYER INSTRUCTIONS]

[How to prime and care for your sprayer:]

1. After shaking product well, remove cap from container and replace with sprayer hose and cap assembly. Tighten securely.
2. Turn sprayer nozzle one half turn counter-clockwise. Hold sprayer below the level of container and prime by pumping trigger 10 - 15 times until product is dispensed. Adjust nozzle to fine spray or jet stream as needed.
3. To store, turn nozzle to "OFF" position and [store with sprayer above level of liquid in container to prevent leakage] [store sprayer on hook located near bottle handle to prevent leakage].
4. Do not contaminate food, feedstuffs and domestic water supplies. Cover all food processing surfaces and utensils during treatment and thoroughly washed before use. Remove pets, birds and cover fish aquariums before spraying.

{TRIGGER SPRAYER}**HOW TO USE**

1. Shake well before each use.
2. Adjust nozzle to narrow fan spray, to prevent excessive wetting and waste of product. Spray just enough to cover area to be treated.
3. Turn nozzle to "OFF" before storing.

{NESTED SPRAYER}**HOW TO USE**

1. Shake well before each use.
2. Pull tab outward.
3. Rotate lock ring counterclockwise to unlock.
4. Pull sprayer to uncoil tubing.
5. Turn sprayer nozzle one half turn counter-clockwise. Hold sprayer below the level of container and prime by pumping trigger 10 - 15 times until product is dispensed. Adjust nozzle to fine spray or jet stream as needed.
6. To store, turn nozzle to "OFF" position and return sprayer to bottle opening.
7. Drape tubing through slot in the spray handle.
8. Turn lock ring clockwise to lock.

{AUTO TRIGGER SPRAYER}

1. Shake well before use.
2. Remove plastic tab near top of sprayer to activate batteries.
3. Twist nozzle to adjust spray from CLOSE to SPRAY or STREAM.
4. [Press the trigger to spray]. Spray just enough to cover area to be treated. Release the trigger to stop spray.
5. Twist nozzle to CLOSE before storing.

{CAPTIVE SPRAYER}

HOW TO USE

BEFORE USE:

1. Shake well before each use.
2. Peel sticker from flip-top cap and open cap. Discard sticker.
3. Remove sprayer from its slot beneath the bottle handle and remove and discard plastic wrap. Pull black hose tip to completely extend tubing.
4. Firmly press black hose tip into opening in cap until it snaps into place.
5. Hold sprayer below the level of the container and prime by pumping trigger several times until product is dispensed.
6. Adjust nozzle to desired setting.

AFTER USE:

1. To store, turn sprayer nozzle OFF.
2. DO NOT disconnect hose.
3. Return sprayer to its slot. Hose can be pushed back into sprayer handle.

{CAPTIVE SPRAYER WITH SNAP ADAPT CAP}

HOW TO USE

BEFORE USE:

1. Shake well before each use.
2. Open flip top closure
3. Remove sprayer from its slot beneath the bottle handle and unwrap the tubing. Pull hose plug to completely extend tubing.
4. Firmly press hose plug into opening in cap until it snaps into place.
5. Slide switch on hose plug counter-clockwise to "OPEN".
6. Adjust nozzle to desired setting, SPRAY or STREAM
7. Hold sprayer below the level of the container and prime by pumping trigger several times until product is dispensed.

AFTER USE:

1. To store, turn sprayer nozzle OFF.
2. Turn hose plug switch clockwise to "CLOSED"
3. DO NOT disconnect hose.
4. Return sprayer to its slot. Hose can be pushed back into sprayer handle.

{EZ SPRAY™ SPRAYER}**[OPERATING INSTRUCTIONS FOR EZ SPRAY™]**

1. Remove sprayer from side holder. [Unwrap the tubing] [Gently pull tubing out.]
2. Remove seal from top of cap. [Unplug cap.]
3. Securely snap the [green][other color] plug into hole on cap.
4. Remove plastic tab near [top] [bottom] of sprayer to activate batteries.
5. Twist nozzle to adjust spray from CLOSE to SPRAY or STREAM.
6. [When priming the sprayer, hold sprayer level to the ground. Sprayer may not prime if it is held at an angle. Once primed, it will spray in any direction.]

HOW TO USE THE EZ SPRAY™

- Aim toward target [site] [area to be treated], and away from people and pets.
- Press the trigger to spray.
- Release the trigger to stop spray.

After use: 1. Twist nozzle completely to CLOSE position. 2. Secure sprayer upright in [holster] [holder].
 3. **Failure to adjust nozzle completely to CLOSE position and properly secure sprayer in [holster] [holder] may result in leakage and damage to property or injury to people or animals.**

To replace batteries: 1. Slide battery compartment door to unlatch and open. [Push release button near nozzle and lift up on battery hatch.] 2. Remove used batteries and insert [four] [two] new AA batteries **in correct positions** as marked per diagram inside of battery compartment. **Never** insert the positive end where the negative end belongs and vice versa. **Always** use a complete set of new batteries of the same type when replacing batteries. **Never** mix alkaline, carbon-zinc or rechargeable batteries. 3. Securely close battery compartment door. 4. **Always** follow manufacturer's recommendations for use and disposal of batteries.

Additional Operating Notes: • Do not submerge in water. • Before each use, inspect sprayer carefully, making sure hose is flexible and not kinked, worn or cracked, and that all connections are tight. • When storing sprayer for prolonged periods, remove batteries.

{EASY ACTION PUMP}**[EASY ACTION PUMP [SPRAYER] Directions] [HOW TO USE THE EASY ACTION PUMP [SPRAYER]]**

1. For the initial use, remove the tie that is securing the handle to the base of the pump.
2. **REMOVE THE WAND** from the holster and **PULL THE HOSE** from the storage compartment.
3. Make sure the sprayer wand is securely tightened to the spray handle.
4. **TURN THE PUMP HANDLE CLOCKWISE** to tightly seal the pump to the bottle and unlock the pump handle for pumping.
5. **RAISE THE PUMP HANDLE FROM THE BOTTLE AND PUMP** until you begin to feel resistance
6. Secure the pump handle for carrying by pushing the handle into the base of the pump and turn the handle counterclockwise one quarter-turn to lock.
7. **BEGIN SPRAYING** by pushing down on the spray handle trigger.
8. **ROTATE THE NOZZLE AT THE TIP** of the wand to adjust the spray from a direct spray to a broadcast mist.
9. For continuous spray, push the trigger down and slide it forward to lock. **SLIDE THE TRIGGER BACK TO RELEASE** it from the lock position.

Note: If sprayer does not function properly, remove nozzle cover and check nozzle and holes in rubber component for obstructions. Replace nozzle cover and use as instructed above.

{ACCUSHOT® SPRAYER}**[OPERATING INSTRUCTIONS – AccuShot® Sprayer]**

1. Remove sprayer from side holder. [Unwrap the tubing] [Gently pull tubing out].
2. Remove seal from top of cap. Unplug cap.
3. Securely snap the [green][other color] plug into hole on cap.
4. Remove plastic tab near [top] [bottom] of sprayer to activate batteries.
5. Twist nozzle to adjust spray from CLOSE to SPRAY or STREAM.
6. [When priming the sprayer, hold sprayer level to the ground. Sprayer may not prime if it is held at an angle. Once primed, it will spray in any direction.]

[AccuShot® Sprayer – “Refill” Directions]

1. Remove cap and replace with reusable AccuShot® Sprayer. Make sure sprayer cap is tightly closed before use
2. Twist nozzle to adjust spray from CLOSE to SPRAY or STREAM.
3. [When priming the sprayer, hold sprayer level to the ground. Sprayer may not prime if it is held at an angle. Once primed, it will spray in any direction]

HOW TO USE THE AccuShot® Sprayer

- Aim toward target [site] [area to be treated], and away from people and pets.
- [To improve accuracy, use slider to extend wand.] [Use slider to extend wand and to improve accuracy.]
- Press the trigger to spray.
- Release the trigger to stop spray.

After use: 1. Twist nozzle completely to CLOSE position. 2. Secure sprayer upright [tip down] in [holster] [holder].
 3. **Failure to adjust nozzle completely to CLOSE position and properly secure sprayer in [holster] [holder] may result in leakage and damage to property or injury to people or animals.**

[Keep reusable AccuShot® sprayer for use with F9228-2 RTU Insecticide/Miticide]

To replace batteries: 1. [Slide battery compartment door to unlatch and open.] [Use screwdriver to open battery compartment [Push release button near nozzle and lift up on battery hatch.]] 2. Remove used batteries and insert [four] [two] new AA batteries **in correct positions** as marked per diagram inside of battery compartment. **Never** insert the positive end where the negative end belongs and vice versa. **Always** use a complete set of new batteries of the same type when replacing batteries. **Never** mix alkaline, carbon-zinc or rechargeable batteries. 3. Securely close battery compartment door. 4. **Always** follow manufacturer's recommendations for use and disposal of batteries.

Additional Operating Notes: • Do not submerge in water. • Before each use, inspect sprayer carefully, making sure hose is flexible and not kinked, worn or cracked, and that all connections are tight. • When storing sprayer for prolonged periods, remove batteries.

{SNAP ADAPT CAP OPTION 1}**[AccuShot® Sprayer Directions]**

1. Shake well before each use
2. Remove sprayer from side [holster] [holder]. [Unwrap the tubing] [Gently pull tubing out].
3. Open flip top closure
4. Securely snap the hose plug into opening in cap until it snaps into place.
5. Slide switch on hose plug counter-clockwise to "OPEN"
6. Remove plastic tab near [top] [bottom] of sprayer to activate batteries.
7. Twist nozzle to adjust spray from CLOSE to SPRAY or STREAM.
8. [When priming the sprayer, hold sprayer level to the ground. Squeeze and hold trigger until liquid comes out the nozzle. Sprayer may not prime if it is held at an angle. Once primed, it will spray in any direction.]

{SNAP ADAPT CAP OPTION 2}**[AccuShot® Sprayer "Refill" Directions]**

1. Remove cap and replace with reusable AccuShot® cap and Sprayer. Make sure sprayer cap is tightly closed before use
2. Twist nozzle to adjust spray from CLOSE to SPRAY or STREAM.
3. [Securely snap the hose plug into opening in cap until it snaps into place.
4. Slide switch on hose plug counter-clockwise to "OPEN"
5. [When priming the sprayer, hold sprayer level to the ground. Sprayer may not prime if it is held at an angle. Once primed, it will spray in any direction.]

{SNAP ADAPT CAP OPTION 3}**HOW TO USE AccuShot® [with Snap Adapt Cap]**

- Aim toward target [site] [area to be treated], and away from people and pets.
- [To improve accuracy, use slider to extend wand.][Use slider to extend wand and to improve accuracy.]
- Press the trigger to spray.
- Release the trigger to stop spray.

After use: 1. Twist sprayer nozzle completely to CLOSE position. 2. Turn hose plug switch clockwise to "CLOSED". 3. Secure sprayer upright [tip down] in [holster] [holder]. 4. **Failure to adjust nozzle completely to**

CLOSE position and properly secure sprayer in [holster] [holder] may result in leakage and damage to property or injury to people or animals.

[Keep reusable AccuShot® sprayer for use with F9228-2 RTU Insecticide/Miticide]

To replace batteries: 1. Slide battery compartment door to unlatch and open. [Use screwdriver to open battery compartment [Push release button near nozzle and lift up on battery hatch.] 2. Remove used batteries and insert [four] [two] new AA batteries **in correct positions** as marked per diagram inside of battery compartment. **Never** insert the positive end where the negative end belongs and vice versa. **Always** use a complete set of new batteries of the same type when replacing batteries. **Never** mix alkaline, carbon-zinc or rechargeable batteries. 3. Securely close battery compartment door. 4. **Always** follow manufacturer's recommendations for use and disposal of batteries.

Additional Operating Notes: • Do not submerge in water. • Before each use, inspect sprayer carefully, making sure hose is flexible and not kinked, worn or cracked, and that all connections are tight. • When storing sprayer for prolonged periods, remove batteries.

[DIRECTIONS FOR Flip & Go™ SPRAYER PRODUCT {Option 1}]

For Initial Use Only: Remove Battery Isolation Strip from [beneath] sprayer and discard.

HOW TO USE

BEFORE USE:

1. Shake well before each use.
2. Flip [Rotate] [Raise] the [nozzle extension] [wand] up to the ["Ready to Use"] [spray] position.
3. Rotate nozzle from ["Off"] ["X"] position to [desired [spray]] position.
4. Slide the lock [switch] [button] towards trigger[button] [down] to the unlocked [open] [spray] position.
5. [Grab bottle and let arm hang naturally.] Press button down to spray.

AFTER USE:

6. [When] [Once] spraying is completed, slide the [[lock] [switch] [button]] [away from [trigger] [button]] [up] to the [locked] [closed] position.
7. Rotate nozzle to ["Off"] ["X"] position and [flip] [rotate] the [nozzle extension] [wand] down to storage position.

To replace batteries: While the lock is in the [locked] [closed] position, rotate sprayer counterclockwise and [lift] [pull up] on the sprayer. [Push] [Press] battery door tab and pull to [open] [remove] battery door. Insert and align new batteries to correct "+" and "-" designations as shown near the battery door. [Close] [Replace] battery door. Replace the sprayer on the bottle in the same position it was removed from, matching the arrows on the front of the sprayer and bottle. Rotate sprayer clockwise until the sprayer lines up with the front of the bottle. [Keep reusable [Flip & Go™] sprayer for use with F9228-2 RTU Insecticide/Miticide]

[DIRECTIONS FOR Flip & Go™ SPRAYER PRODUCT {Option 2}]

For Initial Use Only: Remove Battery Isolation Strip [from] [beneath] sprayer and discard.

HOW TO USE

BEFORE USE:

1. Shake well before each use.
2. [Flip] [Rotate] [Raise] the [nozzle extension] [wand] up to the ["Ready to Use"] [spray] position.
3. Rotate nozzle from ["Off"] ["X"] position to [desired [spray]] position.
4. Slide the [[lock] [switch] [button]] [away from [trigger] [button]] [up] to the [unlocked] [open] [spray] position.
5. [Grab bottle and let arm hang naturally.] Press button down to spray.

AFTER USE:

6. [When] [Once] spraying is completed, slide the [[lock] [switch] [button]] [towards [trigger] [button]] [down] to the [locked] [closed] position.
7. Rotate nozzle to ["Off"] ["X"] position and [flip] [rotate] the [nozzle extension] [wand] down to storage position.

To replace batteries: While the lock is in the [locked] [closed] position, rotate sprayer counterclockwise and [lift] [pull up] on the sprayer. [Push] [Press] battery door tab and pull to [open] [remove] battery door. Insert and align new batteries to correct "+" and "-" designations as shown near the battery door. [Close] [Replace] battery door.

Replace the sprayer on the bottle in the same position it was removed from, matching the arrows on the front of the sprayer and bottle. Rotate sprayer clockwise until the sprayer lines up with the front of the bottle. [Keep reusable [Flip & Go™] Sprayer for use with F9228-2 RTU Insecticide/Miticide]

{END SPRAYER OPTIONS}

INDOOR APPLICATIONS

Carpet Beetles: Thoroughly spray along baseboards and edges of carpeting, under carpeting, rugs and furniture, in closets and on shelving, and wherever else insects are seen or suspected.

Fleas: Thoroughly spray areas around pet beds and resting quarters including nearby cracks and crevices, along and behind baseboards, window and door frames and localized areas of floor and floor covering where fleas may be present. Pet bedding should be replaced with clean fresh bedding after treating the area. **Do not treat pets with this product.** To control the source of flea infestations, pets should be treated with a product registered for application to animals.

Note: Test inconspicuous sample of fabric or rug for staining before use. Check carpet manufacturer's warranty and care and maintenance information before using product on your specific brand of carpeting.

Bed Bugs and bed bug eggs: Apply as a spot treatment to cracks and crevices around baseboards, floorboards, bed boards and walls [night stand and empty dresser drawers] [picture frames and wall hangings] [crown molding] [door and window casings]. Allow treated surfaces to dry thoroughly before use. Inspect area and repeat after 7 days [if necessary] while bed bugs are present. For persistent infestations, consult a professional applicator.

To treat beds for bed bugs and bed bug eggs: Disassemble the bed frame and remove bedding. Do not apply product to bedding. Apply this product to the bed frame, mattress and box spring. Application to mattresses and box springs is intended for treatment of seams, edges and tufts [creases][folds][indentations][buttons][vent holes] only. Do not saturate the mattress or box spring. Do not treat the entire surface of the mattress or box spring. Allow the spray to dry before using the mattress and/or box spring. Also thoroughly apply the product to cracks and crevices in the sleeping area such as baseboards, behind pictures/ wall hangings, along and underneath carpet edges and other articles/ furniture in the bedroom or sleeping area. Do not apply to stuffed animals or toys.

To treat luggage for bed bugs and bed bug eggs: Remove contents and spot treat areas that may harbor bed bugs, concentrating on corners, pockets inside the luggage and seams. Allow luggage to dry before reuse. Do not use as a space spray.

To kill pyrethroid resistant bed bugs and bed bug eggs, spray the bug and eggs directly from a distance of one foot. Apply at the rate of 1 gallon of product per 1000 ft².

{OPTIONAL PRODUCT FACTS BOX}

<i>Where to Use: Spot treat mattress tufts, folds, vent holes and seams.</i>
<i>Application: Spray intended use areas until damp. DO NOT SATURATE.</i>
<i>How Often to Use: Inspect area and apply no more than once a week while bed bugs are present.</i>

OUTDOOR APPLICATIONS

Ants, Bees, Wasps, Hornets, Yellowjackets, Box Elder Bugs, Centipedes, Millipedes, Pillbugs, Sowbugs, Scorpions, Spiders, Flies, Asian Beetles and Stink Bugs: Spray outside surfaces of screens, doors, window frames or wherever insects may enter the room. Also spray surfaces around light fixtures, on porches, in garages and other places where insects land or congregate.

[FOUNDATION] [PERIMETER] [BARRIER] TREATMENT

Apply a continuous band of insecticide around building foundation and around windows, doors, utility line entrances, eaves, vents, and other areas to reduce the potential for entry by crawling pests. Remove debris and

leaf litter from next to the foundation, cut back vegetation and branches that touch the foundation, and move or rake back rocks, deep mulch or other potential pest harborage next to the foundation.

Apply the band up to 3 ft wide around the structure and upwards along the foundation to 2 ft and around windows, doors and roof overhangs. Apply as a coarse spray to thoroughly and uniformly wet the foundation and/or band area so that the insecticide will reach the soil or thatch level where pests may be active. [1 gal will cover 1,000 sq ft.] [1.3 gal will cover 1,300 sq ft.] [0.5 gal will cover 500 sq ft.] [1 qt will cover 250 sq ft.]

RESTRICTIONS

- Do not allow people and pets in the treated area until the spray has dried.
- Do not use as a space or broadcast spray.
- Do not apply to pets.
- Do not treat areas when food is exposed. Cover or remove food from area being treated. Do not allow spray to contact food, foodstuffs, food contacting surfaces, food utensils or water supplies.
- Do not treat electrically active underground services or sources of electricity.
- Do not water the treated area to the point of runoff.
- Do not make applications during rain.
- All outdoor applications must be limited to spot or crack-and-crevice treatments only, except for outdoor applications to building foundations, up to a maximum height of 2 ft. Other than applications to building foundations, all outdoor applications to impervious surfaces such as sidewalks, driveways, patios, porches and structural surfaces (such as windows, doors and eaves) are limited to spot and crack-and-crevice applications only.
- Application is prohibited directly into sewers or drains, or to any area like a gutter where drainage to sewers, storm drains, water bodies or aquatic habitat can occur. Do not allow the product to enter any drain during or after application.

{Note to Reviewer: The following text is optional language educating the consumer on the steps necessary to approach a bed bug problem.}

[Hot Shot® Bed Bug Home Protection Plan] [Hot Shot® Bed Bug Home Protection Cycle] [Hot Shot® Bed Bug 3-Step Process]

[GRAPHICAL ICON identifying the steps: Detection, Treatment, Prevention]



FOR BEST RESULTS

USE THIS PRODUCT AS PART OF A COMPREHENSIVE BED BUG TREATMENT PLAN

Treating bed bugs as part of a cycle is key to gaining control. Because infestations may be at a different part of the cycle when treatment begins, the following information will help you determine the best place to begin.

TREATMENT

If you have detected bed bugs by using the products below, being bitten or observing bed bugs, bed bug eggs or excrement in mattress tufts and bedding, you want to choose from one or more of the following product types depending on your needs:

- Use an aerosol product registered to treat bed bugs and bed bug eggs in cracks and crevices.
- Use a ready-to-use liquid product registered to treat bed bugs and bed bug eggs for spot treatment and cracks and crevices.
- Use a total release fogger registered to treat bed bugs and bed bug eggs for areas such as carpet, mattress and box spring surfaces, and furniture surfaces.
- Use a mattress treatment kit registered to treat bed bugs and bed bug eggs for mattresses and other household items.

PREVENTION

To help prevent the spread of bed bugs from already infested mattresses and box springs into uninfested areas, you want to use an appropriate mattress and box spring encasement.

DETECTION

If you have not seen any bed bugs or are in prevention mode and want to ensure you are still bed bug free, you want to detect using a combination of the following products:

- **Hot Shot™ Bed Bug Interceptor™**
- **Hot Shot™ Bed Bug Glue Trap**

{STORAGE AND DISPOSAL OPTIONS}

STORAGE AND DISPOSAL

Pesticide Storage: Store in original container in a cool dry area away from heat or open flame and in an area inaccessible to children and pets. Keep from freezing.

Pesticide Disposal & Container Handling: Nonrefillable container. Containers are not to be reused or refilled. **If empty:** Place in trash or offer for recycling if available. **If partly filled:** Do not pour or dispose down-the-drain or sewer. Call your local solid waste agency for local disposal options.

STORAGE AND DISPOSAL {Auto Trigger Sprayer}

Pesticide Storage: Store in original container in a cool, dry area away from heat or open flame and in an area inaccessible to children and pets. Keep from freezing.

Pesticide Disposal & Container Handling: [Reusable Auto Trigger [Sprayer]: Do not discard. Keep the Auto Trigger [Sprayer] for use on F9228-2 RTU Insecticide/Miticide.] Non-refillable container. Containers are not to be reused or refilled. **If Empty:** Place in trash or offer for recycling if available. **If partly filled:** Do not pour or dispose down-the-drain or sewer. Call your local solid waste agency for local disposal options.

STORAGE AND DISPOSAL {EZ SPRAY™}

Pesticide Storage: Turn the nozzle to "CLOSE" position. To prevent leakage, attach sprayer to clip. Store this product only in its original container in a secure storage area away from sources of heat or open flame and in an area inaccessible to children and pets. Keep from freezing.

Pesticide Disposal & Container Handling: Nonrefillable container. Do not reuse or refill this container [unless the directions for use allow a different (concentrated) product to be diluted in the container].

If empty: Place in trash or offer for recycling if available. **If partly filled:** Do not pour or dispose down-the-drain or sewer. Call your local solid waste agency for local disposal options.

STORAGE AND DISPOSAL {EASY ACTION PUMP SPRAYER}

Pesticide Storage: Slowly turn the pump handle counterclockwise to loosen the pump mechanism from the bottle to release pressure. Turn the handle back clockwise to seal the unit for storage. Turn the handle counterclockwise one quarter-turn to lock the handle. Push the hose back into the storage compartment. Place the wand back in the holster. Store this product in its original container in a secure storage area.

Pesticide Disposal & Container Handling: If empty: Nonrefillable container. Do not reuse or refill this container [unless the directions for use allow a different (concentrated) product to be diluted in the container]. Place in trash or offer for recycling if available. **If partly filled:** Do not pour or dispose down-the-drain or sewer. Call your local solid waste agency for local disposal options.

STORAGE AND DISPOSAL {AccuShot® Sprayer}

Pesticide Storage: Turn the nozzle to “CLOSE” position. To prevent leakage, attach sprayer to clip. Store this product only in its original container in a secure storage area away from sources of heat or open flame and in an area inaccessible to children and pets. Protect product from freezing.

Pesticide Disposal & Container Handling: [Do not discard the AccuShot® Sprayer. Keep the AccuShot® Sprayer for use on F9228-2 RTU Insecticide/Miticide.] Nonrefillable container. Do not reuse or refill this container [unless the directions for use allow a different (concentrated) product to be diluted in the container]. **If empty:** Place in trash or offer for recycling if available. **If partly filled:** Do not pour or dispose down-the-drain or sewer. Call your local solid waste agency for local disposal options.

STORAGE AND DISPOSAL {AccuShot® Sprayer – with Snap Adapt Cap}

Pesticide Storage: Turn the nozzle to “CLOSE” position. To prevent leakage, place sprayer in holster. Store this product only in its original container in a secure storage area away from sources of heat or open flame and in an area inaccessible to children and pets. Keep from freezing.

Pesticide Disposal & Container Handling: [Do not discard the AccuShot® Sprayer. Keep the AccuShot® Sprayer for use on F9228-2 RTU Insecticide/ Miticide.] Nonrefillable container. Do not reuse or refill this container [unless the directions for use allow a different (concentrated) product to be diluted in the container]. **If empty:** Place in trash or offer for recycling if available. **If partly filled:** Do not pour or dispose down-the-drain or sewer. Call your local solid waste agency for local disposal options.

STORAGE AND DISPOSAL {Flip & Go™ Sprayer}

Pesticide Storage: Turn the nozzle to “CLOSE” position. To prevent leakage, and [flip] [rotate] the [nozzle extension] [wand] down to storage position. Store this product only in its original container in a secure storage area away from sources of heat or open flame and in an area inaccessible to children and pets. Keep from freezing.

Pesticide Disposal & Container Handling: [Do not discard the Flip & Go™ Sprayer. Keep the Flip & Go™ Sprayer for use on Chemsico Home Insect Control 25G.] Nonrefillable container. Do not reuse or refill this container [unless the directions for use allow a different (concentrated) product to be diluted in the container]. **If empty:** Place in trash or offer for recycling if available. **If partly filled:** Do not pour or dispose down-the-drain or sewer. Call your local solid waste agency for local disposal options.

PEST LIST

Ants	Argentine Ant, Carpenter Ant (Texas and Black), Red Harvester Ant, Fire Ant, Pharaoh (sugar) Ant, Pyramid (Crazy) Ant, Pavement Ant, Odorous House Ant, and other nuisance ants (including Army Ant, Big-headed Ant, Acrobat, Little Black Ant, Spine-waisted ants, and Leafcutter ants)
Bees and Wasps	Bees including Carpenter bees, Round-nesting (solitary) Bees, Bumble Bees, Sweat Bees, Mining Bees, Digger Bees, Leafcutting Bees; Wasps including Thread-Waisted (Mud Dauber), Digger and Paper Wasps; Hornets, and Yellow Jackets
Beetles	Asian Lady Beetle (including Asian Lady Beetle Eggs), Carpet Beetle, Flea Beetle, Flour Beetles (red and confused), cigarette beetles, Japanese Beetles, Lesser Grain Borers, Grain beetles (rusty, merchant, and sawtoothed), Warehouse Beetles, Dermestid Beetles, Rice Weevils, and Spider Beetles
Caterpillars and Moths	Moths including Clothes Moth, Chocolate Moths, Tobacco moths, Indian Meal Moths, and Rice Moths
Centipede	House centipede
Cockroaches	German Cockroach (Croton Bug), Brown Banded Cockroach, Smoky Brown Cockroach, Oriental Cockroach, Asian Cockroach, and American Cockroach (Waterbug)
Common Bristletails	Silverfish, Springtails, and Firebrat
Earwigs	Earwigs (European, Riparian and Ring-legged)
Flies and gnats	Flies including Cluster Fly, House fly, Vinegar (Fruit) Fly, Phorid flies, Sphaerocerid flies, Flesh flies, bottle flies (blue and green), and biting flies; Gnats including Fungus Gnat; Midges
Grasshoppers & Crickets	Grasshoppers. True Crickets (Mole and House). Camel Crickets (Cave, Spider, and Camel)
Lice	Bark Lice and Book Lice
Millipedes	Millipedes including Almond, Florida, North American, and Soft Millipedes
Mites	Mites including Carmine, Chigger, Spruce, Clover, Two Spotted Spider (Adult and eggs), Tropical, Russet, and Red Spider
Pillbugs and Sowbugs	Common Pillbug and common Sowbug
Spiders	Comb Footed Spiders including Black Widow Spider and American House Spider; Wolf Spiders; Funnel Web/Hobo Spiders including Hobo spider and Grass Spider; Brown Recluse Spider; and other spiders including Daddy Long Legs, Orb Weavers, Sac Spiders, Spitting Spiders, Crab Spiders, Trap Door Spiders, Jumping Spiders, Lynx Spiders, Wandering Spiders, Violin Spiders, Tarantulas, and Nursery Web Spiders
Scorpions	Sculptured Scorpions
True Bugs	Leaf footed bugs including Squash Bugs. Stink Bugs including Brown Marmorated and Kudzu. Eastern and Western Boxelder Bugs. Chinch Bugs
Ticks	Ticks including Brown Dog Tick and Deer Tick
Fleas	Cat flea and dog flea
Bed Bug	Common Bed Bug

Conditions of Sale of Warranty and Liability:**{OPTION 1}**

NOTICE: To the extent consistent with applicable law, buyer assumes all responsibility for safety and use not in accordance with directions.

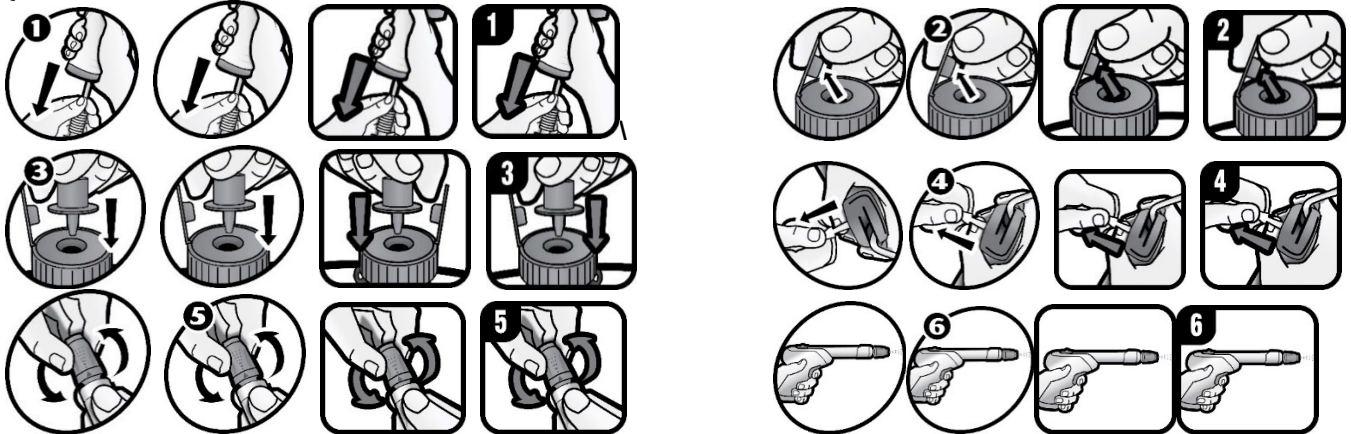
[*Questions or comments?* Call toll free 1-800-917-5431.]

[Money Back Guarantee**] [Guaranteed to Work or Your Money Back**]

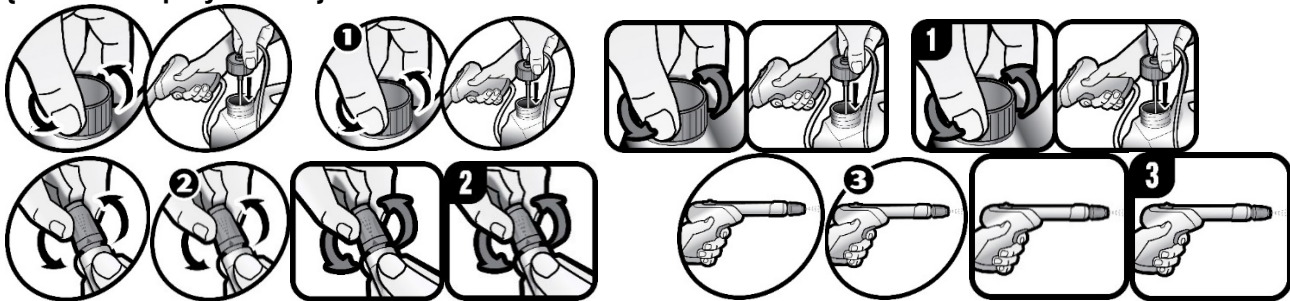
[**If you are not satisfied with this product for any reason, send your written request for a refund to the address below, together with the original dated store receipt showing the price you paid. Please allow 6-8 weeks for processing.]APPENDIX

Optional Graphic Depictions:

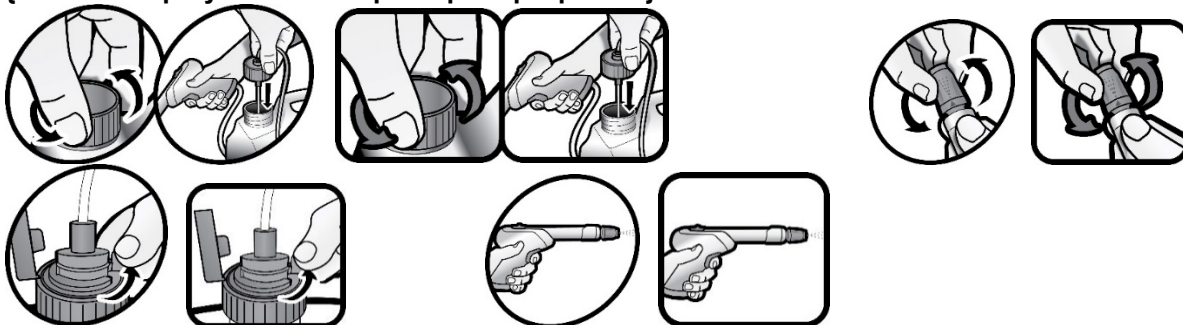
{Note to reviewer: Graphic may vary in color or design. The follow are representations of the label graphics to be used in conjunction with {Accushot Sprayer}



{Accushot Sprayer Refill}

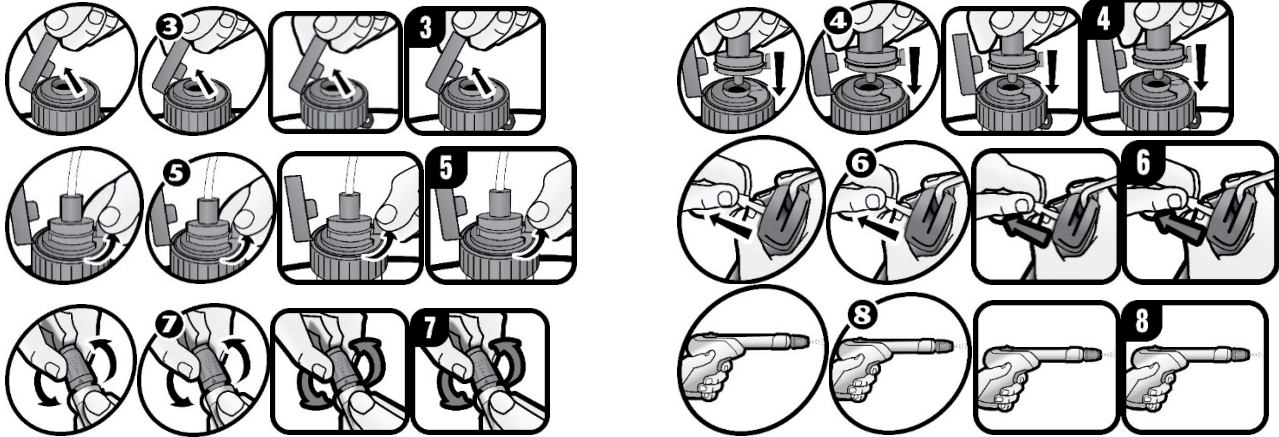


{Accushot Sprayer Refill Snap Adapt Cap Option 2}



{Accushot Sprayer Snap Adapt Cap Option 1}

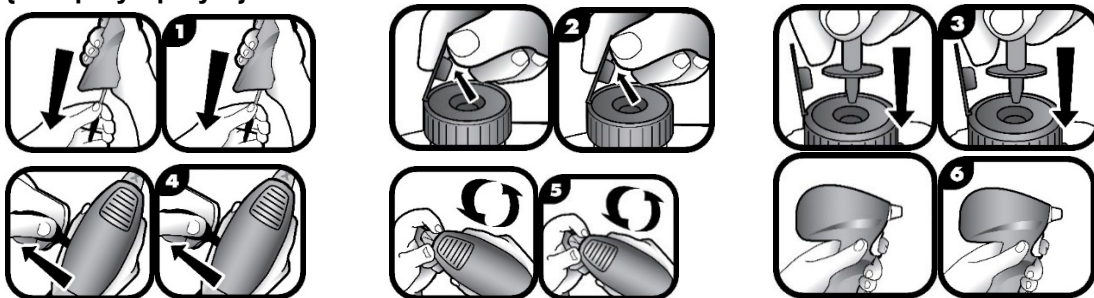




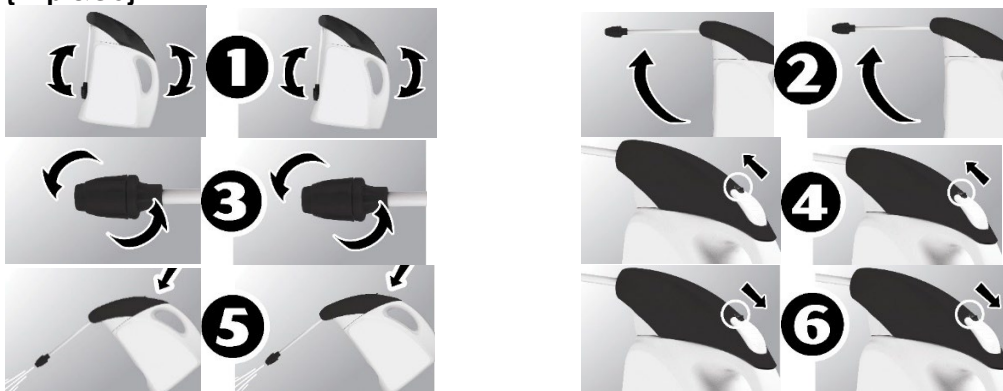
{Captive Sprayer with Snap Adapt Cap}



{EZ Spray Sprayer}



{Flip &Go}



{Other}

