



UNITED STATES ENVIRONMENTAL PROTECTION AGENCY
WASHINGTON, DC 20460

OFFICE OF CHEMICAL SAFETY
AND POLLUTION PREVENTION

September 16, 2020

Laura Anderson
Product Registration Manager
FMC Corporation
2929 Walnut Street
Philadelphia, PA 19104

Subject: Label Amendment – Minor changes throughout the label
Product Name: F7214 RTU Herbicide
EPA Registration Number: 279-9646
Application Date: November 12, 2019
Decision Number: 558785

Dear Laura Anderson:

The amended label referred to above, submitted in connection with registration under the Federal Insecticide, Fungicide and Rodenticide Act, as amended, is acceptable. This approval does not affect any conditions that were previously imposed on this registration. You continue to be subject to existing conditions on your registration and any deadlines connected with them.

A stamped copy of your labeling is enclosed for your records. This labeling supersedes all previously accepted labeling. You must submit one copy of the final printed labeling before you release the product for shipment with the new labeling. In accordance with 40 CFR 152.130(c), you may distribute or sell this product under the previously approved labeling for 18 months from the date of this letter. After 18 months, you may only distribute or sell this product if it bears this new revised labeling or subsequently approved labeling. "To distribute or sell" is defined under FIFRA section 2(gg) and its implementing regulation at 40 CFR 152.3.


Should you wish to add/retain a reference to the company's website on your label, then please be aware that the website becomes labeling under the Federal Insecticide Fungicide and Rodenticide Act and is subject to review by the Agency. If the website is false or misleading, the product would be misbranded and unlawful to sell or distribute under FIFRA section 12(a)(1)(E). 40 CFR 156.10(a)(5) list examples of statements EPA may consider false or misleading. In addition, regardless of whether a website is referenced on your product's label, claims made on the website may not substantially differ from those claims approved through the registration process. Therefore, should the Agency find or if it is brought to our attention that a website contains false or misleading statements or claims substantially differing from the EPA approved registration, the website will be referred to the EPA's Office of Enforcement and Compliance.

Your release for shipment of the product constitutes acceptance of these conditions. If these conditions are not complied with, the registration will be subject to cancellation in accordance

Page 2 of 2
EPA Reg. No. 279-9646
Decision No. 558785

with FIFRA section 6. If you have any questions, please contact Lydia Crawford by phone at 703-347-0622, or via email at Crawford.Lydia@epa.gov.

Sincerely,



Emily Schmid, Product Manager 25
Herbicide Branch
Registration Division (7505P)
Office of Pesticide Programs

Enclosure

F7214 RTU Herbicide

EPA Reg. No. 279-9646

EPA Est. 279-

Selective Postemergence Control of Annual Grasses, Broadleaf Weeds, and Sedges in Residential Lawns

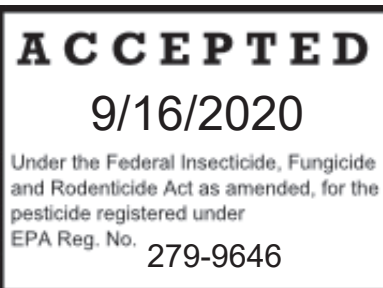
Active Ingredients:

Sulfentrazone0.021%

Quinclorac0.058%

Other Ingredients 99.921%

100.000%



KEEP OUT OF REACH OF CHILDREN
CAUTION

See other panels for additional Precautionary Information, First Aid and Complete Directions for Use

NET CONTENTS XX FL OZ / XXX mL

FMC
FMC Corporation
2929 Walnut Street
Philadelphia PA 19104

Note to Reviewer: Text in [brackets] is optional

FIRST AID	
If swallowed	<ul style="list-style-type: none"> • Call poison control center or doctor immediately for treatment advice. • Have a person sip a glass of water if able to swallow. • Do not induce vomiting unless told to do so by the poison control center or doctor. • Do not give anything by mouth to an unconscious person.
If on skin or clothing	<ul style="list-style-type: none"> • Take off contaminated clothing. • Rinse skin immediately with plenty of water for 15-20 minutes. • Call a poison control center or doctor for treatment advice.
If in eyes	<ul style="list-style-type: none"> • Hold eye open and rinse slowly and gently with water for 15-20 minutes. • Remove contact lenses, if present, after the first 5 minutes, then continue rinsing eye. • Call a poison control center or doctor for treatment advice.
HOTLINE NUMBER	
Have the product container or label with you when calling a poison control center or doctor, or going for treatment. You may also contact 1-(800)-331-3148 for emergency medical treatment information.	

PRECAUTIONARY STATEMENTS

HAZARDS TO HUMANS AND DOMESTIC ANIMALS

CAUTION

Harmful if inhaled, swallowed, or absorbed through skin. Causes moderate eye irritation. Avoid contact with skin, eyes, and clothing. Wash thoroughly with soap and water after handling and before eating, drinking, chewing gum, using tobacco or using the toilet. Remove contaminated clothing and wash before reuse.

Keep children and pets out of the treated area until sprays have dried.

ENVIRONMENTAL HAZARDS

This product is toxic to marine/estuarine invertebrates. To protect the environment, do not allow pesticide to enter or run off into storm drains, drainage ditches, gutters, or surface waters. Applying this product in calm weather when rain is not predicted for the next 24 hours will help ensure that wind or rain does not blow or wash pesticide off the treatment area. Rinsing application equipment over the treated area will help avoid runoff to water bodies or drainage systems.

This product may impact surface water quality due to runoff of rain water or spray drift. Under certain conditions this product may have a high potential for runoff into surface water for several months after application. This is especially true for poorly draining soils and soils with shallow ground water.

The active ingredients in this product are known to leach through soil into groundwater under certain conditions as a result of labeled use. Use of this product in areas where soils are permeable, particularly where the water table is shallow, may result in groundwater contamination.

DIRECTIONS FOR USE

It is a violation of Federal Law to use this product in a manner inconsistent with its labeling. Observe all cautions and limitations on this label. The use of F7214 RTU HERBICIDE not consistent with this label may result in plant injury. Keep container closed to avoid spills and contamination.

USE INFORMATION

F7214 RTU HERBICIDE selectively controls or suppresses tough weeds like crabgrass, dandelion, clover, ground ivy, purple* and yellow nutsedge (nutgrass), kyllinga, chickweed, wild onion and garlic, broadleaf plantain, purslane, wild violet, spurge, and other listed annual, biennial, and broadleaf weeds in a great variety of lawns, including:

*Not for use in California

Cool Season Grasses
Tall & Fine Fescue
Kentucky Bluegrass
Rough Bluegrass
Ryegrass (perennial)

Warm Season Grasses
Common & Hybrid Bermudagrass*
Zoysiagrass*
Centipedegrass
Buffalograss
Seashore Paspalum

*Certain hybrid bermudagrass and zoysiagrass cultivars are more susceptible to temporary turf discoloration. It is recommended to treat a small area prior to treatment of larger areas.

This unique formula causes visual symptoms to develop quickly within 3 to 7 days after application. F7214 RTU HERBICIDE involves uptake by both weed roots and shoots. Complete kill should occur in 2-3 weeks. F7214 RTU HERBICIDE also controls yellow nutsedge tubers (nutlets) in the soil over time.

A postemergence application of F7214 RTU HERBICIDE is improved when adequate soil moisture is present at application. Best weed control results will be obtained when no rainfall or irrigation occurs within 24 hours after application. If no rainfall or irrigation occurs within 7 days after application of F7214 RTU HERBICIDE in the amount of 0.5 inches, then irrigation of at least 0.5 inches is recommended.

[Open]
 [Resealable label for directions & precautions]

APPLICATION INSTRUCTIONS AND PRECAUTIONS

Where to Use [graphic icon] 	Lawns: Well established turfgrasses. Cool Season Grasses: Fine & Tall Fescue, Perennial Ryegrass, Kentucky & Rough Bluegrass Warm Season Grasses: Common & Hybrid Bermudagrass, Buffalograss, Centipedegrass, Seashore Paspalum, Zoysiagrass. <i>Do not use on St. Augustinegrass.</i>
Kills [graphic icon] 	Sedges, Grasses and Broadleaf Weeds: Yellow Nutsedge, Kyllinga, Crabgrass, Foxtail, Ground Ivy, Wild Violet, Plantain, Dandelion, Clover, Dollarweed, Spurge, Woodsorrel, Knotweed, Chickweed, Curly Dock, Wild Onion, Wild Garlic, and other listed weeds.
When to Use	As weeds are small and actively growing. For best performance, apply when temperatures are [between] 55°F - 85°F.
How Much to Use	Spot spray weed directly until well covered [run-off]. Some weeds may require repeat application. (See detailed instructions.)

Twist open nozzle. Spot spray weed directly onto weed until well covered. Some weeds may require repeat application (see detailed instructions below).

APPLICATION PRECAUTIONS

For best results, apply to weeds when less than 3 inches high.

Try to avoid overlap spraying.

Use only on well-established non-stressed turfgrass. Applications to stressed plants (turfgrass or target weeds) may result in temporary discoloration or poor weed control. Allow turfgrass to develop good root system before applying.

If discoloration occurs, treated turfgrass will recover with new growth and discolored leaf tissue will be removed with mowing. To reduce potential for discoloration, do not apply on turfgrass that is weakened by weather, mechanical, chemical, disease or other related stress. Maintain proper cultural practices such as adequate moisture and fertility levels to promote healthy turfgrass growth.

Wait at least 4 weeks after treatment before reseeding, winter overseeding, or plugging lawns.

Avoid applying when windy to prevent product drifting to other plants.

RESTRICTIONS

Keep children and pets out of the treated area until sprays have dried.

Do not spray over the top of flowers, ornamentals (including herbaceous) or garden vegetables.

Do not use on turfgrasses other than those listed on the label.

Do not use in greenhouses.


Do not graze or feed treated grass clippings.


Do not apply to newly planted, plugged, or sodded turfgrass.


SPRAYER AND REFILL INSTRUCTIONS OPTIONS**HOW TO USE****TRIGGER SPRAYERS**


1. Shake well.
2. Spray the weeds only. Spray to lightly cover broadleaf and grass weeds. Excessive spraying can injure some lawns. Do not apply when daytime temperatures are above 90°F as lawn injury can occur (do not apply above 85°F for bermudagrass).


Sprayer Directions
Instrucciones del rociador

1 
 Remove sprayer from bottle and remove shrink wrap.
Saque el rociador de la botella y quite la cobertura plástica.

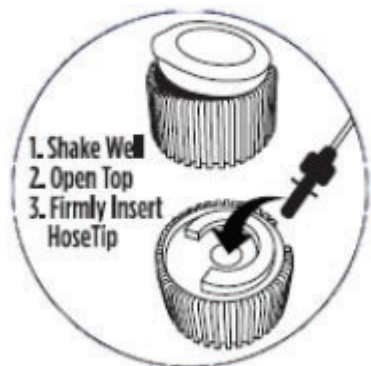
2 
 Remove plug from sprayer and pull cord out all the way.
Retire el tapón del rociador y saque completamente la manguera.

3 
 Remove tab from flip top cap.
Quite la lengüeta de la tapa.

4 
 Open and insert plug into cap opening.
Abrala e inserte el tapón en la abertura de la tapa.

5 
 Turn sprayer nozzle to selected pattern and follow directions for use.
Gire la boquilla del rociador hasta el patrón seleccionado y siga las instrucciones.

Optional Image for sticker applied to cap on packaging with included spray wand:



To replace batteries: Follow diagram inside battery compartment. [optional image]

OPTIONAL SPRAYER DIRECTIONS

[Applicator Option 1]

Prepare Comfort Grip Battery Powered Sprayer.

1. Remove Sprayer from Holster and remove battery tab.
2. Remove red plug and pull cord out all the way.
3. Remove tab from flip top of cap.
4. Open and insert red plug into spout [cap opening].
5. Turn sprayer nozzle to "on" [desired spray pattern] and follow directions for use [below].

[To replace batteries:

Push release button on sprayer and open battery compartment door.

Promptly remove used batteries and replace with two new AA batteries

Insert new batteries following the "+" and "-" markings according to the polarity directions shown inside.

Do not recharge, heat or dispose of batteries in fire.

Keep batteries out of reach of children.

Always follow manufacturer's recommendations for use and disposal of batteries. Remove batteries from sprayer before storing or when not using for extended periods of time.]

[Applicator Option 2]

[(PNS [II])/Pull 'N Sprayer [II]/SprayMaster]

[[Applicator Name] [Applicator/Sprayer] Directions]

[Illustration #1: graphic representation of sprayer instructions for proper sprayer & hose assembly]

- Remove sprayer from side carrier and unwrap hose completely.
- Insert (color of plug) plug at end of hose into (color of spout) spout on cap [until it clicks].
- Flip up spout

[Illustration #2: graphic representation of directional spray application]

- Point sprayer away from body.
- Grasp sprayer by the handle.
- Slowly pull ring at bottom of sprayer handle until it stops to ready the sprayer.

[Illustration #3: graphic representation of nozzle adjustment]

- Twist nozzle at end of sprayer to adjust spray pattern.

[Illustration #4: graphic representation of proper sprayer use & instructions below]

- Press and hold button on sprayer to begin spraying.
- Pull ring at sprayer bottom again as needed to continue spraying.

HOW TO USE:

Follow illustrations and instructions above. Twist nozzle at end of sprayer to adjust spray pattern. Point sprayer away from body and press sprayer button to begin spraying. Pull ring at sprayer bottom again as needed to continue spraying. Aim at center of weed and spray to lightly cover.

[HOW TO APPLY:]

- Twist nozzle at end of sprayer to open [wide spray, medium spray, or stream].
- Point sprayer away from body and press spray button to begin spraying.
- Pull ring at sprayer bottom again as needed to continue spraying.
- Aim at center of weed and spray to lightly cover.]

**[Applicator Option 3]
[(QCS) and Trigger Sprayer]**

[[Applicator Name] [Applicator/Sprayer] Directions]

Quick Connect Sprayer Package Design Directions:

NOW with Quick Connect Sprayer. 1. Pull sprayer from bottle. 2. Pull [color] hose connector and coil from sprayer handle. 3. Insert hose connector into [color] sprout on cap until it clicks into place. 4. Flip up spout. Turn sprayer nozzle to open, and spray.

Quick Connect Sprayer. 1. Remove sprayer. Pull cord ALL THE WAY OUT. 2. Insert red plug into spout (on cap) [until it clicks]. 3. Flip up spout. Open nozzle at end of sprayer.

Trigger Sprayer Directions:**HOW TO USE:**

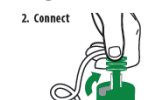
Turn sprayer nozzle to open. Adjust spray nozzle to give a coarse spray. Aim at center of weed and spray to lightly cover. Spray any time weeds are actively growing.

[HOW TO APPLY: [icon: graphic representation of nozzle adjustment & spray pattern]

- Turn sprayer nozzle to open.
- Adjust sprayer nozzle as desired.
- Aim at center of weed and spray to lightly cover.]

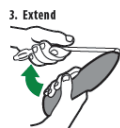
**[Applicator Option 4]
[Battery Powered Wand]****1. Remove**

- Remove [wand/insert applicator name] [from] [side/carrier/holder/clip/bottle].
- [Pull connector by slightly twisting from [side/carrier/holder/clip/bottle] and unwrap hose completely.]
- Remove protective strip from battery compartment to activate batteries.

2. Connect

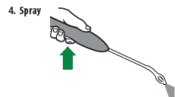
- Insert [insert color] plug at end of hose into [insert color] [spout/knob/opening] on cap until it clicks. Flip up spout. Alternative Text: [Flip up [insert color] spout until fully upright]. Twist [spout/knob] to ON.] [Pull spout up.] [Spout must remain up while spraying.]
- Remove [protective] [cone/dome/guard/shield] [from side slip/from bottle] and attach over nozzle [for targeted application].

3. Extend



- Flip open [wand/insert applicator name] until it clicks and locks into position.
- [Expend [wand/fully]].

4. Spray



- Slide trigger lock on [wand/insert applicator name] handle to the unlocked position.
- Twist nozzle to desired spray pattern.
- Point [insert applicator name] nozzle away from body and hold [insert color] trigger for continuous spray.

HOW TO APPLY/USE:

Follow illustrations and instructions above. Twist nozzle at end of [applicator name] wand to desired spray pattern. Point [applicator name] wand away from body and hold (color of trigger) trigger for continuous spray. Release trigger to stop spray. Aim at center of weed and spray to lightly cover.

[HOW TO APPLY/USE WHEN USING MARKER]

[Follow illustrations and instructions above. Turn sprayer nozzle to desired position – FOAM or STREAM. FOAM marks treated weeds allowing you to easily see where you've sprayed. STREAM provides a coarse spray that does not foam. [Both settings provide the same weed control results.] Point [applicator name] wand away from body and hold (color of trigger) trigger for continuous spray. Release trigger to stop spray. Aim at center of weed and spray to lightly cover.]

[After Use: twist nozzle to OFF position. [Engage trigger lock.] Flip the [applicator name] wand closed and store on the side [carrier], [holder], [clip].]

Important Use Information: Do not submerge in water. When storing sprayer for long periods, remove batteries.

To replace batteries: Open battery compartment at bottom of [applicator name] wand [with a small screwdriver]. Remove used batteries and replace four/[insert number] new AA batteries in correct position as marked per diagram inside battery compartment. Securely close battery compartment door [and screw closed firmly]. Always use a complete set of the same type when replacing batteries. [Best performance is achieved with alkaline batteries.] Never mix alkaline, carbon-zinc or rechargeable batteries.

Optional Trouble shooting Section for Battery Powered Wand

[Troubleshooting Tips:]

Problem: Sprayer does not spray (function).

Possible Cause: Batteries not installed properly.

Solution: See instructions for correct battery placement.

Problem: Sprayer makes a straining noise (Sprayer runs but nothing (no product) comes out).

Possible Cause: Nozzle is turned Off.

Solution: Turn nozzle to (desired) spray setting (position).

Possible Cause: Red (color) plug at end of hose is not flipped up.

Solution: Insert (color of plug) plug at end of hose into (color of spout) spout on cap until it clicks and flip up spout.

Possible Cause: Sprayer is not primed.

Solution: Press and hold button on sprayer for about X (10, 15, 20, 30) seconds to prime the sprayer.

Problem: Spray pattern is weak (or uneven) (product flow is uneven or dribbles out of nozzle).

Possible Cause: Weak batteries.

Solution: Install a fresh set of batteries.

Possible Cause: Red (color of plug) plug at end of hose is not flipped up.

Solution: Insert (color of plug) plug at end of hose into (color of spout) spout on cap **until it clicks.** (Attach

coupler to the cap) and flip up spout. Possible Cause: Nozzle not fully open.
Solution: Turn nozzle to (desired) spray setting (position).]

[Applicator Option 5]

[Easy-Shot System]

[[Applicator Name] [Applicator] Directions]

[Insert:] Attach refill bottle by removing cap and twisting into [applicator name]. Do not over-tighten.

[Illustration #1: graphic representation of sprayer instructions for inserting refill receptacle]

[Spray:] Twist nozzle at end of wand to desired spray pattern. Hold [color of trigger] trigger for continuous spray. [Illustration #2: graphic representation of proper sprayer use & instructions]

For hard to reach areas

[Extend:] Extend wand by sliding wand forward until it locks into place.

[Remove:] Remove wand and aim at target while holding the [applicator name] facing toward the ground.

[OPTIONAL DIRECTIONS]:

[[Clean:] Remove cartridge and clean applicator after each use. [Always clean applicator before switching from one product to another.] See [applicator name] applicator for cleaning directions.

- Remove refill cartridge from [applicator name]
- Remove cap from cleaning cartridge and fill with tap water
- Replace cap and insert cleaning cartridge by twisting into [applicator name]
- Spray in an area that is designated by this product label until cleaning cartridge is empty.]

HOW TO APPLY/USE: [icon]

Follow illustrations and instructions above. Twist nozzle at end of sprayer to desired spray pattern. Point sprayer away from body and hold [color of trigger] trigger for continuous spray. Aim at center of weed and spray to lightly cover.

[[After Use:] Twist nozzle to CLOSED position.]

Important Use Information: Do not submerge in water. When storing sprayer for long periods, remove batteries.

To replace batteries: Open battery compartment on side of [applicator name]. Remove used batteries and replace with four/[insert number] new AA batteries in correct position as marked per diagram inside battery compartment. Securely close battery compartment door. Always use a complete set of the same type when replacing batteries. Never mix alkaline, carbon-zinc or rechargeable batteries.

[Applicator Option 6]

[Optional [Reuse And] Refill Directions]

Refill only with [F7214 RTU Herbicide] [this product].

How to attach [Applicator Name] [applicator] to [Product name] [Refill Bottle]:

Removing [Applicator Name] [applicator] from original bottle:

- Remove the [applicator name] [applicator] by pulling the [color of plug] plug from the [color of spout] spout on cap. [Illustration: graphic representation of sprayer instructions for this step]
- At the bottom of the side [clip] [carrier] [holder] press the middle tab up and slide the [clip] [carrier] [holder] upwards to remove it from the bottle. [Illustration: graphic representation of sprayer instructions for this step]

Adding [Applicator name] [applicator] to [Product Name]:

- Slide the side [clip] [carrier] [holder] downward on the knob located [at right-hand] [on the] side of the refill container. [Illustration: graphic representation of sprayer instructions for this step]
- Insert [color of plug] plug at end of hose into [color of spout] spout on cap [until it clicks]. [Illustration: graphic representation of sprayer instructions for this step]

How to refill [Product Name] with [Quick Pump] [Applicator Name] [applicator]:

- Remove the pump handle on the Quick Pump/Applicator Name by twisting it counterclockwise. [Illustration: graphic representation of sprayer instructions for this step]
- Remove the cap from the [Product Name] bottle/container. [Illustration: graphic representation of sprayer instructions for this step]
- Pour the product carefully and directly into the [Quick Pump/Applicator Name] container. Do Not fill above [2"/3"/4"] from the top of the container. DO NOT add water. [Illustration: graphic representation of refilling RTU container]
- Secure the pump handle back on the container by twisting it clockwise until tight. [illustration: graphic representation of proper re-installation of sprayer to container]

[Applicator Option 7]

PUMP 'N Go [2]

Instructions for Printing on the Wand and Handle:

Wand: STORAGE POSITION Push button and pull nozzle end. Extend to spray position. [insert arrow graphic] SPRAY POSITION

Handle: [insert arrow graphic] RELEASE PRESSURE AFTER USE Push handle to cap & turn. RETIGHTEN.

1. CUT [insert graphics]

Carefully cut the [insert number/two] [insert color/white] zip ties securing the hose and pump handle with scissors. Use caution not to cut the [insert color/ white] hose.

2. CONNECT [insert graphics]

Unwind hose. Firmly push the connector at the end of the hose onto the spout on the pump, until it locks into place.

3. EXTEND WAND

Lift sprayer wand off bottle. Push [insert color/yellow] button while pulling out on the wand nozzle tip. Fully extend wand until [insert color/yellow] button snaps into SPRAY POSITION. NOTE: [insert color/white] trigger will not function until wand is fully extended and [insert color/yellow] button is visible in the SPRAY POSITION.

4. PUMP

Make sure handle is screwed on tightly or the bottle will not pressurize. Pump container [insert number of pumps to prime/X to Y] times to pressurize bottle. A full bottle requires fewer pumps than an empty bottle. Pumping to the higher range will provide longer spray duration. After pumping, push pump down and turn handle clockwise to lock into carrying position. NOTE: This bottle is designed to expand under pressure and cannot be over-pressurized.

5. SPRAY

Aim wand. Spray by pushing down [insert color/white] trigger with thumb. Adjust spray pattern by rotating [insert color/white] nozzle tip up to one-half rotation. Spray weeds until thoroughly wet.

6. STORE

When finished spraying, push the [insert color/yellow] button and [retract/push] the wand until the [insert color/yellow] button snaps back into the original storage position. Place wand back onto [the top of] the bottle [in the integrated holster] with nozzle [facing down/tip extended through the eyelet opening].

7. DEPRESSURIZE

Push pump handle all the way down and turn pump handle and cap counter-clockwise to relieve pressure, then retighten to store.

[Applicator Option 8]

BATTERY OPERATED SPRAYER with Wand

Wand Safety Sticker or Printed on the Handle: Always lock after use. **Alternative Text:** [Always lock sprayer when opening and closing]

1. Remove

- Remove [wand/insert applicator name] [from] [side/carrier/holder/clip/bottle].
- Pull connector by slightly twisting from [side/carrier/holder/clip/bottle] and unwrap hose completely.
- Remove protective strip from battery compartment to activate batteries.

2. Connect

- Insert [insert color] plug at end of hose into [insert color] [spout/knob/opening] on cap until it clicks. Flip up spout. **Alternative Text:** [Flip up [insert color] spout until fully upright] [Twist [spout/knob] to ON.] [Pull spout up.] [Spout must remain up while spraying.]

3. Extend

- Flip open [wand/insert applicator name] until it clicks and locks into position.

4. Spray

- Slide trigger lock on [wand/insert applicator name] handle to the unlocked position.
- Twist nozzle to desired spray pattern.
- Point [insert applicator name] nozzle away from body and hold [insert color] trigger for continuous spray.

Important Use Information: Do not submerge in water. When storing sprayer for long periods, remove batteries.

To Replace Batteries: Open battery compartment at bottom of [wand/insert applicator name] with a small screwdriver

Remove used batteries and replace with [insert number/four] new [AA/ alkaline] batteries [in correct position as marked inside battery compartment]

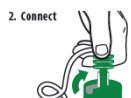
Securely close battery compartment door and screw closed firmly. Always use a complete set of the same type when replacing batteries. Best performance is achieved with alkaline batteries. Never mix alkaline, carbon-zinc or rechargeable batteries. Dispose of used batteries according to manufacturer's instructions or in household trash.

[Applicator Option 9]**BATTERY OPERATED SPRAYER with Extendable Wand**

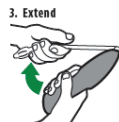
Wand Safety Sticker or Printed on the Handle: Always lock after use. **Alternative Text:** [Always lock sprayer when opening and closing]

1. Remove

- Remove [wand/insert applicator name] [from] [side/carrier/holder/clip/bottle].
- [Pull connector by slightly twisting from [side/carrier/holder/clip/bottle] and unwrap hose completely.]
- Remove protective strip from battery compartment to activate batteries.

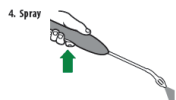
2. Connect

- Insert [insert color] plug at end of hose into [insert color] [spout/knob/opening] on cap until it clicks. Flip up spout. **Alternative Text:** [Flip up [insert color] spout until fully upright.] [Twist [spout/knob] to ON.] [Pull spout up.] [Spout must remain up while spraying.]
- [Remove [protective] [cone/dome/guard/shield] [from side clip/from bottle] and attach over nozzle [for targeted application].]

3. Extend

- Flip open [wand/insert applicator name] until it clicks and locks into position.
- [Extend [wand/fully]].

4. Spray



- Slide trigger lock on [wand/insert applicator name] handle to the unlocked position.
- Twist nozzle to desired spray pattern.
- Point [insert applicator name] nozzle away from body and hold [insert color] trigger for continuous spray.

Important Use Information: Do not submerge in water. When storing sprayer for long periods, remove batteries.

To Replace Batteries: Open battery compartment at bottom of [wand/insert applicator name] with a small screwdriver.

Remove used batteries and replace with [insert number/four] new [AA/alkaline] batteries [in correct position as marked inside battery compartment]

Securely close battery compartment door and screw closed firmly. Always use a complete set of the same type when replacing batteries. Best performance is achieved with alkaline batteries. Never mix alkaline, carbon-zinc or rechargeable batteries. Dispose of used batteries according to manufacturer's instructions or in household trash.

[Optional Sections for Refill and Refillable Containers Only]

[Refill Container]

Use this product to refill the empty [insert brand name for 2217-953] container by carefully pouring the entire content of the 1.25 gal refill bottle [container] directly into the ready-to-use container equipped with spray applicator. DO NOT add water.]

[HOW TO REFILL]

For Ready-To-Use Containers with Applicators Intended to be Reused/Refilled

To refill this product, use the [insert brand name for 2217-953] refill, and carefully pour the entire content of the 1.25 gal [XXX fl.oz./XXX gal] refill bottle [container] directly into this empty ready-to-use container equipped with spray applicator. DO NOT add water.]

[Optional Sections for Battery Operated Sprayers Only]

IMPORTANT SPRAYER INFORMATION

- Read and follow all directions before use.
- [insert applicator name] is to be used only with F7214 RTU Herbicide [insert Alterate Brand Name] products with a quick-connect cap. [insert applicator name] may not be compatible with other products.
- Do not drop or throw sprayer.
- Do not [submerge/immerse] sprayer in water. Never place sprayer in dishwasher.
- Do not use soap or other cleaning agents to clean sprayer. If necessary, clean outer sprayer surface only with damp towel.
- Insert batteries in their correct (+/-) position. Remove batteries for winter storage or when storing product for long periods of time.
- Always use a complete set of new alkaline batteries. Never mix alkaline, carbon-zinc, or rechargeable batteries.
- Always follow the manufacturer's instructions for battery disposal and use.
- Purge [insert applicator name] of liquid for winter storage or place [wand/insert applicator name] in a heated storage area.

TROUBLESHOOTING SECTION FOR BATTERY OPERATED SPRAYERS

[Troubleshooting Section for [Battery Powered/Comfort Wand/One-Touch Wand/Extendable Wand/Sure Shot Wand/insert applicator name] Directions]

Troubleshooting Tips:

Problem: Sprayer does not [spray/function].

Possible Cause: Batteries not installed properly.

Solution: See instructions for correct battery placement.

Problem: Sprayer makes a straining noise. [Sprayer runs but no product comes out].

Possible Cause: Nozzle is turned Off.

Solution: Twist nozzle to desired spray pattern.

Possible Cause: [insert color] plug at end of hose is not [flipped up/open].

Solution: Insert [insert color] plug at end of hose into [insert color] [spout/knob/opening] on cap until it clicks and [flip up spout/flip up [insert color] spout until fully upright.] [twist [spout/knob] to ON.] [pull spout up.]

Possible Cause: Sprayer is not primed.

Solution: Press and hold button on sprayer for about [10/15/20/30] seconds to prime the sprayer.

Problem: Spray pattern is weak [or uneven]. [Product flow is uneven or dribbles out of nozzle.]

Possible Cause: Weak batteries.

Solution: Install a fresh set of alkaline batteries.

Possible Cause: [insert color] plug at end of hose is not in the fully upright position.

Solution: Insert [insert color] plug at end of hose into [insert color] [spout/knob/opening] on cap until it clicks. [Attach coupler to the cap] and [flip up spout/flip up [insert color] spout until fully upright] [twist [spout/knob] to ON.] [pull spout up.]

Possible Cause: Nozzle not fully open.

Solution: Twist nozzle to desired spray pattern.

[Applicator Option 10]

BATTERY POWERED SPRAYERS

Shake Well and Spray

1. Detach sprayer from bottle [holster] [optional image]
2. Unwrap hose [optional image]
3. Open top [optional image]
4. Firmly insert hose tip [optional image]
5. Select spray pattern [optional image]
6. [Press to] Spray [optional image]

END OF SPRAYER OPTIONS

CONTROL OF SEDGES (INCLUDING NUTSEDGES) AND GRASSES

Spray directly on emerged weeds to control or suppress sedges and some grasses. F7214 RTU HERBICIDE is effective against newly emerged and established sedges and grasses. Good spray coverage is needed for optimum control.

Grass and sedge weed species controlled or suppressed by F7214 RTU HERBICIDE:

Common Name	Scientific Name
Barnyardgrass	<i>(Echinochloa crus-galli)</i>
Broadleaf Signalgrass	<i>(Brachiaria platyphylla)</i>
Crabgrass, Large	<i>(Digitaria sanguinalis)</i>
Crabgrass, Smooth	<i>(Digitaria ischaemum)</i>
Deer-Tongue grass	<i>(Panicum clandestinum)</i>
Goosegrass*	<i>(Eleusine indica)</i>
Foxtail, giant	<i>(Setaria faberi)</i>
Foxtail, green	<i>(Setaria viridis)</i>
Foxtail, yellow	<i>(Setaria glauca)</i>
Kyllinga, cocks-comb	<i>(Kyllinga squamulata)</i>
Kyllinga, green	<i>(Kyllinga brevifolia)</i>

Kyllinga, false green	(<i>Kyllinga gracillima</i>)
Kyllinga, fragrant	(<i>Kyllinga sesquiflorus</i>)
Kyllinga, tufted	(<i>Kyllinga pumila</i>)
Japanese stiltgrass	(<i>Microstegium vimineum</i>)
Junglerice*	(<i>Echinochloa colona</i>)
Nutsedge, purple**	(<i>Cyperus rotundus</i>)
Nutsedge, yellow	(<i>Cyperus esculentus</i>)
Sedge, annual	(<i>Cyperus compressus</i>)
Sedge, globe*	(<i>Cyperus globulosus</i>)
Sedge, cylindrical	(<i>Cyperus retrorsus</i>)
Sedge, Surinam	(<i>Cyperus surinamensis</i>)
Sedge, Texas	(<i>Cyperus polystachyos</i>)

For optimal control of Goosegrass, Junglerice, or Purple or Globe sedge, repeat treatment every 3-4 weeks.

**Not for use in California

CONTROL OF ANNUAL, BIENNIAL & PERENNIAL BROADLEAF WEEDS

Spray directly on newly emerged weeds to control or suppress a wide range of broadleaf weeds.

Broadleaf weeds controlled or suppressed by F7214 RTU HERBICIDE:

Common Name	Scientific Name
Bedstraw, catchweed	(<i>Galium aparine</i>)
Beggarticks+	(<i>Bidens frondosa</i>)
Beggarweed, Florida	(<i>Desmodium tortuosum</i>)
Bindweed, field	(<i>Convolvulus arvensis</i>)
Bittercress	(<i>Cardamine spp.</i>)
Black medic	(<i>Medicago lupuline</i>)
Buttercups	(<i>Ranunculus spp.</i>)
Buttonweed, common [poorjoe]	(<i>Diodia teres</i>)
Carolina geranium	(<i>Geranium carolinianum</i>)
Carpetweed	(<i>Mollugo verticillata</i>)
Chickweed, common	(<i>Stellaria media</i>)
Chickweed, mouseear	(<i>Cerastium vulgatum</i>)
Cinquefoil	(<i>Potentilla spp.</i>)
Clover	(<i>Trifolium spp.</i>)
Clover, alyce	(<i>Alysicarpus ovalifolius</i>)
Clover, hop	(<i>Trifolium campestre</i>)
Clover, red	(<i>Trifolium pretense</i>)
Clover, white	(<i>Trifolium repens</i>)
Cudweed	(<i>Gnaphalium spp.</i>)
Dandelion	(<i>Taraxacum officianale</i>)
Dandelion, false	(<i>Microseris cuspidate</i>)
Dayflower, common	(<i>Commelina diffusa</i>)
Dock, Curly	(<i>Rumex crispus</i>)
Dollarweed [pennywort]	(<i>Hydrocotyle spp.</i>)
Eclipta	(<i>Eclipta prostrata</i>)
Evening primrose	(<i>Oenother biennis</i>)
Fiddleneck	(<i>Amsinckia spp.</i>)
Filaree	(<i>Erodium spp.</i>)
Filaree, redstem	(<i>Erodium cicutarium</i>)
Galinsoga	(<i>Galinsoga ciliate</i>)
Goldenrod	(<i>Solidago spp.</i>)
Ground ivy	(<i>Glechmea hederacea</i>)
Groundsel, common	(<i>Senecio vulgaris</i>)
Henbit	(<i>Lamium amplexicaule</i>)
Knawel	(<i>Scleranthus annuus</i>)
Knotweed, prostrate	(<i>Polygonum aviculare</i>)
Kochia	(<i>Kockia scoparia</i>)

Lambsquarters, common	(<i>Chenopodium album</i>)
Lawn burweed (Spurweed)	(<i>Soliva pterosperma</i>)
Lespedeza, common	(<i>Lespedeza striafa</i>)
London Rocket	(<i>Sisymbrium irio</i>)
Mallow, common	(<i>Malva neglecta</i>)
Morningglory	(<i>Ipomea spp.</i>)
Morningglory, entireleaf	(<i>Ipomoea hederacea var. integruscula</i>)
Morningglory, ivyleaf	(<i>Ipomoea hederacea</i>)
Morningglory, palmleaf	(<i>Ipomoea wrightii</i>)
Morningglory, pitted	(<i>Ipomoea lacunose</i>)
Morningglory, tall	(<i>Ipomoea purpurea</i>)
Parsley piert	(<i>Alchemilla arvensis</i>)
Pennywort (Dollarweed)	(<i>Hydrocotyle spp.</i>)
Pigweed, Redroot	(<i>Amaranthus retroflexus</i>)
Pigweed, Smooth	(<i>Amaranthus hybridus</i>)
Pigweed, Tumble	(<i>Amaranthus albus</i>)
Pineapple weed	(<i>Matricaria matricariodes</i>)
Plantain, Broadleaf	(<i>Plantago comanalata</i>)
Plantain, Buckhorn	(<i>Plantago lanceolata</i>)
Plantain, Narrowleaf	(<i>Plantago narowiforma</i>)
Puncturevine	(<i>Tribulus terrestris</i>)
Purslane, common	(<i>Portulaca oleracea</i>)
Pursley, Florida	(<i>Richardia scabra</i>)
Redweed	(<i>Melochia corchorifolia</i>)
Shepherd's Purse	(<i>Capsella bursa-pastoris</i>)
Smartweed, Pennsylvania	(<i>Polygonum pensylvanicum</i>)
Sorrel, Red	(<i>Rumex acetosella</i>)
Speedwell	(<i>Veronica spp.</i>)
Speedwell, slender	(<i>Veronica filiformis</i>)
Speedwell, thymeleaf	(<i>Veronica serpyllifolia</i>)
Spurge, (annuals)	(<i>Euphorbia spp.</i>)
Spurge, prostrate	(<i>Euphorbia humistrata</i>)
Spurge, spotted	(<i>Euphorbia maculate</i>)
Star-of-Bethlehem	(<i>Ornithogalum umbellatum</i>)
Velvetleaf	(<i>Abutilon theophrasti</i>)
Violet, wild	(<i>Viola pratincola</i>)
Violet, Johnny-Jump-Up	(<i>Viola rafeinesquii</i>)
Wild garlic	(<i>Allium vineale</i>)
Wild onion	(<i>Allium canadense</i>)
Woodsorrel, creeping	(<i>Oxalis corniculata</i>)
Woodsorrel, yellow	(<i>Oxalis stricta</i>)

Certain listed weeds may require more than one application to achieve season-long control. If listed weeds are not controlled by the initial application, apply a second application 4 to 6 weeks after the initial treatment.

+ Not for use in California

STORAGE AND DISPOSAL

Pesticide Storage

Keep from freezing. Do not store below 32°F. Keep out of reach of children and animals. Store in original container only. Store in a cool, dry place, preferably in a locked storage area and avoid excess heat.

Pesticide Disposal and Container Handling



Non-refillable container. Do not reuse or refill this container. If empty: Offer for recycling, if available, or dispose of in trash.

If partially filled: Call your local solid waste agency for disposal instructions. Never place unused product down any indoor or outdoor drain.

Notice: To the extent consistent with applicable law, buyer assumes all risks of use, storage or handling of this product not in accordance with label directions.

[Spanish translation]

on last page of booklet label attached to bottle, also attach the following

[icon] [icon phone]  [icon computer]  Questions, Comments or Medical Information [phone number] [1-800-265-0761][or visit our website at www.imageforweeds.com]

Optional Marketing Claims:

- Kills Crabgrass, Dandelion, Ground Ivy, [Yellow] [& Purple*] Nutsedge, Kyllinga and over XXX other tough Weeds
- Selective Postemergence Control of Annual Grasses, Broadleaf weeds, and Sedges in Residential Lawns
- Rainfast [Rainproof] in 30 minutes against annual grasses and sedges [against listed weed (s)]
- Rainproof in 2 hours
- 100% Satisfaction Guaranteed* (or your money back)
 - *When used as directed
- All-in-One Lawn Weed Killer
- All-in-One Weed Killer
- All-in-One Weed Killer for Lawns
- Also Kills Dandelion and Clover Plus XXX Other Listed Weeds
- [Consistently] fast control of tough weeds like dandelion, spurge, clover, plantain, ground ivy (and various other listed weeds).
- Control lawn weeds plus crabgrass in your lawn with ease!
- Controls XXX weeds!
- Controls crabgrass, dandelion, chickweed, knotweed, henbit, plantain, clover, spurge and many other listed broadleaf lawn weeds
- Controls crabgrass, [yellow] nutsedge, dandelion, chickweed, knotweed, henbit, plantain, clover, spurge and many other listed broadleaf lawn weeds.
- Controls even the tough weeds - To the Root!*
 - *Listed weeds
- Controls even the tough weeds ... roots and all!*
 - *Listed weeds
- [Double] [Dual] [Two-Way] Action] - Kills Broadleaf and Crabgrass Weeds*
 - *Listed weeds
- Dual Action Weed Control - Kills the Plant and the Root
- Easy & Fast Coverage
- Easy to use
- Effective [Broadleaf] Weed Protection
- Effectively Kills Both Broadleaf and certain weed grasses
- Effectively Protects Lawns from Broadleaf Weeds
- Fast Coverage
- Fast Results
- For home lawn care
- Gets the Root
- Guaranteed* Not to Harm [Lawns][Your Lawn]
 - *When used as directed
- Guaranteed* Results
 - *When used as directed
- Ideal for Spot Treatment
- Kills xx+ weeds
- Kills [insert listed weed]
- Kill crabgrass, [yellow] nutsedge & [other listed weed(s)] too!
- Kills [Controls] XXX broadleaf weeds.
- Kills [Dandelion], [Crabgrass], and [Clover], Plus [XXX] Other listed Weeds.
- Kills [Hard-to-Control] [Tough] Weeds
- Kills XXX Weeds (to the root)
- Kills All Major Broadleaf Weeds
- Kills Both Broadleaf and Crabgrass Weeds
- Kills Both Broadleaf and Grass Weeds
- Kills both Crabgrass & Broadleaf weeds
- Kills Crabgrass & Other Weeds in Your Lawn
- Kills Crabgrass plus Broadleaf Weeds
- Kills Even Tough Weeds roots & all

- Kills even tough weeds - To the Root!
- Kills Hard-to-Control Weeds
- Kills Listed Lawn Weeds Plus Crabgrass
- Kills Listed Lawn Weeds plus Crabgrass in One (Easy) Step
- Kills Listed Weeds
- Kills Over XXX (Lawn) Weeds (Plus Crabgrass in One Easy Step)
- Kills Over XXX Weeds!
- Kills (to) the root
- Kills the Weed, Kills the Root
- Kills the weeds, not the lawn
- Kills Weeds Fast
- No messy cleanup
- Save Time & Energy
- Simple to use
- Starts Working Immediately
- Starts Working on Contact
- Systemic [Herbicide] [Activity]
- Targets Weeds
- Two-in-One Product that Kills Crabgrass & Broadleaf Weeds
- Visible Results
- Visible results in [less than] 24 hours
- Visible results in [less than] a day
- Visible results overnight
- Visible results in [XX] hours
- Water based [formula]
- Won't Harm Lawns (when used as directed)
- Kill Crabgrass, Clover, Plantain, Chickweed and other listed weeds and sedges
- Controls Listed Annual Grasses, Broadleaf Weeds and Sedges
- Kills Tough Weeds [like] [Nutsedge] & [Crabgrass]
- Kills [Nutsedge] & [Crabgrass] in Warm and Cool Season Turf Grasses
- Kills [Nutsedge] & [Crabgrass] in Northern and Southern Turf Grasses
- Kills [Nutsedge] & [Crabgrass] in Northern Turf Grasses
- Kills [Nutsedge] & [Crabgrass] in Cool Season Turf Grasses
- Kills [Nutsedge] & [Crabgrass] in Southern Turf Grasses
- Kills [Nutsedge] & [Crabgrass] in Warm Season Turf Grasses
- [Nutsedge] & [Crabgrass] Killer
- [Nutsedge] & [Crabgrass] Killer in Warm and Cool Season Turf Grasses
- [Nutsedge] & [Crabgrass] Killer in Northern and Southern Turf Grasses
- [Nutsedge] & [Crabgrass] Killer in Cool Season Turf Grasses
- [Nutsedge] & [Crabgrass] Killer in Northern Turf Grasses
- [Nutsedge] & [Crabgrass] Killer in Warm Season Turf Grasses
- [Nutsedge] & [Crabgrass] Killer in Southern Turf Grasses
- [Nutsedge] & [Crabgrass] Killer for broadcast application
- For Northern and Southern Turf Grasses
- For Northern Turf Grasses
- For Warm and Cool Season Turf Grasses
- For Cool Season Turf Grasses
- Results are visible in days
- Complete kill occurs in 2-3 weeks
- Weed is yellowed in 1-2 days
- Ready to Use[– no mixing]
- Ready to Spray[– no mixing]
- Kills Roots, Shoots and nutlets
- Kills Tough Weeds, such as [Purple+ and Yellow] Nutsedge, Kyllinga, and other listed Sedges
- Also kills Plantain, Clover, Spurge, Woodsorrel, Knotweed, and other listed annual, biennial, and perennial broadleaf weeds

- Selective Herbicide for use in Northern Turf Grasses
- Selective Herbicide for use in Northern & Southern Turf Grasses
- Apply to growing and dormant grasses
- Uptake by both weed roots and shoots
- Dual action killing: Uptake by both leaves and roots
- Kills Tough Weeds like [Nutsedge], [Crabgrass], [Dandelion], [Wild Onion], [Dollarweed]
- Kills [purple* and] [yellow] Nutsedge
- [up to] 80% reduction in future weed populations*
 - *Listed weeds
- Activated by sunlight
- Great for [weed] resistance management [XXX] + Weeds Controlled
- More than XXX weeds controlled
- Over XXX weeds controlled
- Kills Nutsedge
- Nutsedge Killer
- [Also] Kills Dollarweed, Wild Onion, Sandbur, Annual Bluegrass
- Can be used to treat listed weeds in dormant Bermudagrass
- Kills summer and winter weeds
- For use on [Bermudagrass], [Zoysiagrass], [Tall Fescue], [Kentucky Bluegrass], and other listed grasses
- Kills [nutsedge], [chickweed], [white clover], [dandelion], [Kyllinga] and other listed weeds
- See A Weed [Spray A Weed]
- Dual Action Killing – uptake by both leaves and roots
-

Sprayer Claims

- Power Sprayer
- Comfort [Grip] [Sprayer]
- Comfort Grip Battery Powered Sprayer
- Easy To Use [Power Sprayer]
- Easy To Spray
- Point & Shoot [Point 'n Shoot]
- Easy Grip, Point 'n Shoot Sprayer
- Easy Grip
- Point & Shoot Sprayer [Point 'n Shoot]
- [Battery] [Operated] [Powered] Sprayer
- Easy to apply with the [battery operated] [powered] sprayer
- Simply point and spray
- No mixing, No pumping, No Hand Fatigue
- Continuous Spray
- Non-aerosol [spray]
- Spray[s] at any angle