

CODE
20028

NET WEIGHT
50 LBS.

MANEB 3.5 SULFUR 50 TOXAPHENE 5 DUST

FUNGICIDE INSECTICIDE

THIS PRODUCT IS NOT TO BE USED IN OR STORED AROUND THE HOME.

DIRECTIONS FOR USE

This material is designed for use as an undiluted dust for control of diseases and insects indicated on the crops below using a machine capable of thoroughly covering all plant surfaces.

BEANS: Bean rust, Powdery mildew, Armyworms, Corn earworms, Flea beetles, Climbing cutworms, Leafhoppers, Stink Bugs - Apply at the rate of 50 lbs. per acre when insects or diseases first appear, repeating as necessary. Under severe disease or insect conditions applications should begin earlier. Do not apply to green or snap beans within 7 days of harvest.

Do not feed forage treated with this material to dairy animals or animals being finished for slaughter.

PEPPERS: Anthracnose, Cercospora Leaf Spot, Armyworms, Flea beetles, Hornworms - Apply at the rate of 30-50 lbs. per acre when insects or diseases first appear, repeating as necessary. Do not apply to peppers within 5 days of harvest. Remove residues at time of harvest by washing or by brushing.

EGGPLANT: Phomopsis blight, Armyworms, Hornworms, Flea beetles - Apply at the rate of 30-50 lbs. per acre when insects or diseases first appear, repeating as necessary. Do not apply to eggplant within 5 days of harvest. Remove residues at time of harvest by brushing or washing.

E. P. A. Reg. No. 279-2899

ACTIVE INGREDIENTS:

*Maneb-----	3.5%
**Sulfur-----	50.0%
***Toxaphene-----	5.0%
INERT INGREDIENTS:-----	41.5%
	<u>100.0%</u>

*Manganese ethylene bisdithiocarbamate containing 0.71% Manganese expressed as metallic

**Sulfur fineness: 93% through 325 mesh.

***Technical Chlorinated Camphene 67-69% chlorine.

CAUTION

KEEP OUT OF REACH OF CHILDREN

Harmful if swallowed. Avoid breathing dust. Avoid contact with skin, eyes, or clothing. Avoid contamination of feed and foodstuffs.

NOTE TO PHYSICIAN: Toxaphene is a central nervous system stimulant. There is no specific antidote. Barbituric acid derivatives may be used for convulsions. Treat symptomatically.

For Emergency Assistance Call
716-735-3765

TOMATOES: Early blight, late blight, Septoria leaf spot, Gray leaf spot, Anthracnose, Armyworms, Cabbage looper, Cutworm, Pinworm, Tomato fruitworm and Tomato hornworms - Apply 35 to 50 lbs. per acre. Begin application when the tomato plants begin to vine, repeating at weekly intervals. Under severe disease or insect conditions applications should be commenced earlier and be made frequently. Do not apply within 5 days of harvest.

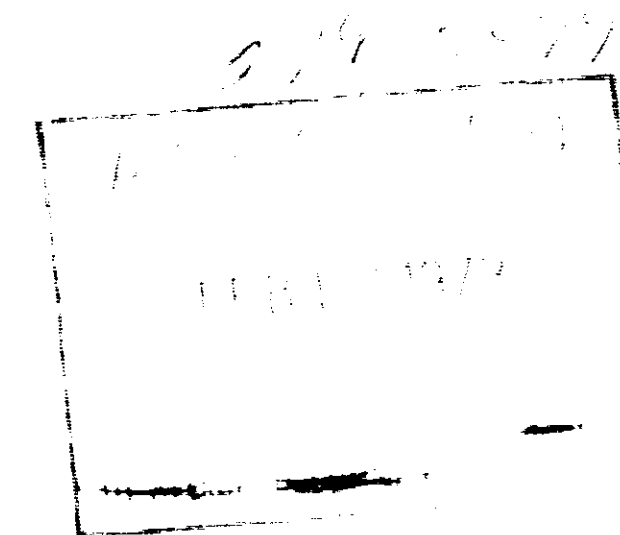
USAGE CAUTIONS

Applications of dusting or spraying materials containing sulfur should not be made just prior to or during periods of excessively high temperatures.

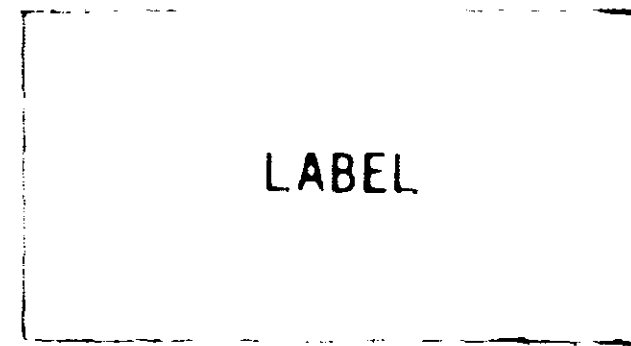
This product is toxic to fish and wildlife. Keep out of any body of water. Birds feeding on treated areas may be killed. Do not apply when weather conditions favor drift from areas treated. Do not apply where runoff is likely to occur. Do not contaminate water by cleaning of equipment, or disposal of wastes. Apply this product only as specified on this label.

This product is toxic to bees and should not be applied when bees are actively visiting the area.

Dispose of wastes by burying in non-crop land away from water supplies. Bags should be disposed of by burying with wastes or by burning. Keep out of smoke.



ADDITIONAL INFORMATION APPEARING ON BAGS TO WHICH THIS LABEL WILL BE ATTACHED.



15100-112-019

Dealers Should Sell in Original Packages Only.

DO NOT ALLOW THIS MATERIAL TO DRIFT ONTO NEIGHBORING CROPS OR NON-CROP AREAS OR USE IN A MANNER OR AT A TIME OTHER THAN IN ACCORDANCE WITH LABEL DIRECTIONS BECAUSE ANIMAL, PLANT OR CROP INJURY, ILLEGAL RESIDUES OR OTHER UNDESIRABLE RESULTS MAY OCCUR.

TERMS OF SALE OF THIS PRODUCT ARE SUBJECT TO THE TERMS AND CONDITIONS OF THE FOLLOWING CONTRACT.

WARRANTY: The manufacturer warrants that the product is as described on the label and that it is free from defects in material and workmanship. EXCEPT AS WARRANTED, THE PRODUCT IS NOT TO BE USED IN A MANNER OTHER THAN THAT INDICATED ON THE LABEL. THE WARRANTY HEREON IS LIMITED TO THE PRODUCT.

DAMAGES: The manufacturer is not liable for damages, including consequential damages, arising from the use of this product in a manner other than that indicated on the label. The manufacturer is not liable for damages, including consequential damages, arising from the use of this product in a manner other than that indicated on the label.

EXCEPT FOR THE LIMITED WARRANTY SET FORTH IN THESE DIRECTIONS, THE USER OF THIS PRODUCT SHALL BE RESPONSIBLE FOR THE PROPER USE OF THE PRODUCT. THE USER SHALL BE RESPONSIBLE FOR THE PROPER USE OF THE PRODUCT. THE USER SHALL BE RESPONSIBLE FOR THE PROPER USE OF THE PRODUCT.

MADE IN THE U.S.A. BY



NIAGARA CHEMICAL DIVISION

1000 WEST 10TH AVENUE

WENATCHEE, WASHINGTON 98806

