

Code 30294

Net Contents  
Gallons

# Summer Flowable Emulsion

## Light-Medium

## Insecticide-Miticide

EPA Reg. No. 279-1861 ZA EPA Est., 279-

Active Ingredient:	By Wt.
Petroleum Oil .....	80.00%
Inert Ingredients: .....	20.00%
	100.00%

Classification—Light Medium  
Unsulphonated Residue—92% Minimum  
Kolofog®—FMC Trademark

**KEEP OUT OF REACH OF CHILDREN**

### CAUTION

#### PRECAUTIONARY STATEMENTS

##### Hazards to Humans (& Domestic Animals)

**Caution**  
Harmful if swallowed. Avoid inhalation of spray mist.  
**For Emergency Assistance Call 716—735-3765.**  
See Other Panels for Additional Precautionary Information.



FMC Corporation  
Agricultural Chemical Group  
2000 Market Street  
Philadelphia Pennsylvania 19103

3 80-PA

#### Environmental Hazards

Fish and other beneficial aquatic life may be killed by this product. Do not apply when weather conditions favor drift from the areas treated. Do not apply where runoff is likely to occur. Do not contaminate water by cleaning of equipment or disposal of wastes. Keep out of lakes, ponds or streams.

#### DIRECTIONS FOR USE

It is a violation of Federal law to use this product in a manner inconsistent with its labeling.

#### Storage and Disposal

Do not contaminate water, food or feed by storage or disposal. Open dumping is prohibited. Pesticide, spray mixture or rinsate that cannot be used or chemically reprocessed should be disposed of in a landfill approved for pesticides or buried in a safe place away from water supplies. Do not reuse empty 28 gallon drum. Return to pesticide supplier. Alternatively, to dispose of container, triple rinse (or equivalent) and offer for recycling, reconditioning or disposal in approved landfill or bury in a safe place. Do not cut or weld this container. Consult Federal, State or local disposal authorities for approved alternative procedures.

#### Caution

Use only in equipment with mechanical or paddle agitation. Use efficient equipment. Avoid application of oil sprays just prior to or during hot weather, rainy weather or drying winds. Apply when temperature is above 40° F. Do not apply just prior to freezing weather. Use only when trees are in healthy condition and when moisture conditions are sufficient. Avoid overspraying.

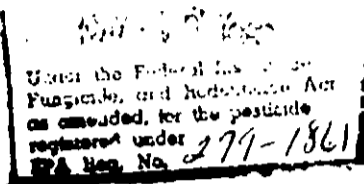
Do not make an oil application within 2 weeks prior to or after an application of sulphur. On Citrus do not make an oil application within 60 days prior to or after an application of sulphur.

Do not use in a manner or at a time other than in accordance with label directions because animal, plant or crop injury, illegal residues or other undesirable results may occur.

#### Directions for Mixing

Before using this product, be sure the spray tank is clean and contains just enough water to cover the agitator shaft. With the agitator in motion (120 RPM or more), add the amount of spray oil required for a full tank. Pump this mixture through the overflow and back into the tank for a minute or two. The mixture should turn white, indicating good emulsification, then fill the tank with water. Keep agitator running at all times.

If an injector is used, first add 25 to 50 gallons of water to tank with engine running to provide good pressure; then put injector suction tube into the measured amount of spray oil, opening injector valve to allow the oil to be sucked into the tank. Fill the tank with water.



**Do not use if material does not emulsify. not use in undiluted form.**

#### Directions for Use

Apply when pests first appear and repeat as necessary. Apply following recommended rates in sufficient water to thoroughly cover one acre.

**Apples, Pears, Peaches, Plums, Prunes, Cherries, Almonds:** Mites—Use 1 to 1½ gallons per 100 gallons of water in delay-mant or summer periods. Certain varieties of plums and prunes be injured by oil sprays, check tolerance to oil prior to treatment.

**Pears:** After harvest for the control of Blister Mite, Pear Mite, Spider Mites. Use 1 to 2 gallons in combination with 4 to 6 p.p. of Kolofog per 100 gallons of dilute spray.

**Oranges, Lemons, Grapefruit:** Yellow Scale, Citrus Scale, Scale, Brown Soft Scale—Use 1 to 2 gallons of this material per 100 gallons of water.

**Olives:** Olive Scale, Black Scale, Oleander Scale. Use 1 to 2 gallons of this material per 100 gallons of water. Apply through post harvest periods.

#### Dealers Should Sell in Original Packages

**Terms of Sale or Use:** On purchase of this product, buyer agrees to the following conditions:

**Warranty:** FMC makes no warranty, expressed or implied, concerning the use of this product other than indicated on the label. Except as warranted, the product is sold as is. Buyer and user assume all use and or handling and or storage of this material when such use and or handling and or storage is contrary to label instructions.

**Directions and Recommendations:** Follow directions carefully and method of application, weather and crop conditions, mix with other chemicals not specifically recommended and other information factors in the use of this product are beyond the control of FMC and are assumed by buyer at his own risk.

**Use of Product:** FMC's recommendations for the use of this product are based upon tests believed to be reliable. The use of this product beyond the control of the manufacturer, no guarantee, expressed or implied, is made as to the effects of such or the results to be obtained if not used in accordance with directions or established safe practice.

**Damages:** Buyer's or user's exclusive remedy for damages for breach of warranty or negligence shall be limited to direct damages exceeding the purchase price paid and shall not include incidental or consequential damages.

30294

Net Contents  
Gallons

# Immer Flowable Emulsion

Light-Medium

Insecticide-Miticide

EPA No. 279-1861 ZA EPA Est. 279-

Ingredient:	By Wt.
Paraffin Oil	80.00%
Active Ingredients:	20.00%
	100.00%

Light-Medium  
Residue—92% Minimum  
FMC Trademark

KEEP OUT OF REACH OF CHILDREN

## CAUTION

### PRECAUTIONARY STATEMENTS

Hazardous to Humans (& Domestic Animals)

Avoid inhalation of spray mist  
For Assistance Call 716-735-3765.  
For Additional Precautionary Information.



Corporation  
Agricultural Chemical Group  
Market Street  
Philadelphia Pennsylvania 19103

### Environmental Hazards

Fish and other beneficial aquatic life may be killed by this product. Do not apply when weather conditions favor drift from the areas treated. Do not apply where runoff is likely to occur. Do not contaminate water by cleaning of equipment or disposal of wastes. Keep out of lakes, ponds or streams.

### DIRECTIONS FOR USE

It is a violation of Federal law to use this product in a manner inconsistent with its labeling.

### Storage and Disposal

Do not contaminate water, food or feed by storage or disposal. Open dumping is prohibited. Pesticide, spray mixture or rinsate that cannot be used or chemically reprocessed should be disposed of in a landfill approved for pesticides or buried in a safe place away from water supplies. Do not reuse empty 28 gallon drum. Return to pesticide supplier. Alternatively, to dispose of container, triple rinse (or equivalent) and offer for recycling, reconditioning or disposal in approved landfill or bury in a safe place. Do not cut or weld this container. Consult Federal, State or local disposal authorities for approved alternative procedures.

### Caution

Use only in equipment with mechanical or paddle agitation. Use efficient equipment. Avoid application of oil sprays just prior to or during hot weather, rainy weather or drying winds. Apply when temperature is above 40° F. Do not apply just prior to freezing weather. Use only when trees are in healthy condition and when moisture conditions are sufficient. Avoid overspraying.

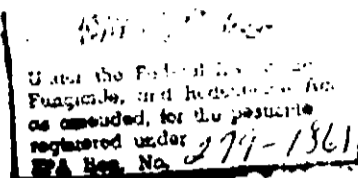
Do not make an oil application within 2 weeks prior to or after an application of sulphur. On Citrus do not make an oil application within 60 days prior to or after an application of sulphur.

Do not use in a manner or at a time other than in accordance with label directions because animal, plant or crop injury, illegal residues or other undesirable results may occur.

### Directions for Mixing

Before using this product, be sure the spray tank is clean and contains just enough water to cover the agitator shaft. With the agitator in motion (120 RPM or more), add the amount of spray oil required for a full tank. Pump this mixture through the overflow and back into the tank for a minute or two. The mixture should turn white, indicating good emulsification, then fill the tank with water. Keep agitator running at all times.

If an injector is used, first add 25 to 50 gallons of water to tank with engine running to provide good pressure, then put injector suction tube into the measured amount of spray oil, opening injector valve to allow the oil to be sucked into the tank. Fill the tank with water.



Do not use if material does not emulsify. Do not use in undiluted form.

### Directions for Use

Apply when pests first appear and repeat as necessary. Apply the following recommended rates in sufficient water to thoroughly cover one acre.

**Apples, Pears, Peaches, Plums, Prunes, Cherries, Almonds:** Spider Mites—Use 1 to 1½ gallons per 100 gallons of water in delayed dormant or summer periods. Certain varieties of plums and prunes may be injured by oil sprays, check tolerance to oil prior to treatment.

**Pears:** After harvest for the control of Blister Mite, Rust Mite, Red Spider Mites—Use 1½ to 2 gallons in combination with 4 to 5 pounds of Kotofog per 100 gallons of dilute spray.

**Oranges, Lemons, Grapefruit:** Yellow Scale, Citrus Scale, Red Scale, Brown Soft Scale—Use 1½ to 2 gallons of this material per 100 gallons of water.

**Olives:** Olive Scale, Black Scale, Oleander Scale—Use 1½ to 2 gallons of this material per 100 gallons of water. Apply in the post bloom through post harvest periods.

### Dealers Should Sell in Original Packages Only.

**Terms of Sale or Use:** On purchase of this product, buyer and user agree to the following conditions:

**Warranty:** FMC makes no warranty, expressed or implied, concerning the use of this product other than indicated on the label. Except as so warranted, the product is sold as is. Buyer and user assume all risk of use and/or handling and/or storage of this material when such use and/or handling and/or storage is contrary to label instructions.

**Directions and Recommendations:** Follow directions carefully. Timing and method of application, weather and crop conditions, mixture with other chemicals not specifically recommended and other influencing factors in the use of this product are beyond the control of the seller and are assumed by buyer at his own risk.

**Use of Product:** FMC's recommendations for the use of this product are based upon tests believed to be reliable. The use of this product being beyond the control of the manufacturer, no guarantee, expressed or implied, is made as to the effects of such or the results to be obtained if not used in accordance with directions or established safe practice.

**Damages:** Buyer's or user's exclusive remedy for damages for breach of warranty or negligence shall be limited to direct damages not exceeding the purchase price paid and shall not include incidental or consequential damages.