

[270-99]



WIPE PLUS

FLY PROTECTANT

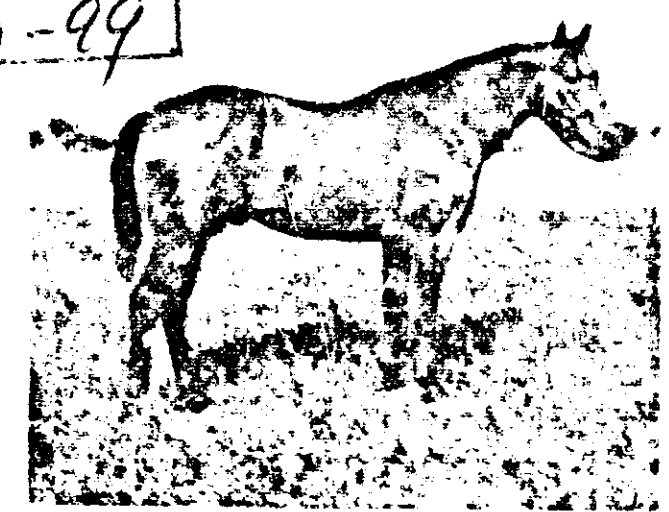
NOW
CONTAINS
SBA-90*

(After
long-standing
non-use,
mix contents
by inverting
several times)

(After
long-standing
non-use,
mix contents
by inverting
several times)

Just wipe it on horses and ponies. Repels Horse Flies, House Flies, Stable Flies, Deer Flies, Gnats, and Mosquitoes. Also kills them on contact. Effective for hours.

ACCEPTED
APR 25 1975
Under the Federal Insecticide, Fungicide, and Rodenticide Act, as amended. For information requested, call EPA Reg. No. 270-99



CAUTION: Keep Out of Reach of Children
(See back panel for additional cautions)

NET CONTENTS: 32 OZ. (1 QUART)

WIPE PLUS Fly Protectant is specially formulated for use on valued race horses and fine show horses, but will prove of equal value to pleasure riders seeking effective, long-lasting fly protection for their animals. Actually helps in the removal of dirt and dandruff. Imparts a high sheen to the hair when brushed out. And, it is pleasant to use. Has a light, bright, pleasing fragrance.

DIRECTIONS FOR USE SHAKE WELL BEFORE USING

Before application, brush animal to remove loose dust, dirt and debris. Moisten (don't soak) a folded piece of turkish toweling (approximately 12" x 15") with WIPE PLUS. Rub briskly against the growth of hair, giving special attention to shanks, legs, shoulders, neck and facial area of horse. Add more WIPE PLUS to toweling as needed to apply approximately two ounces daily, depending on size of animal. Then groom with a brush.

- To make sure the proper amount of WIPE PLUS is transferred to the animal, we recommend that the cloth used to apply the repellent be kept in an air tight container (such as a tin can) between periods of daily use. This will insure its moistness at the start of daily application.
- Repeated daily applications of WIPE PLUS may build up repellency on the animal. Thus its effectiveness may be increased, and gradually enable you to reduce the amount applied daily.
- Best application time is between 8 and 10 a.m. This gives you the best protection for the maximum period of time.
- Amount of repellent required to do an effective job will vary according to season, temperature, climate, humidity and cleanliness of animal.
- Use only turkish toweling or Farnam Applicator Mitt (not a substitute material) to apply WIPE PLUS.

CAUTION: Harmful if swallowed. If swallowed, call a physician. Do not induce vomiting. Avoid contact with eyes, mucous membranes, and skin. Avoid contamination of food. Avoid using excessive amounts of WIPE PLUS on your animals. Do not wet the hide. Do not reuse empty container. Destroy it by perforating or crushing. Bury or discard in a safe place away from water supplies.

This product is toxic to fish and birds. Keep out of lakes, streams or ponds. Do not contaminate water by cleaning of equipment, or disposal of wastes. Apply this product only as specified on this label.

ACTIVE INGREDIENTS: d-Trans chrysanthemum monocarboxylic acid ester of d-2-allyl-4-hydroxy-3-methyl-2-cyclopenten-1-one 0.160%; other isomers 0.018%; Piperonyl Butoxide Technical 0.798%; Di-n-Propyl Isocinchomeronate 0.998%; Oil of Citronella 2.000%; Butoxypolypropylene Glycol 20.00%.

INERT INGREDIENTS: 76.026%

Farnam Trademark for S-Bioallethrin
* Equivalent to 0.638% (Butylcarbitol) (6-propylpiperonyl) ether and 0.160% of related compounds

E.P.A. REG. NO. 270-99

E.P.A. EST. NO. 34734-IA-1

Manufactured exclusively for
FARNAM COMPANIES
Omaha, Nebraska 68112