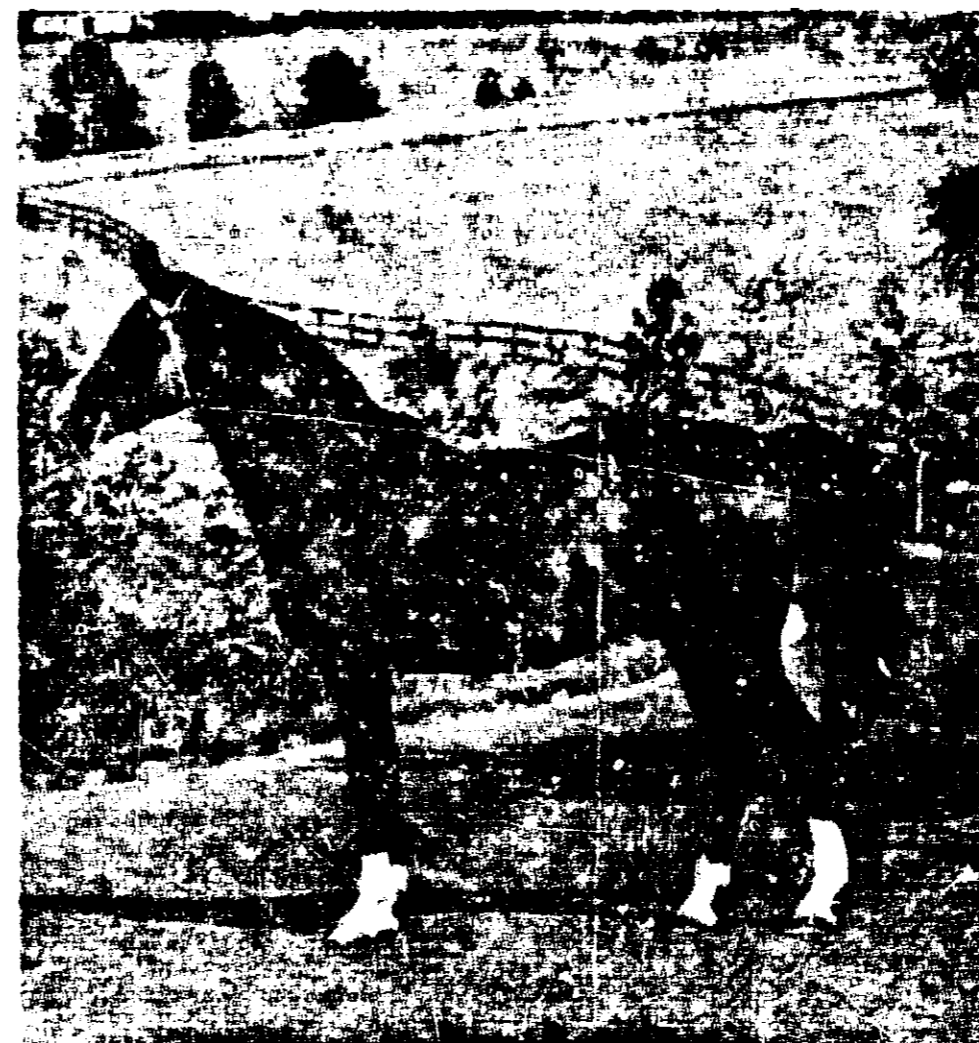


Also kills them on contact. Effective for hours!



Because of this, its effectiveness may be increased by the reduction in the amount of Wipe applied on the horse's coat.
 • To provide maximum effectiveness, the best time to apply Wipe is early morning.
 • Climatic conditions such as temperature and cleanliness of the horse's coat will affect the amount of Wipe required to do an effective job. Because of this, you may have to experiment with the amount of Wipe to arrive at the optimum amount needed.

CAUTIONS

- Harmful if swallowed. Keep out of reach of children. Wash hands thoroughly after using.
- Use only Turkish toweling or Wipe Applicator (or substitute material) to apply Wipe.
- Avoid using excessive amounts of Wipe on your horse's coat. Do not soak the skin.
- Do not store or pour near an open flame, or use near heat.
- Do not reuse empty container. Destroy it by crushing. Bury or discard in a safe place.
- Do not apply to horses to be used for food.

ACTIVE INGREDIENTS:

Pyrethrins 0.20%; Piperonyl Butoxide Technical (Equivalent to 0.40% (butylcarbityl) (6-Propylpiperonyl) of related compounds); Di-n-propyl Isocinchon Oil of Citronella 2.00%; Butoxypolypropylene

INERT INGREDIENTS: 76.30%

EPA EST. No. 34734-IA(1) EPA Reg. No. 100-100-01

16 FL. OZ. (1 PINT)

CAUTION: Keep Out of Reach of Children
 See Back Panel for Additional Cautions

Manufactured Exclusively For
FARNAM COMPANY
 Omaha, Nebraska U.S.A. 68102

PRINTED IN U.S.A.

7FF4

CUST.		DESIGN		NO. PROOFS	
ENG.	S.O.	SIZE 11 1/2 X 3 1/4 X 5 1/4 " F.C.E. 10. 134 X 6.000.	B.P. 64-201-21-A	DATE	
<p>READ BEFORE SIGNING: Customer agrees that (1) Continental Can Company, Inc. shall not be liable for (a) any error in the attached unless this proof is returned to Continental with such error plainly noted in writing, (b) the failure of any part of the attached to comply with any local, state or Federal law or regulation, (c) any part of the attached which infringes the property rights of others acquired, without limitation thereof, by usage, registration, copyright, letters patent or otherwise and (d) production colors not being exactly the same as the hand proved colors, if any, in the attached, although Continental will duplicate the colors as closely as possible; (2) Customer shall indemnify and hold Continental harmless against the liability described in (1) above, including attorney fees and court costs or for consequential damages; and (3) the liability of Continental for uncorrected errors plainly noted in the attached shall not exceed the actual cost of the containers bearing the noted error.</p>					
CHANGE AS DETAILED	<input type="checkbox"/>	APPROVED AS SUBMITTED	<input type="checkbox"/>	CUSTOMER SIGNATURE:	DATE
				CHANGE A	
				CHANGE B	
				CHANGE C	

[270-37]

Cameraman's Note
Poor Copy

01574

FARNAM

WIPE

FLY PROTECTANT

KILLS TICKS TOO!

(After long-standing non-use, mix contents by inverting several times)

(After long-standing non-use, mix contents by inverting several times)

Just wipe it on Horse and Ponies. Repels Horse flies, House flies, Stable flies, Deer flies, Gnats and Mosquitos. Also kills them on contact. Effective for hours!



16 FL. OZ. (1 PINT)

CAUTION: Keep Out of Reach of Children
See Back Panel for Additional Cautions

WIPE Fly Protectant is specially formulated for use on colored race horses and fine show horses, but will prove of equal value to pleasure riders seeking effective, long-lasting fly protection for their animals. Actually helps in the removal of dirt and dandruff. Imparts a high sheen to the hair when brushed out. And, it is pleasant to use. Has a light, bright, pleasing fragrance.

DIRECTIONS FOR USE: SHAKE WELL BEFORE USING

Before applying Wipe to your horse/brush him down thoroughly to remove loose dust and dirt.

Moisten (but do not soak) a folded piece of Turkish toweling (approximately 12" x 15") or an Applicator Mitt with Wipe. Rub briskly against the growth direction of the hair. Give special attention to the shanks, legs, shoulders, neck and facial areas of the horse where flies tend to cause the greatest problems. Add more Wipe to the applicator as needed, applying approximately one to two ounces for the total application on a daily basis (the variance will depend on the size of the horse). Groom with a brush.

To kill attached ticks, dab Wipe directly on the tick with a saturated cloth.

A FEW IMPORTANT POINTS TO REMEMBER:

- In order to keep the applicator moist and insure proper coverage of Wipe it is recommended that the cloth used be kept in an airtight container (a tin can will do) between uses.
- Regular daily applications of Wipe may build up repellency. Because of this, its effectiveness may be increased enabling a reduction in the amount of Wipe applied on a daily basis.
- To provide maximum effectiveness, the best time for application is early morning.
- Climatic conditions such as temperature and humidity and cleanliness of the horse's coat will affect the amount of repellent required to do an effective job. Because of this, you may have to experiment with the amount of Wipe applied in order to arrive at the optimum amount needed.

CAUTIONS

- Harmful if swallowed. Keep out of reach of children. Wash hands thoroughly after using.
- Use only Turkish toweling or Wipe Applicator Mitt (not a substitute material) to apply Wipe.
- Avoid using excessive amounts of Wipe on your horse. Do not soak the skin.
- Do not store or pour near an open flame, or use while smoking.
- Do not reuse empty container. Destroy it by perforating or crushing. Bury or discard in a safe place away from water supplies.
- Do not apply to horses to be used for food.

ACTIVE INGREDIENTS:

Pyrethrins 0.20%, Piperonyl Butoxide Technical 0.50% (Equivalent to 0.40% butylcarbitol, 6 Propylpiperonyl ether and 10% of related compounds), Di-n-propyl isocinchomeronate 1.00%, Oil of Citronella 2.00%, Butoxypropylene Glycol 20.00%

INERT INGREDIENTS: 76.30%

EPA EST. No. 34734-1A1 EPA Reg. No. 270-37A

Manufactured Exclusively For
FARNAM COMPANIES
Omaha, Nebraska U.S.A. 68112
PRINTED IN U.S.A.

A
United States Pesticide Act,
on the use of pesticide
reg. No. 270-37A

CUST.	DESIGN		NO. PROOFS	ARTIST
ENG.	S.O.	SIZE 11 1/2 X 3 1/4 X 5 1/4 C.E. 10.134 X 6.000 B.P. 54-201-21-A	PROOF DATE	
READ BEFORE SIGNING: Customer agrees that (1) Continental Can Company, Inc. shall not be liable for (a) any error in the attached unless this proof is returned to Continental with such error plainly noted in writing, (b) the failure of any part of the attached to comply with any local, state or Federal law or regulation, (c) any part of the attached which infringes the property rights of others acquired, without limitation thereof, by usage, registration, copyright, letters patent or otherwise and (d) production colors not being exactly the same as the hand proved colors, if any, in the attached, although Continental will duplicate the colors as closely as possible. (2) Customer shall indemnify and hold Continental harmless against the liability described in (1) above, including attorney fees and court costs or for consequential damages, and (3) the liability of Continental for uncorrected errors plainly noted in the attached shall not exceed the actual cost of the containers bearing the noted error.			CHANGE A	
CHANGE AS DETAILED <input type="checkbox"/>	APPROVED AS SUBMITTED <input type="checkbox"/>	CUSTOMER SIGNATURE:	CHANGE B	
		DATE	CHANGE C	

WIPE Fly Protectant is specially formulated for use on valued race horses and fine show horses, but will prove of equal value to pleasure riders seeking effective, long-lasting fly protection for their animals. Actually helps in the removal of dirt and dandruff. Imparts a high sheen to the hair when brushed out. And, it is pleasant to use. Has a light, bright, pleasing fragrance.

DIRECTIONS FOR USE: SHAKE WELL BEFORE USING

Before applying Wipe to your horse, brush him down thoroughly to remove loose dust and dirt.

Moisten (but do not soak) a folded piece of Turkish toweling (approximately 12" x 15") or an Applicator Mitt with Wipe. Rub briskly against the growth direction of the hair. Give special attention to the shanks, legs, shoulders, neck and facial areas of the horse where flies tend to cause the greatest problems. Add more Wipe to the applicator as needed, applying approximately one to two ounces for the total application on a daily basis (the variance will depend on the size of the horse). Groom with a brush.

To kill attached ticks, dab Wipe directly on the tick with a saturated cloth.

A FEW IMPORTANT POINTS TO REMEMBER:

- In order to keep the applicator moist and insure proper coverage of Wipe it is recommended that the cloth used be kept in an airtight container (a tin can will do) between uses.
- Regular daily applications of Wipe may build up repellency. Because of this, its effectiveness may be increased enabling a reduction in the amount of Wipe applied on a daily basis.
- To provide maximum effectiveness, the best time for application is early morning.
- Climatic conditions such as temperature and humidity, and cleanliness of the horse's coat will affect the amount of repellent required to do an effective job. Because of this, you may have to experiment with the amount of Wipe applied in order to arrive at the optimum amount needed.

CAUTIONS

- Harmful if swallowed. Keep out of reach of children. Wash hands thoroughly after using.
- Use only Turkish toweling or Wipe Applicator Mitt (not a substitute material) to apply Wipe.
- Avoid using excessive amounts of Wipe on your horse. Do not soak the skin.
- Do not store or pour near an open flame, or use while smoking.
- Do not reuse empty container. Destroy it by perforating or crushing. Bury or discard in a safe place away from water supplies.
- Do not apply to horses to be used for food.

ACTIVE INGREDIENTS:

Pyrethrins 0.20%; Piperonyl Butoxide Technical 0.50% (Equivalent to 0.40% (butylcarbityl) (6-Propylpiperonyl) ether and .10% of related compounds); Di-n-propyl Isocinchomeronate 1.00%; Oil of Citronella 2.00%; Butoxypolypropylene Glycol 20.00%

INERT INGREDIENTS: 76.30%

EPA EST. No. 34734-IA-1 EPA Reg. No. 270-37AA

Manufactured Exclusively For
FARNAM COMPANIES
Omaha, Nebraska U.S.A. 68112

PRINTED IN U.S.A.

71F4

(After long-standing non-use, mix contents by inverting several times)

