



ACCEPTED
RECORDED

**PRECAUTIONARY STATEMENTS
HAZARDS TO HUMANS
AND DOMESTIC ANIMALS**

DANGER: Highly corrosive. Causes skin and eye damage. May be fatal if swallowed. Do not get in eyes, on skin or on clothing. Wear goggles or face shield and rubber gloves when handling. Irritating to nose and throat. Avoid breathing dust. Remove and wash contaminated clothing before reuse.

ENVIRONMENTAL HAZARDS: This product is toxic to fish. Do not discharge into lakes, streams, ponds, or public waters unless in accordance with NPDES Permit. For guidance, contact the regional office of EPA.

PHYSICAL AND CHEMICAL HAZARDS: STRONG OXIDIZING AGENT. MIX ONLY WITH WATER. USE CLEAN DRY UTENSILS. Do not add this product to any dispensing device containing remnants of any other product. Such use may cause violent reaction leading to fire or explosion. CONTAMINATION WITH MOISTURE, ACIDS, ORGANIC MATTER, OTHER CHEMICALS MAY START A CHEMICAL REACTION WITH GENERATION OF HEAT, LIBERATION OF HAZARDOUS GASES, AND POSSIBLE GENERATION OF FIRE AND EXPLOSION. In case of contamination or decomposition, do not reseal container. If possible, isolate container in open air or well ventilated area. Flood with large volumes of water, if necessary.

E.P.A. Reg. No. 286-36

PACKAGED BY

**KEEP OUT OF REACH OF CHILDREN
DANGER**

PRACTICAL TREATMENT: (FIRST AID) If swallowed, feed bread soaked in milk followed by olive oil or cooking oil. Call a physician immediately.

If on skin: Brush off excess chemical and flush skin with cold water for at least 15 minutes. If irritation persists, get medical attention.

If in Eyes: Flush with cold water for at least 15 minutes. Get medical attention.

STORAGE AND DISPOSAL: Keep product dry in tightly closed container when not in use. Store in a cool, dry, well-ventilated area away from heat or open flame. In case of decomposition, isolate container, if possible, and flood large amounts of water to dissolve all material before discarding. Place in trash collection or dispose in approved landfill area, or bury in a safe place.

DIRECTIONS FOR USE:

It is a violation of federal law to use the product in a manner inconsistent with its labeling.

Calcium Hypochlorite contains 65% available chlorine. It provides a rapid source of chlorine needed to protect pools against the growth

E.P.A. Est. No. 286-AZ-1



A DIVISION OF

HILL BROTHERS CHEMICAL COMPANY

PHOENIX • TUCSON • CITY OF INDUSTRY • LOS ANGELES • SAN DIEGO • SAN JOSE

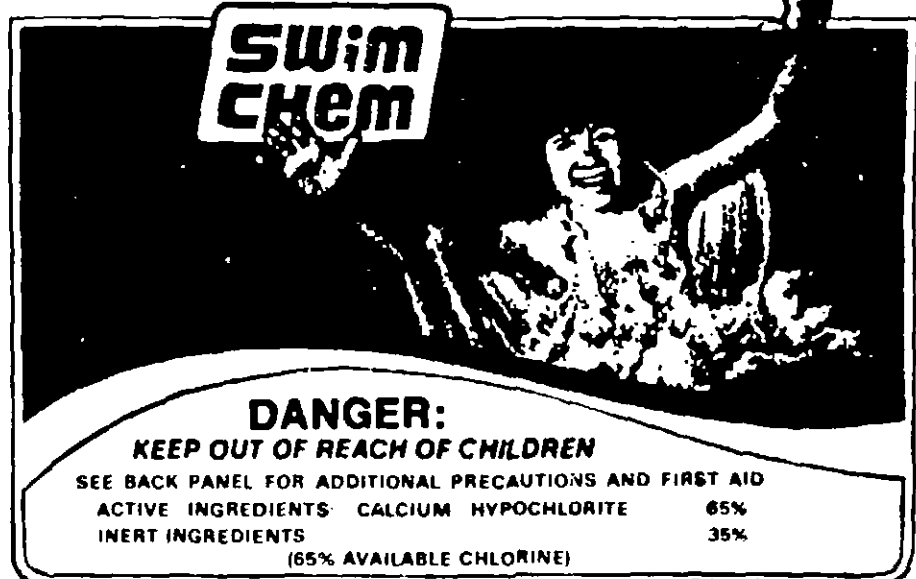
of bacteria and algae. For effective pool sanitation, maintain a free chlorine residual of 0.6 to 1.0 parts per million (ppm) or the amount required by local regulation. Free chlorine residual is determined by a test kit which may be obtained from your swimming pool dealer.

HOW TO APPLY CALCIUM HYPOCHLORITE: Calcium Hypochlorite may be added to the pool by broadcasting the dry granules over the pool water surface when unoccupied, or better, it may be added as a stock solution (described below) distributed over the surface from a plastic sprinkling can. The term stock solution in these directions refers to a solution containing 1% available chlorine. It can be prepared by dissolving two ounces (3 1/2 tablespoons) of Calcium Hypochlorite per gallon of water. Use a plastic or other nonmetallic vessel in preparing and storing solution. Allow the mixture to settle and use the clear solution for treatment.

TREATING NEWLY FILLED POOLS: Before use, treat the pool water with 10 ounces of Calcium Hypochlorite or 5 gallons of stock solution per 10,000 gallons of water. After 30 minutes, test free chlorine residual with test kit. If no residual is found, repeat the treatment. If a free chlorine residual exists but is below 0.6 ppm, add 1.2 ounces of Calcium Hypochlorite or 2 1/2 quarts of stock solution for 10,000 gallons of water. Final free chlorine residual should be 0.6 to 1.0 ppm or the amount required by local regulations.

REGULAR TREATMENT FOR POOLS IN USE: The total quantity of Calcium Hypochlorite needed to maintain the proper free chlorine residual varies with temperature, sunlight, bathing load, airborne contaminants, and other factors. Therefore, treatment should be based on free chlorine residual as determined by test kit.

CALCIUM HYPOCHLORITE GRANULAR



NET WT. 5 LB. (2.27 kg)

of bacteria or algae. For effective pool sanitation maintain a free chlorine residual of 0.6 to 1.0 parts per million (ppm) or the amount required by local regulation. Free chlorine residual is determined by a test kit which may be obtained from your swimming pool dealer.

HOW TO APPLY CALCIUM HYPOCHLORITE Calcium Hypochlorite may be added to the pool by broadcasting the dry granules over the pool water surface when unoccupied, or better, it may be added as a stock solution (described below) distributed over the surface from a plastic sprinkling can. The term stock solution in these directions refers to a solution containing 1% available chlorine. It can be prepared by dissolving two ounces (2 1/2 tablespoons) of Calcium Hypochlorite per gallon of water. Use a plastic or other nonmetallic vessel in preparing and storing solution. Allow the mixture to settle and use the clear solution for treatment.

TREATING NEWLY FILLED POOLS Before use, treat the pool water with 10 ounces of Calcium Hypochlorite or 5 gallons of stock solution per 10,000 gallons of water. After 30 minutes, test free chlorine residual with test kit. If no residual is found, repeat the treatment. If a free chlorine residual exists but is below 0.6 ppm, add 1/2 ounce of Calcium Hypochlorite or 2 1/2 quarts of stock solution for 10,000 gallons of water. Final free chlorine residual should be 0.6 to 1.0 ppm or the amount required by local regulations.

REGULAR TREATMENT FOR POOLS IN USE The total quantity of Calcium Hypochlorite needed to maintain the proper free chlorine residual varies with temperature, sunlight, bathing load, airborne contaminants and other factors. Therefore treatment should be based on free chlorine residual as determined by test kit.

CHILDREN

If swallowed
or ingested, do not induce vomiting and flush skin with water. If irritation persists, get medical attention.

and flush skin with water. If irritation persists, get medical attention.

Wait 15 minutes. Get medical attention.

Product dry in tightly sealed container in a cool, dry, well-ventilated area. In case of fire, use dry chemical extinguisher. If possible, flood area with water. Dispose of material in approved manner.

USE:

Use product in a manner consistent with the label.

Chlorine It provides a disinfectant against the growth of bacteria and algae.

ERS CHEMICAL COMPANY

INDUSTRY • LOS ANGELES • SAN DIEGO • SAN JOSE