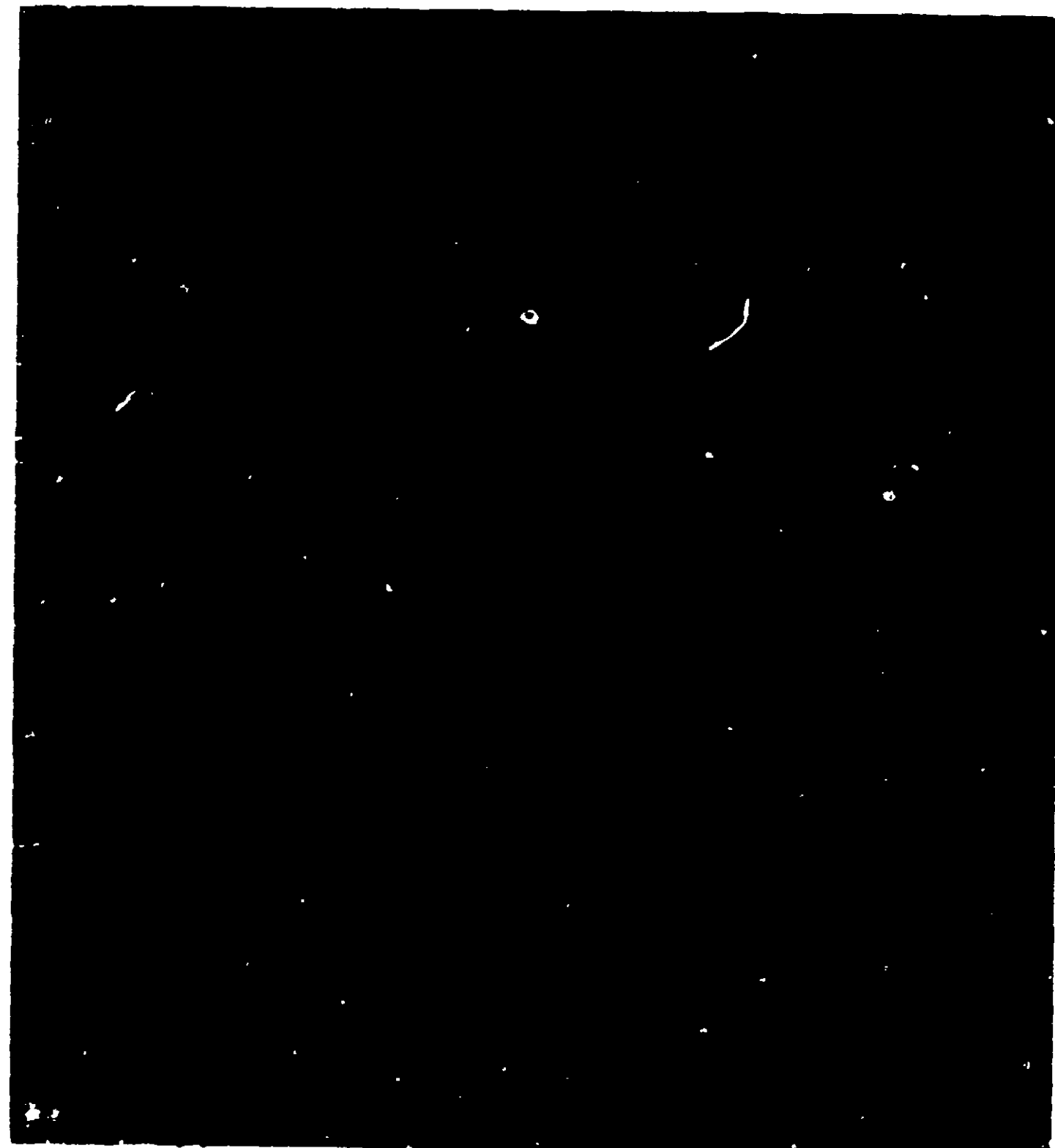




Net Contents
1 Gallon

BALANCE



ACCEPTED
[Faint, illegible text]

Manufactured Only by **MOKAN**
missouri • kansas chemical co.
1708-16 CAMPBELL STREET • KANSAS CITY, MISSOURI 64108

ACCEPTED
[Faint, illegible text]

BALANCE

DISINFECTANT AND CLEANER

Active Ingredients	35.5%
Isopropanol	20.0%
Triethanolamine dodecyl benzene sulfonate	4.5%
Soap	3.5%
o-benzyl-p-chlorophenol	3.0%
o-phenylphenol	3.0%
Para-Tertiary-Amylphenol	1.5%
Inert Ingredients	64.5%

EPA EST. 259-MO-1

EPA Registration No. 259-52

DANGER: **KEEP OUT OF REACH OF CHILDREN**

Causes eye damage and skin irritation. Do not get in eyes, on skin or on clothing. Protect eyes and skin when handling. Harmful if swallowed. Avoid contamination of food.

FIRST AID:

In case of contact, immediately flush eyes or skin with plenty of water for at least 15 minutes. For eyes, call a physician. Remove and wash contaminated clothing before reuse.

If swallowed, drink promptly a large quantity of milk, egg whites, gelatin solution or if these are not available, drink large quantities of water. Call a physician immediately.

Rinse empty container thoroughly with water and discard it. Do not use, pour, spill or store near heat or open flame.

GENERAL DISINFECTING

For hospitals, schools, nursing homes, offices, motels and other institutional use. To disinfect and clean floors, walls, tables, counters, bed frames, window and door ledges, venetian blinds, desks, telephones, toilet seats and bathroom fixtures, use one part of this disinfectant cleaner to 40 parts water. Apply to surfaces with mop, sponge, cloth or automatic scrubbing machine.

Oct 9 1974