

P111-5

241 341

141

5 3/4"

1/2"

# PENDULUM®



**FOR CONTROL OF MOST ANNUAL GRASSES AND CERTAIN BROADLEAF WEEDS IN NONCROP AND AREAS ESTABLISHED ORNAMENTALS IN NONCROP AND AREAS ONLY AND CHRISTMAS TREE PLANTATIONS**

**ACTIVE INGREDIENT:**  
pendimethalin, N-(1-ethylpropyl)-3,4-dimethyl-2,6-dinitrobenzamide 37.4%  
**INERT INGREDIENTS:** 62.6%  
**TOTAL:** 100.0%

EPA Reg. No. 241-341

(1 gallon contains 3.3 lbs. of pendimethalin)  
\*Contains Petroleum Distillates

EPA Est. No. 241-MO-1

**KEEP OUT OF REACH OF CHILDREN  
CAUTION/¡PRECAUCION!**

Si usted no entiende la etiqueta, busque a alguien para que se la explique a usted en detalle. (If you do not understand this label, find someone to explain it to you in detail.)

In case of an emergency endangering life or property involving this product, call collect, day or night, Area Code 201-835-3100.

### FIRST AID

**If in eyes:** Hold eyelids open and flush with steady, gentle stream of water for 15 minutes. Call a physician if eye irritation persists.  
**If swallowed:** DO NOT induce vomiting. Call a physician or Poison Control Center immediately.

**For skin contact:** Wash thoroughly with soap and water. Call a physician if skin irritation persists.  
**NOTE TO PHYSICIAN:** Because of increased risk of chemical pneumonia or pulmonary edema caused by aspiration of the hydrocarbon solvent, vomiting should be induced only under professional supervision.

See next page for Additional Precautionary Statements.



**Net Contents: 2.5 Gallons**  
© Registered Trademark of American Cyanamid Company

**22931-65**  
4/94 NTEG

**BEST COPY AVAILABLE**

### Front Cover

**FRONT PANEL PRINTING INFORMATION**  
PENDULUM LOGO: "PEND" THE BAND BELOW PENDULUM AND © PRINT BLACK. "UM" PRINTS PMS 102 YELLOW WITH BLACK OUTLINE. THE GRAPHIC RUNNING THROUGH THE LOWER CASE "U" IN PENDULUM PRINTS PMS 375 GREEN.  
TOP BAND PRINTS PMS102 YELLOW. "www.cyanamid.com" AND "3.3 EC" PRINT BLACK.  
BOTTOM PANEL PRINTS PMS375 GREEN WITH 10% BLEED ON LEFT AND BOTTOM AND 15% BLEED ON RIGHT. ALL COPY AND LINE ART WITHIN PANEL GIVE RESIST BLACK.  
PILLS AND PEELER WITH ART PRINT BLACK.  
SIZE: PRINT SYSTEM 2.5 GALLON 4 PANEL ECL 15113 12 BA  
PRINT METHOD

**ACCEPTED**  
MAR 1994  
Under the Federal Insecticide, Fungicide, and Rodenticide Act  
EPA Reg. No. 241-341

19815

**PRECAUTIONARY STATEMENTS  
HAZARDS TO HUMANS  
(AND DOMESTIC ANIMALS)**

# CAUTION

Causes moderate eye irritation. Harmful if swallowed or absorbed through the skin. Avoid contact with skin, eyes or clothing. Use with adequate ventilation.

**Personal Protective Equipment (PPE):** Some material that are chemical-resistant to this product are listed below. If you want more options, follow the instructions for Category G on an EPA chemical resistance category selection chart.

Applicators and other handlers must wear:

- Long-sleeved shirt and long pants
- Chemical-resistant gloves, such as barrier laminate or viton ( $\geq 14$  mils)
- Shoes plus socks

Follow manufacturer's instructions for cleaning and maintaining PPE. If no such instructions for washables, use detergent and hot water. Keep and wash PPE separately from other laundry.

### User Safety Recommendations

Users should:

- Wash hands before eating, drinking, chewing gum, using tobacco, or using the toilet.
- Remove clothing immediately if pesticide gets inside. Then wash thoroughly and put on clean clothing.

### ENVIRONMENTAL HAZARDS

This product is toxic to fish. DO NOT apply directly to water, to areas where surface water is present, or to intertidal areas below the mean high water mark. Drift and runoff from treated areas may be hazardous to aquatic organisms in adjacent aquatic sites. DO NOT contaminate water when disposing of equipment washwaters.

### DIRECTIONS FOR USE

It is a violation of Federal law to use this product in a manner inconsistent with its labeling. This labeling must be in the possession of the user at time of herbicide application. DO NOT apply this product through any type of irrigation system.

DO NOT apply this product in a way that will contact workers or other persons, either directly or through drift. Only protected handlers may be in the area during application. For any requirements specific to your State or Tribe, consult the agency responsible for pesticide regulation.

### AGRICULTURAL USE REQUIREMENTS

Use this product only in accordance with its labeling and with the Worker Protection Standard, 40 CFR part 170. This Standard contains requirements for the protection of agricultural workers on farms, forests, nurseries, and greenhouses, and handlers of agricultural pesticides. It contains requirements for training, decontamination, notification, and emergency assistance. It also contains specific instructions and exceptions pertaining to the statements on this label about personal protective equipment (PPE), and restricted-entry interval. The requirements in this box only apply to uses of this product that are covered by the Worker Protection Standard.

Do not enter or allow worker entry into treated areas during the restricted entry interval (REI) of 12 hours.

PPE required for early entry to treated areas that is permitted under the Worker Protection Standard and that involves contact with anything that has been treated, such as plants, soil, or water, is:

- Coveralls
- Chemical-resistant gloves, such as barrier laminate or viton ( $\geq 14$  mils)
- Shoes plus socks

### DISCLAIMER

The label instructions for use of this product reflect the opinion of experts based on field use and tests. The directions are believed to be reliable and should be followed carefully. However, it is impossible to eliminate all risks inherently associated with use of this product. Crop injury, ineffectiveness or other unintended consequences may result because of such factors as weather conditions, presence of other materials, or the use or application of the product contrary to label instructions, all of which are beyond the control of American Cyanamid Company. All such risks shall be assumed by the user.

American Cyanamid Company warrants only that the material contained herein conforms to the chemical description on the label and is reasonably fit for the use therein described when used in accordance with the directions for use, subject to the risk referred to above.

#### INTERIOR PRINTING INFORMATION

- ALL COPY AND LINE ART PRINT IN BLACK
- SIZE: INPRINT SYSTEMS 2.5 GALLON 4 PANEL ECL PLOT 6.12" W
- PRINT METHOD:



Any damages arising from a breach of this warranty shall be limited to direct damages and shall not include consequential commercial damages such as loss of profits or values or any other special or indirect damages.

American Cyanamid Company makes no other express or implied warranty, including other express or implied warranty of FITNESS or of MERCHANTABILITY.

### GENERAL INFORMATION

PENDULUM 3.3 EC Industrial Herbicide is recommended for preemergence control of grasses and certain broadleaf weed species as they germinate on noncropland areas and in established Christmas tree plantations. PENDULUM 3.3 EC Industrial Herbicide treatments are most effective in controlling weeds when adequate rainfall is received within 30 days after application.

PENDULUM 3.3 EC Industrial Herbicide will not control established weeds. Therefore, areas to be treated should be free of established weeds at the time of treatment, or PENDULUM 3.3 EC Industrial Herbicide may be used in conjunction with herbicides registered for postemergence use in noncropland areas and in established Christmas tree plantations. Consult the labels of those herbicides for suggested treatments, rates to be used and precautions or restrictions for use in noncropland areas.

### STORAGE AND DISPOSAL

**STORAGE:** DO NOT STORE BELOW 40°F. Extended storage at temperatures below 40°F can result in the formation of crystals on the bottom of container. If crystallization does occur, store the container on its side at room temperature (70°F) and rock occasionally until crystals redissolve.

DO NOT contaminate water, food, or feed by storage or disposal.

**PESTICIDE DISPOSAL:** Pesticide wastes are toxic. Improper disposal of excess pesticide, spray mixture, or rinsate is a violation of Federal law. If these wastes cannot be disposed of by use according to label instructions, contact your State Pesticide or Environmental Control Agency, or the Hazardous Waste representative at the nearest EPA Regional Office for guidance.

**CONTAINER DISPOSAL:** Triple rinse (or equivalent). Then offer for recycling or reconditioning, or puncture and dispose of in a sanitary landfill, by incineration, or, if allowed by state and local authorities, by burning. If burned, stay out of smoke.

Observe all cautions and limitations in this label and the labels of products used in combination with PENDULUM 3.3 EC Industrial Herbicide. The use of PENDULUM 3.3 EC Industrial Herbicide not consistent with this label can result in injury to crops, animals, or persons. Keep containers closed to avoid spills and contamination.

### MIXING INSTRUCTIONS

1. Fill tank one-half to three-quarters full with clean water.
2. Add PENDULUM 3.3 EC Industrial Herbicide to the partially filled tank while agitating and then fill the remainder of the tank with water.
3. MAINTAIN CONTINUOUS AGITATION WHILE ADDING PENDULUM 3.3 EC INDUSTRIAL HERBICIDE AND UNTIL SPRAYING IS COMPLETED. If the spray mixture is allowed to settle for any period of time, thorough agitation is essential to resuspend the mixture before spraying is resumed. Continue agitation while spraying.
4. If PENDULUM 3.3 EC Industrial Herbicide is to be used in tank mixtures with other registered herbicides, then follow directions on the labels of those products which recommend tank mixing.

### SPRAYING INSTRUCTIONS

Uniformly apply with properly calibrated ground equipment in sufficient water per acre to uniformly treat the area with a spray pressure of 25 to 50 psi. Maintain continuous agitation during spraying with good mechanical or bypass agitation.

PENDULUM 3.3 EC Industrial Herbicide treatments in noncropland areas and in Christmas tree plantations are most effective in controlling weeds when adequate rainfall is received within 30 days after application.

Avoid contact of spray solution with driveways, stone, wood, or other porous surfaces. Rinse immediately to avoid staining.

### NONCROPLAND WEED CONTROL

PENDULUM 3.3 EC Industrial Herbicide is recommended for preemergence control of most annual grasses and certain broadleaf weeds as they germinate on noncropland areas such as railroad, utility, highway, and pipeline rights-of-way; highway guardrails, delineators, and sign posts, utility substations, petroleum tank farms, pumping installations, fence rows, storage areas, windbreaks and shelterbelts; and other similar areas.

7 1/16"

INTERIOR PRINTING INFORMATION  
 ALL COPY AND LINE ART PRINT BLACK  
 SIZE: INPRINT SYSTEM 2.5 GALLON 4 PANEL ECL PLOT 612/88  
 PRINT METHOD

For postemergence control of weeds, tank-mix combinations of PENDULUM 3.3 EC Industrial Herbicide plus ARSENAL® herbicide are recommended. DO NOT tank mix with ARSENAL in California. Recommended rates for the tank-mix compounds should be determined from the product labels of both PENDULUM 3.3 EC Industrial Herbicide and ARSENAL prior to use.

### WEED CONTROL IN AND AROUND ORNAMENTAL PLANTINGS

PENDULUM 3.3 EC Industrial Herbicide is recommended for use on the following established ornamentals and ground covers planted in noncropland areas such as highway rights-of-way, utility substations, or similar areas. Care must be taken that soil or planting mixes have settled firmly following transplanting and that there are no cracks that would allow direct contact of PENDULUM 3.3 EC Industrial Herbicide and roots. Directed sprays where soil and media surfaces are uniformly covered will result in best weed control and ornamental tolerance. PENDULUM 3.3 EC Industrial Herbicide sprays can be safely applied over-the-top of those plants listed below.

#### ESTABLISHED ORNAMENTALS

Common Name	Scientific Name
Azalea 'Coral Bells'	<i>Rhododendron</i>
Bamboo, Heavenly	<i>Nandina domestica</i>
Birch, River	<i>Betula nigra</i>
Bottle Brush	<i>Callistemon citrinus</i>
Boxwood, Common	<i>Buxus sempervirens</i>
Bush Honeysuckle	<i>Diervilla lonicera</i>
Common Oleander	<i>Nerium oleander</i>
Dogwood	<i>Cornus cardinal</i>
European Fan Palm	<i>Chamaerops humilis</i>
Fir, Balsam	<i>Abies balsamea</i>
Firethorn	<i>Pyracantha coccinea</i>
Holly, Dwarf Burfordi	<i>Ilex cornutana</i>
Holly, Japanese Compacta	<i>Ilex crenata compacta</i>
Holly 'Savannah'	<i>Ilex attenuata</i>
Hosta	<i>Hosta lancifolia</i>
Juniper, Andorra	<i>Juniperus horizontalis plumosa</i>

® Registered Trademark of American Cyanamid Company

3

Common Name	Scientific Name
Juniper 'Pfitzer'	<i>Juniperus chinensis</i>
Juniper 'Sea Green'	<i>Juniperus chinensis media</i>
Juniper 'Blue Chip'	<i>Juniperus horizontalis</i>
Juniper, Savins 'Broadmoor'	<i>Juniperus sabina</i>
Liriope, Green	<i>Liriope spicata</i>
Liriope, 'Monroe White'	<i>Liriope musari</i>
Liriope, Variegated	<i>Liriope muscari 'Variegata'</i>
Maple, Red	<i>Acer rubrum</i>
Mondo Grass	<i>Ophiopogon japonicum</i>
Mountain Laurel	<i>Kalmia latifolia</i>
Natal Plum	<i>Carissa grandiflora</i>
Pittosporum	<i>Pittosporum tobira</i>
Privet, Japanese	<i>Ligustrum japonicum</i>
Spirea, Bridal Wreath	<i>Spirea vanhouttei</i>

#### GROUND COVER ORNAMENTALS

Common Name	Scientific Name
Capeweed	<i>Arctotheca calendula</i>
Daisy, Trailing African	<i>Osteospermum fruticosum</i>
Gazania	<i>Gazania splendens</i>
Rose-of-Sharon	<i>Hypericum calycinum</i>
Iceplant, Large Leaf	<i>Carpobrotus edule</i>
Ivy, English	<i>Helix hedera</i>
Ivy, Geranium	<i>Pelargonium peltatum</i>
Myoporum	<i>Myoporum parviflorum</i>
Pachysandra	<i>Pachysandra terminalis</i>
Potentilla	<i>Potentilla jackmanii</i>
Potentilla	<i>Potentilla verna</i>

#### PRECAUTION!

Apply only to established plantings.

#### WEED CONTROL IN CHRISTMAS TREE PLANTATIONS

PENDULUM 3.3 EC Industrial Herbicide is recommended for preemergence control of the weed species

INTERIOR PRINTING INFORMATION  
ALL COPY AND LINE ART PRINT BLACK  
SIZE: INKJET SYSTEMS 2.5 GALLON 4 PANEL ECL PLOT 5.1278  
PRINT METHOD:

listed on this label as they germinate in areas planted with the following Christmas trees:

Common Name	Scientific Name
*Austrian Pine	<i>Pinus nigra</i>
*Balsam Fir	<i>Abies balsamiae</i>
*Colorado Blue Spruce	<i>Picea pungens</i>
Douglas Fir	<i>Pseudotsuga menziesii</i>
*Scotch Pine	<i>Pinus sylvestris</i>
*Virginia Pine	<i>Pinus virginiana</i>
*White Fir	<i>Abies concolor</i>
*White Spruce	<i>Picea glauca</i>

\*Do not use in California.

DO NOT apply PENDULUM 3.3 EC Industrial Herbicide to Christmas tree seed or nursery beds. Apply PENDULUM 3.3 EC Industrial Herbicide only to established Christmas tree plantations. PENDULUM 3.3 EC Industrial Herbicide can be applied directly over the top of established Christmas trees.

PENDULUM 3.3 EC Industrial Herbicide will not control established weeds. Therefore, areas to be treated should be free of established weeds at the time of treatment, or PENDULUM 3.3 EC Industrial Herbicide may be used in conjunction with herbicides registered for postemergence use in Christmas trees. Consult the labels of those herbicides for suggested treatments, rates to be used and precautions or restrictions for use in Christmas trees.

### WEED SPECIES CONTROLLED

For preemergence control of the weed species listed, apply PENDULUM 3.3 EC Industrial Herbicide at the following rates

Length of Control	PENDULUM 3.3 EC Industrial Herbicide Rate
Short Term Control (2-4 months)	2.4 Quarts/Acre (1.8 fl oz /1000 sq ft)
Long Term Control (6-8 months)	4.8 Quarts/Acre (3.5 fl oz /1000 sq ft)

PENDULUM 3.3 EC Industrial Herbicide will not control established weeds

The efficacy of PENDULUM 3.3 EC Industrial Herbicide will be improved if the application is followed by one-half inch of rainfall or its equivalent in sprinkler irrigation

The following grass and broadleaf weeds are controlled by preemergence treatments of PENDULUM 3.3 EC Industrial Herbicide at the rates recommended:

### GRASSES CONTROLLED

Common Name	Scientific Name
Barnyardgrass	<i>Echinochloa crus-galli</i>
Bluegrass, Annual	<i>Poa annua</i>
Crabgrass	<i>Digitaria spp.</i>
Crowfootgrass	<i>Dactyloctenium aegyptium</i>
Foxtail, Giant	<i>Setaria faberi</i>
Foxtail, Green	<i>Setaria viridis</i>
Foxtail, Yellow	<i>Setaria lutescens</i>
Goosegrass	<i>Eleusine indica</i>
Itchgrass	<i>Rottboellia exaltata</i>
Johnsongrass (from seed)	<i>Sorghum halepense</i>
Junglerice	<i>Echinochloa colinum</i>
Lovegrass	<i>Eragrostis spp.</i>
Panicum, Browntop	<i>Panicum fasciculatum</i>
Panicum, Fall	<i>Panicum dichotomiflorum</i>
Panicum, Texas	<i>Panicum texanum</i>
Sandbur, Field	<i>Cenchrus incertus</i>
Signalgrass	<i>Brachiaria platyphylla</i>
Sprangletop, Mexican	<i>Leptochloa unnervia</i>
Sprangletop, Red	<i>Leptochloa filiformis</i>
Witchgrass	<i>Panicum capillare</i>
Woolly Cupgrass	<i>Eriochloa villosa</i>

7 1/16"

INTERIOR PRINTING INFORMATION  
 ALL COPY AND LINE ART PRINT BLACK  
 SIZE: HP PRINT SYSTEMS 2.5 GALLON 4 PANEL ECL PLOT 6/12/88  
 PRINT METHOD



## BROADLEAF WEEDS CONTROLLED

Common Name	Scientific Name	Common Name	Scientific Name
Carpetweed	<i>Mollugo verticillata</i>	Pigweed	<i>Amaranthus</i> spp.
Chickweed, Common	<i>Stellaria media</i>	Puncturevine	<i>Tribulus terrestris</i>
Chickweed, Mouseear	<i>Cerastium vulgatum</i>	Purslane	<i>Portulaca oleracea</i>
Clover, Hop	<i>Trifolium procumbens</i>	Pusley, Florida	<i>Richardia scabra</i>
Cudweed	<i>Gnaphalium</i> spp.	Rocket, London	<i>Sisymbrium irio</i>
Fiddleneck	<i>Amsinckia intermedia</i>	Sheperdspurse	<i>Capsella bursa-pastoris</i>
Filaree	<i>Erodium</i> spp.	Smartweed, Pennsylvania	<i>Polygonum pennsylvanicum</i>
Henbit	<i>Lamium amplexicaule</i>	Spurge, Annual	<i>Euphorbia</i> spp.
Knotweed (prostrate)	<i>Polygonum aviculare</i>	Spurge, Prostrate	<i>Euphorbia maculata</i>
Kochia	<i>Kochia scoparia</i>	Woodsorrel, Yellow	<i>Oxalis stricta</i>
Lambsquarters	<i>Chenopodium album</i>	Velvetleaf (Buttonweed)	<i>Abutilon theophrasti</i>

7 1/16"



**American Cyanamid Company**  
 Agricultural Products Division  
 Specialty Products Department  
 Wayne, NJ 07470 ©1994

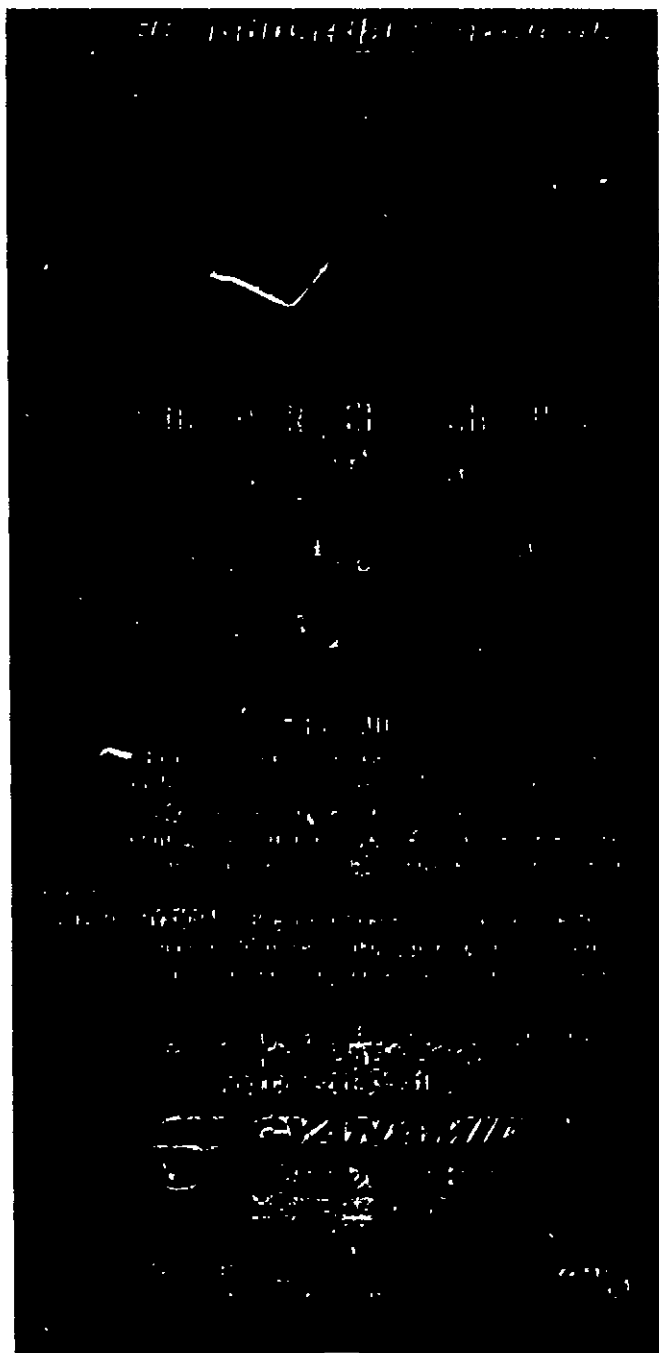
INTEG™ is protected by the following Patents: U.S.A. 4680080, 4592572, 4675062, Canada 422793, and others

5

INTERIOR PRINTING INFORMATION  
 ALL COPY AND LINE ART PRINT BLACK  
 SIZE: INPRINT SYSTEMS 2.5 GALLON 4 PANEL ECL PLOT 6/12/88  
 PRINT METHOD:

6

# PENDULUM



7 1/16"

## PRECAUTIONARY STATEMENTS HAZARDS TO HUMANS (AND DOMESTIC ANIMALS)

### CAUTION

Causes moderate eye irritation. Harmful if swallowed or absorbed through the skin. Avoid contact with skin, eyes or clothing. Use with adequate ventilation.

See leaflet for Worker Protection Standard (40 CFR 170) requirements.

### ENVIRONMENTAL HAZARDS

This product is toxic to fish. DO NOT apply directly to water, to areas where surface water is present, or to intertidal areas below the mean high water mark. Drift and runoff from treated areas may be hazardous to aquatic organisms in adjacent aquatic sites. DO NOT contaminate water when disposing of equipment washwaters.

### DIRECTIONS FOR USE

It is a violation of Federal law to use this product in a manner inconsistent with its labeling. DO NOT apply this product through any type of irrigation system.

See leaflet for complete Directions For Use.

### STORAGE AND DISPOSAL

**STORAGE:** DO NOT STORE BELOW 40°F. Extended storage at temperatures below 40°F can result in the formation of crystals on the bottom of container. If crystallization does occur, store the container on its side at room temperature (70°F) and rock occasionally until crystals redissolve.

DO NOT contaminate water, food, or feed by storage or disposal.

**PESTICIDE DISPOSAL:** Pesticide wastes are toxic. Improper disposal of excess pesticide, spray mixture, or rinsate is a violation of Federal law. If these wastes cannot be disposed of by use according to label instructions, contact your State Pesticide or Environmental Control Agency, or the Hazardous Waste representative at the nearest EPA Regional Office for guidance.

**CONTAINER DISPOSAL:** Triple rinse (or equivalent). Then offer for recycling or reconditioning, or puncture and dispose of in a sanitary landfill, by incineration or, if allowed by state and local authorities, by burning. If burned, stay out of smoke.

Observe all cautions and limitations in this label and the labels of products used in combination with PENDULUM 3.3 EC Industrial Herbicide. The use of PENDULUM 3.3 EC Industrial Herbicide not consistent with this label can result in injury to crops, animals, or persons. Keep containers closed to avoid spills and contamination.

See leaflet for Disclaimer.

### Attached Panel

#### BACK PANEL PRINTING INFORMATION

PENDULUM LOGO: "PEND" TOP BAND BELOW PENDULUM AND "UM" PRINT BLACK. "UM" PRINTS PMS 102 YELLOW WITH BLACK OUTLINE. THE GRAPHIC "HUMPING" THROUGH THE LOWER CASE "U" IN PENDULUM PRINTS PMS 375 GREEN.

TOP BAND PRINTS PMS 102 YELLOW. "INDUSTRIAL HERBICIDE" AND "3.3 EC" PRINT BLACK.

BOTTOM PANEL PRINTS PMS 375 GREEN WITH LINE BELOW BOTTOM. ALL COPY AND LINE ART WITHIN PANEL TO BE PRINT TO BLACK.

ALL REMAINING COPY PRINTS TO BLACK ENTIRE FRONT AND BACK PANELS.

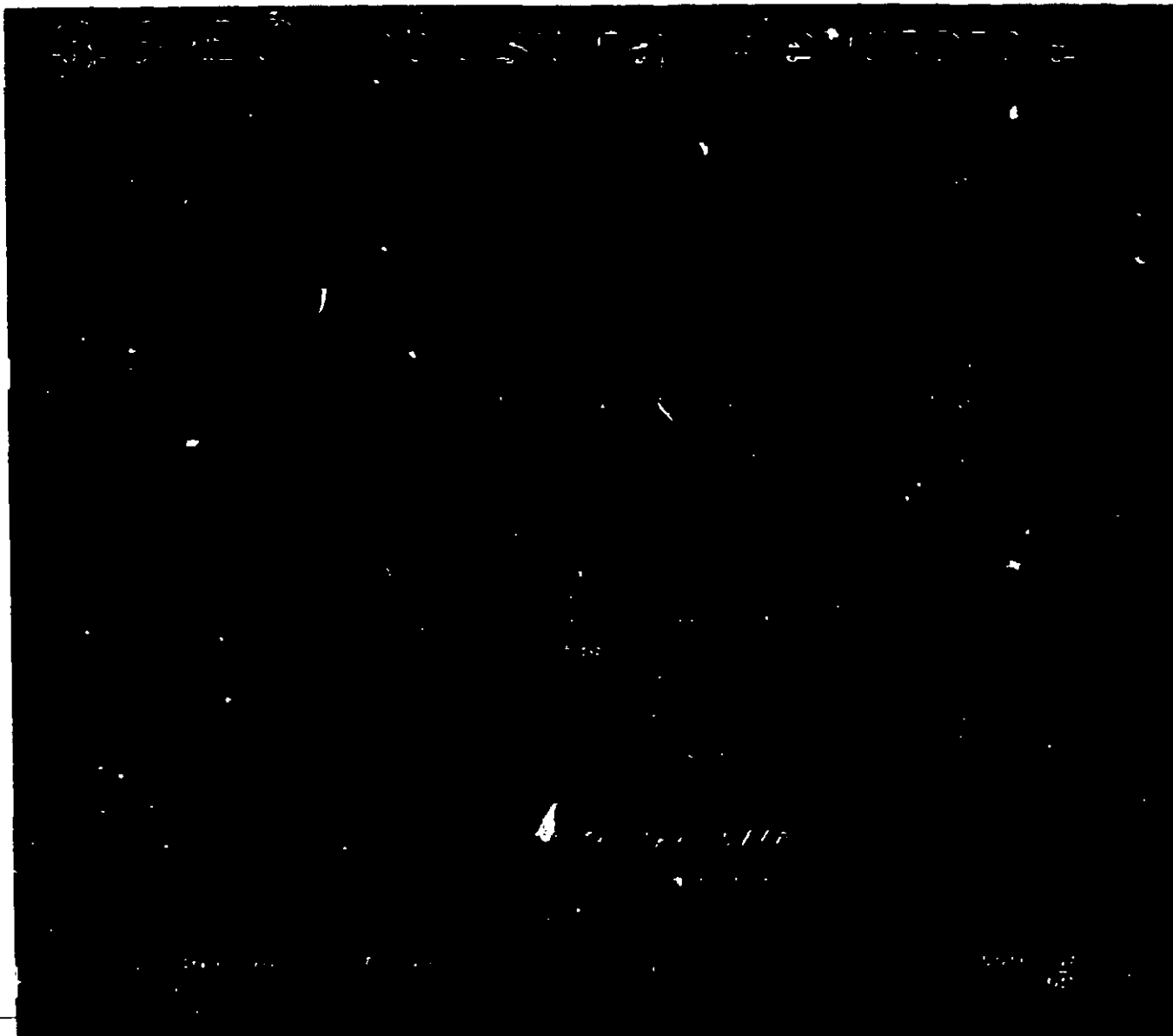
SIZE: 10.5" (H) X 12.5" (W) (ALL PANELS) FOR PENDULUM.

PRINT METHOD:

5 3/4"

1/2"

# PENDulum®



7 1/16"

### Front Cover

REPRO

241-341

**FRONT PANEL PRINTING INFORMATION:**  
 PENDULUM LOGO: "PEND" THE BAND BELOW PENDULUM AND @ PRINT BLACK "UM" PRINTS PMS 102 YELLOW WITH BLACK OUTLINE THE GRAPHIC RUNNING THROUGH THE LOWER CASE "L" IN PENDULUM PRINTS PMS 375 GREEN  
 TOP BAND PRINTS PMS 192 YELLOW "Industrial Herbicide" AND "3.3 EC" PRINT BLACK  
 BOTTOM PANEL PRINTS PMS 375 GREEN WITH 1/8" BLEED ON LEFT AND BOTTOM AND 1/16" BLEED ON RIGHT ALL COPY AND LINE ART WITHIN PANEL GIVE PRINT BLACK  
 INTEG AND PEELE DOWN ART PRINT BLACK  
 SIZE INPRINT SYSTEMS 2.5 GALLON 4 PANEL ECL PRINT 6/12 BA  
 PRINT METHOD

305 9326 (rev. 04/26/94)  
DATE 4/7/94 4:13

PENDULUM 3.3EC INDUSTRIAL HERBICIDE (WS)  
110 GALLON ECL & POUCH LABEL - CLIENT REVIEW - 2

Boa  
a\ph110ec.ch



**PRECAUTIONARY STATEMENTS  
HAZARDS TO HUMANS  
(AND DOMESTIC ANIMALS)**

**CAUTION**

Causes moderate eye irritation. Harmful if swallowed or absorbed through the skin. Avoid contact with skin, eyes or clothing. Use with adequate ventilation.

**Personal Protective Equipment (PPE):** Some material that are chemical-resistant to this product are listed below. If you want more options, follow the instructions for Category G on an EPA chemical resistance category selection chart.

Applicators and other handlers must wear:

- Long-sleeved shirt and long pants
- Chemical-resistant gloves, such as barrier laminate or viton ( $\geq 14$  mils)
- Shoes plus socks

Follow manufacturer's instructions for cleaning and maintaining PPE. If no such instructions for washables, use detergent and hot water. Keep and wash PPE separately from other laundry.

**User Safety Recommendations**

Users should:

- Wash hands before eating, drinking, chewing gum, using tobacco, or using the toilet.
- Remove clothing immediately if pesticide gets inside. Then wash thoroughly and put on clean clothing.

**ENVIRONMENTAL HAZARDS**

This product is toxic to fish. DO NOT apply directly to water, to areas where surface water is present, or to intertidal areas below the mean high water mark. Drift and runoff from treated areas may be hazardous to aquatic organisms in adjacent aquatic sites. DO NOT contaminate water when disposing of equipment washwaters.

**DIRECTIONS FOR USE**

It is a violation of Federal law to use this product in a manner inconsistent with its labeling. This labeling must be in the possession of the user at time of herbicide application. DO NOT apply this product through any type of irrigation system.

DO NOT apply this product in a way that will contact workers or other persons, either directly or through drift. Only protected handlers may be in the area during application. For any requirements specific to your State or Tribe, consult the agency responsible for pesticide regulation.

**AGRICULTURAL USE REQUIREMENTS**

Use this product only in accordance with its labeling and with the Worker Protection Standard, 40 CFR part 170. This Standard contains requirements for the protection of agricultural workers on farms, forests, nurseries, and greenhouses, and handlers of agricultural pesticides. It contains requirements for training, decontamination, notification, and emergency assistance. It also contains specific instructions and exceptions pertaining to the statements on this label about personal protective equipment (PPE), and restricted-entry interval. The requirements in this box only apply to uses of this product that are covered by the Worker Protection Standard.

Do not enter or allow worker entry into treated areas during the restricted entry interval (REI) of 12 hours.

PPE required for early entry to treated areas that is permitted under the Worker Protection Standard and that involves contact with anything that has been treated, such as plants, soil, or water, is:

- Coveralls
- Chemical-resistant gloves, such as barrier laminate or viton ( $\geq 14$  mils)
- Shoes plus socks

**DISCLAIMER**

The label instructions for use of this product reflect the opinion of experts based on field use and tests. The directions are believed to be reliable and should be followed carefully. However, it is impossible to eliminate all risks inherently associated with use of this product. Crop injury, ineffectiveness or other unintended consequences may result because of such factors as weather conditions, presence of other materials, or the use or application of the product contrary to label instructions, all of which are beyond the control of American Cyanamid Company. All such risks shall be assumed by the user.

American Cyanamid Company warrants only that the material contained herein conforms to the chemical description on the label and is reasonably fit for the use therein described when used in accordance with the directions for use, subject to the risk referred to above.

INTERIOR PRINTING INFORMATION  
ALL COPY AND LINE ART PRINT BLACK  
SIZE: INPRINT SYSTEMS 2.5 GALLON 4-PANEL ECL PLOT 6/12/98  
PRINT METHOD

Any damages arising from a breach of this warranty shall be limited to direct damages and shall not include consequential commercial damages such as loss of profits or values or any other special or indirect damages.

American Cyanamid Company makes no other express or implied warranty, including other express or implied warranty of FITNESS or of MERCHANTABILITY.

### GENERAL INFORMATION

PENDULUM 3.3 EC Industrial Herbicide is recommended for preemergence control of grasses and certain broadleaf weed species as they germinate on noncropland areas and in established Christmas tree plantations. PENDULUM 3.3 EC Industrial Herbicide treatments are most effective in controlling weeds when adequate rainfall is received within 30 days after application.

PENDULUM 3.3 EC Industrial Herbicide will not control established weeds. Therefore, areas to be treated should be free of established weeds at the time of treatment, or PENDULUM 3.3 EC Industrial Herbicide may be used in conjunction with herbicides registered for postemergence use in noncropland areas and in established Christmas tree plantations. Consult the labels of those herbicides for suggested treatments, rates to be used and precautions or restrictions for use in noncropland areas.

### STORAGE AND DISPOSAL

**STORAGE:** DO NOT STORE BELOW 40°F. Extended storage at temperatures below 40°F can result in the formation of crystals on the bottom of container. If crystallization does occur, store the container on its side at room temperature (70°F) and rock occasionally until crystals redissolve.

DO NOT contaminate water, food, or feed by storage or disposal.

**PESTICIDE DISPOSAL:** Pesticide wastes are toxic. Improper disposal of excess pesticide, spray mixture, or rinsate is a violation of Federal law. If these wastes cannot be disposed of by use according to label instructions, contact your State Pesticide or Environmental Control Agency, or the Hazardous Waste representative at the nearest EPA Regional Office for guidance.

**CONTAINER DISPOSAL:** Triple rinse (or equivalent). Then offer for recycling or reconditioning, or puncture and dispose of in a sanitary landfill, by incineration or, if allowed by state and local authorities, by burning. If burned, stay out of smoke.

Observe all cautions and limitations in this label and the labels of products used in combination with PENDULUM 3.3 EC Industrial Herbicide. The use of PENDULUM 3.3 EC Industrial Herbicide not consistent with this label can result in injury to crops, animals, or persons. Keep containers closed to avoid spills and contamination.

### MIXING INSTRUCTIONS

1. Fill tank one-half to three-quarters full with clean water.
2. Add PENDULUM 3.3 EC Industrial Herbicide to the partially filled tank while agitating and then fill the remainder of the tank with water.
3. MAINTAIN CONTINUOUS AGITATION WHILE ADDING PENDULUM 3.3 EC INDUSTRIAL HERBICIDE AND UNTIL SPRAYING IS COMPLETED. If the spray mixture is allowed to settle for any period of time, thorough agitation is essential to resuspend the mixture before spraying is resumed. Continue agitation while spraying.
4. If PENDULUM 3.3 EC Industrial Herbicide is to be used in tank mixtures with other registered herbicides, then follow directions on the labels of those products which recommend tank mixing.

### SPRAYING INSTRUCTIONS

Uniformly apply with properly calibrated ground equipment in sufficient water per acre to uniformly treat the area with a spray pressure of 25 to 50 psi. Maintain continuous agitation during spraying with good mechanical or bypass agitation.

PENDULUM 3.3 EC Industrial Herbicide treatments in noncropland areas and in Christmas tree plantations are most effective in controlling weeds when adequate rainfall is received within 30 days after application.

Avoid contact of spray solution with driveways, stone, wood, or other porous surfaces. Rinse immediately to avoid staining.

### NONCROPLAND WEED CONTROL

PENDULUM 3.3 EC Industrial Herbicide is recommended for preemergence control of most annual grasses and certain broadleaf weeds as they germinate on noncropland areas such as railroad, utility, highway, and pipeline rights-of-way; highway guardrails, delineators, and sign posts; utility substations, petroleum tank farms, pumping installations, fence rows, storage areas, windbreaks and shelterbelts; and other similar areas.

INTERIOR PRINTING INFORMATION  
 ALL COPY AND LINE ART PRINT BLACK  
 SIZE: INPRINT SYSTEMS 2.5 GALLON 4 PANEL ECL PLOT 6.12.98  
 PRINT METHOD

For postemergence control of weeds, tank-mix combinations of PENDULUM 3.3 EC Industrial Herbicide plus ARSENAL<sup>®</sup> herbicide are recommended. DO NOT tank mix with ARSENAL in California. Recommended rates for the tank-mix compounds should be determined from the product labels of both PENDULUM 3.3 EC Industrial Herbicide and ARSENAL prior to use.

### WEED CONTROL IN AND AROUND ORNAMENTAL PLANTINGS

PENDULUM 3.3 EC Industrial Herbicide is recommended for use on the following established ornamentals and ground covers planted in noncropland areas such as highway rights-of-way, utility substations, or similar areas. Care must be taken that soil or planting mixes have settled firmly following transplanting and that there are no cracks that would allow direct contact of PENDULUM 3.3 EC Industrial Herbicide and roots. Directed sprays where soil and media surfaces are uniformly covered will result in best weed control and ornamental tolerance. PENDULUM 3.3 EC Industrial Herbicide sprays can be safely applied over-the-top of those plants listed below

#### ESTABLISHED ORNAMENTALS

Common Name	Scientific Name
Azalea 'Coral Bells'	<i>Rhododendron</i>
Bamboo, Heavenly	<i>Nandina domestica</i>
Birch, River	<i>Betula nigra</i>
Bottle Brush	<i>Callistemon citrinus</i>
Boxwood, Common	<i>Buxus sempervirens</i>
Bush Honeysuckle	<i>Diervilla lonicera</i>
Common Oleander	<i>Nerium oleander</i>
Dogwood	<i>Cornus cardinal</i>
European Fan Palm	<i>Chamaerops humilis</i>
Fir, Balsam	<i>Abies balsamea</i>
Firethorn	<i>Pyracantha coccinea</i>
Holly, Dwarf Burfordi	<i>Ilex cornulariana</i>
Holly, Japanese Compacta	<i>Ilex crenata compacta</i>
Holly 'Savannah'	<i>Ilex attenuata</i>
Hosta	<i>Hosta lancifolia</i>
Juniper, Andorra	<i>Juniperus horizontalis plumosa</i>

® Registered Trademark of American Cyanamid Company

Common Name	Scientific Name
Juniper 'Pfitzer'	<i>Juniperus chinensis</i>
Juniper 'Sea Green'	<i>Juniperus chinensis media</i>
Juniper 'Blue Chip'	<i>Juniperus horizontalis</i>
Juniper, Savins 'Broadmoor'	<i>Juniperus sabina</i>
Liriope, Green	<i>Liriope spicata</i>
Liriope, 'Monroe White'	<i>Liriope musari</i>
Liriope, Variegated	<i>Liriope muscari 'Variegata'</i>
Maple, Red	<i>Acer rubrum</i>
Mondo Grass	<i>Ophiopogon japonicum</i>
Mountain Laurel	<i>Kalmia latifolia</i>
Natal Plum	<i>Carissa grandiflora</i>
Pittosporum	<i>Pittosporum tobira</i>
Privet, Japanese	<i>Ligustrum japonicum</i>
Spirea, Bridal Wreath	<i>Spirea vanhouttei</i>

#### GROUND COVER ORNAMENTALS

Common Name	Scientific Name
Capeweed	<i>Arctotheca calendula</i>
Daisy, Trailing African	<i>Osteospermum fruticosum</i>
Gazania	<i>Gazania splendens</i>
Rose-of-Sharon	<i>Hypericum calycinum</i>
Iceplant, Large Leaf	<i>Carpobrotus edule</i>
Ivy, English	<i>Helix hedera</i>
Ivy, Geranium	<i>Pelargonium peltatum</i>
Myoporum	<i>Myoporum parviflorum</i>
Pachysandra	<i>Pachysandra terminalis</i>
Potentilla	<i>Potentilla jackmanii</i>
Potentilla	<i>Potentilla verna</i>

#### PRECAUTION!

Apply only to established plantings.

#### WEED CONTROL IN CHRISTMAS TREE PLANTATIONS

PENDULUM 3.3 EC Industrial Herbicide is recommended for preemergence control of the weed species

INTERIOR PRINTING INFORMATION  
ALL COPY AND LINE ART PRINT BLACK  
SIZE: INPRINT SYSTEMS 2.5 GALLON 4 PANEL ECL PLOT 6/12/98  
PRINT METHOD

12-811

listed on this label as they germinate in areas planted with the following Christmas trees:

Common Name	Scientific Name
*Austrian Pine	<i>Pinus nigra</i>
*Balsam Fir	<i>Abies balsamae</i>
*Colorado Blue Spruce	<i>Picea pungens</i>
Douglas Fir	<i>Pseudotsuga menziesii</i>
*Scotch Pine	<i>Pinus sylvestris</i>
*Virginia Pine	<i>Pinus virginiana</i>
*White Fir	<i>Abies concolor</i>
*White Spruce	<i>Picea glauca</i>

\*Do not use in California.

DO NOT apply PENDULUM 3.3 EC Industrial Herbicide to Christmas tree seed or nursery beds. Apply PENDULUM 3.3 EC Industrial Herbicide only to established Christmas tree plantations. PENDULUM 3.3 EC Industrial Herbicide can be applied directly over the top of established Christmas trees.

PENDULUM 3.3 EC Industrial Herbicide will not control established weeds. Therefore, areas to be treated should be free of established weeds at the time of treatment, or PENDULUM 3.3 EC Industrial Herbicide may be used in conjunction with herbicides registered for postemergence use in Christmas trees. Consult the labels of those herbicides for suggested treatments, rates to be used and precautions or restrictions for use in Christmas trees.

**WEED SPECIES CONTROLLED**

For preemergence control of the weed species listed, apply PENDULUM 3.3 EC Industrial Herbicide at the following rates.

Length of Control	PENDULUM 3.3 EC Industrial Herbicide Rate
Short Term Control (2-4 months)	2.4 Quarts/Acre (1.8 fl oz /1000 sq ft)
Long Term Control (6-8 months)	4.8 Quarts/Acre (3.5 fl oz /1000 sq ft)

PENDULUM 3.3 EC Industrial Herbicide will not control established weeds

The efficacy of PENDULUM 3.3 EC Industrial Herbicide will be improved if the application is followed by one-half inch of rainfall or its equivalent in sprinkler irrigation.

The following grass and broadleaf weeds are controlled by preemergence treatments of PENDULUM 3.3 EC Industrial Herbicide at the rates recommended:

**GRASSES CONTROLLED**

Common Name	Scientific Name
Barryardgrass	<i>Echinochloa crus-galli</i>
Bluegrass, Annual	<i>Poa annua</i>
Crabgrass	<i>Digitaria spp.</i>
Crowfootgrass	<i>Dactyloctenium aegyptium</i>
Foxtail, Giant	<i>Setaria faberi</i>
Foxtail, Green	<i>Setaria viridis</i>
Foxtail, Yellow	<i>Setaria lutescens</i>
Goosegrass	<i>Eleusine indica</i>
Itchgrass	<i>Rottboellia exaltata</i>
Johnsongrass (from seed)	<i>Sorghum halepense</i>
Junglerice	<i>Echinochloa colonum</i>
Lovegrass	<i>Eragrostis spp.</i>
Panicum, Browntop	<i>Panicum fasciculatum</i>
Panicum, Fall	<i>Panicum dichotomiflorum</i>
Panicum, Texas	<i>Panicum texanum</i>
Sandbur, Field	<i>Cenchrus incertus</i>
Signalgrass	<i>Brachiaria platyphylla</i>
Sprangletop, Mexican	<i>Leptochloa uninervia</i>
Sprangletop, Red	<i>Leptochloa filiformis</i>
Witchgrass	<i>Panicum capillare</i>
Woolly Cupgrass	<i>Eriochloa villosa</i>

7 1/16"

INTERIOR PRINTING INFORMATION  
 ALL COPY AND LINE ART PRINT BLACK  
 SIZE: IMPRINT SYSTEMS 2.5 GALLON 4 PANEL ECL PLOT 6/12/98  
 PRINT METHOD



12

**BROADLEAF WEEDS CONTROLLED**

Common Name	Scientific Name	Common Name	Scientific Name
Carpetweed	<i>Mollugo verticillata</i>	Pigweed	<i>Amaranthus</i> spp.
Chickweed, Common	<i>Stellaria media</i>	Puncturevine	<i>Tribulus terrestris</i>
Chickweed, Mouseear	<i>Cerastium vulgatum</i>	Purslane	<i>Portulaca oleracea</i>
Clover, Hop	<i>Trifolium procumbens</i>	Purple, Florida	<i>Richardia scabra</i>
Cudweed	<i>Gnaphalium</i> spp.	Rocket, London	<i>Sisymbrium irio</i>
Fiddleneck	<i>Amsinckia intermedia</i>	Shepherdspurse	<i>Capsella bursa-pastoris</i>
Filaree	<i>Erodium</i> spp.	Smartweed, Pennsylvania	<i>Polygonum pensylvanicum</i>
Henbit	<i>Lamium amplexicaule</i>	Spurge, Annual	<i>Euphorbia</i> spp.
Knotweed (prostrate)	<i>Polygonum aviculare</i>	Spurge, Prostrate	<i>Euphorbia matriculata</i>
Kochia	<i>Kochia scoparia</i>	Woodsorrel, Yellow	<i>Oxalis stricta</i>
Lambsquarters	<i>Chenopodium album</i>	Velvetleaf (Buttonweed)	<i>Abutilon theophrasti</i>

7 1/16"

**CYANAMID****American Cyanamid Company**

Agricultural Products Division  
 Specialty Products Department  
 Wayne, NJ 07470

©1994

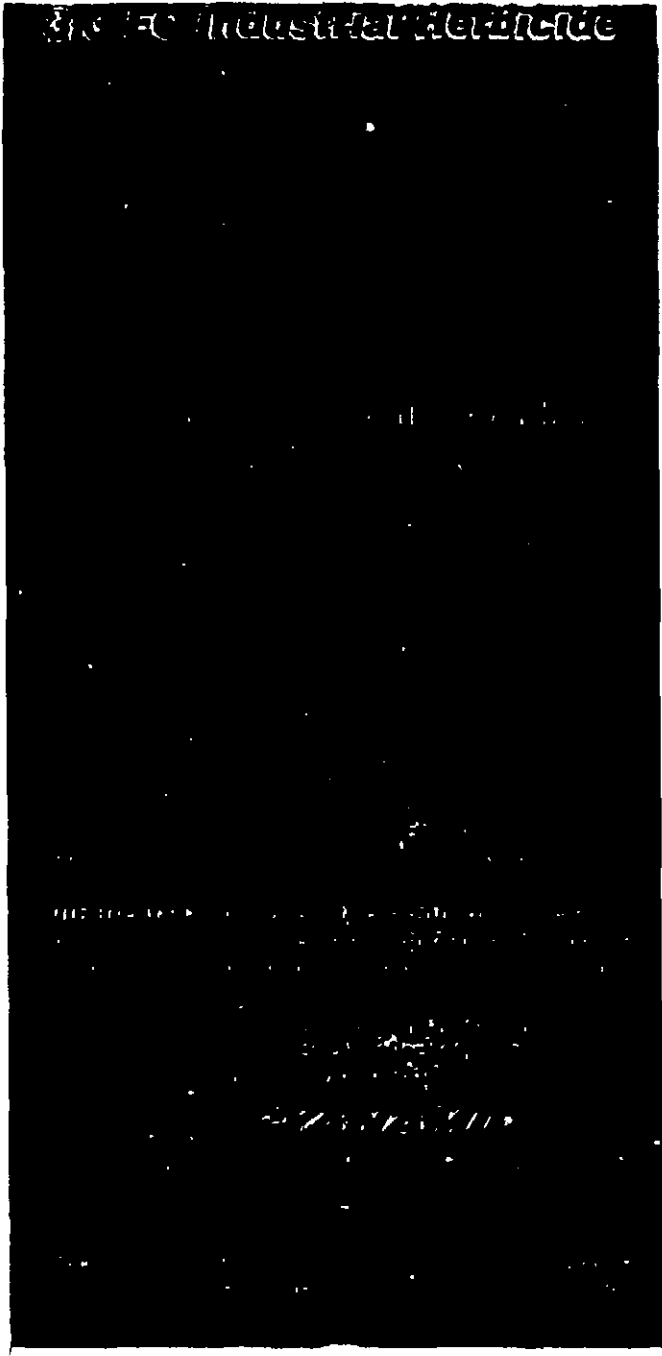
INTEG™ is protected by the following Patents: U.S.A. 4680089, 4592572, 4675062, Canada 472793, and others

5

INTERIOR PRINTING INFORMATION  
 ALL COPY AND LINE ART PRINT BLACK  
 SIZE: PRINTING SYSTEMS 2.5 GALLON 4 PANEL ECL PLOT 6/12/98  
 PRINT METHOD

# PENDULUM

3 EC Industrial Herbicide



7 1/16"

## PRECAUTIONARY STATEMENTS HAZARDS TO HUMANS (AND DOMESTIC ANIMALS)

# CAUTION

Causes moderate eye irritation. Harmful if swallowed or absorbed through the skin. Avoid contact with skin, eyes or clothing. Use with adequate ventilation

See leaflet for Worker Protection Standard (40 CFR 170) requirements.

## ENVIRONMENTAL HAZARDS

This product is toxic to fish. DO NOT apply directly to water, to areas where surface water is present, or to intertidal areas below the mean high water mark. Drift and runoff from treated areas may be hazardous to aquatic organisms in adjacent aquatic sites. DO NOT contaminate water when disposing of equipment washwaters.

## DIRECTIONS FOR USE

It is a violation of Federal law to use this product in a manner inconsistent with its labeling. DO NOT apply this product through any type of irrigation system

See leaflet for complete Directions For Use.

## STORAGE AND DISPOSAL

**STORAGE:** DO NOT STORE BELOW 40°F. Extended storage at temperatures below 40°F can result in the formation of crystals on the bottom of container. If crystallization does occur, store the container on its side at room temperature (70°F) and rock occasionally until crystals redissolve.

DO NOT contaminate water, food, or feed by storage or disposal

**PESTICIDE DISPOSAL:** Pesticide wastes are toxic. Improper disposal of excess pesticide, spray mixture, or rinsate is a violation of Federal law. If these wastes cannot be disposed of by use according to label instructions, contact your State Pesticide or Environmental Control Agency, or the Hazardous Waste representative at the nearest EPA Regional Office for guidance.

**CONTAINER DISPOSAL:** Triple rinse (or equivalent). Then offer for recycling or reconditioning, or puncture and dispose of in a sanitary landfill, by incineration or, if allowed by state and local authorities, by burning. If burned, stay out of smoke.

Observe all cautions and limitations in this label and the labels of products used in combination with PENDULUM 3 3 EC Industrial Herbicide. The use of PENDULUM 3 3 EC Industrial Herbicide not consistent with this label can result in injury to crops, animals, or persons. Keep containers closed to avoid spills and contamination.

See leaflet for Disclaimer

## Attached Panel

### BACK PANEL PRINTING INFORMATION

- PENDULUM LOGO: "PEND" THE BAND BELOW PENDULUM AND @ PRINT BLACK. "ULUM" PRINTS PMS 102 YELLOW WITH BLACK OUTLINE. THE GRAPHIC BARRING THROUGH THE LOW RELEASE 110 POUCH POUCH PRINTS PMS 375 GREEN.
- TOP BAND PRINTS PMS 102 YELLOW. "Industrial Herbicide" AND "3 EC" PRINT BLACK.
- BOTTOM PANEL PRINTS PMS 375 GREEN WITH 110 BLEED OR BOTTOM. ALL COPY AND LINE ART WITHIN PANEL OVERPRINT BLACK.
- ALL REMAINING COPY PRINTS BLACK. (ENTIRE BACK PANEL IS 110)
- SIZE: PRINTING SYSTEMS 2.5 GALLON 4 PANEL ECL 110 G 110 G
- PRINT METHOD:



11/1/94

# PENDULUM<sup>®</sup>

**3.3EC Industrial Herbicide**

**FOR CONTROL OF MOST ANNUAL GRASSES AND CERTAIN BROADLEAF WEEDS IN NONCROPLAND AREAS, ESTABLISHED ORNAMENTALS IN NONCROPLAND AREAS ONLY, AND CHRISTMAS TREE PLANTATIONS**

<b>ACTIVE INGREDIENT:</b>	
pendimethalin, N-(1-ethylpropyl)-3,4-dimethyl-2,6-dinitrobenzenamine	37.4%
<b>INERT INGREDIENTS*</b>	<b>62.6%</b>
<b>TOTAL</b>	<b>100.0%</b>

(1 gallon contains 3.3 lbs. of pendimethalin)  
\*Contains Petroleum Distillates

EPA Reg. No. 241-341

EPA Est. No. 241-MO-1

## KEEP OUT OF REACH OF CHILDREN CAUTION ¡PRECAUCION!

Si usted no entiende la etiqueta, busque a alguien para que se la explique a usted en detalle. (If you do not understand this label, find someone to explain it to you in detail.)

In case of an emergency endangering life or property involving this product, call collect day or night, Area Code 201-835-3100



**American Cyanamid Company**  
Agricultural Products Division  
Specialty Products Department  
Wayne, NJ 07470

©1994

**Net Contents: 110 Gallons 22931-67**

© Registered Trademark of American Cyanamid Company **4/94**

### FIRST AID

**If in eyes:** Hold eyelids open and flush with steady, gentle stream of water for 15 minutes. Call a physician if eye irritation persists. • **If swallowed:** DO NOT induce vomiting. Call a physician or Poison Control Center immediately. • **For skin contact:** Wash thoroughly with soap and water. Call a physician if skin irritation persists.

**NOTE TO PHYSICIAN:** Because of increased risk of chemical pneumonia or pulmonary edema caused by aspiration of the hydrocarbon solvent, vomiting should be induced only under professional supervision.

### PRECAUTIONARY STATEMENTS HAZARDS TO HUMANS (AND DOMESTIC ANIMALS)

## CAUTION

Causes moderate eye irritation. Harmful if swallowed or absorbed through the skin. Avoid contact with skin, eyes or clothing. Use with adequate ventilation.

See leaflet for Worker Protection Standard (40 CFR 170) requirements

### ENVIRONMENTAL HAZARDS

This product is toxic to fish. DO NOT apply directly to water, to areas where surface water is present, or to intertidal areas below the mean high water mark. Drift and runoff from treated areas may be hazardous to aquatic organisms in adjacent aquatic sites. DO NOT contaminate water when disposing of equipment washwaters.

### DIRECTIONS FOR USE

It is a violation of Federal law to use this product in a manner inconsistent with its labeling. DO NOT apply this product through any type of irrigation system.

See leaflet for complete Directions For Use

### STORAGE AND DISPOSAL

**STORAGE:** DO NOT STORE BELOW 40°F. Extended storage at temperatures below 40°F can result in the formation of crystals on the bottom of container. If crystallization does occur, store the container on its side at room temperature (70°F) and rock occasionally until crystals redissolve.

DO NOT contaminate water, food, or feed by storage or disposal.

**PESTICIDE DISPOSAL:** Pesticide wastes are toxic. Improper disposal of excess pesticide, spray mixture, or residue is a violation of Federal law. If these wastes cannot be disposed of by use according to label instructions, contact your State Pesticide or Environmental Control Agency, or the Hazardous Waste representative at the nearest EPA Regional Office for guidance.

**CONTAINER DISPOSAL:** Triple rinse (or equivalent). Then offer for recycling or reconditioning, or puncture and dispose of in a sanitary landfill, by incineration or, if allowed by state and local authorities, by burning. If burned, stay out of smoke.

Observe all cautions and limitations in this label and the labels of products used in combination with PENDULUM 3.3 EC Industrial Herbicide. The use of PENDULUM 3.3 EC Industrial Herbicide not consistent with this label can result in injury to crops, animals, or persons. Keep containers closed to avoid spills and contamination.

See leaflet for Disclaimer

PULL DOWN TAB TO ACCESS INFORMATION BOOKLET.

Stay Behind Pouch

PRINTER INFORMATION  
ALL COPY AND LINE ART PRINT BLACK

