



OFFICE OF CHEMICAL SAFETY AND POLLUTION PREVENTION

WASHINGTON, D.C. 20460

November 21, 2025

Mandy Slack
Sr. Analyst, Regulatory Affairs
The Scotts Company
P.O. Box 190
Marysville, OH 43040

Subject: Label Amendment - Registration Review Mitigation for Fluazifop-P-butyl and
Diquat Dibromide
Product Name: GC 1345
EPA Registration Number: 239-2772
Case Number: 480521 & 474365
Application Dates: December 14, 2020 & May 18, 2021

Dear Mandy Slack:

The Agency, in accordance with the Federal Insecticide, Fungicide, and Rodenticide Act (FIFRA), as amended, has completed reviewing all the information submitted with your application to support the Registration Review of the above referenced product in connection with the Fluazifop-P-butyl and Diquat Dibromide Interim Decisions, and has concluded that your submission is acceptable. The label referred to above, submitted in connection with registration under FIFRA, as amended, is acceptable.

Should you wish to add/retain a reference to the company's website on your label, then please be aware that the website becomes labeling under the Federal Insecticide, Fungicide, and Rodenticide Act and is subject to review by the Agency. If the website is false or misleading, the product would be misbranded and unlawful to sell or distribute under FIFRA section 12(a)(1)(E). 40 CFR 156.10(a)(5) list examples of statements EPA may consider false or misleading. In addition, regardless of whether a website is referenced on your product's label, claims made on the website may not substantially differ from those claims approved through the registration process. Therefore, should the Agency find or if it is brought to our attention that a website contains false or misleading statements or claims substantially differing from the EPA approved registration, the website will be referred to the EPA's Office of Enforcement and Compliance Assurance.

A stamped copy of your labeling is enclosed for your records. This labeling supersedes all previously accepted labeling and must be used at your next label printing. You must

submit one copy of the final printed labeling before you release the product for shipment with the new labeling. In accordance with 40 CFR 152.130(c), you may distribute or sell this product under the previously approved labeling for 12 months from the date of this letter. After 12 months, you may only distribute or sell this product if it bears this new revised labeling or subsequently approved labeling. "To distribute or sell" is defined under FIFRA section 2(gg) and its implementing regulation at 40 CFR 152.3.

If you have any questions about this letter, please contact Meaghan Robertson by phone at (202) 566-1069, or via email at robertson.meaghan@epa.gov.

Sincerely,

A handwritten signature in blue ink, reading "Cathryn Britton".

Cathryn Britton
Chief, Risk Management and Implementation
Branch V
Pesticide Re-evaluation Division (7508M)
Office of Pesticide Programs

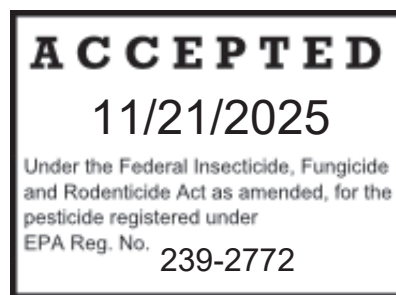
ENCLOSURE: Stamped label

Note to PM:
Bold, italicized text is information for the reader and is not part of the label.
[Bracketed information is optional.] Text separated by / denotes and/or options.

EPA Reg. No. 239-2772

[Herbicide]
[Weed and Grass Killer]

GC 1345



ACTIVE INGREDIENTS
Diquat dibromide 0.20%
Fluazifop-P-Butyl 0.07%
Dicamba, Dimethylamine salt 0.05%
OTHER INGREDIENTS 99.68%
Total 100.00%

KEEP OUT OF REACH OF CHILDREN

CAUTION

See additional precautionary statements and directions for use in booklet.

EPA Reg. No. 239-2772

EPA Est. No. XXX-XX-X (*insert EPA Registered Establishment Number(s)*)
[Superscript is first letter of lot number]

Net Contents

FIRST AID
If in eyes: IMMEDIATELY hold eye open and rinse thoroughly and gently with water for 15 to 20 minutes. Remove contact lenses, if present, after the first 5 minutes, then continue rinsing eye. Call a poison control center or doctor for treatment advice.
NOTE TO PHYSICIAN If in eyes, treat symptomatically. Symptoms may develop gradually. Severe damage may be caused by apparently trivial contact and healing may be delayed. Medical supervision should be continued until healing is complete.
Have the product container or label with you when calling a poison control center or doctor, or going for treatment. You may also contact 1-877-465-5161 for emergency medical treatment information.

PRECAUTIONARY STATEMENTS

HAZARDS TO HUMANS AND DOMESTIC ANIMALS

CAUTION

Wash thoroughly with soap and water after handling and before eating, drinking, chewing gum, using tobacco, or using the toilet. Prolonged or frequently repeated skin contact may cause allergic reactions in some individuals.

ENVIRONMENTAL HAZARDS

This pesticide is toxic to fish and aquatic invertebrates. To protect the environment, do not allow pesticide to enter or run off into storm drains, drainage ditches, gutters or surface waters. Applying this product in calm weather when rain is not predicted for the next 24 hours will help to ensure that wind or rain does not blow or wash pesticide off the treatment area.

GROUNDWATER ADVISORY:

This chemical has properties and characteristics associated with chemicals detected in groundwater. This chemical may leach into groundwater if used in areas where soils are permeable, particularly where the water table is shallow.

SURFACE WATER ADVISORY:

This product may impact surface water quality due to runoff of rain water. This is especially true for poorly draining soils and soils with shallow ground water. This product is classified as having a high potential for reaching surface water via runoff.

A level, well-maintained vegetative buffer strip between areas to which this product is applied and surface water features such as ponds, streams, and springs will reduce the potential loading of fluazifop-P-butyl from runoff water and sediment. Runoff of this product will be reduced by avoiding applications when rainfall or irrigation is expected to occur within 48 hours

NON-TARGET ORGANISM ADVISORY:


This product is toxic to plants and may adversely impact the forage and habitat of non-target organisms, including pollinators, in areas adjacent to the treated site. Protect the forage and habitat of non-target organisms by following label directions intended to minimize spray drift.

[WARRANTY INFORMATION]



NOTICE: To the extent consistent with applicable law, buyer assumes all risks of use, storage or handling of this product not in accordance with directions.

DIRECTIONS FOR USE

It is a violation of Federal law to use this product in a manner inconsistent with its labeling.

- Read entire label before using this product.
-  People and pets may re-enter after the treated area has been allowed to dry.

USE RESTRICTIONS

- **DO NOT** apply this product in a way that will contact any person or pet either directly or through drift.
- Only persons applying this product may be in the area during application.
- Keep people and pets out of the area during application. 
-  **DO NOT** allow people or pets to enter the treated area until sprays have dried.
- **DO NOT** mow, cut, or disturb treated vegetation for at least 7 days following application.
- **DO NOT** use on or around food or feed crops.
- **DO NOT** apply more than 1 gallon of product per 350 sq ft in a single application. 1 gallon of product contains 0.0166 lb diquat dibromide, 0.0056 lb fluazifop-p-butyl, 0.0044 lb dicamba.
- **DO NOT** apply more than 2 gallons of product per 350 sq ft per year (2 applications of 1 gallon). 2 gallons of product contain 0.0332 lb diquat dibromide, 0.0112 lb fluazifop-p-butyl, 0.0088 lb dicamba.
- If retreatment is necessary, wait 28 days before making a second application.
- **DO NOT** make more than 2 broadcast applications per year.

SPRAY DRIFT ADVISORIES

THE APPLICATOR IS RESPONSIBLE FOR AVOIDING OFF-SITE SPRAY DRIFT. BE AWARE OF NEARBY NON-TARGET SITES AND ENVIRONMENTAL CONDITIONS.

IMPORTANCE OF DROPLET SIZE

An effective way to reduce spray drift is to apply large droplets. Use the largest droplets that provide target pest control. While applying larger droplets will reduce spray drift, the potential for drift will be greater if applications are made improperly or under unfavorable environmental conditions.

HAND HELD TECHNOLOGY APPLICATIONS

Take precautions to minimize spray drift.

Rate Conversion Chart

fl oz product	lb diquat dibromide	lb fluazifop-p-butyl	lb dicamba
24	0.0031	0.0011	0.0008
32	0.0042	0.0014	0.0011
128 (1 gallon)	0.0166	0.0056	0.0044
170 (1.33 gallon)	0.0221	0.0074	0.0059
256 (2 gallons)	0.0332	0.0112	0.0088

HOW IT WORKS

The dual action of GC 1345/this product kills all types of weeds and grasses. One ingredient works on contact with visible results within hours. The other two ingredients are absorbed and move within the plant, penetrating deep to kill down to the root.

WHERE TO USE

- Around perennial landscape plants, shrubs, or trees
- Patios, walkways, driveways
- Gravel or mulch beds
- Along fences, around buildings
- Preparing landscaped areas
- Lawn renovation

SRAYER DIRECTIONS

NOTE TO PM: For all Options below Graphics illustrating a step or group of steps may appear on final printed label

OPTION 1 - [Trigger Sprayer Directions]

- Twist nozzle tip to adjust the spray pattern.
- Spray according to directions – See *How to Apply*.
- When done spraying, turn nozzle to “OFF” position.]

OPTION 2 - [Trigger Sprayer Directions – Small RTU]

[Applicator (Device) (Applicator Name) Directions/Instructions]

[HOW TO USE/APPLY:]

[Spray]

1. Turn/ adjust sprayer nozzle to desired spray [setting].
2. [Squeeze trigger repeatedly [to spray].]

[Finish]

1. [Turn sprayer nozzle to “OFF”/X]

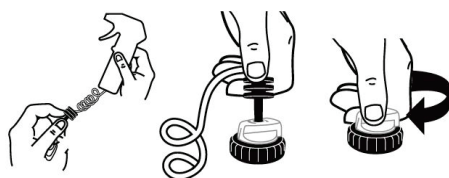
OPTION 3 - [Trigger Sprayer Directions – Large RTU]

[Applicator (Device) (Applicator Name) Directions/Instructions]

[HOW TO USE /APPLY:]

[Spray]

1. Remove sprayer/Applicator Name from bottle/holster/holder by sliding [pulling] sprayer up.
2. Unwrap/uncoil hose and insert [[color] hose connector] into [color] spout /knob/ opening/lid on bottle/cap/knob/lid/opening [until it clicks].
3. [Flip up [color] spout until fully upright] [Twist/turn spout/knob to “ON”] [Pull spout up].
4. Turn sprayer nozzle to desired spray [pattern/setting].
5. Squeeze trigger repeatedly [to spray].



[Finish]

1. Turn/twist sprayer nozzle to “OFF” [X].
2. [Push/turn/twist cap/knob/spout to “OFF” [X]/[Flip spout closed.]
3. **[DO NOT DISCONNECT HOSE CONNECTOR FROM SPOUT/CAP/KNOB/OPENING].**
4. Place sprayer back into [holster] holder/clip/lug/side of bottle.

OPTION 4 - Directions for EZ Pull and Apply™ Sprayer

- Remove sprayer and hose from side carrier.
- Insert plug at end of hose into spout on cap *until it clicks* into place.
- Flip up spout.
- Grasp sprayer by the handle and point away from body.
- Slowly pull the ring at the bottom of the spray handle.
- Twist nozzle tip to adjust the spray pattern.
- Press and hold button on the sprayer to begin spraying.
- Pull ring at bottom of sprayer as needed to continue spraying.
- Spray according to directions – See *How to Apply*.

OPTION 5 – Directions for Pull ‘N Spray® II

[Applicator (Device) (Applicator Name) Directions/Instructions]

[HOW TO USE/APPLY:]

[Spray]

1. Remove sprayer/Applicator Name from bottle/holder [by sliding/pulling sprayer up].
2. Unwrap/uncoil hose and insert [[color] hose connector] into [color] spout/knob.opening/lid on bottle cap/knob/lid/opening [until it clicks].
3. [Flip up [color] spout until fully upright] [Twist/turn spout/knob to “ON”] [Pull spout up].
4. Turn sprayer nozzle to desired spray [pattern/setting].
5. Point sprayer away from body. Slowly pull ring at bottom of sprayer until it stops, and hold for two [2] seconds to fill sprayer.
6. Press trigger to spray.

[Finish]

1. Turn/twist sprayer nozzle to “OFF” [X].
2. [Push/turn/twist cap/knob/spout to “OFF” [X] / [Flip spout closed.]
3. **[DO NOT DISCONNECT HOSE CONNECTOR FROM SPOUT/CAP/KNOB/OPENING.]**
4. [Place sprayer back into [holster] holder/clip/lug/side of bottle.]

OPTION 6 – Directions for Pump ‘N Go® 2 Sprayer

Instructions for Printing on the Wand and Handle:

Wand: [Insert Arrow Graphic]  SPRAY POSITION **Handle:** [Insert Arrow Graphic] 
RELEASE PRESSURE AFTER USE Push handle to cap & turn. RETIGHTEN.

[HOW TO ASSEMBLE AND USE INSTRUCTIONS]

1. CUT Carefully cut the zip ties securing the hose and pump handle with scissors. Use caution not to cut the [Insert Color] hose.

2. CONNECT Unwind hose. Firmly push the connector at the end of the hose onto the spout on the pump, until it locks into place.

3. EXTEND WAND Lift sprayer wand off bottle. Push [Insert Color] button while pulling out on the wand nozzle tip. Fully extend wand until [Insert Color] button snaps into SPRAY POSITION. **NOTE:** Trigger will not function until wand is fully extended and [Insert Color] button is visible in the SPRAY POSITION.

4. PUMP Make sure handle is screwed on **tightly** or the bottle will not pressurize. Pump container [Insert Number of Pumps to Prime X-X] times to pressurize bottle. A full bottle requires fewer pumps than an empty bottle. Pumping to the higher range will provide longer spray duration. After pumping, push pump down and turn handle clockwise to lock into carrying position. **NOTE:** This bottle is designed to expand under pressure and cannot be over-pressurized.

5. SPRAY Aim wand. Spray by pushing down trigger with thumb. Adjust spray pattern by rotating nozzle tip up to one-half rotation. Spray weeds [and grasses] until **thoroughly wet**.

6. STORE When finished spraying, push the [Insert Color] button and retract the wand until the [Insert Color] button snaps back into the original storage position. Place wand back onto [the top of] the bottle [in the integrated holster] with nozzle [facing down/ tip extended through the eyelet opening].

7. DEPRESSURIZE Push pump handle all the way down and turn pump handle and cap counter-clockwise to relieve pressure, then retighten to store.

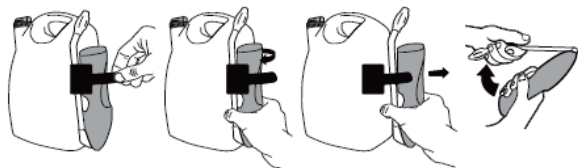
OPTION 7 – Directions for Battery Powered Wand

[[Applicator Name] [Applicator/Wand] Directions]

[HOW TO USE /APPLY:]

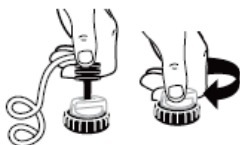
[Prep [Wand]]

1. Remove sprayer [Applicator Name] from [holder] holster/clip/lug/side of bottle.
2. [Remove [color] pull strip to activate batteries].
3. Unfold [Flip Open] [Applicator Name] [wand] until it clicks/locks into position.



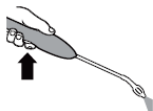
[Connect]

1. Unwrap/uncoil hose and insert [[color] hose connector] into [color] spout/knob/opening/lid on [bottle] cap [until it clicks].
2. [Flip up [color] spout/knob until fully upright.] [Twist/turn spout/knob to “ON”.] [Pull spout up].



[Spray]

1. Turn sprayer nozzle to desired spray [pattern].
2. [Slide [color] switch on trigger to Unlock/lock].
3. Press trigger to spray.



[Finish]

1. Turn [sprayer] nozzle to “OFF” [X].
2. [Slide [color] switch on trigger to “Lock”]
3. [Push/turn/twist cap/knob/spout to “OFF” [X]/[Flip spout closed].]
4. Fold [Applicator Name] wand closed and place sprayer back in [holder] clip/lug/side of bottle.

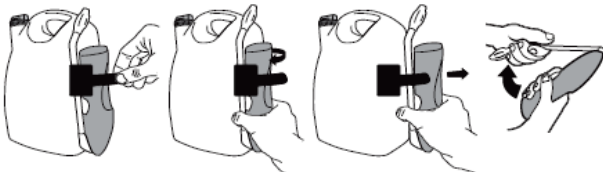
Important Use Information: DO NOT submerge in water. When storing sprayer for long periods, remove batteries.

[To replace batteries: See marked diagram inside battery compartment.]

Option 8 – Directions for Battery Powered Wand

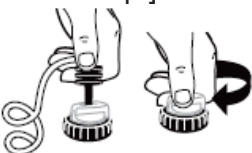
[Prep [Wand]]

1. Remove [Applicator Name/ sprayer] from [bottle/ holster/ holder] by [sliding/ pulling] sprayer up].
2. [Remove [insert color] pull strip to activate batteries.]
3. [Unfold/ Flip Open] [Applicator Name/ applicator/ wand] until it [clicks/ locks] into position.]
4. [Extend [wand/ applicator/ nozzle] [fully].]



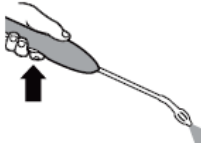
[Connect]

1. Unwrap/Uncoil hose and insert [insert color] hose connector into [insert color] (spout/ knob/ opening) on bottle cap [until it clicks].
2. Flip up [insert color] spout until fully upright. [Twist [spout/ knob] to “ON”.] [Pull spout up.]



[Spray]

1. Turn sprayer nozzle to [desired spray/ foam/ or/ fan setting] [“On”].
2. [Slide [insert color] switch on trigger to “Unlock” [insert illustration].]
3. Press trigger to spray.



[Finish]

1. [Turn nozzle to [“OFF”/ X].]
2. [Slide [insert color] switch on trigger to “Lock”]
3. [Fold [Applicator Name/ wand/ applicator] closed [and place sprayer [wand] back in [holster/ holder].]

Option 9 – Directions for Battery Powered Wand

Wand Safety Sticker or Printed on the Handle: Always lock after use [Insert icon]



[HOW TO ASSEMBLE AND USE INSTRUCTIONS]

1. Remove [Unsnap holder/ Twist left/ Pull]

- Remove [wand/ Insert Applicator Name] from side clip.
- Remove protective strip from battery compartment to activate batteries.
- [Pull connector by slightly twisting from side clip and unwrap hose completely.]

2. Connect

- Insert [Insert Color] plug at end of hose into knob on cap. Turn knob to ON.]
- [Remove protective shield from side clip and attach over nozzle.]

3. Extend

- Flip open [wand/ Insert Applicator Name] until it clicks and locks into position.

4. Spray

- Slide trigger lock on [wand/ Insert Applicator Name] handle to the unlocked position.
- Twist nozzle to desired spray pattern.
- [Use shield to cover the weeds or grasses you want to kill.]
- Point [wand/ Insert Applicator Name] nozzle away from body and hold [Insert Color] trigger for continuous spray.

Important Use Information: **DO NOT** submerge in water. When storing sprayer for long periods, remove batteries.

To Replace Batteries:

Open battery compartment at bottom of applicator. Remove used batteries and replace with new batteries. Securely close battery compartment door. Always use a complete set of the same type when replacing batteries. Best performance is achieved with alkaline batteries. Never mix alkaline, carbon-zinc or rechargeable batteries. Dispose of used batteries according to manufacturer's instructions or in household trash.

Option 10 – [Trigger Sprayer Directions – Quick Connect]

[HOW TO ASSEMBLE AND USE INSTRUCTIONS]

1. Remove sprayer. Pull cord/tubing ALL THE WAY OUT.
2. Insert plug into knob opening on cap.
3. Turn knob to ON. Adjust nozzle to the desired spray setting.

HOW TO REFILL/REFILL DIRECTIONS

For Ready-To-Use Containers with Applicators Intended to be Reused/ Refilled

To refill this empty container, pour product carefully and directly from the [GC 1345, EPA Reg. 239-2772] container designated as the ready-to-use refill container. **DO NOT** add water.

For Ready-To-Use Refill Containers

[Use this product to refill the empty [GC 1345, EPA Reg. 239-2772] / Insert Packaging Type] container by pouring product carefully and directly into the container. **DO NOT** add water. **DO NOT** reuse or refill this container.]

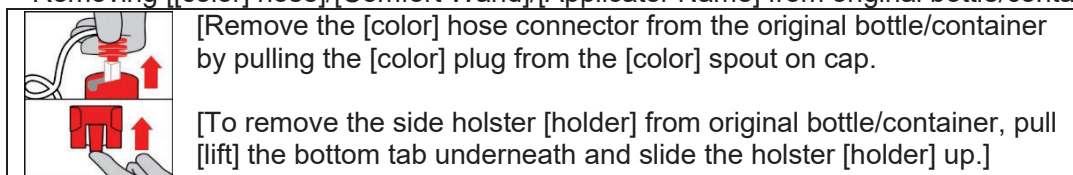
For Battery Operated Sprayers with Wand Containers

The [Insert Applicator Name/ wand] can be reused with the [GC 1345, EPA Reg. 239-2772] refill [bottle/ container]. Read and follow instructions in REFILL DIRECTIONS section to reuse the [Insert Applicator Name/ wand/ applicator].

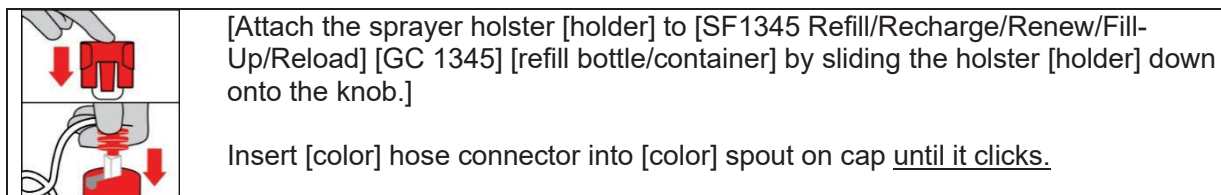
REFILL/REUSE DIRECTIONS

How to attach [applicator name] [wand] to [GC 1345] Refill/Recharge/Renew/Fill-Up/Reload] [GC 1345] [refill bottle/container]:

Removing [[color] hose]/[Comfort Wand]/[Applicator Name] from original bottle/container:



Adding [[color] hose]/[Comfort Wand]/[Applicator Name] to [GC 1345] Refill/Recharge/Renew/Fill-Up/Reload][GC 1345]:



Note to PM: The illustrations may or may not appear on the final printed label. The use of illustrations is dependent upon the size of the packaging.

HOW TO APPLY

- Shake gently before using.
- Spray only the weeds you want to kill. Thoroughly wet the foliage to cover but **DO NOT** spray to runoff.
- For best results, apply when weeds are actively growing and when the air temperature is above 60°F.
- **DO NOT** spray plants you desire to keep. You may use a cardboard or plastic shield to protect desirable plants from spray.
- Apply when air is calm to prevent drift to desirable plants.
- If desirable plants are accidentally sprayed, rinse them off immediately with plenty of water.

WHAT TO EXPECT

- Sprayed weeds begin to [wilt] [die] within hours after application, with complete kill within [days to] 1-2 weeks.
- A single application controls most [listed] weeds.
- Rainproof: rainfall or watering [15/30] minutes after application will not reduce weed control.
- Perennial landscape plants, trees, and shrubs may be planted 1 day after application.

LAWN RENOVATION/REPLACEMENT

Use GC 1345/this product to kill grass and weeds before planting new lawn.

- Determine the size of the area to be treated. [One gallon treats 350 sq. ft.] [One quart treats 88 sq. ft.]
- **DO NOT** mow within [1 week] [7 days] before spraying or [1 week] [7 days] after spraying.
- If soil is dry, water every other day for a week before application.
- Wait 7 days after last application to rake, till, or replant with seed or sod.

Note to PM:**Bold, italicized text is information for the reader and is not part of the label.**

[Bracketed information is optional.] Text separated by / denotes and/or options.

EPA Reg. No. 239-2772

Weeds Controlled [Optional]

Alder	Cupgrass, Southwestern	Mallow, Common	Pusley, Florida
Aspen, Quaking	Cupgrass, Woolly	Lantana	Quackgrass
Bahiagrass	Cudweed, Purple	Lettuce, Prickly	Rabbitfootgrass
Barley, Wild	Dallisgrass	Little Bitter Cress	Ragweed
Bedstraw	Dandelion	London Rocket	Ragweed, Common
Beggarweed	Dandelion, False	Lovegrass, Diffuse	Ragweed, Giant
Beggarweed, Creeping	Dewberry	Mallow, Venice	(Buffaloweed)
Beggarweed, Florida	Dock, Curly	Marestail (Horseweed)	Ragwort, Tansy
Bermudagrass	Dog fennel (Cypressweed)	Mayweed	Red Rice
Bentgrass	Eveningprimrose	Medic, Black	Ryegrass, Annual
Bindweed, Field	Eveningprimrose, Common	Medic, Blue	Ryegrass, Italian
Blackberry, Wild	Eveningprimrose, Cutleaf	Milkweed	Ryegrass, Perennial
Bluegrass	Fennel	Morningglory, Ivyleaf	Sandbur, Field
Bluegrass, Annual	Fescue species	Morningglory, Tall	Sandbur, Southern
Bluegrass, Kentucky	Fescue, Tall	Morningglory, Wild	Sandspur
Brassbuttons	Fiddleneck	Mullein, Common	Sesbania, Hemp
Broadleaf Signalgrass	Filaree	Mustard, Blue	Shattercane
Bromegrass	Foxtail	Mustard, Tansy	Shepherdspurse
Bromegrass, Smooth	Foxtail, Giant	Mustard, Tumble	Sida, Prickly (Teaweed)
Brownseed	Foxtail, Green	Mustard, Wild	Smartweed
Brome, Downy	Foxtail, Yellow	Nimblewill	Smartweed, Green
Bur clover	Geranium, Wild	Nutsedge (Nutgrass)	Smartweed, Pennsylvania
Buttercup	Goosegrass	Nutsedge, yellow	Smartweed, Swamp
Buttercup, Roughseed	Groundsel, Common	Nutsedge, purple	Smooth Cat's Ear
Buttercup, Tall	Guineagrass, Seedling	Oats, wild	Sorghum alnum
Carrot, Wild (Queen Anne's Lace)	Henbit	Oldenlandia	Sourdock
Catchfly, Nightflowering	Horsenettle	Orchardgrass	Sowthistle
Ceanothus	Horseradish	Oxalis	Sowthistle, Annual
Centipedegrass	Ironweed	Oxalis, yellow	Sowthistle, Spiny
Chamomile, Corn	Iceplant	Pampasgrass	Sprangletop
Cheeseweed	Ironweed	Panicum, Fall	Spurge
Chickweed	Itchgrass	Panicum, Texas	Spurge, Garden
Chickweed, Common	Johnsongrass	Paspalum	Spurge, Leafy
Chickweed, Mouseear	Johnsongrass, Rhizome	Pennycress, Field	Spurge, Prostrate
Clover	Johnsongrass, Seedling	(Fanweed, Frenchweed, Stinkweed)	Spurge, Spotted
Clovers (Annual)	Junglerice	Pennywort	Starthistle, Yellow
Clover, Red	Kikuyugrass	Pigweed	St. Augustine grass
Clover, Sweet	Knapweed	Pigweed, Prostrate	Thistle, Artichoke
Clover, White	Knapweed, Black	Pigweed, Redroot	Thistle, Bull
Cockle, White	Knapweed, Diffuse	(Carelessweed)	Thistle, Canada
Cocklebur	Knapweed, Russian	Pigweed, Rough	Timothy
Cogongrass	Knapweed, Spotted	Pigweed, Smooth	Toadflax, Blue
Coral bead	Knawel	Pigweed, Tumble	Torpedograss
Crabgrass	Knotweed	Plantain	Trumpet creeper
Crabgrass, Hairy	Kochia	Plantain, Broadleaf	(Buckvine)
Crabgrass, Large	Ladysthumb	Plantain, Buckhorn	Vaseygrass
Crabgrass, Smooth	Lambsquarters	Plantain, common	Velvetleaf
Crabgrass, Southern	Lambsquarters, Common	Puncturevine	Virginia Creeper
Crabgrass, Tropical	Maiden Cane	Purslane	Whiteweed
Creeping Charlie	Mallow	Purslane, Common	Wild Oats
Cupgrass, Prairie			Wild Proso Millet
			Wirestem Muhly
			Witchgrass
			Yarrow
			Yarrow, Common

STORAGE AND DISPOSAL

Storage & Disposal for Trigger Sprayer, Refill (Nonrefillable container)

STORAGE AND DISPOSAL

PESTICIDE STORAGE: Keep from freezing. To be stored in original container and placed in areas inaccessible to children. To prevent accidental poisoning; never store this product in food, drink, or unlabeled containers.

PESTICIDE DISPOSAL AND CONTAINER HANDLING: Nonrefillable container. Do not reuse or refill this container. **If empty:** Place in trash or offer for recycling if available. **If partly filled:** Call your local solid waste agency for disposal instructions. Never place unused product down any indoor or outdoor drain.

Storage & Disposal for Trigger Sprayer, Trigger (Refillable container)

STORAGE AND DISPOSAL

PESTICIDE STORAGE: Keep from freezing. To be stored in original container and placed in areas inaccessible to children. To prevent accidental poisoning; never store this product in food, drink, or unlabeled containers. [Rotate nozzle to closed position.] [Turn knob on cap to OFF. NO NEED TO DISCONNECT TRIGGER SPRAYER. Close nozzle on trigger sprayer. Place sprayer back in side clip.]

PESTICIDE DISPOSAL AND CONTAINER HANDLING: Nonrefillable container. Do not reuse or refill this container unless the Directions for Use allow a different concentrated or ready-to-use product to be diluted in or poured directly into the container. Reuse or refill this container according to the directions contained in the HOW TO REFILL section. **If empty:** Place in trash or offer for recycling if available. **If partly filled:** Call your local solid waste agency for disposal instructions. Never place unused product down any indoor or outdoor drain.

Storage & Disposal for Pull 'N Spray II

STORAGE AND DISPOSAL

PESTICIDE STORAGE: Keep from freezing. To be stored in original container and placed in areas inaccessible to children. To prevent accidental poisoning; never store this product in food, drink, or unlabeled containers.

PESTICIDE DISPOSAL AND CONTAINER HANDLING: [Applicator Name] can be reused with [Product Name refill bottle/container]. Follow instructions in the Reuse Directions when reusing [applicator name]. OR Nonrefillable container. Do not reuse or refill this container. **If empty:** Place in trash or offer for recycling if available. **If partly filled:** Call your local solid waste agency for disposal instructions. Never place unused product down any indoor or outdoor drain.

Pump 'N Go® 2 Sprayer

STORAGE AND DISPOSAL

PESTICIDE STORAGE: Keep from freezing. To be stored in original container and placed in areas inaccessible to children. To prevent accidental poisoning; never store this product in food, drink, or unlabeled containers. Push the [Insert Color] button and retract the wand until the [Insert Color] button snaps back into the original STORAGE POSITION. Place wand back onto [the top of] the bottle [in the integrated holster] with nozzle [facing down/ tip extended through the eyelet opening]. Push pump handle all the way down and turn pump handle and cap counter-clockwise to relieve pressure, then retighten to store.

PESTICIDE DISPOSAL AND CONTAINER HANDLING: Nonrefillable container. Do not reuse or refill this container unless the directions for use allow a different concentrated or ready-to-use product to be diluted in or poured directly into the container. Reuse or refill this container according to the directions contained in the HOW TO REFILL section. **If empty:** Place in trash or offer for recycling if available. **If partly filled:** Call your local solid waste agency for disposal instructions. Never place unused product down any indoor or outdoor drain.

Battery Powered Wand

STORAGE AND DISPOSAL

PESTICIDE STORAGE: Keep from freezing. To be stored in original container and placed in areas inaccessible to children. To prevent accidental poisoning; never store this product in food, drink, or unlabeled containers.

PESTICIDE DISPOSAL AND CONTAINER HANDLING: [Applicator Name] can be reused with [Product Name refill bottle/container]. Follow instructions in Reuse Directions when reusing [applicator name]. OR Nonrefillable container. Do not reuse or refill this container. **If empty:** Place in trash or offer for recycling if available. **If partly filled:** Call your local solid waste agency for disposal instructions. Never place unused product down any indoor or outdoor drain.

Battery Powered Wand

STORAGE AND DISPOSAL

PESTICIDE STORAGE: Keep from freezing. To be stored in original container and placed in areas inaccessible to children. To prevent accidental poisoning; never store this product in food, drink, or unlabeled containers. Turn knob on cap to OFF. NO NEED TO DISCONNECT SPRAYER. Close nozzle on wand sprayer. Engage trigger lock. Flip the wand closed and place back in side clip.

PESTICIDE DISPOSAL AND CONTAINER HANDLING: Nonrefillable container. Do not reuse or refill this container unless the Directions for Use allow a different concentrated or ready-to-use product to be diluted in or poured directly into the container. Reuse or refill this container according to the directions contained in the HOW TO REFILL section. **If empty:** Place in trash or offer for recycling if available. **If partly filled:** Call your local solid waste agency for disposal instructions. Never place unused product down any indoor or outdoor drain.

Comprehensive List of Marketing Claims [Optional]

The following claims may or may not appear on any label panel or in advertising. Appropriate formula and company specific information will be inserted on Final Printed Label to replace "X".

1. Absorbed into both broadleaf and grass weeds
2. Experience the [GC 1345] Advantage ([peel back this panel for details] [see details inside/underneath this booklet] [see details on back panel])
3. Peel/Open Here
4. [Open] Resealable Label for Directions and Precautions
5. Press to Reseal
6. Kills [annual and perennial] weeds, grasses and other unwanted plants
7. Multipurpose grass and [broadleaf] weed control [with residual weed control]
8. For weed control - kills weeds and grasses in [1-2 weeks] [2-4 weeks] - roots and all
9. Eliminates most common weeds, grasses and unwanted vegetation
10. [Proven] [Trusted] performance
11. Guaranteed effective: Kills [200] [over 150] [over 175] types of weeds and grasses, roots and all, with just one application
12. One application kills [200] [over 150] [over 175] types of weeds and grasses, roots and all
13. Kills [200] [over 150] [over 175] weeds
14. Kills [to] the root [guaranteed]
15. Kills [the toughest weeds and grasses to] the root so [weeds] [they] don't come back
16. Kills the root so weeds don't come back
17. Kills the roots of [both] broadleaf and grassy weeds
18. Kills weeds and grasses down to the root
19. Kills [all types of] [most/many/common] weeds [and grasses]
20. Spray the leaves to kill the roots
21. [A] single application controls most/many/common [listed] weeds
22. Individual results may vary
23. For outdoor residential use
24. No root. No weed. No Problem.
25. Speeds absorption to the root for complete kill
26. Begins [absorbing] [working] on contact
27. Dead [weeds] in a day
28. For weeds that are dead in [a] [one] day
29. [Next day] [This weekend] results: [Begins] [Starts] killing on contact, visible results in/as fast as [1 hour] [2 hours] [3 hours] [4 hours] [24 hours] [hours]
30. [See] [Visible] results in/as fast as [1] [2] [3] [4] hours
31. Works in hours
32. Starts [to kill] [working] immediately
33. Absorbs on contact, starts working immediately
34. Begins to kill on contact
35. Works when absorbed by the foliage of weeds
36. Overnight results
37. Ideal for killing unwanted weeds and grasses throughout your yard.
38. Use along fences; in cracks of walks, drives and patios; and around perennial beds, trees and shrubs
39. Kills weeds around perennial beds, around trees, shrubs and fences, and on patios, paths, sidewalks, sidewalk cracks, walkways, and driveways

40. Can be used many places weeds and grasses grow, including patios, walkways, and driveways; along fences; in landscaping beds; or around perennials, shrubs and trees
41. Kills grasses and [broadleaf] weeds in - Patios - Driveways - Sidewalks - Ornamental Gardens
42. [Spray weeds] [Use] in perennial beds, around trees, shrubs and around fences, and on patios, paths, sidewalks, sidewalk cracks, walkways, and driveways
43. [Use] For Weed Control: Use along fences, paths, patios, sidewalks and driveways, around trees, shrubs, ornamental plantings, perennial beds and buildings, and in brick and gravel walkways
44. Use to trim and edge landscape areas
45. [Use] For Spot Spraying: Use in and around perennial beds, ornamental trees, shrubs, fences, driveways and walkways
46. For control that [doesn't] [won't] wash away
47. Guaranteed effective results even if it rains within hours
48. Won't be washed away by rain or watering [15 minutes] [30 minutes] after treatment
49. Rainfast/rainproof in [15 minutes] [30 minutes].
50. Rain and waterproof in [15 minutes] [30 minutes or less]
51. Once it enters the plant, it won't wash off
52. Rainfast/rainproof in [15/30] minutes - enters the plant on contact
53. Won't wash off
54. Won't wash away
55. Waterproof
56. Weatherproof
57. Triple-Action [formula]
58. [This product/formula] [combines] [3/three] [actives/active ingredients] [combined] [to] deliver both visible results within hours and deep penetration to kill the roots
59. [3/three/triple] actives/active ingredients [combination]*
60. [Combines] 3/three/triple actives/active ingredients [combination]
61. Dual Activity
62. Economical
63. Value [size/sized]
64. Ready To Use
65. Fast-acting [formula]
66. Fast-acting formula moves to the root [more] quickly
67. Quick kill formula
68. Completely kills even the toughest weeds and grasses
69. Kills to the root so weeds don't come back
70. Water-based formula
71. Low odor
72. Battery operated sprayer
73. Batteries included
74. Refill [included]
75. [Insert packaging type] refill
76. [Insert applicator name] Up to X minutes of continuous spray
77. Continuous spray

Note to PM:

EPA Reg. No. 239-2772

Bold, italicized text is information for the reader and is not part of the label.

[Bracketed information is optional.] Text separated by / denotes and/or options.

78. [Insert applicator name] [with] extended reach/continuous spray [illustration]



79. 2X extended reach*

80. Always lock after use [illustration]



81. Extended reach/continuous spray [insert applicator name]

82. [Insert applicator name]/[wand] extends 2 feet [continuous spray] [illustration]



81.

82. [Container] treats/covers [up to] xxxx sq. ft. [Note to reviewer: 24 oz treats up to 65 sq ft, 1 gallon treats up to 350 sq ft]

83. Coverage may vary based on the number, type or size of weeds treated in a given area

84. Spot treat or spray evenly over 350 sq ft

85. Guaranteed [We Guarantee It] [or Your Money Back]

86. Dead Weeds Guaranteed [or Your Money Back]

87. Satisfaction guaranteed or we will gladly refund purchase price

88. Satisfaction guaranteed or your money back with proof of purchase

89. Insert company Promise - satisfaction guaranteed

90. ACE Quality since 1924

*vs previous design [illustration]



Note to PM:

EPA Reg. No. 239-2772

Bold, italicized text is information for the reader and is not part of the label.



[Bracketed information is optional.] Text separated by / denotes and/or options.

The ***insert company name*** Guarantee: If for any reason you, the consumer are not satisfied with this product, mail us your original proof of purchase to obtain a full refund of your purchase price.

Consumer Guarantee: If for any reason you are not satisfied after using this product, simply send us original proof of purchase and we will refund the purchase price.

The ***[insert company/brand]*** Promise: If this [company/brand] product when used for its intended purpose fails to give you complete satisfaction return the item to the [company] store where purchased for free replacement of the same or similar item.

Questions or Comments?

[Call] [800 number] [icon phone]  [or visit [our website at]] [www._____.com] [icon computer] 

©20XX ***Insert Company Name.*** [World rights reserved.]

Manufactured for/Sold by/Made for/Produced for:

The Ortho Group

PO Box 190

Marysville, OH 43040

Insert trademark statement

[Assembled in/ Made in/Product of] [USA/ Insert Country]