



UNITED STATES ENVIRONMENTAL PROTECTION AGENCY  
WASHINGTON, DC 20460

OFFICE OF CHEMICAL SAFETY  
AND POLLUTION PREVENTION

February 26, 2024

Mandy Slack  
Sr. Analyst, Regulatory Affairs  
The Scotts Company d/b/a The Ortho Group  
P.O. Box 190  
Marysville, OH 43040

Subject: Notification per PRN 98-10 – updating label with additional marketing claim

Product Name: GC Concentrate X  
EPA Registration Number: 239-2762  
Application Date: 5/08/2023  
Case Number: 472618

Dear Ms. Slack,

The Agency is in receipt of your Application for Pesticide Notification under Pesticide Registration Notice (PRN) 98-10 for the above referenced product. The Registration Division (RD) has conducted a review of this request for its applicability under PRN 98-10 and finds that the action requested falls within the scope of PRN 98-10.

The label submitted with the application has been stamped “Notification” and will be placed in our records.

Should you wish to add/retain a reference to the company’s website on your label, then please be aware that the website becomes labeling under the Federal Insecticide Fungicide and Rodenticide Act and is subject to review by the Agency. If the website is false or misleading, the product would be misbranded and unlawful to sell or distribute under FIFRA section 12(a)(1)(E). 40 CFR 156.10(a)(5) list examples of statements EPA may consider false or misleading. In addition, regardless of whether a website is referenced on your product’s label, claims made on the website may not substantially differ from those claims approved through the registration process. Therefore, should the Agency find or if it is brought to our attention that a website contains false or misleading statements or claims substantially differing from the EPA approved registration, the website will be referred to the EPA’s Office of Enforcement and Compliance.

If you have any questions, you may contact please contact Sayed Islam at 202-566-2796 or by email at [islam.sayed@epa.gov](mailto:islam.sayed@epa.gov).

Page 2 of 2  
EPA Reg. No. 239-2762  
Case No. 472618



For

Heather McFarley, Product Manager 24  
Fungicide and Herbicide Branch  
Registration Division (7505P)  
Office of Pesticide Programs

NOTE:

EPA Reg. No. 239-2762

**Bold, italicized text is information for the reader and is not part of the label.**  
[Bracketed information is optional text]. Text separated by / denotes and/or options.  
Highlighted text is new. ~~Strikethrough text is being deleted.~~

IMAZAPYR	GROUP	9	HERBICIDE
PELARGONIC ACID	GROUP	26	HERBICIDE

# GC Concentrate X

## NOTIFICATION

239-2762

The applicant has certified that no changes, other than those reported to the Agency have been made to the labeling. The Agency acknowledges this notification by letter dated:

02/26/2024

### Alternate Brand Name:

- Ortho GroundClear Year Long Vegetation Killer<sub>1</sub>

### ACTIVE INGREDIENTS:

Imazapyr, isopropylamine salt.....	0.47%
Pelargonic Acid and related fatty acids.....	5.00%
<b>OTHER INGREDIENTS:</b> .....	<u>94.53%</u>
<b>TOTAL:</b>	100.00%

### THIS PRODUCT CONTAINS:

0.033 lb imazapyr acid equivalent per gallon or 0.38%  
0.417 lb pelargonic acid and related fatty acids per gallon

**KEEP OUT OF REACH OF CHILDREN**

**DANGER PELIGRO**

See [back/side/top/bottom] panel/label/booklet for additional Precautionary Statements and Directions for Use.

Si usted no entiende la etiqueta, busque a alguien para que se la explique a usted en detalle. (If you do not understand the label, find someone to explain it to you in detail.)

FIRST AID
<b>IF IN EYES:</b> Hold eye open and rinse slowly and gently with water for 15-20 minutes. Remove contact lenses, if present, after first 5 minutes, then continue rinsing eye. Call a poison control center or doctor for treatment advice.
Have the product container or label with you when calling a poison control center or doctor, or going for treatment. You may also contact 1-877-465-5161 for emergency medical treatment information.

NET CONTENTS: XX FL OZ (X [GAL/QT/PT]) XX [L/mL]

NOTE:

EPA Reg. No. 239-2762

***Bold, italicized text is information for the reader and is not part of the label.***

[Bracketed information is optional text]. Text separated by / denotes and/or options.

Highlighted text is new. ~~Strikethrough text is being deleted.~~

## PRECAUTIONARY STATEMENTS HAZARDS TO HUMANS & DOMESTIC ANIMALS

**DANGER:** Corrosive. Causes irreversible eye damage. Do not get in eyes or on clothing. Wear goggles. Wash thoroughly with soap and water after handling and before eating, drinking, chewing gum, using tobacco, or using the toilet. Remove and wash contaminated clothing before reuse.

### Personal Protective Equipment (PPE)

Applicators and other handlers must wear:

- Protective eyewear (goggles)
- Long sleeved shirt and long pants
- Shoes plus socks
- Water resistant gloves.

### User Safety Requirements:

- Follow the manufacturer's instructions for cleaning and maintaining PPE. If no such instructions for washables exist, use detergent and hot water. Keep and wash PPE separately from other laundry.

### User Safety Recommendations:

- Users should remove clothing/PPE immediately if pesticide gets inside. Then wash thoroughly and put on clean clothing.
- Users should remove PPE immediately after handling this product. Wash the outside of gloves before removing. As soon as possible, wash thoroughly and change into clean clothing.

## ENVIRONMENTAL HAZARDS:

This product is toxic to plants. Drift and runoff may be hazardous to plants in water adjacent to treated areas. For terrestrial uses. Do not apply directly to water, or to areas where the surface water is present or to intertidal areas below the mean high water mark. Do not contaminate water when disposing of equipment washwater or rinsate.

## DIRECTIONS FOR USE:

It is a violation of Federal law to use this product in a manner inconsistent with its labeling. Read entire label.

### Non-Agricultural Use Requirements

The requirements in this box apply to uses of this product that are NOT within the scope of the Worker Protection Standard for agricultural pesticides (40 CFR Part 170). The WPS applies when this product is used to produce agricultural plants on farms, forests, nurseries or greenhouses.



Keep people and pets off treated areas until spray solution has dried.

**Bold, italicized text is information for the reader and is not part of the label.**

[Bracketed information is optional text]. Text separated by / denotes and/or options.

Highlighted text is new. ~~Strikethrough text is being deleted.~~

## Restrictions

- DO NOT apply this product in a way that will contact any person, pet, either directly or through drift.
- Keep people and pets out of the area during application.
- DO NOT use on lawns, on or around fruits, vegetables, flowers, shrubs, trees, or over the root zone of shrubs or trees.
- DO NOT apply over their root systems. For shrubs and trees, DO NOT apply closer than twice the distance from the trunk to the drip line [areas shaded in color] as roots may be within this area. 
- DO NOT apply to slopes [areas shaded in color] as movement on soil surface may damage desirable plants down the slope. 
- DO NOT apply next to fence if desirable plants are growing on the other side or if future planting is intended.
- DO NOT use before planting lawns, fruits, vegetables, flowers, or other plants because GC Concentrate X/this/the product remains active in soil for up to one year. In heavy clay soil, weed control may exceed one year.
- The maximum single application rate is 24 fl oz per 300 sq ft (0.9 lb imazapyr acid equivalent and 12.1 lb pelargonic acid per acre per application).
- The maximum number of applications is limited to 1 per year (0.9 lb imazapyr acid equivalent and 12.1 lb pelargonic acid per acre per year).
- The maximum yearly application rate is 24 fl oz per 300 sq ft (0.9 lb imazapyr acid equivalent and 12.1 lb pelargonic acid per acre per application).

## HOW IT WORKS/PRODUCT INFORMATION

- GC Concentrate X/this/the product kills existing vegetation [weeds/[grass(es)]]/[and/all/&]/[vegetation] and prevents/[blocks][controls]/[stops] regrowth for up to 1 year.

## WHERE TO APPLY/USE:

- Apply GC Concentrate X/this/the product only where no vegetation is desired for at least a year.
- Use on driveways, sidewalks, fence lines, paver patios, walkways, gravel areas, rock and desert landscapes, under decks, parking areas, and along fences and curbs.

**Note to PM: the following is alternative text to the previous bullet point.**

- [Use where no plant growth is wanted for at least a year on driveways, sidewalks, fence lines, paver patios, walkways, gravel areas, parking areas, and other hardscapes.]

## HOW MUCH TO USE/APPLY:

- Add 24 fl oz of product per 1 gallon of water to treat up to 300 sq ft (or 0.9 lb imazapyr ae/acre, and 12.1 lb pelargonic acid/acre).

## WHEN TO APPLY/USE:

- Water the day before application if soil is dry.
- Apply to bare ground or when weeds are [present] [actively growing].
- If weeds are taller than 6 inches, mow or cut down [weeds] and remove debris before treatment.
- For best results, apply [on a sunny day] with/when temperatures are above 60°F.
- To prevent the growth of listed weeds [under patios/ asphalt driveways/ tennis courts/play areas/ and parking areas], apply before laying surfacing materials.
- Apply only to areas where no vegetation growth is wanted for up to 1 year.

NOTE:

EPA Reg. No. 239-2762

**Bold, italicized text is information for the reader and is not part of the label.**

[Bracketed information is optional text]. Text separated by / denotes and/or options.

Highlighted text is new. ~~Strikethrough text is being deleted.~~

- In heavy clay soil, plant growth may be prevented for more than one year.
- In areas of heavy rainfall, applications every 6 to 8 months may be necessary.
- If weeds re-grow in treated areas, it is advised that these weeds be spot treated with NNS 79766 **Note to PM: EPA Reg. No. 91161-1 is an RTU that contains ammonium nonanoate.**

**HOW TO USE:**

**Tank Sprayer**

[Applicator (Device)(Applicator Name) Directions/Instructions]

- Add 24 fl oz of product per 1 gallon of water. This rate will apply 0.9 lb imazapyr ae/acre, and 12.1 lb pelargonic acid per acre.
- Apply to places where vegetation is not desired; do not attempt to treat more than 300 sq ft.
- Allow to soak into ground, avoiding runoff to nearby desirable plants.

**Important:**

To prevent sprayer from clogging, always clean after use, as directed.

**STORAGE AND DISPOSAL**

**PESTICIDE STORAGE:** Store product in original container in a safe place. Protect from freezing.

**PESTICIDE DISPOSAL AND CONTAINER HANDLING:** Nonrefillable container. Do not reuse or refill this container. **If empty:** Place in trash or offer for recycling if available. **If partly filled:** Call your local solid waste disposal agency for disposal instructions. Never place unused product down any indoor or outdoor drain.

**Optional Marketing Claims**

*The following Product Facts format is optional and the information may appear inside or outside of a box.*

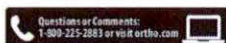
**PRODUCT FACTS:**

**[What It Does:]** Kills unwanted weeds, grasses & plants.

**[Where to Use:]** On driveways, sidewalks, fence lines, paver patios, walkways, gravel areas, rock and desert landscapes, under decks, parking areas, and along fences and curbs where no [weeds/[grass(es)]]/[and/and all/&]/[vegetation] is desired.

**[When to Use:]** Apply when weeds are [present][actively growing]. For best results, apply on a sunny day with temperatures above 60°F. Apply only to areas where no vegetation growth is wanted for up to 1 year.

**Questions & Comments:**



Call 1-800-225-2883 or Visit [our Website at www.]ortho.com

**Bold, italicized text is information for the reader and is not part of the label.**

[Bracketed information is optional text]. Text separated by / denotes and/or options.

Highlighted text is new. ~~Strikethrough text is being deleted.~~

### **Efficacy Claims**

1. Kills/Eliminates weeds/grasses and [all/&]vegetation for up to 1 year/**yr**/12 months/52 weeks/365 days
2. Kills/Eliminates weeds/grasses and [all/&]vegetation
3. Kills/Eliminates weeds/grasses and [all/&]vegetation and prevents regrowth for up to 1 year/**yr**/12 months/52 weeks/365 days
4. Kills/Eliminates weeds/grasses and [all/&]vegetation and prevents regrowth
5. Continuous/Residual weed/grass/vegetation preventer/blocker/barrier/shield for up to 1 year/**yr**/12 months/52 weeks/365 days
6. Continuous/Residual weed/grass/vegetation preventer/blocker/barrier/shield
7. Prevents/Blocks/Controls weeds/grasses and [all/&]vegetation for up to 1 year/**yr**/12 months/52 weeks/365 days
8. Prevents/blocks/controls/stops new growth for up to 1 year/**yr**/12 months/52 weeks/365 days
9. Prevents/blocks/controls weeds/grasses and [all/&]vegetation
10. Keeps killing weeds for up to 1 year/**yr**/12 months/52 weeks/365 days
11. Kills existing weeds & prevents new ones for up to 1 year/**yr**/12 months/52 weeks/365 days
12. Kills weeds you see and/& ones you don't [see]
13. Kills weeds/grasses and [all/&]vegetation to the roots<sup>†</sup>
14. Kills [tough] weeds to the root(s)<sup>†</sup>
15. Kills the toughest weeds guaranteed<sup>†</sup>
16. Kills the root\* [guaranteed <sup>†</sup>]
17. Kills existing [tough] weeds to the root guaranteed<sup>†</sup>
18. Kills weeds/grasses/and [all/&]vegetation guaranteed<sup>†</sup>
19. Kills existing weeds and germinating seeds
20. [Guaranteed<sup>†</sup> to] kill(s) tough weeds to the root(s)\*
21. [Guaranteed<sup>†</sup> to] kill(s) the toughest weeds\*
22. [Guaranteed<sup>†</sup> to] kill(s) the root\*
23. [Guaranteed<sup>†</sup> to] kill(s) existing [tough] weeds to the root<sup>†</sup>
24. [Guaranteed<sup>†</sup> to] kill weeds<sup>†</sup>
25. Guaranteed<sup>†</sup> Kill
26. Guaranteed<sup>†</sup> results or your money back
27. Money back guarantee
28. Guaranteed<sup>†</sup> results
29. Satisfaction guaranteed or your money back<sup>†</sup>
30. Up to 1 year/**yr** control
31. Up to 1 year/**yr** (extended) weeds/[grass(es)]/[and/and all/&]/[vegetation] control
32. Ortho's most powerful weed killer
33. Weed control made easy
34. For outdoor use
35. Weed free [worry free]
36. Weed free/no weeds for up to 1 year/**yr**/12 months/52 weeks/365 days [with GC Concentrate X]
37. One application is a year-long vacation from weeds
38. [GC Concentrate X] send weeds on vacation with one application
39. Stops weeds [and grasses] from growing for up to 1-year/**yr**
40. Up to 1-year/**yr** weed and grass control
41. [Up to 1-year/**yr**] long-lasting [weed and grass control]
42. Works for up to 1-year/**yr**
43. It kills weeds and prevents any re-growth for up to one full year/**yr** with a single application

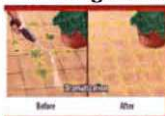
NOTE:

**Bold, italicized text is information for the reader and is not part of the label.**

[Bracketed information is optional text]. Text separated by / denotes and/or options.

Highlighted text is new. ~~Strikethrough text is being deleted.~~

- 44. Keeps prevents weeds and grasses from growing in cracks [and joints] in sidewalks, driveways and patios
- 45. Keeps weeds from growing [for up to 1 year/yr/ 12 months/52 weeks/365 days]
- 46. [GC Concentrate X] works two ways
- 47. Provides long-term weed [and grass] control
- 48. Untreated, Treated *Note to PM: image below can also be used for the "untreated/treated" claim*
- 49. Before, After
- \*when used as directed



**Formula Claims**

*Note to PM: Claims 50-51 may appear on any label panel for 6 months after the product is first sold or distributed.*

- 50. New
- 51. New/Now
- 52. Concentrate

**Weather & Speed**

- 53. Visible Results in 3 Hours/hrs
- 54. Visible results in 3 hours, works for 1 year/ yr/12 months/52 weeks/365 days
- 55. Fast acting
- 56. Fast acting formula works in 3 hours/hrs
- 57. Fast acting formula starts working immediately
- 58. Starts Working Immediately
- 59. Rainproof in 1 hour/hr
- 60. Control won't wash away after 1 hour/hr
- 61. [You will see] Weeds wilt/(turn brown in 3 hours/hrs
- 62. Turns weeds brown in 3 hours/hrs
- 63. Same day Results
- 64. Begins working in hours/hrs
- 65. See browning in 3 hours/hrs
- 66. Fast weed killer
- 67. Weeds start dying by/on contact
- 68. Kills by/on contact
- 69. Starts killing by/on contact
- 70. Knocks weeds down in 3 hours/hrs
- 71. Results in/Starts working in/Starts to kill in/Visible [See] Results in/Weeds [and Grasses] start dying in/Works to the root[s] in 3 hours/hrs
- 72. Same Day [Visible] Results
- 73. Speedy Results
- 74. Rainproof in hours [so you don't have to re-spray]

**Location**

- 75. Apply to/for use on driveways/sidewalks/fence lines/paver patios/walkways/gravel areas/rock [and/&] desert landscapes/under decks/parking areas/cleared dirt/sandy areas/hardscapes [and] along fences [and curbs].
- 76. Apply to/for use on driveways/sidewalks/fence lines/paver patios/walkways/gravel areas/rock [and/&] desert landscapes/under decks/parking areas/cleared dirt/sandy



**Bold, italicized text is information for the reader and is not part of the label.**

[Bracketed information is optional text]. Text separated by / denotes and/or options.

Highlighted text is new. ~~Strikethrough text is being deleted.~~

- areas)/[hardscapes] [and] [along fences (and curbs)].to kill/eliminate weeds/grasses and/& [all] vegetation and prevent/block control weeds/grasses and/& [all] vegetation
77. Use on driveways [and patios] to kill [and prevent] weeds [for up to 1-year /yr]
78. Use on driveways, sidewalks, patios, brick walks, gravel paths, fence lines to prevent weed growth [weeds from growing].

### **Promotional options**

79. Great Value
80. Value/Bonus [pack/size/buy/pak]
81. Club/Combo [pack/size/buy/pak]
82. X bottles [included]
83. Not for individual sale

### **Other**

84. Building a new [paver] patio? Use GC Concentrate X to kill/eliminate and prevent/block/control weeds/grasses and/& [all]/vegetation [for up to 1 year/ yr/12 months/52 weeks/365 days]
85. Building a new [paver] patio? (Use GC Concentrate X for year-long control)
86. Don't let weeds ruin your driveways / sidewalks / fence lines /paver patios/ walkways/ gravel areas/ rock [and/&] desert landscapes/ [under decks/ parking areas / cleared dirt/ sandy areas /hardscapes [and] along fences [and curbs]. GC Concentrate X kills / eliminates and prevents/blocks/controls weeds/grasses[and/& [all] vegetation] [for up to 1 year/ yr/12 months/52 weeks/365 days]
87. [Perfect to] keep your paver/patio weed-free
88. Relax with no weeds for a year
89. Enjoy a weed-free patio
90. For all your Outdoor Weed needs look to/for Ortho
91. Ortho has a solution for your Weed needs
92. Ortho can help solve your Weed Control Needs
93. Look to/for Ortho
94. For more Lawn and Garden Products Visit [www.ortho.com]

### **Applicator Claims**

95. Perfect/Ideal for mixing and applying in a tank sprayer
96. Easy to apply with a tank sprayer

### **Optional Instructions for Side Clip Tape**

- Peel Here Open Resealable Label for Directions and Restrictions
- Press to Reseal
- See inside booklet for details

**NOTICE:** To the extent consistent with applicable law, buyer assumes all risks of use, storage or handling of this product not in accordance with directions.

### **†The ORTHO® Guarantee**

If for any reason you, the consumer, are not satisfied with this product, mail us your original proof of purchase to obtain a full refund of your purchase price.

NOTE:

EPA Reg. No. 239-2762

***Bold, italicized text is information for the reader and is not part of the label.***

[Bracketed information is optional text]. Text separated by / denotes and/or options.

Highlighted text is new. ~~Strikethrough text is being deleted.~~

## Ortho & Your Environment

Your yard is a place for family and pets to enjoy. That's why Ortho® [subregistrant name] products are designed with care to provide effective solutions to weed problems. Follow instructions for appropriate usage, storage and disposal.

## Questions / Information [Questions or Comments]

1-800-225-2883 and/or [visit] [our website [www.ortho.com](http://www.ortho.com)]



©Year [Company Name]. World rights reserved.

Manufactured [by]/for]/[Sold by]/Distributed by]:

The Ortho Group

P.O. Box 190

Marysville, OH 43040

EPA Reg. No. 239-2762

EPA Est. No. XXX-XXX-X

[Superscript is first letter of lot number]

[Product of] [Made in] [Country Name] [USA]