



U.S. ENVIRONMENTAL PROTECTION AGENCY

Office of Pesticide Programs
Registration Division (7505P)
1200 Pennsylvania Ave., N.W.
Washington, D.C. 20460

EPA Reg. Number:

239-2759

Date of Issuance:

5/20/20

NOTICE OF PESTICIDE:

☒ Registration
☐ Reregistration
(under FIFRA, as amended)

Term of Issuance:

Unconditional

Name of Pesticide Product:

GC RTU

Name and Address of Registrant (include ZIP Code):

The Scotts Company d/b/a The Ortho Group
P.O.Box 190
Marysville, OH 43040

Note: Changes in labeling differing in substance from that accepted in connection with this registration must be submitted to and accepted by the Registration Division prior to use of the label in commerce. In any correspondence on this product always refer to the above EPA registration number.

On the basis of information furnished by the registrant, the above named pesticide is hereby registered under the Federal Insecticide, Fungicide and Rodenticide Act.

Registration is in no way to be construed as an endorsement or recommendation of this product by the Agency. In order to protect health and the environment, the Administrator, on his motion, may at any time suspend or cancel the registration of a pesticide in accordance with the Act. The acceptance of any name in connection with the registration of a product under this Act is not to be construed as giving the registrant a right to exclusive use of the name or to its use if it has been covered by others.

This product is unconditionally registered in accordance with FIFRA section 3(c)(5) provided that you:

1. Submit and/or cite all data required for registration/reregistration/registration review of your product when the Agency requires all registrants of similar products to submit such data.
2. The data requirements for storage stability and corrosion characteristics (Guidelines 830.6317 and 830.6320) are not satisfied. A one year study is required to satisfy these data requirements. You have 18 months from the date of registration to provide these data.

Signature of Approving Official:

Erik Kraft, Product Manager 24
Fungicide Herbicide Branch, Registration Division (7505P)

Date:

5/20/20

3. Make the following label changes before you release the product for shipment:
 - Revise the EPA Registration Number to read, “EPA Reg. No. 239-2759.”
4. Submit one copy of the revised final printed label for the record before you release the product for shipment.

Should you wish to add/retain a reference to the company’s website on your label, then please be aware that the website becomes labeling under the Federal Insecticide Fungicide and Rodenticide Act and is subject to review by the Agency. If the website is false or misleading, the product would be misbranded and unlawful to sell or distribute under FIFRA section 12(a)(1)(E). 40 CFR 156.10(a)(5) list examples of statements EPA may consider false or misleading. In addition, regardless of whether a website is referenced on your product’s label, claims made on the website may not substantially differ from those claims approved through the registration process. Therefore, should the Agency find or if it is brought to our attention that a website contains false or misleading statements or claims substantially differing from the EPA approved registration, the website will be referred to the EPA’s Office of Enforcement and Compliance.

If these conditions are not complied with, the registration will be subject to cancellation in accordance with FIFRA section 6. Your release for shipment of the product constitutes acceptance of these conditions. A stamped copy of the label is enclosed for your records. Please also note that the record for this product currently contains the following CSFs:

- Basic CSF dated 10/05/2018
- Alternate CSF A dated 10/05/2018
- Alternate CSF B dated 10/05/2018

If you have any questions, please contact Manjula Unnikrishnan by phone at 703-347-8520, or via email at unnikrishnan.majula@epa.gov

Enclosure

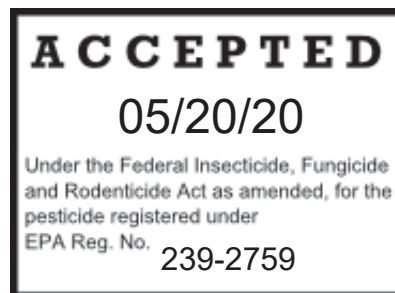
NOTE:

Bold, italicized text is information for the reader and is not part of the label.

[Bracketed information is optional text]. Text separated by / denotes and/or options.

EPA Reg. No. 239-ETLO

GC RTU



Active Ingredients:

Glufosinate Ammonium.....	0.5%
Pelargonic Acid and related fatty acids.....	2.0%
Other Ingredients:	<u>97.5%</u>
Total	100.0%

THIS PRODUCT CONTAINS:

0.0417 lb glufosinate ammonium per gallon or 0.5%
0.1669 lb pelargonic acid and related fatty acids per gallon

KEEP OUT OF REACH OF CHILDREN

CAUTION

See [back] [side] [other] [panel] [booklet] for directions for use.

NET CONTENTS: XX FL OZ (X GAL/QT/PT) XX [L/mL]

Bold, italicized text is information for the reader and is not part of the label.

[Bracketed information is optional text]. Text separated by / denotes and/or options.

FIRST AID

IF IN EYES: Hold eye open and rinse slowly and gently with water for 15-20 minutes. Remove contact lenses, if present, after first 5 minutes, then continue rinsing eye. Call a poison control center or doctor for treatment advice.

Have the product container or label with you when calling a poison control center or doctor, or going for treatment. You may also contact 1-877-465-5161 for emergency medical treatment information.

PRECAUTIONARY STATEMENTS

HAZARDS TO HUMANS & DOMESTIC ANIMALS

CAUTION: Causes moderate eye irritation. Avoid contact with eyes or clothing. Wash thoroughly with soap and water after handling and before eating, drinking, chewing gum, using tobacco, or using toilet

ENVIRONMENTAL HAZARDS

This product is toxic to plants. Drift and run-off may be hazardous to plants in water adjacent to treated areas. To protect the environment, do not allow pesticide to enter or run off into storm drains, drainage ditches, gutters or surface waters. Applying this product in calm weather when rain is not predicted for the next 24 hours will help to ensure that wind or rain does not blow or wash pesticide off the treatment area.

DIRECTIONS FOR USE:

It is a violation of Federal law to use this product in a manner inconsistent with its labeling.

RESTRICTIONS

- People and pets must not touch treated plants or enter treated areas until after spray has dried.
- **DO NOT** spray plants or grasses you like - they will die. Not for spot weed control in lawns since this product/GC RTU kills lawn grasses.
- **DO NOT** apply this product in a way that will contact any person or pet, either directly or through drift. Only the person applying this product may be in the area during application.
- **DO NOT** apply more than 1 gallon per 1350 sq ft (1.35 lbs glufosinate ammonium and 5.4 lb pelargonic acid and related fatty acids per acre) in a single application.
- **DO NOT** make more than 2 applications per area per year.
- **DO NOT** apply more than 2 gallons per 1350 sq ft (2.7 lbs glufosinate ammonium and 10.8 lb pelargonic acid and related fatty acids per acre) per year.
- Wait at least 45 days between applications of this product

WHERE TO APPLY/USE

- GC RTU/this product is a pre-mixed, ready-to-use product formulated for "spot" treatments to kill weeds and grass around trees, shrubs, fences, walks, patios, driveways, sidewalks, in flower beds, around houses, buildings, wooded lots, storage and recreational areas.
- GC RTU/this product will injure or kill all green vegetation contacted. It will kill most annual and perennial weeds, grasses and other unwanted vegetation.

HOW TO APPLY

[Optional text for Pull 'N Spray, Battery Operated Sprayer, and Pump N Go Sprayer Devices]

- Follow illustrations and instructions [Insert location of instructions/illustrations] to ready (prime) the sprayer.

[Trigger Sprayers only]

- Adjust nozzle to the desired spray setting.

[All Sprayers]

- Spray the weeds you want to kill until thoroughly wet, but avoid spray run-off.

Bold, italicized text is information for the reader and is not part of the label.

[Bracketed information is optional text]. Text separated by / denotes and/or options.

- Repeat treatments may be necessary to control plants generating from underground parts or seed.
- When spot treating [weeds] around desirable plants, avoid spraying during windy conditions. If applications are being made in areas adjacent to desirable plants, shield plants from drift with a [sheet/ piece] of cardboard or plastic to prevent spray from contacting the foliage. If desirable plants are accidentally sprayed, rinse off immediately with water [or cut off treated area].

WHEN TO APPLY/USE

- Apply when weeds are actively growing. **Alternative text:** [Use anytime weeds [and grasses] are actively growing.]
- For best results, apply during warm, sunny weather above 60° F [to accelerate systemic movement from foliage to roots]. Weed control may be reduced when applications are made to weeds under stress due to drought or cool temperatures.
- [Apply/ Spray] when air is calm to prevent drift to desirable plants.
- RAINPROOF [Protection:]: Rain or watering [10] minutes after application will NOT wash away effectiveness.

Alternative Text: GC RTU/this product is Rainproof in [10] minutes.]

[Apply when weeds are small and before seeds form.]

[Established [perennial/ hard to kill] weeds may require a repeat application.]

Optional Section:

WHEN TO REPLANT

- This product will not interfere with seed germination or root growth of desirable plants. Treated areas can be reseeded or replanted 4 days after application or when weeds are dead.

Directions For Use Options Based On Applicator

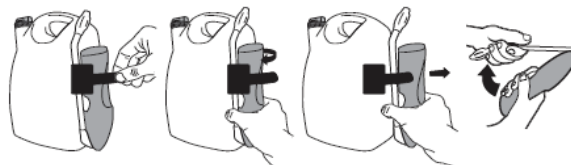
Option 1 - Battery Sprayer [Comfort] Wand Applicator

[How To Apply/Use]

[Applicator (Device) (Applicator Name) Directions/Instructions]

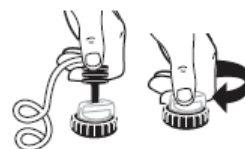
Prep [Wand]

1. Remove sprayer [Applicator Name] from holster/holder/clip/lug side of bottle.
2. [Remove [color] pull strip to activate batteries].
3. Unfold [Flip Open] [Applicator Name] [wand] until it clicks [locks] into position.
4. [Extend] [wand/applicator] [fully]



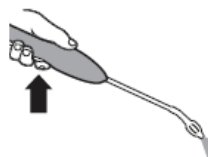
Connect

1. Unwrap [uncoil] hose and insert [color] hose connector into [color] spout/knob/lid/opening on [bottle] cap [until it clicks].
2. [Flip up [color] spout / knob until fully upright.] [Twist spout/knob to "ON".] [Pull spout up.]



Spray

1. Turn sprayer nozzle to desired spray [pattern].
2. [Slide [color] switch on trigger to "Unlock" [illustration]].
3. Press trigger to spray.



Finish

1. [Turn nozzle to "OFF" [X]].

NOTE:

EPA Reg. No. 239-ETLO

Bold, italicized text is information for the reader and is not part of the label.

[Bracketed information is optional text]. Text separated by / denotes and/or options.

2. [Slide [color] switch on trigger to “Lock” [illustration]].
3. [Push /turn / twist cap / knob / spout to “OFF” [X]]/ [Flip spout closed.]
4. Fold [Applicator Name] wand closed and place sprayer back in holster/holder/clip/lug side of bottle.

Alternate illustrations for the [Comfort] Wand Applicator

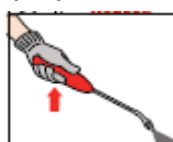
Prep [Wand]



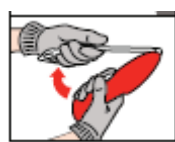
Connect



Spray



Finish



Note to PM: The illustrations may or may not appear on the final printed label. The use of illustrations is dependent upon the size of the packaging.

Important Use Information: **DO NOT** submerge in water. When storing sprayer for long periods, remove batteries.

[To replace batteries: See marked diagram inside battery compartment. [The [Comfort] Wand® may be reused with GC RTU refill bottle. Read and follow instructions in Reuse Directions to reuse the applicator.]

Option 2 - Pull ‘N Spray® II

[How To Apply/Use]

[Applicator (Device) (Applicator Name) Directions/Instructions]

Spray

1. Remove sprayer from holster / holder /clip /lug side of bottle.
2. Unwrap [uncoil] hose and insert [color] hose connector into [color] spout on [bottle] cap / knob /lid / opening until it clicks.
3. [Flip up [color] spout until fully upright.] Twist spout/knob to “ON” [Pull spout up.]
4. Twist nozzle at end of sprayer to desired spray [pattern].
5. Point sprayer away from body. Slowly pull ring at bottom of sprayer handle until it stops, and hold for two (2) seconds to allow product to fill [the] sprayer.
6. Press trigger to spray.
7. Spray weed[s] until wet.

Finish

1. Turn sprayer nozzle to “OFF” [X]
2. [Push /turn / twist cap / knob / spout to “OFF” [X]]/ [Flip spout closed.]
3. **DO NOT DISCONNECT HOSE CONNECTOR FROM SPOUT/ CAP/ KNOB/ LID/ OPENING**
4. Place sprayer back into holster / holder /clip /lug side of bottle.

[How To Apply/Use]

Twist nozzle at end of sprayer to desired spray pattern. Point sprayer away from body. Slowly pull ring at bottom of sprayer handle until it stops, and hold for two (2) seconds to allow product to fill [the] sprayer. Press trigger to spray.

Bold, italicized text is information for the reader and is not part of the label.

[Bracketed information is optional text]. Text separated by / denotes and/or options.

Spray weed until wet.

Option 3 – Other Pump Style Applicator [Quick Pump]

[How To Apply/Use]

[Applicator (Device) (Applicator Name) Directions/Instructions]

PREP [SPRAYER]

1. Remove sprayer from holster and pull hose from storage compartment.
2. Turn pump handle clockwise/counterclockwise to make sure pump is tight [and push pop-up pressure indicator completely down] before pumping.
3. Turn pump handle clockwise/counterclockwise to tighten, then slightly turn handle clockwise/counterclockwise to release handle for pumping.
4. [Pump sprayer] [until pressure indicator pops up about an inch signaling it is ready to spray.] Turn pump handle clockwise/counterclockwise [one-quarter turn] to secure handle for carrying.

SPRAY

1. Spray by pushing down lever on spray handle.
2. Rotate nozzle tip to adjust spray from stream to gentle mist.
3. For continuous spray, push lever down and slide forward to lock. Pull back to release.

FINISH

1. Slowly turn pump handle clockwise/counterclockwise to untighten and release pressure [or turn pressure relief valve clockwise until it snaps; once pressure is released, continue to turn until closed.]
2. Then turn back clockwise/counterclockwise to retighten handle.
3. Push hose back into storage compartment and put sprayer back in holster [holder].

Option 4 – Trigger Sprayer

[How To Apply/Use]

[Applicator (Device) (Applicator Name) Directions/Instructions]

HOW TO USE/APPLY:

Spray

1. Turn sprayer nozzle to desired spray.
2. Squeeze trigger repeatedly to spray.

Finish

1. Turn sprayer nozzle to “OFF” [X]

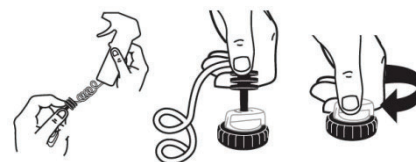
Option 5 – Conventional Trigger Large RTU

[Applicator (Device) (Applicator Name) Directions/Instructions]

HOW TO USE/APPLY:

Spray

1. Remove sprayer from bottle by [sliding/pulling] sprayer up.
2. Unwrap [uncoil] hose and insert [color] hose connector into [color] spout on [bottle] cap /knob /lid/ opening until it clicks.
3. [Flip up [color] spout until fully upright] /[Twist /turn spout/knob to “ON”]/[Pull spout up].



Bold, italicized text is information for the reader and is not part of the label.

[Bracketed information is optional text]. Text separated by / denotes and/or options.

4. Turn sprayer nozzle to desired spray [pattern].
5. Squeeze trigger repeatedly to spray.

Finish

1. Turn/twist sprayer nozzle to "OFF" [X].
2. [Push /turn / twist cap / knob / spout to "OFF" [X]]/ [Flip spout closed.]
3. **DO NOT** DISCONNECT HOSE CONNECTOR FROM SPOUT/CAP/KNOB/OPENING.
4. Place sprayer back into the holster/holder/clip/lug side of bottle.

[Optional illustrations may be used in conjunction with the above steps]

Optional [Reuse and] Refill Directions

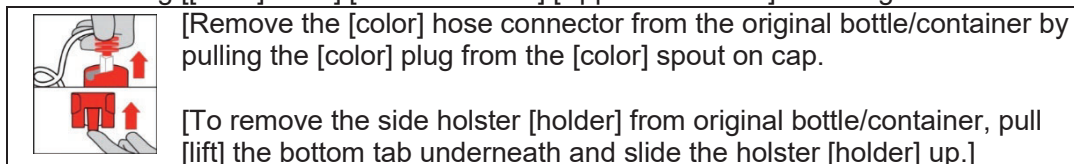
REFILL: This container may be refilled with [GC RTU]. To refill, follow instructions on refill container. **DO NOT** add water.

REFILL: This container may be refilled with [GC RTU]. To refill pour [GC RTU] into container. [**DO NOT** add water.]

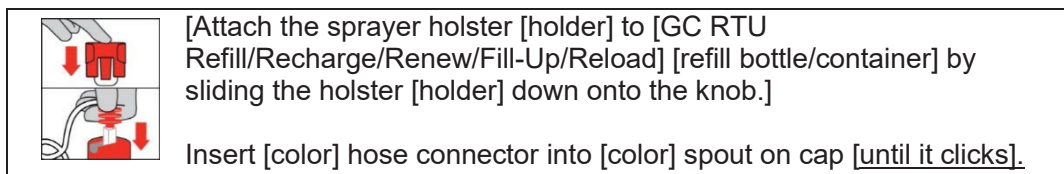
REFILL/REUSE DIRECTIONS

How to attach [applicator name] [wand] to [GC RTU] [Refill/Recharge/Renew/Fill-Up/Reload] [refill bottle/container]:

Removing [[color] hose]/[Comfort Wand]/[Applicator Name] from original bottle/container:



Adding [[color] hose]/[Comfort Wand]/[Applicator Name] to [GC RTU] Refill/Recharge/Renew/Fill-Up/Reload]:



[Optional illustrations may be used in conjunction with the above steps]

How to refill [Quick Pump] [Applicator Name]:[using/with]:

[1.33 Gallon Ready-To-Use Refill]/ [GC RTU] Refill/Recharge/Renew/Fill-Up/Reload [refill bottle/container]:

1. Remove pump handle on Quick Pump/Applicator Name by twisting it counterclockwise.
2. Remove cap from [GC RTU Refill/Recharge/Renew/Fill-Up/Reload] / [refill bottle/container].
3. Pour product carefully and directly into [Quick Pump/Applicator Name] container. **DO NOT** fill above 2²/₃/₄" from top of container. **DO NOT** add water.
4. Secure pump handle back on container by twisting it clockwise until tight.

Pesticide Storage and Disposal Options Based On Applicator

STORAGE AND/ & DISPOSAL

PESTICIDE STORAGE: Store product in original container in a safe place. Protect from freezing.

PESTICIDE DISPOSAL AND CONTAINER HANDLING:

Non-refillable container. Do not reuse or refill this container. **If empty:** Place in trash or offer for recycling if available. **If partly filled:** Call your local solid waste agency for disposal instructions. Never place unused product down any indoor or outdoor drain.

Option 1 – [Battery Sprayer] [Comfort] Wand Applicator

STORAGE AND/ & DISPOSAL [Illustration] [Icon]

PESTICIDE STORAGE: Store product in original container in a safe place. Protect from freezing.

PESTICIDE DISPOSAL AND CONTAINER HANDLING: Non-refillable container. Do not reuse or refill this container. **If empty:** Place in trash or offer for recycling if available. **If partly filled:** Call your local solid waste disposal agency for disposal instructions. Never place unused product down any indoor or outdoor drain.

Option 1 pesticide disposal & container handling for refill containers

PESTICIDE DISPOSAL AND/ & CONTAINER HANDLING: [Comfort Wand/Applicator Name can be reused with GC RTU Refill/Recharge/Renew/Fill-Up/Reload [bottle/container]. Follow instructions in the REUSE/ REFILL Directions section when reusing [applicator name]. **If empty:** If you do not want to refill this container, place in trash or offer for recycling if available. **If partly filled:** Call your local solid waste agency for disposal instructions. Never place unused product down any indoor or outdoor drain.

Option 2 – Pull ‘N Spray® II

STORAGE AND/ & DISPOSAL [Illustration] [Icon]

PESTICIDE STORAGE: Completely discharge/dispense product in sprayer prior to storage. Store product in original container in a safe place. Protect from freezing.

PESTICIDE DISPOSAL AND CONTAINER HANDLING: Non-refillable container. Do not reuse or refill this container. **If empty:** Place in trash or offer for recycling if available. **If partly filled:** Call your local solid waste disposal agency for disposal instructions. Never place unused product down any indoor or outdoor drain.

Option 3 – [Other Pump Style Applicators] [Refillable Container] [Quick Pump]

STORAGE AND/ & DISPOSAL [Illustration] [Icon]

PESTICIDE STORAGE: Slowly turn the pump handle clockwise/counterclockwise to untighten and release pressure, then turn back clockwise/counterclockwise to retighten the handle. Push the hose back into the storage compartment and put the wand back in holster. Store product in original container in a safe place. Protect from freezing.

PESTICIDE DISPOSAL AND CONTAINER HANDLING: Do not reuse or refill this container [unless the directions for use allow refill according to the directions contained on the REFILL section. See the REFILL section for details]. **If empty:** Place in trash or offer for recycling if available. **If partly filled:** Call your local solid waste disposal agency for disposal instructions. Never place unused product down any indoor or outdoor drain.

NOTE:

EPA Reg. No. 239-ETLO

Bold, italicized text is information for the reader and is not part of the label.

[Bracketed information is optional text]. Text separated by / denotes and/or options.

Options 4 and 5 – Trigger sprayer

STORAGE AND DISPOSAL [Illustration] [Icon]

PESTICIDE STORAGE: To be stored in original container and placed in areas inaccessible to children.

PESTICIDE DISPOSAL AND/CONTAINER HANDLING: Nonrefillable container. Do not reuse or refill this container. **If empty:** Place in trash or offer for recycling if available. **If partly filled:** Call your local solid waste agency for disposal instructions. Never place unused product down any indoor or outdoor drain.

NOTICE: To the extent consistent with applicable law, buyer assumes all risks of use, storage or handling of this product not in accordance with directions.

The ORTHO® Guarantee

If for any reason you, the consumer, are not satisfied with this product, mail us your original proof of purchase to obtain a full refund of your purchase price.

Subregistrant Guarantee

If for any reason you are not satisfied after using this product, simply send us original proof of purchase and we will refund the purchase price.

Ortho & Your Environment

Your yard is a place for family and pets to enjoy. That's why Ortho® [subregistrant name] products are designed with care to provide effective solutions to weed problems. Follow instructions for appropriate usage, storage and disposal.

OPTIONAL MARKETING CLAIMS

The following Product Facts format is optional and the information may appear inside or outside of a box. Appropriate formula and company specific information will be inserted on Final Printed Label to replace "X"

[Product Facts:]

Kills [all types of] weeds & grasses

Acts on Contact

See results in 1 hour

Absorbs on Contact

Starts Working Immediately

Rainproof in 10 minutes [For/use on] Patios*, landscape beds*, gardens*

WHERE TO USE

- [Fence Lines/ Along Fences]
- [Driveways & Walkways/ Patios*]
- [Tree Rings/ Around Trees]
- [Flower Beds/ Landscaped Beds]
- [Edging]

*apply directly to weeds

Bold, italicized text is information for the reader and is not part of the label.

[Bracketed information is optional text]. Text separated by / denotes and/or options.

Efficacy Claims

1. Kills/Eliminates weeds/[grass(es)]
 2. Absorbs/ed into both broadleaf and grassy weeds
 3. Absorbs on contact, starts working immediately
 4. Absorbed through the leaves, [it/GC RTU/this product] goes/moves all the way to the root for a total kill [on weeds you directly spray]
 5. Approved for most [many] landscape and garden uses
 6. Before [live weed]
 7. After [dead weed]
 8. Begins absorbing on contact
 9. Begins to work in hours
 10. Begins working in hours
 11. Completely kills even the toughest weeds and grasses
 12. Dead Weeds Guaranteed [or Your Money Back]
 13. Does not have soil activity
 14. For weed control - kills weeds and grasses in 1 [to 2] week/s - roots and all
 15. Got Tough Weeds - Get [GC RTU]
 16. Guaranteed (we guarantee it) [qualify guarantee]
 17. Guaranteed Satisfaction* [Open booklet for details.]
 18. Ideal for killing unwanted weeds and grasses [throughout your yard]. Use along fences; in cracks of walks, drives and patios; and around flower beds, trees and shrubs
 19. Kills almost all [annual and perennial] weeds, grasses and other unwanted plants
 20. Kills existing weeds only, no residual [herbicidal] activity in soil
 21. Kills [Poison Ivy/ Poison Oak/ Poison Sumac/ Wild Blackberry]
 22. Kills the roots so treated weeds don't come back
 23. Kills the root[s] [so weeds don't come back] [first time, every time] [guaranteed] [qualify guarantee]
 24. Kills [to] the roots [Guaranteed[!/*]] [qualify guarantee]
 25. Kills even the toughest weeds
 26. Kills [the toughest weeds and grasses to] the root so [weeds/ they] don't come back
 27. Kills the roots of [both] broadleaf and grassy weeds
 28. Kills the weed you see and the root you don't
 29. Kills Tough Weeds [& Grasses] [to the Root]
 30. Kills unwanted weeds [and grasses] [roots and all]
 31. Kills weeds [and grasses] [clear down to the root] [1-2 weeks] [roots and all]
 32. Kills weeds [and unwanted grasses] - roots and all
 33. Kills weeds clear down to the root, 1st time, every time so weeds don't come back - guaranteed [qualify guarantee]
 34. Kills weeds dead
 35. [Kills/ Spray] weeds in flower beds and around fences, trees, shrubs, driveways, walkways and shrubs, in and around fences, patios, paths, sidewalk cracks, walkways.
 36. Kills weeds in flowerbeds, around trees, shrubs and fences, and on patios, paths, sidewalks, sidewalk cracks, walkways, driveways, and other areas in your yard
 37. Kills weeds and grasses in - Patios - Driveways - Sidewalks - Ornamental Gardens and other non-lawn areas
 38. Kills weeds, roots and all
 39. Kills what you directly spray, no residual [herbicidal] activity in soil
- *when used as directed



Formula Claims

Note to PM: claims 40 and 41 may appear on any label panel for 6 months following commercial introduction

40. New
41. New/Now

Bold, italicized text is information for the reader and is not part of the label.

[Bracketed information is optional text]. Text separated by / denotes and/or options.

Weather & Speed

42. Visible Results in [1] Hour
43. Fast acting
44. Fast acting formula works in [1] hour
45. Fast acting formula starts working immediately
46. Fast acting. See results in hours
47. Starts Working Immediately
48. Rainproof in 10 minutes
49. Rainproof once dry
50. Rainproof once spray has dried
51. Control won't wash away after 10 minutes
52. [You will see] Weeds wilt/turn brown in [1] hour
53. Turns weeds brown in [1] hour
54. Same day Results
55. Begins working in hours
56. See browning in [1] hour
57. Fast weed killer
58. Weeds start dying by/on contact
59. Kills by/on contact
60. Starts killing by/on contact
61. Knocks down weeds within [1] hour
62. Results in/Starts working in/Starts to kill in/Visible [See] Results in/Weeds [and Grasses] start dying in/Works to the root[s] in [1] hour
63. Same Day [Visible] Results
64. Speedy Results
65. Rainproof in hours [so you don't have to re-spray]

Location

Note to PM: any combination of use sites may be used on the artwork for claims 68 to 72.

66. Apply to /for use on /driveways /sidewalks /fence lines /paver patios /walkways /gravel areas /rock [and/&] desert landscapes /under decks /parking areas /cleared dirt /sandy areas /hardscapes and along fences [and curbs].
67. Apply to /for use on /driveways /sidewalks /fence lines /paver patios /walkways /gravel areas /rock [and/&] desert landscapes /under decks /parking areas /cleared dirt /sandy areas /hardscapes and along fences [and curbs] to kill/eliminate weeds/[grass(es)]
68. Apply to /for use on /driveways /sidewalks /fence lines /paver patios /walkways /gravel areas /rock [and/&] desert landscapes /under decks /parking areas /cleared dirt /sandy areas /hardscapes and along fences [and curbs] to kill/eliminate weeds/grasses and& [all]/vegetation and prevent/block/control weeds/grasses
69. Ideal for killing unwanted weeds and grasses on /driveways /sidewalks /fence lines /paver patios /walkways /gravel areas /rock [and/&] desert landscapes /under decks /parking areas /cleared dirt /sandy areas /hardscapes and along fences [and curbs].
70. Keeps driveways /sidewalks /fence lines /paver patios /walkways /gravel areas /rock [and/&] desert landscapes /under decks /parking areas /cleared dirt /sandy areas /hardscapes and along fences [and curbs] clear [of weeds].
71. Use on driveways [and patios] to kill weeds
72. Ideal [great] for use on driveways, sidewalks, patios, brick walks, gravel paths, fence lines

Promotional options

73. Great Value

NOTE:

EPA Reg. No. 239-ETLO

Bold, italicized text is information for the reader and is not part of the label.

[Bracketed information is optional text]. Text separated by / denotes and/or options.

- 74. Value/Bonus [pack/size/buy/pak]
- 75. Club/Combo pack/pak/size
- 76. X bottles [included]
- 77. Not for individual sale

Other

- 78. Building a new (paver) patio? Use GC RTU to kill/eliminate weeds/[grass(es)]

Applicator Claims

- 79. Change the way you spray
- 80. Cut your time spent spraying in half
- 81. Extended Reach
- 82. Improved [Applicator]!/Improved [Application]!
- 83. The easier [easy] way to spray
- 84. You're always ready to spray
- 85. Ready-to-Use
- 86. No mixing, no measuring and no messy clean up
- 87. No mixing
- 88. Simple and easy
- 89. Targets weeds in tight places
- 90. [Comes with] Reusable [Comfort/Extended/High Flow/Dual Tip] Wand
- 91. [Ready-to-use] Refill

Optional Instructions for Resealable Labeling

- Peel Here Open Resealable Label for Directions and Precautions
- Press to Reseal. See inside booklet for details.

Questions / Information [Questions and/or Comments]

1-800-225-2883 [phone icon]

[Or] Visit our website

www.ortho.com [computer icon]

©Year [Company Name]. World rights reserved.

Manufactured [by]/for/[Sold by]/Distributed by]:

The Ortho Group

P.O. Box 190

Marysville, OH 43040

EPA Reg. No. 239-NEW

EPA Est. No. XXX-XXX-X

Superscript is first letter of lot number

[Product of] [Made in] [Country Name] [USA]