



U.S. ENVIRONMENTAL PROTECTION AGENCY
 Office of Pesticide Programs
 Registration Division (7505P)
 1200 Pennsylvania Ave., N.W.
 Washington, D.C. 20460

EPA Reg. Number:

239-2741

Date of Issuance:

8/23/17

NOTICE OF PESTICIDE:

Registration
 Reregistration
 (under FIFRA, as amended)

Term of Issuance:

Conditional

Name of Pesticide Product:

Ortho FFV & Indoor RTU

Name and Address of Registrant (include ZIP Code):

Chris Zemanek
 The Scotts Company LLC
 1411 Scottslawn Road
 Marysville, OH 43041

Note: Changes in labeling differing in substance from that accepted in connection with this registration must be submitted to and accepted by the Registration Division prior to use of the label in commerce. In any correspondence on this product always refer to the above EPA registration number.

On the basis of information furnished by the registrant, the above named pesticide is hereby registered under the Federal Insecticide, Fungicide and Rodenticide Act.

Registration is in no way to be construed as an endorsement or recommendation of this product by the Agency. In order to protect health and the environment, the Administrator, on his motion, may at any time suspend or cancel the registration of a pesticide in accordance with the Act. The acceptance of any name in connection with the registration of a product under this Act is not to be construed as giving the registrant a right to exclusive use of the name or to its use if it has been covered by others.

This product is conditionally registered in accordance with FIFRA section 3(c)(7)(C). You must comply with the following conditions:

1. Submit and/or cite all data required for registration/reregistration/registration review of your product under FIFRA when the Agency requires all registrants of similar products to submit such data.

Signature of Approving Official:

Michael Wagman, Product Manager 4
 IVB 1, Registration Division (7505P)

Date:

8/23/17

2. You are required to comply with the data requirements described in the DCI and EDSP Orders identified below:
 - a. Pyrethrins GDCI-069001-1058
 - b. Pyrethrins GDCI-069001-1195
 - c. Pyrethrins GDCI-069001-1290
 - d. Piperonyl Butoxide (PBO) GDCI-067501-1063
 - e. PBO EDSP-067501-95
 - f. PBO EDSP-067501-96
 - g. PBO EDSP-067501-99
 - h. PBO EDSP-067501-100

You must comply with all of the data requirements within the established deadlines. If you have questions about the Generic DCI or EDSP Order listed above, you may contact the Chemical Review Manager in the Pesticide Reevaluation Division:

<http://iaspub.epa.gov/apex/pesticides/f?p=chemicalsearch:1>

3. Make the following label changes before you release the product for shipment:
 - Revise the EPA Registration Number to read, “EPA Reg. No. 239-2741.”
4. Submit one copy of the final printed label for the record before you release the product for shipment.

Should you wish to add/retain a reference to the company’s website on your label, then please be aware that the website becomes labeling under the Federal Insecticide Fungicide and Rodenticide Act and is subject to review by the Agency. If the website is false or misleading, the product would be misbranded and unlawful to sell or distribute under FIFRA section 12(a)(1)(E). 40 CFR 156.10(a)(5) list examples of statements EPA may consider false or misleading. In addition, regardless of whether a website is referenced on your product’s label, claims made on the website may not substantially differ from those claims approved through the registration process. Therefore, should the Agency find or if it is brought to our attention that a website contains false or misleading statements or claims substantially differing from the EPA approved registration, the website will be referred to the EPA’s Office of Enforcement and Compliance.

If you fail to satisfy these data requirements, EPA will consider appropriate regulatory action including, among other things, cancellation under FIFRA section 6(e). Your release for shipment of the product constitutes acceptance of these conditions. A stamped copy of the label is enclosed for your records. Please also note that the record for this product currently contains the following CSFs:

- Basic CSF dated 03/14/2017

If you have any questions, please contact Helen Hull-Sanders by phone at 703-347-0243, or via email at hull-sanders.helen@epa.gov.

Enclosure

Bold, italicized text is information for the reader and is not part of the label.

EPA File Symbol 239-NEW

[Bracketed information is optional text.] Text separated by / denotes and/or options.

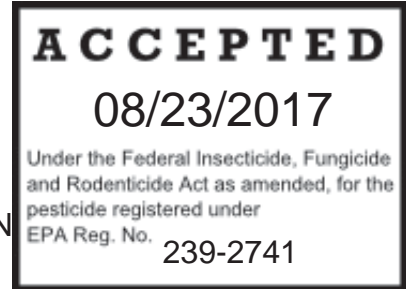
Master label formatted according to EPA Smart label style guide – items on the first page does not mean they will appear on front panel

ORTHO FFV & INDOOR RTU

ACTIVE INGREDIENTS:

Pyrethrins	0.02%
*Piperonyl butoxide	0.20%
OTHER INGREDIENTS	99.78%
	100.00%

*(butylcarbityl) (6-propylpiperonyl) ether and related compounds



**KEEP OUT OF REACH OF CHILDREN
CAUTION**

See back [panel/label/booklet] for additional precautionary statements

Manufactured for / Sold by/Distributed By:

The ORTHO Group
P.O. Box 190
Marysville, OH 43040
EPA Reg. No. 239-NEW
EPA Est. XXX-XX-X

[Superscript is first letter of lot number]

Alternate Brand Names:

- Ortho Ready-To-Use Fruit, Flower, and Vegetable Insect Killer₁
- Ortho Fruit, Flower, and Vegetable Ready To Use₁ Insect Killer
- Ortho Fruit, Flower, and Vegetable Insect Killer Ready-to-Use
- Ortho Garden Defense Rose Fruit, Flower, and Vegetable Insect Killer
- Ortho Ready-To-Use Fruit and Vegetable Insect Killer₁
- Ortho Fruit and Vegetable Ready To Use₁ Insect Killer
- Ortho Fruit and Vegetable Insect Killer Ready-to-Use
- Ortho Garden Defense Fruit and Vegetable Insect Killer
- Ortho Fruit, Flower, and Vegetable Insect Killer
- Ortho Garden Defense Insect Killer
- Ortho Garden Shield Insect Killer
- Ortho Garden Shield Defense [for Fruits and Vegetables/Vegetable Gardens]
- Ortho Insect Killer For Flower[s], Fruit[s], and Vegetable[s]
- Ortho Insect Killer For Fruits and Vegetables/Vegetables and Fruits
- Ortho Pest Killer For Flower[s], Fruits[s] and Vegetable[s]/Fruit[s], Vegetable[s] and Flower[s]/Vegetable[s], Fruit[s] and Flower[s]
- Ortho Pest Killer For Fruit[s] and Vegetable[s]/Vegetable[s] and Fruit[s]

NET CONTENTS: 32 FL OZ/1 QT (946 mL) X FL OZ/X QT (X mL)

FIRST AID	
IF SWALLOWED:	<ul style="list-style-type: none"> • Immediately call a poison control center or doctor. • Do not induce vomiting unless told to do so by a poison control center or doctor. • Have person sip a glass of water if able to swallow. • Do not give anything by mouth to an unconscious person.
IF ON SKIN OR CLOTHING:	<ul style="list-style-type: none"> • Take off contaminated clothing. • Rinse skin immediately with plenty of water for 15-20 minutes. • Call a poison control center or doctor for treatment advice.
Have the product container or label with you when calling a poison control center or doctor, or going for treatment. For information regarding medical emergencies or pesticide incidents, call 1-800-225-2883.	

PRECAUTIONARY STATEMENTS

HAZARDS TO HUMANS AND DOMESTIC ANIMALS

CAUTION: Harmful if swallowed. Harmful if absorbed through skin. Avoid contact with skin, eyes, or clothing. Wash thoroughly with soap and water after handling and before eating, drinking, chewing gum, using tobacco or using the toilet. Remove and wash contaminated clothing before reuse.

ENVIRONMENTAL HAZARDS

This pesticide is toxic to aquatic organisms, including fish and invertebrates. To protect the environment, do not allow pesticide to enter or run off into storm drains, drainage ditches, gutters or surface waters. Applying this product in calm weather when rain is not predicted for the next 24 hours will help to ensure that wind or rain does not blow or wash pesticide off the treatment area.

This product is highly toxic to bees and other pollinating insects exposed to direct treatment on blooming crops or weeds. Do not apply this product or allow it to drift to blooming crops or weeds while bees and other pollinating insects are actively foraging the treatment area.

PHYSICAL OR CHEMICAL HAZARDS

Do not use this product in or on electrical equipment because of shock hazard.

DIRECTIONS FOR USE

It is a violation of Federal Law to use this product in a manner inconsistent with its labeling.

SHAKE WELL BEFORE USING.

RESTRICTIONS

- Do not allow adults, children, or pets to enter the treated area or use treated articles until sprays have dried.
- Do not apply this product in a way that will contact adults, children, or pets, either directly or through drift.
- Do not water the treated area to the point of runoff.*
- Do not wet articles or plants to point of runoff or drip.
- Remove pets, birds, and cover fish aquariums before spraying.
- Do not make applications during rain.*
- Remove or cover exposed food and drinking water before application.
- Remove or cover dishes, utensils, food processing equipment, and food preparation surfaces, or wash them before use.
- This product is not for use on plants being grown for sale or other commercial use.
- Do not apply if wind causes drift*
- Do not reapply within 3 days except under extreme pest pressure. In case of extreme pest pressure, Do not reapply within 24 hours
- Do not apply when bees are active in the area*

NOTE TO PM: * restrictions will be omitted if market label only consists of indoor use sites.

All outdoor applications must be limited to spot or crack-and-crevice treatments only, except for the following permitted use:

- Application to vegetation.

Application is prohibited directly into sewers or drains, or to any area like a gutter where drainage to sewers, storm drains, water bodies, or aquatic habitat can occur. Do not allow the product to enter any drain during or after application.

Note to PM: Below is Storage & Disposal For Non-Refillable containers

STORAGE AND DISPOSAL

PESTICIDE STORAGE: Keep from freezing. To be stored in original container and placed in areas inaccessible to children.

PESTICIDE DISPOSAL AND CONTAINER HANDLING: Nonrefillable container. Do not reuse or refill this container. **If empty:** Place in trash or offer for recycling if available. **If partly filled:** Call your local solid waste agency for disposal instructions. Never place unused product down any indoor or outdoor drain.

Note to PM: Below is Storage & Disposal For Refillable Containers

STORAGE AND DISPOSAL

PESTICIDE STORAGE: Keep from freezing. To be stored in original container and placed in areas inaccessible to children.

PESTICIDE DISPOSAL AND CONTAINER HANDLING: [Applicator Name] can be reused with [Product Name refill bottle/container]. Follow instructions in the Reuse Directions when reusing [applicator name]. Nonrefillable container. Do not reuse or refill this container. **If empty:** Place in trash or offer for recycling if available. **If partly filled:** Call your local solid waste agency for disposal instructions. Never place unused product down any indoor or outdoor drain.

Bold, italicized text is information for the reader and is not part of the label.

[Bracketed information is optional text.] Text separated by / denotes and/or options.

Master label formatted according to EPA Smart label style guide – items on the first page does not mean they will appear on front panel

Product Application Instructions

NOTE TO PM: For all Options below Graphics illustrating a step or group of steps may appear on final printed label

NOTE TO PM: Spray Pattern Descriptor is any word used to describe the pattern such as flat, fan, coarse, or fine.

Option 1: Conventional Trigger Small RTU

[Applicator (Device) (Applicator Name) Directions/Instructions]

HOW TO USE:

[Spray]

1. Turn sprayer nozzle to desired spray/spray pattern descriptor [spray pattern icon].
2. Squeeze trigger repeatedly to spray.

[Finish]

1. [Turn sprayer nozzle to "OFF" / X.]

Option 2: Conventional Trigger Large RTU

[Applicator (Device) (Applicator Name) Directions/Instructions]

HOW TO USE:

Spray

1. Remove sprayer from bottle [by sliding/pulling sprayer up].
2. [Unwrap/uncoil/extend hose and] insert [color] hose connector into [color] spout/opening/lid on bottle cap [until it clicks].
3. [Flip up [color] spout until fully upright] / [Twist spout/lid/cap to "ON"] / [Pull spout/lid/cap up].
4. Turn sprayer nozzle to desired spray/spray pattern descriptor [spray pattern icon].
5. Squeeze trigger repeatedly to spray.

Finish

1. [Turn sprayer nozzle to "OFF"/X.]
2. DO NOT DISCONNECT HOSE CONNECTOR FROM SPOUT/CAP/LID/OPENING.
3. [Place sprayer back into holster/holder.]

Option 3 - Pull 'N Spray® II

[Applicator (Device) (Applicator Name) Directions/Instructions]

HOW TO USE:

Spray

1. Remove sprayer from holster/holder.
2. [Unwrap/uncoil/extend hose and] insert [color] hose connector into [color] spout/opening/lid on bottle cap [until it clicks].
3. [Flip up [color] spout until fully upright]/[Twist spout/lid/cap to "ON"] [Pull spout/cap/lid up].
4. Turn sprayer nozzle to desired spray/spray pattern descriptor [spray pattern icon].
5. Point sprayer away from body. Slowly pull ring at bottom of sprayer until it stops, and hold for two [2] seconds to fill sprayer.
6. Press trigger to spray.

Finish

1. [Turn sprayer nozzle to "OFF"/X.]
2. DO NOT DISCONNECT HOSE CONNECTOR FROM SPOUT/CAP/LID/OPENING.
3. [Place sprayer back into holster/holder.]

Optional:

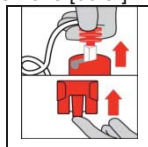
Refill/Reuse Directions

[The Pull 'N Spray II/Applicator Name [applicator/sprayer/wand] may be reused with the available Product Name refill bottle/container. Read and follow instructions in Reuse Directions to reuse the applicator.]

Refill/Reuse Directions

How to attach the [Pull 'N Spray II/Applicator Name] [applicator/sprayer/wand] to Product name [refill bottle]:

Remove [color] hose from original bottle/container:

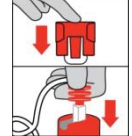


[To remove the side holster/holder from original bottle/container, pull/lift the bottom tab underneath and slide the holster/holder up.]

Bold, italicized text is information for the reader and is not part of the label.

[Bracketed information is optional text.] Text separated by / denotes and/or options.

Master label formatted according to EPA Smart label style guide – items on the first page does not mean they will appear on front panel

	<p>[Attach the sprayer holster/holder to [Product Name] refill bottle/container by sliding the holster/holder down onto the knob.]</p> <p>Insert [color] hose connector into [color] spout/lid/opening on cap <u>until it clicks</u>.</p>
---	---

Option 4 – Battery Powered Wand/Comfort Wand

[[Applicator Name] [Applicator/Wand] Directions]

HOW TO USE:

Prep [Wand]

1. Remove sprayer [Applicator Name] from holster/holder.
2. [Remove [color] pull strip to activate batteries].
3. Unfold/Flip-open [Applicator Name] / [wand] until it clicks/locks into position.

Connect

1. [Unwrap/uncoil/extend hose and] insert [color] hose connector into [color] spout/lid/opening on bottle cap until it clicks.
2. [Flip up [color] spout until fully upright.] / [Twist spout/cap/lid to “ON”.] / [Pull spout/cap/lid up].

Spray

1. Turn sprayer nozzle to desired spray/spray pattern descriptor [spray pattern icon].
2. [Slide [color] switch on trigger to “Unlock” [illustration]].
3. Press trigger to spray.

Finish

1. [Turn nozzle to “OFF”/X.]
2. [Slide [color] switch on trigger to “Lock” [illustration]].
3. Fold [Applicator Name] wand closed [and place sprayer back in holster/holder.]

Important Use Information: Do not submerge in water. When storing sprayer for long periods, remove batteries.

[To replace batteries: See marked diagram inside battery compartment.]

[Optional Troubleshooting Section for [Battery Powered] [Comfort Wand] [Comfort Shot Wand] [Pump ‘N Go] [EZ Sprayer] Applicator [Applicator Name] Directions]]

Troubleshooting Tips:

Problem: Sprayer does not spray [function].

Possible Cause: Batteries not installed properly.

Solution: See instructions for correct battery placement.

Problem: Sprayer makes a straining noise [Sprayer runs but nothing [no product] comes out].

Possible Cause: Sprayer nozzle is turned Off.

Solution: Turn sprayer nozzle to [desired] spray setting [position].

Possible Cause: [Red] [color] hose connector is not flipped up.

Solution: Insert [color] hose connector into [color] spout/knob/opening on bottle cap until it clicks and flip up spout until fully upright.

Possible Cause: Sprayer is not primed.

Solution: Press and hold button on sprayer for about X **(10 / 15 / 20 / 30)** seconds to prime sprayer.

Problem: Spray pattern is weak [or uneven] [product flow is uneven or dribbles out of nozzle].

Possible Cause: Weak batteries.

Solution: Install fresh set of batteries.

Possible Cause: [Red] [color] hose connector is not flipped up.

Solution: Insert [color] hose connector into [color] spout/knob/opening on bottle cap until it clicks. [Attach coupler to the cap] and flip up spout until fully upright.

Possible Cause: Sprayer nozzle not fully open.

Solution: Turn sprayer nozzle to [desired] spray setting [position].

End of Optional Troubleshooting Section for [Battery Powered] [Comfort Wand] [Comfort Shot Wand]

Optional Applicator Transfer to Refill Bottle Directions:

Refill/Reuse Directions

[The Comfort Wand/Applicator Name] [applicator/sprayer/wand] may be reused with [Product Name] refill bottle/container. Read and follow instructions in Reuse Directions to reuse the applicator.]

Refill/Reuse Directions

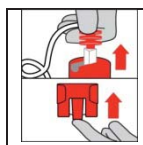
How to attach the [Comfort Wand/Applicator Name] [applicator/sprayer/wand] to [Product Name] [refill bottle]:

Remove [color] hose connector from original bottle/container:

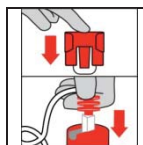
Bold, italicized text is information for the reader and is not part of the label.

[Bracketed information is optional text.] Text separated by / denotes and/or options.

Master label formatted according to EPA Smart label style guide – items on the first page does not mean they will appear on front panel



[To remove the side holster/holder from original bottle/container, pull/lift the bottom tab underneath and slide the holster/holder up.]



[Attach the sprayer holster/holder to [Product Name] refill bottle/container by sliding the holster/holder down onto the knob.]

Insert [color] hose connector into [color] spout/opening on cap [until it clicks].

Optional Pour Refill into RTU bottle Refill Directions:

Refill text for Refill Container:

[How to Refill: Do not reuse or refill this container. Use this product to refill the empty [EPA Reg. No. 239-New: Ortho R&F RTU] container by pouring product carefully and directly into the container. DO NOT add water. Do not refill [EPA Reg. No. 239-NEW] with any other product.]

Or:

[Use this product to refill the empty [insert brand name for 239-NEW: Ortho R&F RTU] container by pouring product carefully and directly into the container. DO NOT add water.]

RTU Label: For Ready-To-Use Containers with Applicators Intended to be Reused/Refilled

[HOW TO REFILL

To refill this empty container, pour product carefully and directly from the [insert brand name] container designated as the ready-to-use refill container. DO NOT add water.]

METHODS OF USE AND GENERAL APPLICATION INSTRUCTIONS

[USE INFORMATION/How It Works]

[Product Name/This product may be used [indoors or] outdoors as a contact spray for flying and crawling pests commonly found in and around the home/on houseplants/in and around the garden and landscaping. Product Name /This product contains Pyrethrum, derived from a Chrysanthemum flower, to give fast and effective kill on contact. Pyrethrum also will “flush” hiding insects, which then allows you to spray them for immediate contact kill. [Product Name /This product may be used throughout the growing season; or as a pre-harvest treatment. It is acceptable for use up to the day of harvest on plants.] [Product Name /This product must come into contact with insects in order to kill them.] Adjust spray nozzle to give a coarse, wet spray.]

Note to PM: The section below may be formatted as a table on the final printed label.

OPTION 1 - INDOORS:

House Flies, Gnats, Mosquitoes, Flying Moths: As a room spray to control these pests, close doors and windows and pump spray, aiming the nozzle into the upper corners of the room and filling the room with a fine mist. Do not remain in treated area. Exit area immediately and remain outside the treated area until aerosols, vapors, and/or mists have dispersed. Do not allow adults, children, or pets to enter until vapors, mists, and aerosols have dispersed, and the treated area has been thoroughly ventilated. Keep room closed for at least 15 minutes and then air room out before occupancy. Before spraying in kitchen or dining areas, cover or remove food and utensils.

Ants except carpenter and pharaoh ants, Asian Lady Beetles, Boxelder Bugs, Brown Marmorated Stink Bugs (BMSB), Cockroaches (Water Bugs/Palmetto Bugs), Sowbugs, Pillbugs, Crickets, Silverfish, Firebrats, Fleas, Ticks, Stink Bugs, and Spiders, including Black Widows and Scorpions: Spray into cracks and crevices, along baseboards, behind and beneath cabinets, cupboards, pantry, other food storage areas, under stoves, sinks, refrigerators, and in and around waste containers and other areas where these pests are seen or suspected of hiding. Spray as many pests as possible, especially as they are being flushed from hiding. Spray ant trails and places where they are entering the house.

Fleas and Ticks: Where fleas and ticks are associated with household pets, remove and launder or replace the pet’s bedding, and spray the surrounding area. Pay particular attention to cracks and crevices, along baseboards, carpeted areas, area rugs, and fabric covered furniture where these pests may be found. Replace pet bedding when spray is dry. Concurrent treatment of the pets and their yard areas is recommended with a product labeled for those sites and pests.

Carpet Beetles: Apply as a spot treatment along baseboards and edges of carpet and rugs. Also spray under carpets and area rugs after vacuuming area to remove debris. Spray carpet in corners of rooms, under furniture, in closets, on shelving and other areas where these pests are seen or suspected.

Sawtoothed Grain Beetles, Indian Meal Moths, Rice Weevils, Confused Flour Beetles: To kill the exposed forms of these pests, find and destroy infested packages of food products in cabinets or pantry. Remove shelf paper. Clean inside cabinets thoroughly. Remove packaged goods and spray shelves and cracks and crevices. Replace shelf paper with new paper and return packaged goods when spray is dry.

[Bracketed information is optional text.] Text separated by / denotes and/or options.

Master label formatted according to EPA Smart label style guide – items on the first page does not mean they will appear on front panel

Note to PM: The text under indoor house plants to outdoors section may be used alone for an indoor house plant only product.

OPTION 2 - [FOR INDOOR HOUSE PLANTS:]

[Phytotoxicity Note: Plant safety is an important consideration when using insecticides. However, it is not possible to evaluate the potential adverse effects of [this product] on numerous plant varieties that may react differently to insecticides in different growth stages or under varying environmental conditions. Before making widespread applications of [this product] treat a limited number of plants and observe for adverse effects over a one to 10 day period].

HOW TO APPLY/USE: Wearing household latex or rubber gloves, use this ready-to-use bottle to apply product. Water plant thoroughly. Turn spray nozzle to the on position, and hold spray nozzle about 12" from the plants. Spray [lightly] [thoroughly] covering, contacting insects on upper and lower leaf surfaces until surfaces are slightly wet. Avoid over-saturating. (Many insects hide on the underside of the leaf.) Turn off any circulating fans to avoid drift and contact with eyes and skin. Allow liquid to dry in treated areas.

Wash hands thoroughly after handling and before eating or smoking. Do not allow spray to drift to non-target plants or water supplies. Avoid contamination of food and feedstuffs.

WHEN TO APPLY/USE: Use at first signs of insect infestation, preferably before damage and feeding occurs. Do not wait until plants are heavily infested.

WHERE TO APPLY/USE: On common houseplants

INSECTS [KILLED/CONTROLLED]

[On] Houseplants: Ants except carpenter and pharaoh ants, Aphids, Armyworms, Asparagus Beetles, Blister Beetles, Cabbage Loopers, Cabbage Worms, Caterpillars, Colorado Potato Beetles, Corn Earworms, Cucumber Beetles, Cutworms, Diamondback Moth Larvae, Earwigs, Fall Cankerworms, Fireworms, Flea Beetles, Gnats (including Fungus Gnats), Harlequin bugs, Inchworms, Japanese Beetles, Lace Bugs, Leafhoppers, Leafrollers, Leafminers, Leaf-tiers, Mealybugs, Mexican Bean Beetles, Mites, Rose Chafers, Scales, Spiders, Spider Mites, Spring Cankerworms, Springtails, Stink Bugs, Thrips (Exposed), and Whiteflies.]

Option3 - OUTDOORS:

[On]Vegetables (including in home greenhouses): Arugula, Beets, Broccoli, Brussels Sprouts, Cabbage, Carrots, Chinese Cabbage (Bok Choy), Chinese Mustard Cabbage (Gai Choy), Cabbage (Napa), Cauliflower, Cucumbers, Collards, Cilantro, Celery, Eggplant, Edible Gourds, Endive, Japanese Radish (Daikon), Lettuce (Head and Leafy), Okra, Melons (including hybrids-Cantaloupe, Casaba, Crenshaw, Honeydew, Muskmelon), Parsley, Parsnips, Potato, Peppers (including Bell, Chili, Cooking, Pimentos, Sweet), Pumpkins, Rhubarb, Rutabaga, Radishes, Swiss Chard, Squash (Winter and Summer), Spinach, Tomatillo, Tomatoes, Watermelons, and Zucchini.

[On]Small Fruits and Berries: Blackberries, Blueberries, Currants, Dewberries, Elderberries, Gooseberries, Grapes, Huckleberries, Olallieberries, Raspberries (Black and Red), Strawberries, and Youngberries.

[On]Fruits: Apples, Apricots, Crabapples, Cherries (Sweet and Sour), Citrus Hybrids, Grapefruit, Loquat, Lemons, Limes, Nectarines, Oranges (Sweet and Sour), Oriental Pears, Pears, Pummelos, Peaches, Plums, Prunes, and Quince.

[On]For Use on All Ornamental Plants [such as Roses, Hyacinth, Gladiolus, Freesia]. All Annuals [such as Cosmos, Celosia, Ageratum, Impatiens]. All Perennials [such as Gazania, Cineraria, Chrysanthemum, Zinnia]. All Shrubs [such as Mountain Laurel, Juniper, Privet, Mock Orange]. All Shade Trees [such as Oak, London Plane, Maple, Sycamore, Mulberry], and All Vines [such as Trumpet Creeper, Creeping Lantana, Wisteria, Honeysuckle].

For the Control of: Ants except carpenter and pharaoh ants, Aphids, Armyworms, Asparagus Beetles, Blister Beetles, Brown Marmorated Stink Bugs (BMSB), Cabbage Loopers, 12-Spotted Cucumber Beetles, Colorado Potato Beetles, Corn Earworms, Crickets, Cross-striped Cabbageworms, Diamondback Moth Larvae, Fireworms, Flea Beetles, Fruit Worms, Fruittree Leafrollers, Grape Leafhoppers, Gypsy Moths (larvae and adults), Harlequin Bugs, Tomato Hornworms, Imported Cabbageworms, Leafhoppers, Leafrollers, Leaf-tiers, Mexican Bean Beetles, Potato Leafhoppers, Psyllids, Stink Bugs, Thrips, Vinegar Flies, and Webworms: Water plant thoroughly. Turn spray nozzle to the on position, and hold spray nozzle about 12" from the plants. Spray [lightly] [thoroughly] covering, contacting insects on upper and lower leaf surfaces until surfaces are slightly wet. Do not over-saturate. Do not water the treated area to the point of runoff. Spray when insects or their damage first appears. Do not wait until plants are heavily infested. Spray may be applied up to and including day of harvest.

OPTION 4 - ALTERNATIVE OUTDOORS ONLY PRODUCT LANGUAGE

Note to PM: This section may be used for an outdoor only product instead of the above text

Note to PM: The section below may be formatted as a table on the final printed label.

[Phytotoxicity Note: Plant safety is an important consideration when using insecticides. However, it is not possible to evaluate the potential adverse effects of [Product Name /this product] on numerous plant varieties that may react differently to insecticides in different growth stages or under varying environmental conditions. Before making widespread applications of [Product Name /this product] treat a limited number of plants and observe for adverse effects over a one to 10 day period.]

HOW TO APPLY/USE: Wearing household latex or rubber gloves, use this ready-to-use bottle to apply product. Water plant thoroughly. Turn spray nozzle to the on position, and hold spray nozzle about 12" from the plants. Spray [lightly] [thoroughly] covering, contacting insects on upper and lower leaf surfaces until surfaces are slightly wet. Avoid over-saturating. (Many insects hide on the underside of the leaf.) Apply when air is calm to avoid drift and contact with eyes and skin. Start applying at the farthest corner of the treatment area and work backward. Allow liquid to dry in treated areas before re-entering.

[Bracketed information is optional text.] Text separated by / denotes and/or options.

Master label formatted according to EPA Smart label style guide – items on the first page does not mean they will appear on front panel

Wash hands thoroughly after handling and before eating or smoking. Do not allow spray to drift to non-target plants or water supplies. Wash all fruits and vegetables before eating. Avoid contamination of food and feedstuffs.

WHEN TO APPLY/USE: Use at first signs of insect infestation, preferably before damage and feeding occurs. Do not wait until plants are heavily infested. Spray may be applied up to and including day of harvest.

For Best Results: Apply in the twilight hours of the evening or just before sunrise to avoid possible harm to honey bees. Honey bees normally forage during the daylight hours, when the temperatures reach or exceed 55 degrees F.

WHERE TO APPLY/USE: [On] [Home Garden] Vegetables, Fruit and Nut Trees, Fruits, Nuts, Roses, Flowers, Ornamentals, Herbs, Spices, Shrubs, Bushes, Evergreens, Shade Trees. Do not use on lawns or large trees. For trees taller than 10 feet, consider hiring a licensed professional.

[INSECTS [KILLED/CONTROLLED]]

[On] Fruit & Nut Trees:

Apple Aphids, Caterpillars, Codling Moths, filbertworms, fruit flies, green fruitworms, leafhoppers, leafrollers, lesser peach tree borers, mirid bugs, navel orangeworms, oriental fruit moths, peach twig borers, pear psylla, plum curculios, rose chafers, spotted tentiform leafminers, tarnished plant bugs, thrips, and walnut husk flies.

[On] Vegetables & Melons:

Aphids, Armyworms, Artichoke Plume Moths, Asparagus Beetles, Bean Beetles, Cabbage Loopers, Colorado potato beetles, Corn Earworms, Corn Rootworms (adult), Cucumber Beetles (adult), Cutworms, Diamondback Moths, European Corn Borers, Flea beetles, Hornworms, Imported Cabbage Loopers, Leaf Hoppers, Leafminers, Melonworms, Onion Maggots (adult), Onion Thrips, Pepper Weevils, Pickleworms, Plantbugs (including Lygus, Squash, and Stink bugs), Potato Psyllids, Potato Tuberworms, Rindworms, Squash Vine Borers, Tomato Fruitworms, and Tomato Pinworms.

[On] Ornamentals (including Roses):

Asparagus beetles, Beet Armyworms, Cabbage Loopers, Japanese Beetles, Lygus bugs, and Omnivorous Leafrollers.

[On and Around] Ornamental Roses, Flowers, Evergreens, Trees, Shade Trees, Bushes and Shrubs:

Adelgids, Ants (Acrobat, Argentine, Bigheaded, Cornfield, Crazy, Field, Ghost, Harvester, Odorous House, Pavement, and Thief; EXCLUDING Pharaoh and Carpenter ants), Aphids, Apple Aphids, Apple Maggots, Armyworms, Asian Cerambycid Beetles, Asian Lady Beetles, Asian Pine Tip Moths, Australian Sod Flies, Azalea Leafminers, Bagworms, Beetles, Billbugs, Birch Leafminers, Black Fungus Beetles, Black Turfgrass Ataenius (adult), Black Turpentine Beetles, Black Vine Weevils, Blister Beetles, Blow Flies, Blue Grass Billbugs (adult), Boll Weevils, Boxelder Bugs, Boxwood Leafminers, Brown Dog Ticks, Brown Spider Beetles, Brown Spruce Longhorn Beetles, Browntail Moths, Budworms, Cadelles, California Oakworms, Campylomma Bugs, Cankerworms, Carrion Beetles, Catalpa Sphinx, Caterpillar Ants, Caterpillars (including Tent), Catorama beetles, Chinch Bugs, Chrysanthemum Leafminers, Cicadas, Clearwing Borers, Climbing Cutworms, Clover Mites, Clover Weevils, Cockroaches (Smoky Brown, American, German), Codling Moths, Cone Beetles, Cone Worms, Conifer Spider Mites (adult), Corn Borers, Corn Earworms, Cottonwood Borers, Cottonwood Leaf Beetles, Crane Flies, Crickets, Cutworms (exposed), Dermestid Beetles, Diamondback Larvae, Dichondra Flea Beetles, Dingy Cutworms Adult, Douglas-Fir Midges, Douglas-Fir Tussock Moths, Dung Beetles, Earwigs, Eastern Tent Caterpillars, Elm Leaf Aphids, Elm Spanworms, Elmleaf Beetles, Emerald Ash Borers, Eriophyid Mites, European Pine Shoot Moths, European Pine Tip Moths, European Red Mites, Fall Armyworms, Fall Cankerworms, Fall Webworms, Field Crickets, Firebrats, Fireworms, Flatheaded Borers, Fleas, Flea Beetles, Forest Tent Caterpillars, Fruit Flies, Fruittree Leafrollers, Fuller Rose Beetles, Fungus Beetles, Fungus Gnats, Gall Midges, Gall Wasps, Giant Root Aphids, Glassy-winged Sharpshooters, Ground Beetles, Grasshoppers, Green Apple Aphids, Greenbugs, Greenhouse Thrips, Greenhouse Whiteflies, Greenstriped Mapleworms, Grubs, Gypsy Moths (adult and larvae), Hackberry Nipplegall Makers, Hairy Fungus Beetles, Harlequin Bugs, Heliothis spp., Holly Budmoths, Holly Leafminers, Hoplia Beetles, Hornworms, Hyperodes Weevils (adult), Inchworms, Iris Borers, Jackpine Budworms, Japanese Beetles, Jeffrey Pine Needleminers, June Beetles, Katydid, Lace Bugs, Lawn Moths (Sod Webworms), Leaf Tiers, Leafhoppers, Leafminers, Leafrollers, Lesser Peach Tree Borers, Locust Borers, Loopers, Love Bugs, Lygus Bugs, Madrone Thrips, Maggots, Maple Leafcutters, McDaniel Spider Mites, Mealybugs, Millipedes, Mimosa Webworms, Plant Mites, Mole Crickets (nymphs and young adults), Moths, Murmidius Beetles, Mushroom Flies, Nantucket Pine Tip Moths, Oak Leaf Skeletonizers, Oak Leafminers, Oakworm complex, Oleander Caterpillars, Olive Ash Borers, Orange Tortrix, Orangestriped Oakworms, Pacific Mites, Palmetto Bugs, Peach Twig Borers, Pear Psylla, Pear Sawflies, Pearleaf Blister Mites, Periodical Cicadas, Phorid Flies, Pillbugs, Pine Bark Beetles, Pine Engraver, Pine Sawflies, Pine Spittlebugs, Pink Scavenger Caterpillars, Pinworms, Pitch Pine Tip Moths, Plant Bugs, Plum Curculios, Poinsettia Hornworms, Ponderosa Pine Needleminers, Psyllids, Puss Caterpillars, Raspberry Horntails, Red Gum Lerp Psyllids, Red Lily Beetles, Red Oak Borers, Redbanded Leafrollers, Redhumped Oakworms, Rootworms, Rose Aphids, Rose Chafers, Rose Curculios, Rose Leafhoppers, Rose Slugs, Rosy Apple Aphids, Royal Palm Bugs, Saddled Prominent Caterpillars, Sawflies (exposed), Scales (Crawlers), Sciarid Flies, Seedbugs, Silverfish, Small Fruit Flies, Southern Pine Beetles, Southern Red Mites (adult), Southern Chinch Bugs, Sowbugs, Spider Beetles, Spider Mites, Spiders, Spiny Elm Caterpillars, Spittlebugs, Springtails, Spruce Budworms, Spruce Needleminers, Stalk Borers, Strawberry Mites, Subtropical Pine Tip Moths, Sweet Potato Whiteflies, Sycamore Leaf Beetles, Tarnished Plant Bugs, Tent Caterpillars, Thorn Bugs, Thrips (exposed), Ticks, Trogoderma Beetles, Two-spotted Spider Mites, Viburnum Leaf Beetles, Walnut Caterpillars, Wasps, Waterbugs, Webworms (including Garden, Sod, Tropical), Weevils, Western Flower Thrips, Western Hemlock Loopers, Western Pine Tip Moths, Western Spruce Budworms, White Apple Leafhoppers, White Apple Leafrollers, White Grubs (Japanese Beetles, European Chafers, Southern Chafers), Willow Leaf Beetles, Woolly Apple Aphids, and Yellow Poplar Weevils.]

Warranty/Disclaimer Statement

NOTICE: To the extent consistent with applicable law, buyer assumes all responsibility of risks of use, storage or handling of this product not used in accordance with directions.

Bold, italicized text is information for the reader and is not part of the label.

[Bracketed information is optional text.] Text separated by / denotes and/or options.

Master label formatted according to EPA Smart label style guide – items on the first page does not mean they will appear on front panel

MARKETING/ADVERTISING CLAIMS

(claims may appear on any or all label panel(s))

Note to PM: Qualified claims may use other number of or symbols to denote the qualification than those shown on this label

Note to PM: Insect/Pest/Bug may be used interchangeably in claims

Note to PM: Listed refers to all insects contained on the market label

Product Claims

1. Ready To Use / No Mixing / No Measuring
2. Water-Based Insect Killer Formula
3. Kills Listed Insect Pests on Contact[*]
4. Use Indoors or Outdoors
5. May Be Used on Vegetables Up To Day of Harvest / Controls “Last Minute” Vegetable Garden Pests Before Harvest
6. Contains Pyrethrum/Pyrethrins, Derived from a Chrysanthemum Flower[s]
7. Controls Flying and Crawling Pests in the Home and Garden [Home Greenhouses]
8. Indoors/Outdoors
9. Flying Insects/Crawling Insects
10. For Use On Roses, Flowers, Trees, Shrubs, and Vines
11. Use to Control Rose and Ornamental Pests as Listed
12. Do not spray outdoors in heat of the day
13. Kills Stink Bugs, Brown Marmorated Stink Bugs (BMSB), Asian Lady Beetles and Boxelder Bugs
14. [May be/Can be] used up until the day before harvest
15. Insecticide and Miticide
16. Home and Garden Insecticide [and Miticide]
17. For [home] [outdoor] residential use only
18. Can be used in vegetable gardens
19. For use in vegetable gardens
20. For use on fruits and vegetables
21. No mixing
22. Kills on Contact
23. Kills listed [insects] [pests] on contact[*]
24. For Home [Vegetable and Flower] Gardens, Nurseries, Home Greenhouses, and Orchards
25. Got [insert listed insect here]? Get [insert brand name here]!
26. Convenient
27. Easy To Use
28. Kills all accessible stages of insects
29. Kills “last minute” vegetable garden pests when applied the day before harvest
30. Kills [over] 250 [250+] [types of] Listed Insects [on] [Vegetables, Ornamentals, Fruits] [*]
31. For use [Indoors] [Outdoors]
32. For [home] [outdoor] [indoor] residential use only
33. Kills listed insects on common houseplants[*]
34. Formulated for [use on] Vegetables/Fruits/Melons/Produce/Nuts
35. Intended for [use on] Vegetables/Fruits/Melons/Produce/Nuts
36. Best results on Vegetables/Fruits/Melons/Produce/Nuts when used as directed
37. Kills over 100/100+ listed bugs/insects/pests[*]
38. Reduces insect population[s] in your garden/home/plants
39. Protects/Guards plants from listed pests/bugs/insects[*]
40. Mean and Clean
41. Hard on listed pests[*]
42. Effective
43. Reliable
44. For use on vegetables/vegetable plants/veggies/plants/fruits/fruit plants
45. For[use on] vegetable gardens
46. Kills destructive insects
47. Formulated [especially/specifically/uniquely] for vegetables/vegetable gardens/fruits and vegetables gardens
48. Kills listed insects on common houseplants/ vegetables/ vegetable gardens/ fruits and vegetables[*]

[*Refer to booklet/label for complete list / See inside booklet for complete list / as listed]

Note to PM: Claims containing the word “listed” will be qualified using the above qualifier when “listed” is removed.

Applicator Claims

49. stay dry
50. No messy clean-up
51. Hands One-handed operation [use] [spraying]
52. [Requires] no measuring, [no mixing]
53. [The] Easy way to spray
54. [Ergonomic] [Comfort] grip [handle]
55. Ready-To-Use®/Ready To Use/Applicator name
56. [Applicator name]
57. Convenient [simple] design
58. Easy [and simple] to use

Bold, italicized text is information for the reader and is not part of the label.

[Bracketed information is optional text.] Text separated by / denotes and/or options.

Master label formatted according to EPA Smart label style guide – items on the first page does not mean they will appear on front panel

59. Quick & Easy [to use]
60. Save[s] time [and energy]
61. No Spreading – No complicated mixing
62. The fast, easy way of insect control
63. Easy To Use spray application/nozzle
64. Ready to use spray nozzle
65. Convenient because it is premixed
66. Easy-To-Use
67. No Mess
68. NO MIXING
69. No mixing, no measuring, no mess
70. Ready-To-Use
71. Twist Cap
72. Effective and Reliable
73. Precision spray/sprayer
74. Targeted spray/sprayer

Comfort Wand Claims

75. Continuous spray [wand]
76. Comfort wand
77. The easy way [to spray] [to kill bugs/mites/diseases]
78. Saves time and energy
79. Extended Reach
80. No more bending/kneeling
81. Reusable [Comfort] [Continuous Spray][Wand]
82. Rechargeable
83. Powered by Duracell/Battery Brand
84. [Wand] [Applicator Name] will last [for] [at least] 20/X bottles!
85. [Wand] [Applicator Name] will last over 25 gallons![Wand] [Applicator Name] will last for years* **based on X applications per year

POP Claims

86. Value [pack/ size/buy]
87. Bonus [value/ size/offer/package/pack/buy]
88. Exclusive item [size]
89. Special [buy/offer/size/item]
90. Limited time offer
91. X% more than X size
92. Save [money]
93. Free sample
94. X% more [free]
95. Combo pack
96. Great value
97. Bottle in [a] box

OTHER

98. XX% more than X gallon size
99. XX less plastic
100. [Company] & Your Environment – Your yard is a place for family and pets to enjoy. That's why [company] products are designed with care to provide effective solutions to insect problems. Please follow instructions for appropriate usage, storage and disposal.
101. New/Now (The following claim may appear on any label panel for 6 months following commercial introduction)
102. Proven performance
103. Read Entire label before use
104. [Recyclable symbol]
105. Takes the guesswork out of insect control [in the garden/landscape]
106. Insect control for your garden/landscape
107. Insect control made easy
108. Be in control of insects in your garden/landscape
109. Before [illustration] / After [illustration]
110. For a beautiful [insect free] garden/landscape
111. [For] [Get] a insect free garden/landscape
112. For Home Garden/Landscape Care
113. For Home [Garden/Landscape] Use [only]
114. From the garden care experts at [Company Name]
115. From the insect experts at [Company Name]
116. Help[s] [keep[s]] the garden/landscape look[ing] beautiful
117. Helps keep gardens/landscapes insect free
118. [For] Indoor & Outdoor Residential use only
119. Intended for residential use
120. Peel Open for use directions and further information
121. OPEN
122. Resealable Label for Directions & Precautions

[Bracketed information is optional text.] Text separated by / denotes and/or options.

Master label formatted according to EPA Smart label style guide – items on the first page does not mean they will appear on front panel

- 123. Peel Open for use directions and further information
- 124. PRESS TO RESEAL [Placed on booklet cover or base of label depending upon space.]
- 125. PEEL HERE / PRESS TO RESEAL
- 126. Product of –and/or- Made in U.S.A.
- 127. Assembled in the USA
- 128. ©20XX, licensed by [Company/Brand]. World rights reserved.
- 129. QUESTIONS OR COMMENTS - [phone icon] 1-800-xxxxxxx www.xxxx.com [Visit our website] [computer icon]
- 130. Bonnie[’s] [Plants] Choice [for Garden Control/Defense]
- 131. Use with [your] Bonnie Plants
- 132. Bonnie[’s] [Plant] Chooses Ortho [Garden Defense] [to protect/defend plants against pest/disease]
- 133. Bonnie[’s] [Plant] Chooses Ortho for garden pest/disease control

Guarantees:

- 134. Guaranteed+++
- 135. [Company/Brand] Guarantee[d] +++
- 136. Guaranteed [results] +++
- 137. [Company/Brand] Satisfaction guaranteed[+++]
- 138. [Company/Brand] [Promise your] satisfaction guaranteed [or your money back]
- 139. +++ [Company/Brand] Promise: If this [company/brand] product when used for the intended purpose fails to give you complete satisfaction return the item to the [company] store where purchased for free replacement of the same or similar item.
- 140. +++The [Company/Brand] Guarantee: If for any reason you, the consumer, are not satisfied with this product, mail us your original proof of purchase to obtain a full refund of your purchase price.
- 141. +++Consumer Guarantee: If for any reason you are not satisfied after using this product, simply send us original proof of purchase, and we will refund the purchase price.

Product Facts Tables

For Houseplant Product

PRODUCT FACTS	
Kills	Common Insects found on House Plants, including: Aphids, Fungus Gnats, Mealybugs, Mites, Scales, Spider Mites, Springtails, Thrips (exposed), Whiteflies and other Listed Insects
Where To Apply/Use	Common Houseplants
Amount To Apply/Use	Spray lightly covering upper and lower leaf surfaces.
When to Apply/Use	At the first signs of insect infestation. Can be used up to day of harvest. Kills eggs during dormant stage.

For Outdoor Product

PRODUCT FACTS	
Kills	Over 250 types of listed insects – including Ants (Excluding Pharaoh and Carpenter Ants), Aphids, Beetles (including Japanese and Cucumber beetles), Caterpillars (including Armyworms, Cabbage Loopers, Corn Earworms, Cutworms, Diamondback Moths, Hornworms, Imported Cabbageworms, Lesser Peachtree Borers, Oriental Fruit Moths, Peach Twig Borers, Tomato Fruitworms, Tomato Pinworms), Leafhoppers, Mites & other listed Insects
Where To Apply/Use	Vegetables, Fruits, Herbs, Spices, Roses, Flowers, Shrubs, Evergreen and Shade Trees
Amount To Apply/Use	Spray lightly covering upper and lower leaf surfaces.
When to Apply/Use	At the first signs of insect infestation. Can be used up to day of harvest. Kills during dormant stage.