

239-2723

8/26/2014

1/16



U.S. ENVIRONMENTAL PROTECTION AGENCY
Office of Pesticide Programs
Registration Division (7505P)
1200 Pennsylvania Ave., NW
Washington, D.C. 20460

EPA Registration
Number:

239-2723

Date of Issuance:

AUG 26 2014

NOTICE OF PESTICIDE:

- Registration
- Reregistration

(under FIFRA, as amended)

Term of Issuance: Conditional

Name of Pesticide Product:
NS 515

Name and Address of Registrant (include ZIP Code):

The Scotts Company LLC
DBA The Ortho Group
PO Box 190
Marysville, OH 43040

Note: Changes in labeling differing in substance from that accepted in connection with this registration must be submitted to and accepted by the Registration Division prior to use of the label in commerce. In any correspondence on this product always refer to the above EPA registration number.

On the basis of information furnished by the registrant, the above named pesticide is hereby registered/reregistered under the Federal Insecticide, Fungicide and Rodenticide Act. Registration is in no way to be construed as an endorsement or recommendation of this product by the Agency. In order to protect health and the environment, the Administrator, on his motion, may at any time suspend or cancel the registration of a pesticide in accordance with the Act. The acceptance of any name in connection with the registration of a product under this Act is not to be construed as giving the registrant a right to exclusive use of the name or to its use if it has been covered by others.

This product is registered in accordance with FIFRA §3(c)(7)(A) provided that you:

1. Submit and/or cite all data required for registration review of your product when the Agency requires all registrants of similar products to submit data. Data requirements can be found at www.regulations.gov. Glyphosate data requirements are outlined in GDCI-417300-886 under docket ID EPA-HQ-OPP-2009-0361.
2. Update EPA Registration Number to 239-2723.

The basic confidential statement of formula (CSF), dated 4/14/14, is acceptable.

If these conditions are not complied with, the registration will be subject to cancellation in accordance with FIFRA §6(e). Your release for shipment of the product constitutes acceptance of these conditions. A stamped copy of the label is enclosed for your records. Submit one (1) copy of the final printed label before you release the product for shipment.

If you have any questions regarding this Notice, please contact Sarah Meadows at (703) 347-0505 or meadows.sarah@epa.gov.

Signature of Approving Official:

Kable Bo Davis
Product Manager 25
Herbicide Branch
Registration Division (7505P)

Date:

AUG 26 2014

2/16

EPA Reg. No. 239-ETEG

NOTE:

Bold, italicized text is information for the reader and is not part of the label.
[Bracketed information is optional text]. Text separated by / denotes and/or options.

NS-515

ACCEPTED
AUG 26 2014
Under the Federal Insecticide, Fungicide, and Rodenticide Act, as amended, for the pesticide registered under EPA Reg No. 239-2723

Alternate Brand Names

Active Ingredients	
Glyphosate, isopropylamine salt	2.00%
Diquat dibromide	0.10%
Other Ingredients	<u>97.90%</u>
Total	100.00%

**KEEP OUT OF REACH OF CHILDREN
CAUTION**

See [back] [side] [other] [panel] [booklet] for additional precautionary statements

NET CONTENTS:

NOTE:

Bold, italicized text is information for the reader and is not part of the label.
[Bracketed information is optional text]. Text separated by / denotes and/or options.

PRECAUTIONARY STATEMENTS

HAZARDS TO HUMANS AND DOMESTIC ANIMALS

CAUTION: Causes moderate eye irritation. Avoid contact with eyes, skin or clothing. Wash thoroughly with soap and water after handling.

FIRST AID	
IF IN EYES	Hold eye open and rinse slowly and gently with water for 15 to 20 minutes. Remove contact lenses, if present, after the first 5 minutes, then continue rinsing eye. Call a poison control center or doctor for treatment advice.
IF ON SKIN OR CLOTHING	Take off contaminated clothing. Rinse skin immediately with plenty of water for 15-20 minutes. Call a poison control or doctor for treatment advice.
Have the product container or label with you when calling a poison control center or doctor, or going for treatment. You may also contact 1-800-225-2883 for emergency medical treatment information.	

ENVIRONMENTAL HAZARDS

To protect the environment, do not allow pesticide to enter or run off into storm drains, drainage ditches gutters or surface waters. Applying this product in calm weather when rain is not predicted for the next 24 hours will help ensure that wind or rain does not blow or wash pesticide off the treatment area. Rinsing application equipment over the treated area will help to avoid run off to water bodies or drainage systems.

DIRECTIONS FOR USE

It is a violation of federal law to use this product in a manner inconsistent with its labeling. **READ ENTIRE LABEL BEFORE USE.**

USE PRECAUTIONS AND RESTRICTIONS:

- Do not allow people or pets to enter treated area or touch treated plants until sprays have dried.
- Do not apply this product in a way that will contact any person or pet, either directly or through drift. Only the person applying this product may be in the area during application.
- Do not use for spot weed treatment after planting fruits or vegetables.
- Do not mix, store or apply in a galvanized or unlined steel (except stainless steel) sprayer, or through any irrigation systems.
- To prevent tracking product to unintended areas such as your yard, keep people and pets out of treated area until spray has dried.
- When spot treating weeds around desirable plants, shield plants from drift with a piece of cardboard or plastic. If desirable plant is accidentally sprayed, rinse off immediately with water (or cut off treated area).
- Apply when air is calm to prevent drift to desirable plants.

NOTE:

Bold, italicized text is information for the reader and is not part of the label.
[Bracketed information is optional text]. Text separated by / denotes and/or options.

USER SAFETY RECOMMENDATIONS:

- Clothing and protective equipment exposed to this product should be washed in detergent and hot water. Such items should be kept and washed separate from other laundry.
- Users should wash hands before eating, drinking, chewing gum, using tobacco, or using the toilet.
- Users should remove clothing immediately if product gets inside; then wash thoroughly and put on clean clothing.
- Users should remove PPE immediately after handling this product. Wash the outside of gloves before removing. As soon as possible, wash thoroughly and change into clean clothing.

HOW IT WORKS/PRODUCT INFORMATION:

NS-515/Product Name/This product enters plants through foliage and moves systemically to the roots, killing weeds by stopping the production of a substance found in plants. Any product not absorbed by plants will be deactivated after it hits the soil. Weeds [will] [usually] yellow and wilt within hours with complete kill in 1 to 2 weeks.

WHERE TO USE:

NS-515/Product Name/This product can be used to control unwanted weeds and grasses in many areas of your lawn and landscape.

- Along fences and foundations
- Around flowers and vegetable gardens, shrubs and trees
- Driveways, gravel, patios, walkways or mulch beds
- Edging around lawns, foundation and retaining walls
- On wooded and/or vacant lots
- Plus other areas where [tough] weeds are invading your lawn/yard

HOW MUCH TO USE:

Spray the weeds or grasses you want to kill until thoroughly wet. When spot treating weeds around desirable plants, shield plants from drift with a piece of cardboard or plastic. If desirable plant is accidentally sprayed, rinse off immediately with water or cut off treated area.

IMPORTANT: Do not spray plants or grasses you like - they will die. Not recommended for spot weed control in lawns since this product kills lawn grasses.

WHEN TO USE:

- Apply this product when weeds [and grasses] are actively growing. [Use anytime weeds and grasses are actively growing.]
- For best [fastest visual] results, apply during warm, sunny weather [above 60°F] [to accelerate systemic movement from foliage to roots].
- Apply when air is calm to prevent drift to desirable plants.
- This product is rainproof in 2 hours [30, 45, 60, or 90 minutes; 1 hour; less than 1 hour; less than 60 minutes; less than 30 minutes] after application. [Rain or watering 2 hours [30, 45, 60, or 90 minutes; 1 hour; less than 1 hour; less than 60 minutes; less than 30 minutes] after application will not wash away effectiveness.]
- Apply when weeds are small and before seeds form. [Weeds [usually] yellow and wilt within [X]

NOTE:

Bold, italicized text is information for the reader and is not part of the label.
[Bracketed information is optional text]. Text separated by / denotes and/or options.

hours with complete kill in 1 to 2 weeks for annual weeds.

- Hard to kill [Established/Perennial] weeds may require a repeat application [and may take 4 or more weeks for complete kill].

WHEN TO REPLANT:

- All ornamental flowers, trees and shrubs may be planted 2 days after application.
- Lawn grasses, herbs, vegetables (all), and fruits may be planted 7 days after application.

Optional Section - Additional Tips

To Kill Vines:

- If vines are growing up poles, fences, or tree trunks with mature bark, cut vines to a height of 3 to 4 feet and spray vines thoroughly.
- If vines are climbing shrubs or tree trunks with green bark, cut vines at base and treat as directed for stumps or spray regrowth. If spraying regrowth, shield shrubs and green bark from spray drift with a piece of cardboard or plastic.

Poison Ivy and/ Poison Oak:

Contact with these plants anytime of the year can cause an allergic reaction. Spray anytime plants are actively growing, but at least 4 weeks before the first killing frost in the fall. Reapply, if new growth appears. Handle dead plants with rubber gloves. Dispose of plants and rubber gloves in tightly sealed garbage bags.

Wild Blackberry:

Spray anytime plants are actively growing. Dead canes should be cut down and removed. Reapplication is often required to kill deep roots.

Kudzu:

For best results, apply in mid to late summer when vines are mature and actively growing.

Lawn Replacement:

Use this product to kill a [an unwanted] lawn and weeds before planting [a] new lawn [or prior to laying a patio, sidewalk, or driveway].

- Skip one mowing before spraying.
- If soil is dry, water before application and 2 to 3 days after application.
- If green patches remain after 7 days, reapply.
- Wait [at least] 7 days after last application to rake, till or replant with seed or sod.

For Flowerbed and Garden (Plot) Preparation:

Use this product to kill weeds, grasses and brush before planting flowers, fruits, vegetables, trees or shrubs.

- If soil is dry, water before application and 2 to 3 days after application.
- Apply evenly over treatment [plot] area.
- Wait 4 to 6 days for product to kill plants then cleanup plant refuse and till soil.

6/16

NOTE:

EPA Reg. No. 239-ETEG

Bold, italicized text is information for the reader and is not part of the label.

[Bracketed information is optional text]. Text separated by / denotes and/or options.

- Wait 1 – 3 days after last application before planting [garden] flowers, trees and shrubs.
- Wait 7 days before planting herbs, vegetable (all), fruits and lawn grasses.

[Optional illustrations may be used in conjunction with the above Additional Tips section]

7/16

NOTE:

EPA Reg. No. 239-ETEG

Bold, italicized text is information for the reader and is not part of the label.

[Bracketed information is optional text]. Text separated by / denotes and/or options.

GRASS AND WEEDS CONTROLLED [KILLS] GRASS/WEEDS INCLUDING] [KILLS ALL TYPES OF WEEDS & GRASSES]

Some or all of the following weeds will appear on the label.

- | | | | |
|--------------------|---------------------|--------------------|---------------------|
| Annual bluegrass | Dandelion | Maidencane | Smooth bromegrass |
| Annual ryegrass | Dog fennel | Mallow | Smooth catsear |
| Artichoke thistle | Evening primrose | Mayweed | Smooth pigweed |
| Bahiagrass | Fall panicum | Milkweed | Sowthistle |
| Barnyardgrass | False dandelion | Mouseear chickweed | Spotted spurge |
| Beggarweed | Fescue | Narrowleaf | Sprangletop |
| Bentgrass | Fiddleneck | (buckhorn) | St. Augustinegrass |
| Bermudagrass | Field bindweed | Nightshade | Tall fescue |
| Black medic | (Wild morningglory) | (silverleaf) | Tansy ragwort |
| Blue mustard | Field pennycress | Nimblewill | Tansymustard |
| Blue toadflax | Field sandbur | Nutsedge | Teaweed |
| Brassbuttons | Filaree | Oldenlandia | Texas panicum |
| Broadleaf plantain | Florida pusley | Orchardgrass | Timothy |
| Bromegrass | Foxtail | Oxalis | Torpedograss |
| Burclover | Garden spurge | Pampas grass | Trumpet creeper |
| Buttercup | Goosegrass | Pennsylvania | Tumble mustard |
| Canada thistle | Guineagrass | smartweed | Vaseygrass |
| Cattail | Henbit | Pennywort | Virginia creeper |
| Chickweed | Horsenettle | Perennial ryegrass | White clover |
| Cocklebur | Horseradish | Plantain | Whitetop |
| Cogongrass | Horseweed/marestail | Poison hemlock | Wild barley |
| Common groundsel | Iceplant | Prickly lettuce | Wild mustard |
| Common mullein | Johnsongrass | Primrose | Wild oats |
| Common plantain | Kentucky bluegrass | Prostrate spurge | Wild sweet potato |
| Common ragweed | Kikuyugrass | Puncturevine | Witchgrass |
| Crabgrass | Knapweed | Purple nutsedge | Yellow nutgrass |
| Creeping | Knotweed | Quackgrass | Yellow starthistle |
| beggarweed | Lambsquarters | Ragweed | Zoysia |
| Creeping bentgrass | Lantana | Red clover | and other broadleaf |
| Creeping Charlie | Little bittercress | Redroot pigweed | and/& grassy weeds |
| Curly dock | London rocket | Sandspur | |
| Dallisgrass | Lovegrass | Shepherdspurse | |

NOTE:

Bold, italicized text is information for the reader and is not part of the label.
[Bracketed information is optional text]. Text separated by / denotes and/or options.

EPA Reg. No. 239-ETEG

8/16

Directions For Use Options Based On Applicator

Option 1 – Conventional Trigger Small RTU

[Applicator (Device) (Applicator Name) Directions/Instructions]

HOW TO USE:

Spray

1. Turn sprayer nozzle to desired spray.
2. Squeeze trigger repeatedly to spray.

Finish

1. Turn sprayer nozzle to "OFF" [X]

[Optional illustrations may be used in conjunction with the above steps]

Option 2 – Conventional Trigger Large RTU

[Applicator (Device) (Applicator Name) Directions/Instructions]

HOW TO USE:

Spray

1. Remove sprayer from bottle by [sliding/pulling] sprayer up.
2. Unwrap [uncoil] hose and insert [color] hose connector into [color] spout on bottle cap until it clicks.
3. [Flip up [color] spout until fully upright] [Twist spout to "ON"] [Pull spout up].
4. Turn sprayer nozzle to desired spray.
5. Squeeze trigger repeatedly to spray.

Finish

1. Turn sprayer nozzle to "OFF" [X].
2. DO NOT DISCONNECT HOSE CONNECTOR FROM SPOUT.
3. Place sprayer back into holster [holder].

[Optional illustrations may be used in conjunction with the above steps]

STORAGE & DISPOSAL

PESTICIDE STORAGE: [Small] [Large] [Applicator Name] Store in original container in a safe place away from direct sunlight. Keep from freezing.

PESTICIDE DISPOSAL AND/ & CONTAINER HANDLING: Nonrefillable container. Do not reuse or refill this container. **If empty:** Place in trash or offer for recycling if available. **If partly filled:** Call your local solid waste agency for disposal instructions. Never place unused product down any indoor or outdoor drain.

9/16

NOTE:

Bold, italicized text is information for the reader and is not part of the label.
[Bracketed information is optional-text]. Text separated by / denotes and/or options.

Option 3 - Pull 'N Spray® II

[Applicator (Device) (Applicator Name) Directions/Instructions]

HOW TO USE:

Spray

1. Remove sprayer from holster [holder].
2. Unwrap [uncoil] hose and insert [color] hose connector into [color] spout on bottle cap until it clicks.
3. [Flip up [color] spout until fully upright] [Twist spout to "ON"] [Pull spout up].
4. Turn sprayer nozzle to desired spray.
5. Point sprayer away from body. Slowly pull ring at bottom of sprayer until it stops, and hold for two [2] seconds to fill sprayer.
6. Press trigger to spray.

Finish

1. Turn sprayer nozzle to "OFF" [X].
2. DO NOT DISCONNECT HOSE CONNECTOR FROM SPOUT.
3. Place sprayer back into holster [holder].

[Optional illustrations may be used in conjunction with the above steps]

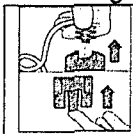
Optional Refill/Reuse Directions

[The Pull 'N Spray II/Applicator Name [applicator/sprayer/wand] may be reused with the available NS-515 Lawn Weed Killer/Product Name refill bottle/container. Read and follow instructions in Reuse Directions to reuse the applicator.]

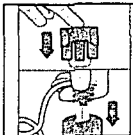
Refill/Reuse Directions

How to attach the [Pull 'N Spray II/Applicator Name] [applicator/sprayer/wand] to NS-515 Lawn Weed Killer /Product Name [refill bottle]:

Removing [color] hose from original bottle/container:



[To remove the side holster [holder] from original bottle/container, pull [lift] the bottom tab underneath and slide the holster [holder] up.]



[Attach the sprayer holster [holder] to NS-515 Lawn Weed Killer/Product Name] refill bottle/container by sliding the holster [holder] down onto the knob.]

Insert [color] hose connector into [color] spout on cap until it clicks.

[Optional illustrations may be used in conjunction with the above steps]

NOTE:

Bold, italicized text is information for the reader and is not part of the label.
[Bracketed information is optional text]. Text separated by / denotes and/or options.

EPA Reg. No. 239-ETEG

10/
16

STORAGE & DISPOSAL

PESTICIDE STORAGE: [Pull 'N Spray II/Applicator Name] [Applicator]: Stored in original container in a safe place away from direct sunlight. Keep from freezing.

PESTICIDE DISPOSAL AND/CONTAINER HANDLING: Pull 'N Spray II/Applicator Name can be reused with NS-515 Lawn Weed Killer /Product Name refill bottle/container. Follow instructions in the Reuse Directions when reusing [applicator name]. Nonrefillable container. Do not reuse or refill this container. **If empty:** Place in trash or offer for recycling if available. **If partly filled:** Call your local solid waste agency for disposal instructions. Never place unused product down any indoor or outdoor drain.

Option 4 – Battery Powered Wand/Comfort Wand

[[Applicator Name] [Applicator/Wand] Directions]

Prep [Wand]

1. Remove sprayer [Applicator Name] from holster [holder].
2. [Remove [color] pull strip to activate batteries].
3. Unfold [Flip Open] [Applicator Name] [wand] until it clicks [locks] into position.

Connect

1. Unwrap [uncoil] hose and insert [color] hose connector into [color] spout on bottle cap until it clicks.
2. [Flip up [color] spout until fully upright.] [Twist spout to "ON".] [Pull spout up.]

Spray

1. Turn sprayer nozzle to desired spray.
2. [Slide [color] switch on trigger to "Unlock" [illustration]].
3. Press trigger to spray.

Finish

1. Turn nozzle to "OFF" [X].
2. [Slide [color] switch on trigger to "Lock" [illustration]].
3. Fold [Applicator Name] wand closed and place sprayer back in holster [holder].

[Optional illustrations may be used in conjunction with the above steps]

Important Use Information: Do not submerge in water. When storing sprayer for long periods, remove batteries.

[To replace batteries: See marked diagram inside battery compartment.]

Optional Refill/Reuse Directions

[The Comfort Wand/Applicator Name [applicator/sprayer/wand] may be reused with NS-515 Lawn Weed Killer/Product Name refill bottle/container. Read and follow instructions in Reuse Directions to reuse the applicator.]

Refill/Reuse Directions

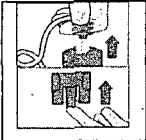
How to attach the [Comfort Wand/Applicator Name] [applicator/sprayer/wand] to NS-515 Lawn Weed Killer/Product name [refill bottle]:

NOTE:

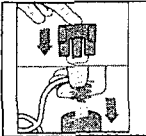
Bold, italicized text is information for the reader and is not part of the label.
[Bracketed information is optional text]. Text separated by / denotes and/or options.

11/16

Remove [color] hose connector from original bottle/container:



[To remove the side holster [holder] from original bottle/container, pull [lift] the bottom tab underneath and slide the holster [holder] up.]



[Attach the sprayer holster [holder] to NS-515 Lawn Weed Killer/Product Name] refill bottle/container by sliding the holster [holder] down onto the knob.]

Insert [color] hose connector into [color] spout on cap until it clicks.

[Optional illustrations may be used in conjunction with the above steps]

STORAGE & DISPOSAL

PESTICIDE STORAGE: Stored in original container in a safe place away from direct sunlight. Keep from freezing.

PESTICIDE DISPOSAL AND/ CONTAINER HANDLING: Comfort Wand /Applicator Name can be reused with NS-515 Lawn Weed Killer/Product Name refill bottle/container. Follow instructions in Reuse Directions when reusing [applicator name]. Nonrefillable container. Do not reuse or refill this container.

If empty: Place in trash or offer for recycling if available. **If partly filled:** Call your local solid waste agency for disposal instructions. Never place unused product down any indoor or outdoor drain.

NOTE:

Bold, italicized text is information for the reader and is not part of the label.
[Bracketed information is optional text]. Text separated by / denotes and/or options.

12/14

OPTIONAL MARKETING CLAIMS

The following Product Facts format is optional and the information may appear inside or outside of a box.

PRODUCT FACTS:

What It Does: Kills all types of weeds and grasses. (See inside for complete list)

Where to Use:

- Along fences and foundations
- Around flowers and vegetable gardens, shrubs and trees
- Driveways, gravel, patios, walkways or mulch beds
- Edging around lawns, foundation and retaining walls
- On wooded and/or vacant lots
- Plus other areas where [tough] weeds are invading your lawn/yard

When to Use: Apply this product when weeds are actively growing.

Questions & Comments: [icon phone] [icon computer]
Call 1-800-xxx-xxxx or Visit our Website at www.ortho.com

The following claims may or may not appear on any label panel or in advertising. Appropriate formula and company specific information will be inserted on Final Printed Label to replace "X"

Efficacy Claims

1. Absorbed into both broadleaf and grassy weeds
2. Absorbed on contact, starts working immediately
3. Begins absorbing on contact
4. For general weed control – kills weeds and grasses in 1 to 2 weeks – roots and all
5. For weeds that are dead in [a] [one] day
6. Ideal for killing unwanted weeds and grasses throughout your yard. Use along fences; in cracks of walks, drives and patios; and around flower beds, trees and shrubs
7. Kills almost all (annual and perennial) weeds, grasses and other unwanted plants
8. Kills existing weeds only, no residual activity in soil
9. Kills more weeds in more places
10. Kills [to] the root(s)! [Guaranteed!]*
11. Kills [the toughest weeds and grasses] the root so weeds [they] don't come back
12. Kills the roots of [both] broadleaf and grassy weeds
13. Kills the root so treated weeds don't come back
14. Kills the weed you see and the root you don't
15. Kills the weed you see and the root others leave behind
16. Kills unwanted weeds and grasses, roots and all

NOTE:

Bold, italicized text is information for the reader and is not part of the label.

[Bracketed information is optional text]. Text separated by / denotes and/or options.

17. Kills weeds and grasses in – Patios - Driveways - Sidewalks - Ornamental Gardens and other non-lawn areas
18. Kills weeds in flowerbeds, around trees, shrubs, and fences, and on patios, paths, sidewalks, sidewalk cracks, walkways, driveways, and other areas in your yard
19. Kills weeds, roots and all
20. Lawns and gardens can be reseeded or planted soon after treatment
21. One application kills over [XXX] types of weeds and grasses, roots and all
22. Provides maximum control: Kills weeds to the root so they don't ever come back
23. Ornamental gardens can be reseeded or planted 2 days after treatment
24. Spray the [weed] leaves to kill the root

Formula Claims

25. Approved for most [many] lawn and garden uses
26. Can be used for habitat restoration, controlling exotic vegetation, and for site preparation of wildlife food plots
27. Can reseed or sod lawn 7 days after treatment
28. Deactivates in soil
29. Does not have soil activity
30. Fast-acting formula
31. Fast-acting formula absorbs to root more quickly
32. Fast-acting for visible results in 6 hours
33. Glyphosate targets an enzyme found in plants but not in people or pets
34. [NS-515/This product] can be used [almost] anywhere weeds and grasses grow, including patios, walkways, and driveways; along fences; in landscaping beds; or around flowers, shrubs and trees
35. Multipurpose grass and broadleaf weed control
36. No odor
37. Quick-action formula
38. Replant [lawn grasses, herbs, vegetables (all), and fruits] 7 days after application
39. Works only when absorbed by the foliage of weeds

Characteristics

40. Covers [Treats up to] XXXX square feet/sq. ft.
41. Economical
42. One/1 [bottle size] covers/treats up to XXXX square feet/sq. ft.
43. Spray weeds [Use] in flowerbeds, around trees, shrubs and around fences, and on patios, paths, sidewalk cracks, walkways, driveways, and other areas in our yard
44. [Use] For Brush Control
45. [Use] For General Weed Control: Use along fences, paths, patios, sidewalks and driveways, around trees, shrubs, ornamental plantings, flowerbeds, and buildings, and in brick and gravel walkways.
46. Use to trim and edge landscape areas
47. [Use] For Spot Spraying: Use in and around flowerbeds, ornamental trees, shrubs, fences, driveways and walkways
48. [Use] For Stumps
49. Use to prepare sites: for large plantings, for planting flowerbeds, fruit trees, ornamental, vegetable and gardens, and for renovating lawns

NOTE:

Bold, italicized text is information for the reader and is not part of the label.
[Bracketed information is optional text]. Text separated by / denotes and/or options.

EPA Reg. No. 239-ETEG

14/
16

Weather & Speed

50. Dead [weeds] in a day
51. Even if it rains – [this product or *insert brand name*] won't lose its effectiveness.
52. For control that doesn't [won't] wash away
53. Next day [this weekend] results: Begin killing on contact, visible results in 6 hours
54. Once it enters the plant, it won't wash off
55. Rain Fast in hours [10, 30, XX] – enters the plant on contact
56. Rainproof
57. Rainproof in [10, 30, XX minutes] [for control that won't wash away]
58. [See] [Visible] results in hours [overnight] [1 day] [days]
59. Speeds absorption to the root for complete kill
60. Starts to kill in X hours
61. Starts working immediately [in hours]
62. Visible effects and gradual wilting and yellowing advancing to complete browning and root destruction.
63. [Provides] Visible [see] results in [X hours] [days]
64. Won't wash off [away]
65. Works first time, every time
66. Works in X hours
67. Works overnight

Applicator Claims

68. [Applicator name]
69. [Ergonomic] [Comfort] grip [handle]
70. [Requires] no measuring, [no mixing]
71. [The] Easy way to spray
72. Convenient [simple] design
73. Easy [and simple] to use
74. Hands stay dry
75. No messy clean-up
76. Quick & Easy [to use]
77. Quick, convenient, and mess free
78. Save[s] time [and energy]

Other

79. *Open booklet for details.
80. *When used as directed
81. Before [Illustration]/After [Illustration]
82. Dead Weeds Guaranteed [or Your Money Back]
83. For Home Lawn Use [Only]
84. Guaranteed [Results]*
85. Guaranteed same effective results even if it rains within hours
86. Guaranteed effective: Kills over [XXX] types of weeds and grasses, roots and all, with just one application
87. Guaranteed [We guarantee it]
88. Guaranteed Satisfaction

15/16

NOTE:

Bold, italicized text is information for the reader and is not part of the label.

[Bracketed information is optional text]. Text separated by / denotes and/or options.

EPA Reg. No. 239-ETEG

- 89. New/Now *(The following claim may appear on any label panel for 6 months following commercial introduction.)*
- 90. No root. No weed problem.
- 91. Read entire label before use
- 92. Satisfaction guaranteed
- 93. XX% more than X gallon size

1

16/16

NOTE:

EPA Reg. No. 239-ETEG

Bold, italicized text is information for the reader and is not part of the label.
[Bracketed information is optional text]. Text separated by / denotes and/or options.

Optional Instructions for Side Clip Tape

Open Resealable Label for Directions and/ & Precautions
Press to Reseal
PULL / PEEL HERE [TO REMOVE TAPE]

Questions & Comments: [icon phone] [icon computer]
Call 1-800-xxx-xxxx or Visit our Website at www.ortho.com

NOTICE: To the extent consistent with applicable law, the buyer assumes all risks of use, storage or handling of this product not in accordance with label directions.

The ORTHO Guarantee

If for any reason you, the consumer, are not satisfied with this product, mail us your original proof of purchase to obtain a full refund of your purchase price.

Ortho and Your Environment – Your yard is a place for family and pets to enjoy. That’s why Ortho products are designed with care to provide effective solutions to weed problems. Please follow instructions for appropriate usage, storage and disposal.

EPA Reg. No. 239-XXXX
EPA Est. No. 239-XX-X
[Superscript is first letter of lot number]

Manufactured [by]/for/ [Sold by]/ Distributed by]:
The ORTHO Group
Post Office Box 190
Marysville, OH 43040

[©2014, Licensed by] The ORTHO Group/Company Name World Rights reserved]

[Product of] [Made in] [Country Name] [USA]