

4 FTEK
P# 25 251 -
1995

ROUNDUP® Grass & Weed Killer

[Graphic Icon]
Outdoor use only

(ABN
Kleeraway Grass & Weed Killer,)

READY-TO-USE

REQUIRES NO MIXING

SYSTEMIC GRASS AND WEED KILLER FOR SPOT TREATMENT OF UNDESIRABLE VEGETATION

KILLS LABELED WEEDS AND GRASS, ROOTS AND ALL

DOES NOT HAVE SOIL ACTIVITY

SUITABLE FOR USE AROUND FLOWER BEDS, TREES, SHRUBS, FENCES, WALKS AND SPOT TREATMENT IN LAWNS

Ornamental gardens can be reseeded or replanted 1 day after treatment

New, Improved Formula

See Results in 24 hours

New Quick Connect Sprayer

Quick Click Sprayer

Now with quick connect sprayer

Quick & easy to use

New quick connect sprayer

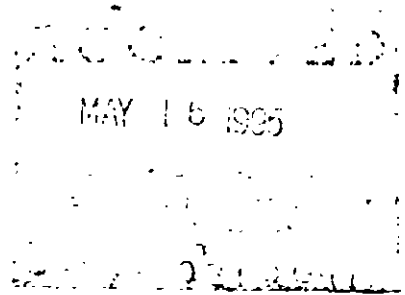
Easy to store

No leaks or mess

See back for instructions

Fast Acting Formula

New Formula



Active Ingredient

Glyphosate, N-(phosphonomethyl)glycine,

in the form of its isopropylamine salt 0.75%

Inert Ingredients 99.25%

Keep out of reach of children

CAUTION

See back panel for Precautionary Statements and Directions for Use.

NET CONTENTS: 24 fl oz (1 pt 8 oz) 709mL

239-2641.wp1
524-472 EPA APP. Oct 4, 1994
Transfer of to Reg. No 239-2641 112/28/94
Draft for kleeraway rtu April 7, 1995

1 of 3

April 7, 1995

BACK PANEL

Kleeraway Grass & Weed Killer,

Fast Acting ready to use weed killer. See results in 24 hours. Kills tough weeds in 1 to 2 weeks - roots and all. Use in flower beds, around trees, shrubs, walks, driveways, along fences, driveways, patios, sidewalks, and mulch. Will not build up in the soil to hurt plants growing nearby.

Now with quick connect sprayer.

1. Pull sprayer from bottle.
2. Pull (color) hose connector and coil from sprayer handle.
3. Insert hose connector into (color) spout on cap until it clicks in place.
4. Flip up spout. Turn sprayer nozzle to open, and spray.

DIRECTIONS FOR USE

It is a violation of Federal law to use this product in a manner inconsistent with its labeling. Read the entire label before using this product. Use only according to label instructions.

WHEN TO USE

Apply when weeds are actively growing. For best results, apply on a sunny day when daytime temperature is at least 60° F. Apply only when the air is calm. Warm, sunny weather will speed up weed control. Reapply if it rain within 6 hours of application. Hard-to-control weeds (such as bermudagrass) may require a repeat application, if they regrow.

HOW TO USE

Adjust the nozzle to a coarse spray. Position sprayer tip approximately 1 - 2 feet from the weed. Spray weeds until foliage is wet. Avoid overspraying that results in runoff. Flowers or ornamentals may be reseeded or replanted into treated areas the next day.

IMPORTANT: Spray carefully. Avoid spray or drift contact with desirable lawn grasses, shrubs or trees. This product can kill or damage all vegetation contacted. If accidental spray contacts desirable foliage, immediately rinse the foliage with water.

WEEDS CONTROLLED such as Bahiagrass, Barnyardgrass, Bermudagrass, Canada Thistle, Chickweed, Common Ragweed, Crabgrasses, Dandelion, Fescues, Field Bindweed, Field Sandbur, Foxtail, Johnsongrass, Kentucky Bluegrass, Lambsquarters, Orchardgrass, Perennial Ryegrass, Quackgrass, Red Clover, Shepherdspurse, Smooth Bromegrass, Sowthistle, White Clover and Yellow Nutsedge.

STORAGE AND DISPOSAL

STORAGE: Use and store this product only in its original container. Store product in a secure storage area. Protect product from freezing.

DISPOSAL: To dispose of unused product, securely wrap original container in several layers of newspaper and discard in trash. In case of SPILL or LEAK, soak up with paper towels and discard in trash. Do not reuse container. Rinse thoroughly before discarding in trash.

PRECAUTIONARY STATEMENTS

HAZARDS TO HUMANS AND DOMESTIC ANIMALS

CAUTION Wash thoroughly with soap and water after handling. Keep children and pets off treated area until spray is thoroughly dry. **Note to Physicians:** Emergency Information call 1-800-454-2333.

ENVIRONMENTAL HAZARDS

Do not apply directly to water. Do not contaminate water when disposing of equipment washwaters.

NOTICE: Buyer assumes all responsibility for safety and use not in accordance with directions.

This product is protected by U.S. Patent No. 4,405,531. Other patents are pending. No license granted under any non-U.S. patent.

REPACKAGING OR REFORMULATION FOR SALE IS PROHIBITED

- ▣ Medical Information call 1-800-454-2333
- ▣ Product Information call 1-800-225-2883.

- Trademarks of Monsanto Company
- MONSANTO COMPANY 1995

Manufactured for
The SOLARIS Group of
MONSANTO COMPANY
P. O. Box 5008
San Ramon CA 94583-0808
Form No. RS868-A / Product _____
EPA Reg. 239-2641
EPA Est 56100-LA-01⁹, 239-IA-3¹
Superscript is first letter of lot number