



UNITED STATES ENVIRONMENTAL PROTECTION AGENCY  
WASHINGTON, DC 20460

OFFICE OF CHEMICAL SAFETY  
AND POLLUTION PREVENTION

March 9, 2021

Mandy Slack  
Sr. Analyst, Regulatory Affairs  
The Scotts Company d/b/a/ The Ortho Group  
PO Box 190  
Marysville, OH 43040

Subject: Registration Review Label Mitigation for Fluazifop-P-butyl  
Product Name: Grass-B-Gon Grass Killer Formula II  
EPA Registration Number: 239-2620  
Application Dates: 11/06/2020  
Decision Numbers: 568385

Dear Ms. Slack:

The Agency, in accordance with the Federal Insecticide, Fungicide and Rodenticide Act (FIFRA), as amended, has completed reviewing all the information submitted with your application to support the Registration Review of the above referenced product in connection with the Fluazifop-P-butyl Interim Decision, and has concluded that your submission is acceptable. The label referred to above, submitted in connection with registration under FIFRA, as amended, is acceptable.

Should you wish to add/retain a reference to the company's website on your label, then please be aware that the website becomes labeling under the Federal Insecticide Fungicide and Rodenticide Act and is subject to review by the Agency. If the website is false or misleading, the product would be misbranded and unlawful to sell or distribute under FIFRA section 12(a)(1)(E). 40 CFR 156.10(a)(5) list examples of statements EPA may consider false or misleading. In addition, regardless of whether a website is referenced on your product's label, claims made on the website may not substantially differ from those claims approved through the registration process. Therefore, should the Agency find or if it is brought to our attention that a website contains false or misleading statements or claims substantially differing from the EPA approved registration, the website will be referred to the EPA's Office of Enforcement and Compliance.

A copy of your label stamped "Accepted" is enclosed. Products shipped after 12 months from the date of this amendment must bear the new revised label. Your release for shipment of the product bearing the amended label constitutes acceptance of these conditions. If these conditions are not complied with, the registration will be subject to cancellation in accordance with FIFRA section 6.

Page 2 of 2  
EPA Reg. No. 239-2620  
Decision No. 568385

If you have any questions about this letter, please contact Quinn Gavin by phone at 703-347-0325, or via email at [gavin.quinn@epa.gov](mailto:gavin.quinn@epa.gov).

Sincerely,

A handwritten signature in blue ink, appearing to read "Linda Arrington".

Linda Arrington, Branch Chief  
Risk Management and Implementation Branch 4  
Pesticide Re-Evaluation Division  
Office of Pesticide Programs

Enclosure

NOTE:

***Bold, italicized text is information for the reader and is not part of the label.***

[Bracketed information is optional text]. Text separated by/ denotes and/or options.

EPA Reg. No. 239-2620

[Outdoor Icon] [Outdoor Use Only]

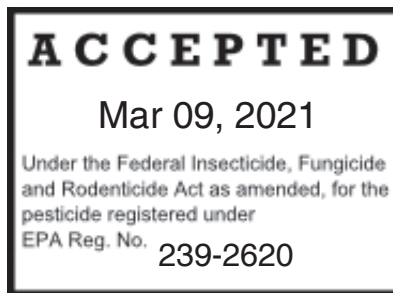
# GRASS-B-GON GRASS KILLER FORMULA II

## **ALTERNATE BRAND NAMES**

Ortho Grass-B-Gon Garden Grass Killer

Ortho Grass-B-Gon Grass Killer Formula II

Ortho Grass-B-Gon Grass Killer For Landscapes Ready-To-Use



## ACTIVE INGREDIENT:

Fluazifop-P-butyl: Butyl(R)-2-[4-[[5-trifluoromethyl-2-pyridinyl]oxy]- phenoxy] propanoate .....	0.48%
---	-------

OTHER INGREDIENTS: .....	99.52%
--------------------------	--------

TOTAL .....	100.00%
-------------	---------

**KEEP OUT OF REACH OF CHILDREN**

**CAUTION**

See [back] [side] [other] [panel] [booklet] for additional precautionary statements

NET CONTENTS 24 fl oz /710 ml, 8 fl oz/237 ml

NOTE:

EPA Reg. No. 239-2620

***Bold, italicized text is information for the reader and is not part of the label.***

[Bracketed information is optional text]. Text separated by/ denotes and/or options.

## PRECAUTIONARY STATEMENTS

### HAZARDS TO HUMANS & DOMESTIC ANIMALS

**CAUTION:** Causes eye irritation. Avoid contact with eyes or clothing. Wear long-sleeved shirt, long pants, shoes and socks, and PVC gloves when spraying. Wash thoroughly with soap and water after handling.

**FIRST AID:** If in eyes: Hold eye open and rinse slowly and gently with water for 15-20 minutes. Remove contact lenses, if present, after the first 5 minutes, then continue rinsing eye. Call a poison control center or doctor for treatment advice.

Have the product container or label with you when calling a poison control center or doctor, or going for treatment.

**Note to Physicians:** Emergency information call 1-877-465-5161

### ENVIRONMENTAL HAZARDS

This pesticide is toxic to fish and aquatic invertebrates. Do not apply directly to water, or to areas where surface water is present or to intertidal areas below the mean high water mark. Drift and runoff may be hazardous to aquatic organisms in water adjacent to treated areas. To protect the environment, do not allow pesticide to enter or run off into storm drains, drainage ditches, gutters or surface waters. Applying this product in calm weather when rain is not predicted for the next 24 hours will help to ensure that wind or rain does not blow or wash pesticide off the treatment area. Rinsing application equipment over the treated area will help avoid run off to water bodies or drainage systems.

**GROUND WATER ADVISORY:** This chemical has properties and characteristics associated with chemicals detected in groundwater. This chemical may leach into groundwater if used in areas where soils are permeable, particularly where the water table is shallow.

**SURFACE WATER ADVISORY:** This product may impact surface water quality due to runoff of rain water. This is especially true for poorly draining soils and soils with shallow ground water. This product is classified as having a high potential for reaching surface water via runoff.

**NON-TARGET ORGANISM ADVISORY:** This product is toxic to plants and may adversely impact the forage and habitat of non-target organisms, including pollinators, in areas adjacent to the treated site. Protect the forage and habitat of non-target organisms by following label directions intended to minimize spray drift

NOTE:

EPA Reg. No. 239-2620

***Bold, italicized text is information for the reader and is not part of the label.***

[Bracketed information is optional text]. Text separated by/ denotes and/or options.

[OPEN]

[Resealable Label For Directions & Precautions]

[Peel Open For Use Directions and Further Information]

## DIRECTIONS FOR USE

It is a violation of Federal law to use this product in a manner inconsistent with its labeling.

### SPRAY DRIFT ADVISORIES

#### HAND HELD TECHNOLOGY APPLICATIONS

Take precautions to minimize spray drift.

[Grass-B-Gon Grass Killer Formula II] [Brand Name] is a ready-to-use selective systemic grass killer that can be used to kill existing weedy grasses in and around ground covers, plant beds, landscapes, and individual shrubs and trees.

### *Optional "Product Facts Table"*

***Note to PM: the table may be included inside or outside of the Directions for Use***

PRODUCT FACTS	
<b>KILLS GRASSES</b>	<p>Controls most grasses including Annual Bluegrass, Bentgrass, Bermudagrass, Crabgrass, Downy Brome, Foxtails, Goosegrass, Johnsongrass, Panicum, Quackgrass, Sandbur and [any other listed weeds] [many other annual and perennial grassy weeds].</p> <p>See inside booklet for other grasses controlled.</p> <p>Note: The product does not control broadleaf weeds or sedges. Select an appropriate [Ortho Weed-B-Gon®] [Brand Name] product.</p>
<b>WHERE TO USE</b>	Use in and around ground covers, plants beds, landscapes, shrubs and trees*

\*Won't harm ornamental plants when used as directed.

<b>WEEDY GRASSES CONTROLLED</b>	<p>Controls most annual and hard-to-kill perennial grasses including the examples listed below in one (or two) applications(s). Younger, actively growing seedling weeds are more easily killed than older, mature, well-established grassy weeds.</p> <p>[Annuals:] Annual Bluegrass (<i>Poa annua</i>), Barnyardgrass, Crabgrass, Downy Brome, Foxtails, Goosegrass, Panicum, Sandbur</p> <p>[Perennials:] Bahiagrass, Bentgrass, Bermudagrass, Centipedegrass, Dallisgrass, Johnsongrass, Kentucky Bluegrass, Nimblewill, Orchardgrass, Perennial Ryegrass, Quackgrass, St. Augustinegrass, Tall Fescue</p> <p>Note: This product does not control broadleaf weeds or sedges (nutgrass). Select an appropriate [Brand Name] product.</p>
---------------------------------	---

NOTE:

EPA Reg. No. 239-2620

**Bold, italicized text is information for the reader and is not part of the label.**

[Bracketed information is optional text]. Text separated by/ denotes and/or options.

<b>WHEN TO APPLY</b>	<ul style="list-style-type: none"><li>• Apply anytime weeds are actively growing.</li><li>• Warm, sunny weather will accelerate systemic movement from leaves and stems down to the roots to give complete kill.</li><li>• Do not mow or cut off tops of weeds before spraying.</li><li>• Do not apply if rainfall is expected soon after application.</li><li>• Growth of treated grasses stops soon after application.</li><li>• They turn yellow and die within one to four weeks depending on the grass species and weather conditions.</li><li>• Cool weather slows activity.</li></ul>
<b>HOW TO USE /APPLY</b>	<ul style="list-style-type: none"><li>• Hold sprayer close to weed (1 to 2 ft) with spray nozzle aimed at weed and away from face and just wet foliage.</li><li>• Make 2 applications 7 days apart for tough to control weedy grasses such as established Bermudagrass, Crabgrass, and Quackgrass.</li><li>• Repeat if necessary.</li><li>• Spray when air is calm to avoid drift to non-labeled plants.</li><li>• If an unlisted plant is accidentally contacted, wash off immediately with water.</li><li>• Unless the ornamental plant is listed in the table under those plants which you can spray over the top, always direct the spray to the weeds to avoid possible injury to the foliage.</li></ul>

#### **SPRAYER APPLICATOR LANGUAGE SECTION**

**NOTE TO PM: Spray Pattern Descriptor is any word used to describe the pattern such as flat, fan, coarse, or fine.**

**NOTE TO PM: Quotes around Directions are optional (i.e. "ON", "OFF")**

#### **Option 1 – Bottle attached trigger sprayer**

[Conventional Trigger RTU/Applicator Device/Applicator Name Directions/Instructions]

[If Applicator is not attached:][Remove cap [and seal], then insert applicator/sprayer in/into the bottle. Tighten applicator/sprayer to bottle/container/pouch]

**[HOW TO USE:]**

**[Spray]**

1. Turn sprayer nozzle to desired spray/spray pattern/foam/ setting/perimeter setting/ "On"/spray pattern descriptor.
2. Squeeze trigger [repeatedly] [to spray.]

**[Finish]**

1. [Turn sprayer nozzle to "OFF"/X.]

#### **Option 2- Hose attached trigger sprayer**

[Conventional Trigger Large RTU/Quick Connect Trigger Sprayer/Applicator/Applicator Name Directions/Instructions]

**[HOW TO USE:]**

**[Spray]**



1. Remove sprayer/Applicator Name from bottle/holster/holder/box/container/package [by sliding/pulling/pushing sprayer up/down/in/out].
2. [Remove cap/seal/cover on pouch/container/bottle spout/knob/fitment]
3. Unwrap/Uncoil hose and insert [[color] hose connector] into [color] spout/knob/opening/lid [on][bottle/pouch/container] [cap] [until it clicks].
4. [Flip up [color] spout until fully upright / Twist spout/knob to "ON" / Pull spout up Rotate hose connector [to

**Bold, italicized text is information for the reader and is not part of the label.**

[Bracketed information is optional text]. Text separated by/ denotes and/or options.

lock/engage/open/secure.].

5. Turn sprayer nozzle to desired spray/spray pattern/foam/ setting/perimeter setting/ "On"/spray pattern descriptor.
6. Squeeze trigger [repeatedly] [to spray.]

#### [Finish]]

1. [Turn sprayer nozzle to "OFF" / X.]
2. [DO NOT DISCONNECT HOSE CONNECTOR [FROM SPOUT/CAP/KNOB/OPENING].]
3. [Place sprayer back into holster/holder.]

**Alternate images**



#### [Option 3 – Pull 'N Spray

[Pull 'N Spray/Applicator/Applicator Device/Applicator Name Directions/Instructions]

#### [HOW TO USE:]



[Spray]]

1. Remove sprayer/Applicator Name from bottle/holster/holder/box/container/package [by sliding/pulling/pushing sprayer up/down/in/out]
2. [Remove cap/seal/cover on pouch/container/bottle spout/knob/fitment]
3. Unwrap/Uncoil hose and insert [[color] hose connector] into [color] spout/knob/opening/lid [on][bottle/pouch/container] [cap] [until it clicks].
4. [Flip up [color] spout until fully upright / Twist spout/knob to "ON" / Pull spout up Rotate hose connector [to lock/engage/open/secure].]
5. Turn sprayer nozzle to desired spray/spray pattern/foam/ setting/perimeter setting/ "On"/spray pattern descriptor.
6. Point sprayer away from body. Slowly pull ring at bottom of sprayer until it stops, and hold for two [2] seconds to fill sprayer.
7. Press trigger to spray.

#### [Finish]

1. [Turn sprayer nozzle to "OFF" / X.]
2. [DO NOT DISCONNECT HOSE CONNECTOR [FROM SPOUT/CAP/KNOB/OPENING].]
3. [Place sprayer back into holster/holder.]

#### Option 4 – Battery Hose Attached Sprayer

[Battery Powered Wand/Comfort Wand/Comfort Shot Wand/Applicator/Wand/Applicator Name Directions/Instructions]

#### [HOW TO USE:]



[Prep [Wand]]]

1. Remove sprayer/Applicator Name from bottle/holster/holder/box/container/package [by sliding/pulling/pushing sprayer up/down/in/out].
2. [Remove [color] pull strip to activate batteries].
3. [Unfold / Flip Open [Applicator Name/applicator/wand] until it clicks/locks into position.]
4. [Extend wand/applicator/nozzle] [fully].

[Connect]]



1. [Remove cap/seal/cover on pouch/container/bottle spout/knob/fitment]
2. Unwrap/Uncoil hose and insert [[color] hose connector] into [color] spout/knob/opening/lid [on][bottle/pouch/container] [cap] [until it clicks].
3. [Flip up [color] spout until fully upright / Twist spout/knob to "ON" / Pull spout up / Rotate hose connector [to lock/engage/open/secure].]

[Spray]]



1. Turn sprayer nozzle to desired spray/spray pattern/foam/ setting/perimeter setting/ "On"/spray pattern descriptor.

**Bold, italicized text is information for the reader and is not part of the label.**

[Bracketed information is optional text]. Text separated by/ denotes and/or options.

2. [Slide [color] switch on trigger to “Unlock”].
3. Press trigger to spray.

[Finish][

1. [Turn nozzle to “OFF”/X].
2. [Slide [color] switch on trigger to “Lock”].
3. [Fold [Applicator Name/wand/applicator] closed [and place sprayer/wand back in holster/holder].]

**Important Use Information:** Do not submerge in water. When storing sprayer for long periods, remove batteries.

[To replace batteries: See marked diagram inside battery compartment.]

### Option 5 – Pump Container with Applicator

[Pump ‘n Go/EZ Sprayer/Applicator/Applicator Device/Applicator Name Directions/Instructions]

[HOW TO USE:][HOW TO ASSEMBLE AND USE INSTRUCTIONS][FOR][Pump ‘n Go/Applicator Name]

[CUT][

1. [Carefully cut the [two] [color] zip tie[s] securing hose and pump handle with scissors, using caution not to cut [color] hose.]

[CONNECT][

2. [Unwind hose.][Firmly push the [hose] connector at the end of the hose onto the [color] spout/cap/knob/opening on the pump [, until it locks into place].]

[PREP [WAND/SPRAYER]][Extend Wand][

Lift sprayer [wand] off bottle. Push [color] button while pulling out on the sprayer/wand nozzle tip. Fully extend wand/sprayer until [color] button snaps into SPRAY POSITION. NOTE: [Color] Trigger will not function until wand is fully extended and [color] button is visible in the SPRAY POSITION.

[PUMP][

Make sure handle is screwed on tightly [, or the bottle will not pressurize]. Pump container 25-30 [X-X] times to pressurize bottle. A full bottle requires fewer pumps than an empty bottle. Pumping to the higher range will provide longer spray duration. After pumping, push pump down and turn handle clockwise/counterclockwise to lock into carrying position.

NOTE: This bottle is designed to expand under pressure and cannot be over-pressurized.

[SPRAY][

Aim wand/sprayer. Spray by pushing down [color] trigger with thumb. Adjust spray pattern by rotating [color] nozzle tip up to one-half rotation.

[FINISH][STORE][

[When finished spraying,] push the [color] button and retract/fold the wand/sprayer until the [color] button snaps back into the original storage position. Place wand/sprayer back onto the top of the bottle [in the integrated holster with nozzle tip extended through the eyelet opening].

[DEPRESSURIZE][



**Bold, italicized text is information for the reader and is not part of the label.**

[Bracketed information is optional text]. Text separated by/ denotes and/or options.

Push pump handle all the way down and turn pump handle and cap counter-clockwise/clockwise to relieve pressure, then retighten to store.-

**Option 6 - Squeeze**

[Applicator Name/Applicator Directions/Instructions]

[HOW TO USE/APPLY] *Alternative Text:* [HOW TO ASSEMBLE AND USE INSTRUCTIONS]:

[Open:]

1. [Twist off cap and remove foil liner.]
2. [Replace cap.]
3. Flip/Twist/Open Cap

[Spray:]

1. To BEGIN spraying, invert the bottle and point/aim/direct [at the insect/or area of application]
2. Squeeze the bottle [to initiate the flow of product.]
3. Spray only until the surface is wet. / Spray evenly

[Finish:]

1. [To STOP spraying, release pressure / turn bottle upright]

[Flip/twist/close the cap [until you hear an audible snap / until secure].

**Option 7 – Flairosol**

[Applicator Name/Applicator Directions/Instructions]

[HOW TO USE:]

[Prep]

1. [Before first use prime the trigger by pumping/squeezing it [several/a few times]]
2. [Slide/Press [color] switch/button [on trigger] to “Unlock”].

[Spray/Apply]

1. Squeeze/pump/pull/press trigger/button to release spray/mist
2. Spray [directly] onto/at insects/bugs or onto surfaces

[Finish]

1. [When empty purchase refill bottle & reuse [trigger] sprayer]

**Option 8 – Integrated Primo Wand**

[Battery Powered/Comfort/Ergo [Shot] Wand/Applicator/Applicator Name Directions/Instructions]

[HOW TO USE:]

[Prep [Wand]]

1. [Unsnap/Unsecure/Unlock wand/applicator and Extend wand/applicator [upward/fully][until it clicks into place]]
2. [Remove [color] pull strip to activate batteries].

[Spray]

1. Turn sprayer nozzle to desired spray/spray pattern/foam/ setting/perimeter setting/ “On”/spray pattern descriptor.
2. [Slide [color] switch on trigger to “Unlock”].
3. Press trigger to spray.

[Finish]

1. [Turn nozzle to “OFF”/X].
2. [Slide [color] switch on trigger to “Lock”].
3. [Fold [Applicator Name/wand/applicator] closed]

**Important Use Information:** When storing sprayer for long periods, remove batteries.

[To replace/change batteries: Remove sprayer head/applicator from bottle by rotating clockwise/counterclockwise to access battery compartment. See marked diagram inside battery compartment.]

NOTE:

EPA Reg. No. 239-2620

**Bold, italicized text is information for the reader and is not part of the label.**

[Bracketed information is optional text]. Text separated by/ denotes and/or options.

**Optional Troubleshooting Section for Options 4 and 8**

**Troubleshooting Tips:**

Problem: Sprayer does not spray [function].

Possible Cause: Batteries not installed properly.

Solution: See instructions for correct battery placement.

Problem: Sprayer makes a straining noise [Sprayer runs but nothing [no product] comes out].

Possible Cause: Sprayer nozzle is turned off.

Solution: Turn sprayer nozzle to [desired] spray setting [position].

Possible Cause: [Red] [color] hose connector is not flipped up.

Solution: Insert [color] hose connector into [color] spout/knob/opening on bottle cap until it clicks and flip up spout until fully upright.

Possible Cause: Sprayer is not primed.

Solution: Press and hold button on sprayer for about X (10 / 15 / 20 / 30) seconds to prime sprayer.

Problem: Spray pattern is weak [or uneven] [product flow is uneven or dribbles out of nozzle].

Possible Cause: Weak batteries.

Solution: Install fresh set of batteries.

Possible Cause: [Red] [color] hose connector is not flipped up.

Solution: Insert [color] hose connector into [color] spout/knob/opening on bottle cap until it clicks. [Attach coupler to the cap] and flip up spout until fully upright.

Possible Cause: Sprayer nozzle not fully open.

Solution: Turn sprayer nozzle to [desired] spray setting [position].

**End of Optional Troubleshooting Section for Options 4 and 8**

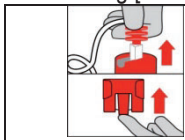
**Refill/Applicator Reuse Options**

**Option 1 – Applicator Reuse**

**[Applicator Name/Wand] REFILL/REUSE DIRECTIONS**

How to attach applicator name/wand to Grass-B-Gon Grass Killer Formula II /Product Name/refill/recharge/renew/fill-up/reload/ bottle/container:

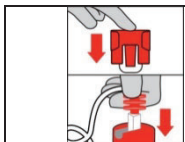
Removing [color] hose/Comfort Wand/Applicator Name from original bottle/container:



Remove the [color] hose connector from the original bottle/container/pouch by pulling the [color] plug from the [color] spout [on cap].

[To remove the side holster/holder from original bottle/container/pouch, pull/lift the bottom tab underneath and slide the holster/holder up.]

Adding [color] hose/Comfort Wand/Applicator Name to Grass B Gon Grass Killer Formula II/Product Name/refill/recharge/renew/fill-up/reload/bottle/container:



[Attach the sprayer holster/holder to Grass B Gon Grass Killer Formula II/Product Name/refill/recharge/renew/fill-up/reload/bottle/container by sliding the holster/holder down onto the knob.]

Insert [color] hose connector into [color] spout [on cap] [until it clicks].

**OR**

**[Applicator Name/Flairosol] REFILL:** This bottle/container may be refilled with Grass B Gon Grass Killer Formula II/Product Name. To refill twist/snap Grass B Gon Grass Killer Formula II/Product Name into/onto spray/applicator nozzle/top.

**OR**

**[Applicator Name/Flairosol] REFILL/REUSE DIRECTIONS**

How to attach Applicator Name/Flairosol to Grass B Gon Grass Killer Formula II/Product Name/refill/recharge/renew/fill-up/reload/bottle/container:

NOTE:

EPA Reg. No. 239-2620

***Bold, italicized text is information for the reader and is not part of the label.***

[Bracketed information is optional text]. Text separated by/ denotes and/or options.

Remove sprayer/applicator/top from the empty container/bottle by rotating it clockwise/counter clockwise.  
Place sprayer/applicator/top on the refill container and rotate it clockwise/counter clockwise [until it is secure].

**OR**

Remove sprayer/applicator/top from the empty container by pulling the bottle/container down/out.  
Place sprayer/applicator/top on the refill container/bottle and push up on the bottle/container [until it is secure].

**OR**

**Refill Container**

Use this product to refill the empty [insert brand name for GRASS B GON GRASS KILLER FORMULA II] container by pouring product carefully and directly into the container. DO NOT add water.

**HOW TO REFILL** For [Ready-To-Use] Containers with Applicators Intended to be Reused/Refilled To refill this empty container, pour product carefully and directly from the [insert brand name] container designated as the ready-to-use refill container. DO NOT add water

***Option 2 – Integrated Primo Wand Applicator Reuse***

**REFILL/REUSE DIRECTIONS / How to Reuse/Refill**

How to attach Applicator Name/integrated wand to Grass B Gon Grass Killer Formula II/Product Name/refill/recharge/renew/fill-up/reload/bottle/container:

1. Remove sprayer head/applicator from botte by rotating clockwise/counterclockwise and remove from empty bottle/container/pouch.
2. Remove cap/lid from Grass B Gon Grass Killer Formula II/Product Name/refill/recharge/renew/fill-up/reload/bottle/container/pouch.
3. [Remove Seal.]
4. Insert tube/straw into Grass B Gon Grass Killer Formula II/Product Name/refill/recharge/renew/fill-up/reload/bottle/container/pouch.

Secure the sprayer head/applicator from botte/container/pouch by rotating clockwise/counterclockwise

***Option 3 – Refill by pouring same RTU formula from Liquaflex refill package***

**[REFILL DIRECTIONS/INSTRUCTIONS]**

1. Do not reuse or refill this container/pouch. Use this product to refill the empty [Product name] container/bottle/pouch.
2. For best pouring experience place bag and refill bottle next to each other at waist height
3. Remove cap
4. Grasp [handle] with dominant hand
5. Place the other hand on the front side of the bag/pouch/container for stability
6. Carefully pour liquid into target container/bottle/pouch

***Option 4 – Refill by pouring same RTU formula into Pump Container with Applicator***

How to refill [Quick Pump/Pump 'N Go/Applicator Name] [using/with] [1.33 Gallon Ready-To-Use Refill/Grass B Gon Grass Killer Formula II/Product Name/refill/recharge/renew/fill-up/reload/bottle/container]:

1. Remove pump handle on Quick Pump/Pump N Go/Applicator Name by twisting it counterclockwise.
2. Remove cap from Grass B Gon Grass Killer Formula II/Product Name/refill/recharge/renew/fill-up/reload/bottle/container/pouch.
3. Pour product carefully and directly into [Quick Pump/Pump 'N Go/Applicator Name] container/bottle. Do Not fill above 2"/3"/4" from top of container/bottle. DO NOT add water.

Secure pump handle back on container by twisting it clockwise until tight.

## NOTE:

EPA Reg. No. 239-2620

**Bold, italicized text is information for the reader and is not part of the label.**

[Bracketed information is optional text]. Text separated by/ denotes and/or options.

<b>GROUND COVERS, FLOWERS, ORNAMENTALS, SHRUBS, AND SHADE TREES</b>	<p>To kill undesirable weedy grasses growing around the trunk or up through the foliage of the following plants, spray directly on the weeds, avoiding the desirable plant foliage as much as possible.</p> <p>The following plants are generally tolerant (will not be injured) although temporary discoloration of the foliage may occur occasionally on some of the listed plants if contacted by spray.</p>
<b>GROUND COVERS &amp; FLOWERS</b>	<p>Ajuga, Algerian Ivy, Cinquefoil (Potentilla), Coleus, Dichondra, English Ivy, Gazania, Geranium, Iris, Lilyturf, Marigold, Pachysandra, Periwinkle (Vinca Minor), Petunia, Rose, and Zinnia</p>
<b>LOW GROWING SHRUBS &amp; ORNAMENTALS</b>	<p>Azalea, Barberry, Boxwood, Cotoneaster, Crepe Myrtle, Euonymus, Forsythia, Gardenia, Juniper*, Photinia, Pittosporum, Privet (Ligustrum), Pyracantha,, Rhododendron, Spirea, Star Jasmine, Viburnum, and Yew (Taxus)</p> <p>*Juniper: Spray weedy grasses around and beneath junipers. Do not allow spray to contact foliage (needles), as browning may occur in some varieties.</p>
<b>TALL SHRUBS &amp; SHADE TREES</b>	<p>Arborvitae, Ash, Birch, Cherry (flowering), Crab Apple, Crepe Myrtle, Dogwood, Douglas Fir, Eucalyptus, Fir, Hemlock, Holly, Oak, Magnolia, (flowering), Maple, Mountain Ash, Peach (flowering), Pear (flowering), Pine, Plum (flowering), Quince, Redbud, Spruce, Sweet Gum, and Willow</p>
<b>NON-BEARING TREE CROPS AND VINES</b>  <b>(Plants that will not bear edible fruit for one year)</b>	<p>Direct spray around the base but away from foliage of desirable plants to contact weedy grasses. Should accidental contact be made to foliage, immediately wash off with water.</p> <p>Almonds, Apples, Apricots, Avocados, Berries, Cherries, Dates, Figs, Filberts, Grapes, Grapefruit, Lemons, Limes, Macadamia, Mangoes, Nectarines, Olives, Oranges, Peaches, Pears, Pecans, Pistachios, Plums, Pomegranates, Prunes, Tangelos, Tangerines, and Walnuts</p>

**STORAGE AND DISPOSAL**

**PESTICIDE STORAGE:** Keep from freezing. Keep pesticide in original container. Do not put concentrate or dilute into food or drink containers. Avoid contamination of feed and foodstuffs. Store in a cool, dry place, preferable in a locked storage area.

**Note to PM reviewer: Below is For Non-Refillable containers**

**PESTICIDE DISPOSAL AND CONTAINER HANDLING:** **If empty:** Nonrefillable container. Do not reuse or refill this container. Place in trash or offer for recycling if available. **If partly filled:** Call your local solid waste agency for disposal instructions. Never place unused product down any or outdoor drain.

***Bold, italicized text is information for the reader and is not part of the label.***

[Bracketed information is optional text]. Text separated by/ denotes and/or options.

**Note to PM: Below is For Refillable Containers**

**PESTICIDE DISPOSAL AND CONTAINER HANDLING:** [Applicator Name] can be reused with [Product Name refill bottle/container]. Follow instructions in the Reuse/Refill Directions [when reusing [applicator name]]. **If empty:** Place in trash or offer for recycling if available. **If partly filled:** Do not pour or dispose down-the-drain or sewer. Call your local solid waste agency for local disposal options. Never place unused product down any or outdoor drain.

**OPTIONAL MARKETING CLAIMS**

- After [image of landscape plants without weedy grasses]
- Before [image of landscape plants with weedy grasses]
- For use in and around Ornamentals, Ground Covers, Evergreens, Shrubs, Shade Trees, and non-bearing Tree Crops and Vines
- Guaranteed to kill weedy grasses, Roots and Tops, without injuring ornamental plants when used as directed
- Kills: Bermudagrass, Crabgrass, Barnyardgrass, Foxtails, Bentgrass, Quackgrass, Johnsongrass, Sandbur, and many other annual and perennial grassy weeds
- Kills [annual and perennial] grassy weeds
- Kills weedy grasses
- Kills weedy grasses without injuring ornamental plants †when used as directed.
- No mixing
- Ready-to-Use
- Use In and Around Groundcovers, Flowers, Landscape & Shrubs
- Water based [Icon of water drop]
- Won't harm landscape plants\* \*(Won't harm listed ornamental plants when used as directed.)
- [Applicator Name] Extends 2 feet - Continuous Spray
- 2x extended reach\* \*vs previous design
- [Applicator Name] - Continuous Spray
- [Comfort/Extended] Wand
- Extends 2 feet
- Continuous Spray
- Battery Image
- ALWAYS lock after use

**NOTICE:** To the extent consistent with applicable law, buyer assumes all risks of use, storage or handling of this product not used in accordance with directions.

**[Telephone icon] Questions, Comments [?]**

**Call 1-800-225-2883 [or] [Visit our website] [www.]ortho.com]**

[The Ortho Guarantee

If for any reason you are not satisfied with this product, mail us your original proof of purchase to obtain a full refund of your purchase price.]

**Environmental Stewardship Statement:** [Ortho & Your Environment – Your yard is a place for family and pets to enjoy. That's why Ortho products are designed with care to provide effective solutions to weed problems. For best results, please follow instructions for appropriate usage, storage and disposal.]

NOTE:

***Bold, italicized text is information for the reader and is not part of the label.***

[Bracketed information is optional text]. Text separated by/ denotes and/or options.

EPA Reg. No. 239-2620

[Manufactured for] [Sold by]  
The ORTHO Group  
P.O. Box 190  
Marysville, OH 43040

EPA Reg. No. 239-2620  
EPA Est. XXXXX  
[Superscript is first letter of lot number]

[Product of] [Made in] [Country Name] [USA]

©[Insert Year] Licensed by [Company Name]  
World rights reserved.