

111-14817-94

SHAKE WELL BEFORE USING

SHAKE WELL BEFORE USING

# ORTHO<sup>®</sup>



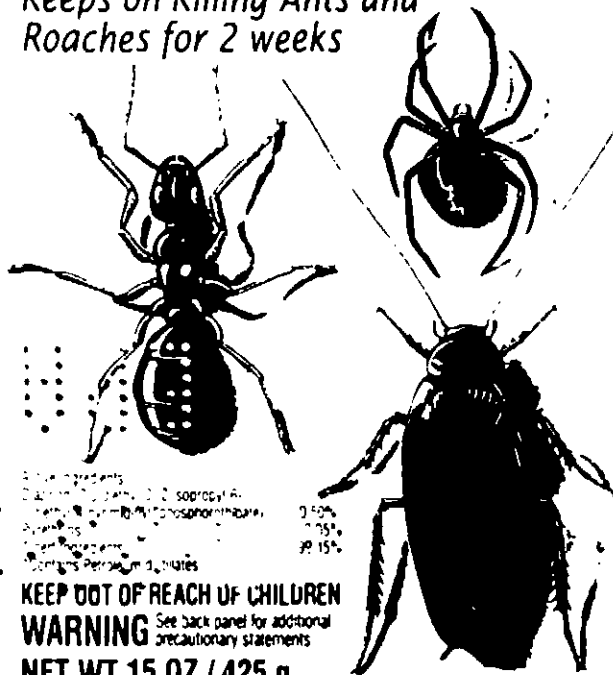
# ORTHO<sup>®</sup>

## HomeDefense™ Hi-Power® Brand Roach, Ant & Spider Killer

# HomeDefense™ Hi-Power® Roach, Ant & Spider Killer

### Kills Roaches, Ants, Spiders, Crickets, Silverfish, Fleas, Brown Dog Ticks, Carpet Beetles, and Earwigs

### Quickly Kills Pests on Contact; Keeps on Killing Ants and Roaches for 2 weeks



Active Ingredients: 2,4-Dichlorophenoxypropionitrile 0.50%, Cyfluthrin 0.05%, Permethrin 0.05%, PIPERONYL BUTOXIDE 1.50%, Pyrethrin 0.05%, Pyrethrum 0.05%, Resmethrin 0.05%, Resmethrin Sulfate 0.05%

**KEEP OUT OF REACH OF CHILDREN**  
**WARNING** See back panel for additional precautionary statements  
**NET WT 15 OZ / 425 g**

Provides rapid kill of crawling insects. In addition, the product stays on treated surfaces and provides residual killing power after the spray has dried. Controls: Cockroaches, Ants, Spiders (including Black Widow Spiders), Crickets, Firebrats, Silverfish, Brown Dog Ticks, Carpet Beetles, and exposed stages of stored product insects.

#### FOR HOME USE ONLY DIRECTIONS FOR USE

It is a violation of Federal law to use this product in a manner inconsistent with its labeling.

**READ ENTIRE LABEL. USE STRICTLY IN ACCORDANCE WITH LABEL PRECAUTIONARY STATEMENTS AND DIRECTIONS.**

**HOW TO USE:** Shake can before use. Point spray opening toward surface to be sprayed and press button firmly. Spray infested surfaces until slightly moist, moving the spray stream rapidly to prevent excessive wetting of surfaces and waste of material. Point spray away from people, plants and pets.  
**PRECAUTIONS:** This product is designed for spot treatments. Do not spray up into air. Apply to surfaces only. Do not use on plants. Remove or cover fish bowls (tanks) before spraying. Exposed food should be removed or covered during spraying or thoroughly washed with soap and water before use. Do not use in serving areas while food is exposed.

**FOR CONTROL OF:** Cockroaches, Ants, Spiders (including Black Widow Spiders), Crickets, Firebrats, and Silverfish - **SPOT TREATMENT:** Direct spray into cracks and crevices in walls, in closets, to baseboards, to surfaces behind and beneath cabinets, refrigerators, sinks, and stoves, and around plumbing and similar areas where these insects hide.

**FOR CONTROL OF:** Carpet Beetles - Spot treat along baseboards and edges of carpeting, under carpeting, rugs, and furniture, in closets and on shelving, and wherever these insects are seen or suspected.

**FOR CONTROL OF:** Brown Dog Ticks and Fleas - Spray around pet beds and resting quarters, nearby cracks and crevices, along baseboards, window and door frames, and localized areas of floor coverings where these pests may be. Pet bedding should be removed and cleaned or replaced after treatment. **DO NOT TREAT PETS WITH THIS PRODUCT.** To control the source of fleas, treat pets with ORTHO Pet, Flea & Tick Spray. Control adult fleas on areas treated.

**FOR CONTROL OF:** Exposed stages of stored product insects (including adults and larvae) such as Sawtoothed Grain Beetles, Indian Meal Moths, Rice Weevils, Mediterranean Flour Moths, and Red Flour Beetle - **SPOT TREAT** on shelves and in cupboards where food containers suspected of being infested are stored. Remove all food and shelving paper before spraying. Do not replace the food packages until spray has dried. Cover shelves with shelving paper. Discard infested food packages since this spray will have no effect on insects breeding within food packages.

#### STORAGE AND DISPOSAL

**STORAGE:** Store in a secure, cool dry place away from heat or open flame.

**DISPOSAL, PRODUCT:** Unused product may be disposed of by securely wrapping original container in several layers of newspaper and discard in trash.  
**CONTAINER:** Recycle this container where aerosol can recycling is available. If not yet available, replace cap and put in trash. Do not puncture or incinerate.



#### PRECAUTIONARY STATEMENTS

##### HAZARDS TO HUMANS & DOMESTIC ANIMALS

**WARNING:** Causes skin irritation. Harmful if inhaled. Avoid breathing vapor or spray mist. Use only in well ventilated areas. Causes moderate eye irritation. Do not get on skin or clothing. Wash thoroughly with soap and water after handling. If clothing becomes wet from spray during use, remove clothing after spraying, wash affected body areas thoroughly with soap and water, and launder clothing before wearing again. Do not use on people or pets or where children may frequently contact treated surface. Keep children and pets out of treated area until spray has dried. **FIRST AID:** If inhaled, Remove victim to fresh air. If not breathing give artificial respiration preferably through mouth. Get medical attention. In Eyes, Flush with plenty of water. Call a physician if irritation persists. If on Skin, Wash with plenty of soap and water. Get medical attention. **Note to Physicians:** Emergency information call 1-800-454-2333.

This product contains a light petroleum solvent and may present an aspiration problem. This is an organophosphate, insecticide. Symptoms of cholinesterase inhibition are present: atropine sulfate by injection is antidotal. 2-PAM is also antidotal and may be administered, but only in conjunction with atropine. **PHYSICAL OR CHEMICAL HAZARDS:** Contents under pressure. Do not use or store near heat or open flame. Do not puncture or incinerate container. Exposure to temperatures above 130°F may cause bursting.

**NOTICE:** Buyer assumes all responsibility for safety and use in accordance with directions.



Medical Information call 1-800-454-2333  
Product Information call 1-800-225-2883

SOLARIS™

A trademark of Monsanto Company  
©Monsanto Company 1994

Manufactured for  
The SOLARIS Group of Monsanto Company  
P.O. Box 5008 San Ramon CA 94583-0808  
Form S707 A / Product 1000-109  
EPA Reg. No. 239-2619  
EPA Est. 58996-MO-1  
Made in USA



ACCEPTED

MAY 24 1995

Under the Federal Insecticide, Fungicide, and Rodenticide Act, as amended, for the pesticide registered under EPA Reg. No. 239-2619