

395929

Mr. William Chase, Jr.  
Chevron Chemical Corporation  
Ortho Consumer Products Division  
P.O. Box 4010  
Richmond, CA 94804-0010

MAY 10 1991

Dear Mr. Chase:

Subject: Amendments - Add Hornets, Wasps, & Yellow Jackets;  
Additional Brand Name; and  
Revise electrical hazard precaution  
ORTHO HI-POWER Ant, Roach & Spider Spray Formula II  
EPA Reg. No. 239-2619  
Your submissions dated April 11 and 12, 1991

The amendments referred to above, submitted in connection with a registration under the Federal Insecticide, Fungicide, and Rodenticide Act, as amended, are acceptable provided the following revisions are made prior to release for shipment under the amended labeling.

1) The following proposed front panel claims are acceptable and may appear on the label:

Gives fast knockdown and kill of hornets, wasps,  
and yellow jackets  
Non-staining  
Jet spray - will reach nests up to 20 feet above ground  
Gives fast knockdown  
Effective on hornets, wasps, and yellow jackets  
Hornets, wasps, yellow jackets (illustrations)  
Jet spray  
Jet stream  
Quick knockdown

2) The following proposed front panel claims are not acceptable based on available product performance data or current EPA labeling policy:

Kills on contact  
Instant knockdown  
Contains no CFC's (chlorofluorocarbons)/or MCF (methylchloroform)  
Contains no ozone depleting compounds

- 3) Correct the spelling of "jackets" in the front panel claim "Effective on hornets, wasps, and yellow jackets".
- 4) In the new directions, revise the end of the first sentence to read "... when all of the insects have returned to the nest."

The Agency's records will be amended to show the additional brand name: ORTHO Hornet & Wasp Killer Formula III. Based on the fact that this use depends on the special spray nozzle, the Agency assumes that this brand name will only appear on packages that use the special nozzle and that contain only the hornet, wasp, and yellow jacket directions being accepted (with comments) by this letter for inclusion on the complete master product label.

A stamped copy of the label is enclosed for your records.

Sincerely yours,

George T. LaRocca  
Product Manager 13  
Insecticide/Rodenticide Branch  
Registration Division (H7505C)

ORTHO HI POWER ANT, ROACH & SPIDER  
SPRAY FORMULA II  
EPA REG. NO. 239-2619

COPY A

- o Gives fast knockdown and kill of hornets, wasps, and yellow jackets.
- o Non-staining.
- o Jet spray - will reach nests up to 20 feet above ground.
- o Gives fast knockdown.
- o Kills on contact.
- o Effective on hornets, wasps and yellow jackets.
- o Hornets, wasps, yellow jackets (illustrations).
- o Jet spray.
- o Jet stream.
- o Instant knockdown.
- o Quick knockdown.
- o Contains no CFC's (chlorofluorocarbons)/or MCF (methylchloroform).
- o Contains no ozone depleting compounds.

ACCEPTED  
with COMMENTS  
in EPA Letter Dated:

MAY 10 1991

Under the Federal Insecticide,  
Fungicide, and Rodenticide Act as  
amended, for the pesticide  
registered under EPA Reg. No.

239-2619

COPY B

Do not apply this product in conduits, motor housings, junction and switch boxes or other electrical equipment because of possible shock hazard.

COPY C

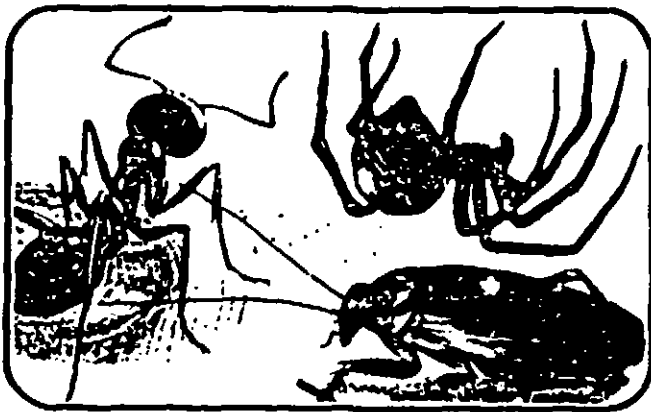
For control of hornets, wasps and yellow jackets (outdoors only): Apply after dark when all of the insects have returned to the nest. Remove protective cap. Hold container in upright position to spray. Aim valve opening at nest, hold at arm's length and depress button, soaking the entire nest with spray. Spray jet will reach nests up to 20 feet above ground. Repeat as necessary. Avoid spraying plant foliage as injury may occur. Do not use as a space spray.



# ORTHO

## HI-POWER™ Ant, Roach & Spider Spray Formula II

- Improved Formula
- Kills Ants, Roaches, Spiders, Crickets, Silverfish, Fleas, Brown Dog Ticks, Carpet Beetles, Earwigs, and other listed pests.
- For Use in Cracks and Crevices, along Baseboards, in Cabinets and Closets, on Carpets, and in Pet Quarters.
- Quickly Kills Pests on Contact; Keeps on Killing Ants and Roaches for 2 weeks with Residual Activity.
- For use in and around the home.



Keep out of reach of children

### CAUTION

See back panel for additional precautionary statements.

NET WT. 15 OZ.

Active Ingredients	By Wt.
Diazinon (0,0-diethyl-0-[2-iso-propyl-6-methyl-4-pyrimidinyl]phosphorothioate)	0.50%
Pyrethrins	0.05%
*Inert Ingredients	99.45%
*Contains Petroleum distillates	

## ORTHO HI-POWER™ Ant, Roach & Spider Spray Formula II

### PRECAUTIONARY STATEMENTS

#### A. AVOID CONTACT WITH HUMANS & DOMESTIC ANIMALS

**CAUTION:** Harmful if inhaled. Causes moderate eye irritation. Avoid contact with eyes, skin, or clothing. Avoid breathing spray mist. Wash thoroughly with soap and water after handling. If clothing becomes wet from spray during use, remove clothing after spraying, wash affected body areas thoroughly with soap and water, and launder clothing before wearing again. Do not use on household pets or humans. **STATEMENT OF PRACTICAL TREATMENT:** If inhaled, remove victim to fresh air. If on skin, wash with plenty of soap and water. If in eyes, flush eyes with fresh water for 15 minutes. **Note to Physicians:** Emergency information—call 1-800-451-2022. This product contains a light petroleum solvent and may present an aspiration problem. This is an organophosphate insecticide. If symptoms of cholinesterase inhibition are present, atropine sulfate by injection is antidotal. 2-PAM is also antidotal and may be administered, but only in conjunction with atropine. **ENVIRONMENTAL HAZARDS:** This pesticide is highly toxic to birds, fish, and other wildlife. Birds, especially waterfowl, feeding or drinking on treated areas may be killed. Keep out of lakes, streams, ponds, tidal marshes, and estuaries. Do not apply directly to water or wetlands (swamps, bogs, marshes, and potholes). Do not contaminate water by disposal. This pesticide is highly toxic to bees exposed to direct treatment or residues on blooming plants where they feed. Do not allow this pesticide to drift to blooming plants if bees are visiting the treatment area. Do not apply this product to, or allow it to drift to, food crops or any desirable vegetation at any time. **PHYSICAL OR CHEMICAL HAZARDS:** Contents under pressure. Do not use or store near heat or open flame. Do not puncture or incinerate container. Do not discard in trash compactor. Exposure to temperatures above 130°F may cause bursting.

**DIRECTIONS FOR USE:** It is a violation of Federal law to use this product in a manner inconsistent with its labeling.

**READ ENTIRE LABEL USE STRICTLY IN ACCORDANCE WITH LABEL PRECAUTIONARY STATEMENTS AND DIRECTIONS.**

ORTHO HI-POWER Ant, Roach & Spider Spray Formula II is a highly effective formulation which provides rapid kill of such crawling insects as listed below. In addition to rapid initial kill, this product stays on treated surfaces and provides residual insect killing power after the spray deposit has dried.

**HOW TO USE:** Spray infested surfaces until slightly moist, moving the spray stream rapidly to prevent excessive wetting of surfaces and waste of material. Paint spray away from people, plants, and pets. Do not spray food or food contacting surfaces.

**INDOORS—CONTROLS:** Cockroaches, Ants, Spiders (including Black Widow Spiders), Crickets, Firebrats, Silverfish, and exposed stages of stored product insects (including adults and larvae) such as Confused Flour Beetles, Saw-Toothed Grain Beetles, Indian Meal Moths, Rice Weevils, Mediterranean Flour Moths, and Red Flour Moths.

**PRECAUTIONS:** Do not use this product indoors as an overall surface spray or as a space spray. Take care not to introduce this product into the air during application. Use only in well-ventilated areas. Do not apply where children are likely to frequent or contact treated surface. Do not use on plants. Remove pets and remove or cover fish bowl (tanks) before spraying. Do not allow children or pets in treated areas until spray has dried. Exposed food should be removed or covered during spraying. All food preparation surfaces and utensils should be covered during spraying or thoroughly washed with soap and water before use. Do not use in edible product areas of food processing plants, restaurants or other areas where food or feed is commercially prepared or processed. Do not use in serving areas while food is exposed. **Do not use this product in conduits, meter housings, or electrical switch boxes.**

**FOR CONTROL OF Cockroaches, Ants, Spiders (including Black Widow Spiders), Crickets, Firebrats, and Silverfish—SPOT TREATMENT: WHERE TO SPRAY:** Direct spray into cracks and crevices in walls, in closets, in baseboards, to surfaces behind and beneath cabinets, refrigerators, stoves, and stoves, and around plumbing and similar areas where these insects tend to hide.

**FOR CONTROL OF Exposed stages of stored product insects (including adults and larvae) such as Confused Flour Beetles, Saw-Toothed Grain Beetles, Indian Meal Moths, Rice Weevils, Mediterranean Flour Moths, and Red Flour Moths—SPOT TREATMENT: WHERE TO SPRAY:** Spray on shelves and in cupboards where food containers suspected of being infested are stored. Remove all food and shelving paper before spraying. Do not replace the food packages until spray has dried. Cover shelves with shelving paper. This treatment is supplemental to good housekeeping, since it will have no effect on insects breeding within food packages. Infested food packages should be destroyed.

**FOR CONTROL OF Carpet Beetles—SPOT TREATMENT: WHERE TO SPRAY:** Spray in spot applications along baseboards and edges of carpeting, under carpeting, rugs, and furniture, in closets and on shelving, and wherever these insects are seen or suspected.

**FOR CONTROL OF Brown Dog Ticks and Fleas—SPOT TREATMENT: WHERE TO SPRAY:** Spray infested areas around pet beds and resting quarters, nearby cracks and crevices, along baseboards, window and door frames, and to localized areas of floor coverings where these pests may be present. Old bedding of pets should be removed and cleaned or replaced with clean, fresh bedding after the treatment of pet area. **DO NOT TREAT PETS WITH THIS PRODUCT.** To control the source of flea infestation, pets inhabiting the treated premises should be treated with ORTHO Pet, Flea & Tick Spray formula II.

**\*Controls adult fleas on areas treated.**  
**OUTDOORS—(For use as an aid in reducing annoyance from these insects):** Flies, Mosquitoes. Spray with the wind at your back. Spray outside surfaces of screens, doors, window frames or wherever these insects may enter. Also spray surfaces around light fixtures on porches, in garages, and other places where these insects alight or congregate. Repeat as necessary. Ants, Brown Dog Ticks, Crickets, Fleas, and Earwigs. Spray localized infestations of these insects in outdoor areas. Do not apply to lawns or other desirable plants. For Ants, wet their hills and runways. Repeat as necessary.

### STORAGE AND DISPOSAL

**STORAGE:** Store in a secure, preferably locked storage area away from heat or open flame. **DISPOSAL—PRODUCT:** Unused product may be disposed of by securely wrapping original container in several layers of newspaper and discard in trash.

**CONTAINER:** Replace cap and discard container in trash. Do not incinerate or puncture.

**NOTICE:** Buyer assumes all responsibility for safety and use not in accordance with directions.

Manufactured by  
Chevron Chemical Company © 1991  
Ortho Consumer Products Division  
P.O. Box 5047 San Ramon CA 94583-0947  
Form C209 A Product 1000 109  
EPA Reg. No. 239 2619 EPA Est. 54996-MD-1

