



ORTHO ISOTOX[®] Insect Killer Formula IV

NOT REVIEWED

In Accordance with PR Notice 02-2.
Based on Draft Labeling Dated 3/7/90



ORTHO ISOTOX[®] Insect Killer Formula IV

Makes Up
To 32 Gallons
Spray

PRECAUTIONARY STATEMENTS

HAZARDS TO HUMANS & DOMESTIC ANIMALS

DANGER: Causes irreversible eye damage and skin irritation. May be harmful if swallowed or absorbed through skin. Do not get in eyes, on skin or on clothing. Wear goggles. Wash thoroughly with soap and water after handling. Remove contaminated clothing and wash before reuse. **STATEMENT OF PRACTICAL TREATMENT:** If in eyes, hold eyelids open and flush with a steady gentle stream of water for 15 minutes. See a physician immediately if on skin, wash with plenty of water. Get medical attention if swallowed. Do not induce vomiting. Call a physician or Poison Control Center. Drink promptly a large quantity of milk, egg whites, gelatin solution, or if these are not available drink large quantities of water. Avoid alcohol. When handling this product, wear chemical resistant gloves, long pants, and long sleeved shirt. When using outdoors, spray with the wind to your back and do not use when wind speeds are 10 mph or more. Wash the outside of the gloves with soap and water before removing. Do not allow children or pets to come into contact with treated surfaces until sprays have dried. **Note to Physicians:** Probable mucosal damage may contraindicate the use of gastric lavage. Emergency Information - call 1-800-857-2022. **ENVIRONMENTAL HAZARDS:** This pesticide is toxic to birds. Do not apply directly to water or wetlands. Do not contaminate water by cleaning of equipment or disposal of wastes. Cover or soil incorporate spills. This product is highly toxic to bees exposed to direct treatment or residues on blooming crops or weeds. Do not apply this product or allow it to drift to blooming crops or weeds if bees are visiting treatment area. **PHYSICAL OR CHEMICAL HAZARDS:** Flammable. Keep away from heat and open flame.

DIRECTIONS FOR USE: It is a violation of Federal law to use this product in a manner inconsistent with its labeling. **READ ENTIRE LABEL. USE STRICTLY IN ACCORDANCE WITH LABEL PRECAUTIONARY STATEMENTS AND DIRECTIONS.**

HOW TO USE: Mix thoroughly and spray entire plant, covering both upper and lower leaf surfaces. May be applied with an ORTHO SPRAYETTE™, ORTHO DIAL N SPRAY™, Hose End Sprayer, tank type or power sprayer. Make new dilution for each use. This product is designed for outdoor use only by home gardeners. It has not been tested on rare, unusual varieties, therefore, when these plants are present, it is advisable to test on a few plants before spraying large numbers. Do not apply to plants to be used for food or feed. **Note:** Do not apply to American Elm, Flowering Crabapple, Sugar Maple, Red Maple, Redbud, Begonia and Weigela as foliage injury may occur.

Does not require the addition of wetting agents.
Rate to Apply - *Aphids and *Grasshoppers on Roses, Flowers, Ornamentals, Shrubs and Trees. Apply 2 Tbs (1 fl oz) to 1 gal water. Spray as aphids appear. Repeat if reinfestation occurs.

Mealybug/Aphid (Honey suckle): Apply full coverage spray to the foliage as leaves begin spring expansion. Repeat 2 weeks later with a third spray 4 weeks later.

Japanese Beetle on Roses, Linden and Boston Ivy: Apply 4 Tbs (2 fl oz) in 1 gal water. Begin spraying when beetles or their damage first appear and repeat at 7 to 10 day intervals for as long as needed.

All Other Listed Pests on Roses, Flowers, Ornamentals, Shrubs and Trees: Apply 3 Tbs (1 1/2 fl oz) to 1 gal water. Spray when insects or mites are present or feeding damage is first noticed. Repeat if reinfestation occurs. For Mealybugs, Flower Thrips, Whiteflies, Mites, Scales and other hard to control pests spray 2 to 3 times about 7 to 10 days apart. For best results, apply at first sign of infestation before population becomes large.

CONTROLS: *Aphids, Ash Plant Pug, Bagworm, Beet Armyworm, Birch Leafminer, **Black Vine Weevil, Budworms, Cabbage Looper, Catalpa Sphinx Moth (larvae), Cornwood Leaf Beetle, Cuban Laurel Thrips, Elm Leaf Beetle, Fall Cankerworm, Fall Webworm, Fuchsia Mite, *Grasshoppers, Gypsy Moth (larvae), Holly Leafminer, Lacebugs, Leafrollers, Leafhoppers, Lilac Leafminer, Maple Shoot Moth (larvae), Mimosa Webworm, Mealybugs, Nantucket Pine Tip Moth (larvae), Oak Webworm, **Obscure Root Weevil, Orangestriped Oakworm, Poplar Tentmaker, Psyllids, Saddle Prominent Caterpillar, Sawflies (Dusky Birch, Blackheaded Ash, Redheaded Pine and European Pine), Scales (crawlers), Spittlebugs, Spruce Mite, Spiny Thrips, Tent Caterpillars, Twospotted Spider Mite, Whiteflies, Willow Leaf Beetle. ****SPECIAL DIRECTIONS: BLACK VINE WEEVIL:** - Apply full coverage spray to foliage and soil beneath plants. Begin applications in mid June and make 3 additional applications at 3 week intervals. **OBSCURE ROOT WEEVIL:** - Apply full coverage spray to the foliage in late spring as soon as feeding is noticed (usually about May). Repeat every 4 weeks through September. (Mid July through August are the peak feeding times.)

COMBINATION SPRAY WITH FUNGICIDE ON ROSES: ISOTOX Insect Killer Formula IV may be used together with ORTHOCIDE (Captan) Garden Fungicide or ORTHO FUNGINEX® Rose Disease Control, or ORTHO Multi-Purpose Fungicide DACTONIL 2787® at the rates recommended on each product label. Apply fungicide on a regular schedule to control disease and add ISOTOX Insect Killer Formula IV only when insect control is desired. Do not apply more than three consecutive applications of ISOTOX Insect Killer Formula IV in combination with any of the above fungicides. Clean sprayer after each use by flushing with water, do not use household bleach as a cleaning agent.

STORAGE AND DISPOSAL

STORAGE: Store away from heat or open flame. Keep pesticide in original container. Do not put concentrate or dilute into food or drink containers. Avoid contamination of feed and foodstuffs. Store in a cool, dry place, preferably in a locked storage area. Do not store diluted spray.

DISPOSAL: PRODUCT: - Partially filled bottle may be disposed of by securely wrapping original container in several layers of newspaper and discard in trash.

CONTAINER: - Do not reuse empty bottle. Rinse thoroughly before discarding in trash.

NOTICE: Buyer assumes all responsibility for safety and use not in accordance with directions.

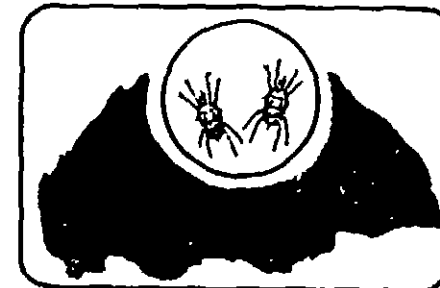
DACTONIL 2787® - Reg. TM of Fermenta Plant Protection Co. for Chlorothalonyl Fungicide.

Chevron Chemical Company © 1988
Ortho Consumer Products Division
P.O. Box 5047
San Ramon, CA 94583 0947
Product 5616
Form C113 E
EPA Reg. No. 239 2595
EPA Est. 239 MO 1



7 549 0802

6



Active Ingredients
***Acephate (O,S-Dimethyl acetylphosphorimidothioate) 8.0%
***Hexakis (2-Methyl-2-phenylpropyl)-distannoxane 0.5%
Inert Ingredients 91.5%
***ORTHENE®, Acephate US Pat. Nos. 3,716,600 & 3,914,417
***VENDEX® - Reg. TM of E.I. du Pont de Nemours & Co.

By Wt

CONTAINS ORTHENE[®]
SYSTEMIC INSECTICIDE
AND VENDEX[®] MITICIDE

ALSO CONTROLS
JAPANESE BEETLES

Keep out of reach of children

DANGER
See side panel for additional
precautionary statements.

NET CONTENTS 1 QT.

BEST AVAILABLE COPY