

Please read instructions on reverse before completing form. Form Approved. OMB No. 2070-0060. Approval expires 05-31-98



United States
Environmental Protection Agency
Washington, DC 20460

Registration
 Amendment
 Other

OPP Identifier Number
242548

Application for Pesticide - Section I

1. Company/Product Number 239-2514	2. EPA Product Manager Dennis Edwards, Jr.	3. Proposed Classification <input checked="" type="checkbox"/> None <input type="checkbox"/> Restricted
4. Company/Product (Name) GETA-BUG Snail, Slug & Insect Killer	PM# 19	
5. Name and Address of Applicant (Include ZIP Code) SOLARIS Group of Monsanto Company P. O. Box 5006, San Ramon, CA 94583-0906 <input type="checkbox"/> Check if this is a new address	6. Expedited Review. In accordance with FIFRA Section 3(c)(3) (b)(i), my product is similar or identical in composition and labeling to: EPA Reg. No. _____ Product Name _____	

Section - II

Amendment - Explain below. Final printed labels in response to Agency letter dated _____

Resubmission in response to Agency letter dated _____ "Me Too" Application

Notification - Explain below. Other - Explain below.

Explanation: Use additional page(s) if necessary. (For section I and Section II.)

Five copies of draft master label with revised text (previously accepted for BUG-GETA Snail & Slug Pellets, EPA Reg. No. 239-2651, on October 1 & 8) which includes addition of Bitrex logo/statement and dog hazard statements required by the Metaldehyde Reregistration Standard of December 1988. Also attached are five copies of finished labeling for the ABN: BUG-GETA PLUS Snail, Slug & Insect Killer. This is to certify that this notification meets every requirement of PR Notice 88-6.

Section - III

BEST AVAILABLE COPY

1. Material This Product Will Be Packaged In:

Child-Resistant Packaging <input type="checkbox"/> Yes* <input type="checkbox"/> No	Unit Packaging <input type="checkbox"/> Yes <input type="checkbox"/> No	Water Soluble Packaging <input type="checkbox"/> Yes <input type="checkbox"/> No	2. Type of Container <input type="checkbox"/> Metal <input type="checkbox"/> Plastic <input type="checkbox"/> Glass <input type="checkbox"/> Paper <input type="checkbox"/> Other (Specify) _____
* Certification must be submitted		If "Yes" Unit Packaging wgt. No. per container	If "Yes" Package wgt. No. per container

3. Location of Net Contents Information
 Label Container

4. Size(s) Retail Container _____

5. Location of Label Directions
 On Label
 On Labeling accompanying product

6. Manner in Which Label is Affixed to Product
 Lithograph Other
 Paper glued
 Stenciled

Section - IV

1. Contact Point (Complete items directly below for identification of individual to be contacted, if necessary, to process this application.)

Name F. X. Kamienski	Title Registration Specialist	Telephone No. (Include Area Code) (510) 355-3335
-------------------------	----------------------------------	---

Certification
I certify that the statements I have made on this form and all attachments thereto are true, accurate and complete. I acknowledge that any knowingly false or misleading statement may be punishable by fine or imprisonment or both under applicable law.

6. Date Application Received
(Stamped)

2. Signature <i>Francis X. Kamienski</i>	3. Title Registration Specialist
4. Typed Name Francis X. Kamienski	5. Date October 9, 1996

ORTHO®

NEW FORMULA

Bug-Geta® Plus

Snail, Slug & Insect Killer

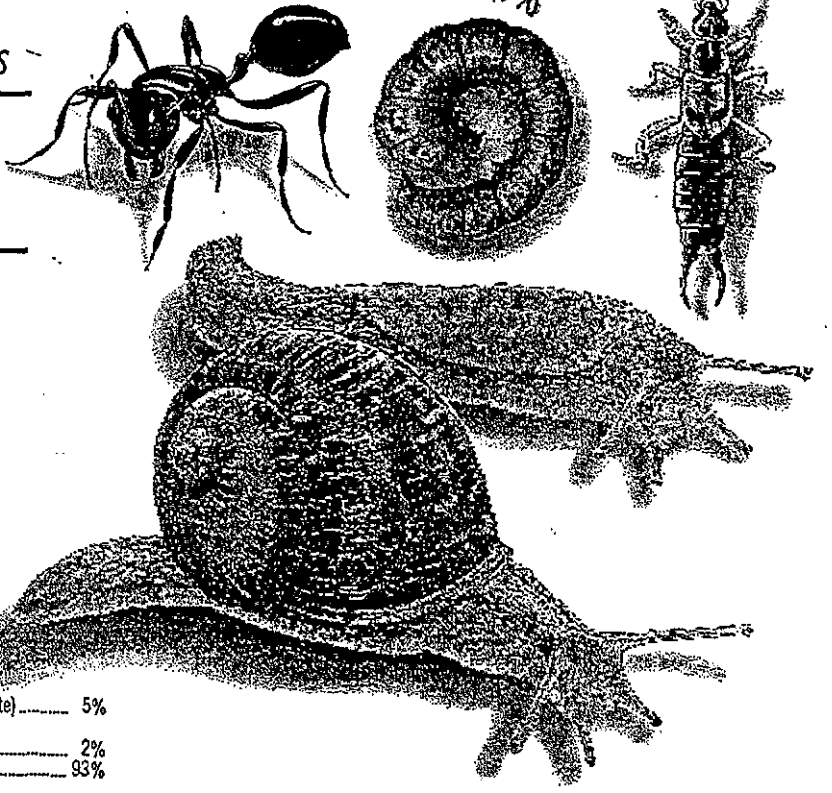

OUTDOOR
USE ONLY

Can Be
Used Around
Fruits & Vegetables

Remains Effective
After Rain or
Watering

Baits 4,000 sq ft

NOTIFICATION
OCT 24 1996



FOR HOME USE ONLY

Active Ingredients	
Carbaryl (1-Naphthyl N-methylcarbamate).....	5%
Metalddehyde (2,4,6,8-tetramethyl-1,3,5,7-tetraoxycyclo-octane).....	2%
Inert Ingredients.....	93%

KEEP OUT OF REACH OF CHILDREN

CAUTION See back panel for additional precautionary statements.

NET WT 2 LBS / 907 g

THIS PESTICIDE MAY BE FATAL TO DOGS OR OTHER PETS IF EATEN. KEEP PETS OUT OF TREATED AREA. FOR HOME USE ONLY.

ORTHO®

Bug-Geta® Plus Snail, Slug & Insect Killer

ORTHO®**Bug-Geta® Plus Snail, Slug & Insect Killer**

3 9 7

NOTE: THIS PACKAGE IS SOLD BY WEIGHT. CONTENTS MAY HAVE SETTLED DURING SHIPMENT.

DIRECTIONS FOR USE

It is a violation of Federal law to use this product in a manner inconsistent with its labeling.

READ ENTIRE LABEL. USE STRICTLY IN ACCORDANCE WITH LABEL PRECAUTIONARY STATEMENTS AND DIRECTIONS.

HOW TO USE: If ground is dry, water area to be treated thoroughly. While wearing protective gloves, scatter the product on the ground. **DO NOT PUT PRODUCT IN PILES.** Apply 1 lb of product to each 2,000 sq ft. Do not apply to foliage or other plant parts. Always sprinkle lightly with water after applications to moisten granules and make them more attractive to snails, slugs and the other listed pests. Withhold heavy watering for at least 2 days after treatment.

Prior to spring planting, bait areas to prevent damage to transplants or seedlings. Repeat treatment every two weeks or as needed. During periods of high rainfall or frequent irrigations, repeat treatments may be needed more frequently. Subsequent planting of food and feed crops in treated soil must be made with crops on this or other carbaryl labels.

CONTAINS Bitrex®

TO CONTROL SLUGS, SNAILS, CUTWORMS, ARMYWORMS, EARWIGS, SOYBUGS, CRICKETS, MILLIPEDES, PILLBUGS, ANTS, GRASSHOPPERS IN ORNAMENTAL GARDENS, PLANTED BORDERS, DICHONDRA, GRASS LAWNS, TURF & GROUND COVERS: Apply 1 lb per 2,000 sq ft by scattering directly from container or by using an ORTHO WHIRLYBIRD® Spreader at setting No. 4.

AROUND FRUITS & VEGETABLES: 1 lb treats 2,000 sq ft (40'x50') of garden area. Distribute granules around listed fruits and vegetables. Do not contaminate edible parts. May be used up to harvest.

VEGETABLES: Cucumbers, Melons, Squash, Peas, Beans, Carrots, Corn, Eggplant, Okra, Pepper, Potato, Tomato.

ROOT CROPS & HEADING VEGETABLES: Broccoli, Brussels Sprouts, Cabbage, Cauliflower, Lettuce (Head), Beets, Parsnip, Radish, Rutabaga, Turnip.

LEAFY VEGETABLES: Collards, Endive, Kale, Lettuce (Leaf), Parsley, Spinach, Swiss Chard, Turnip Tops.

FRUIT & NUT TREES: Almonds, Apples, Avocados, Cherries, Citrus, Pecans, Peaches, Plums, Walnuts, Nectarines.

SMALL FRUITS: Strawberries, Grapes, Berries (Blackberries, Blueberries, Boysenberries, Dewberries, Loganberries).

STORAGE AND DISPOSAL

STORAGE: Keep pesticide in original container. Do not put into food or drink containers. Avoid contamination of feed and foodstuffs. Store in a cool, dry place, preferably in a locked storage area.

DISPOSAL: PRODUCT - Partially filled carton may be disposed of by securely wrapping original container in several layers of newspaper and discard in trash.

CONTAINER - Do not reuse carton. Discard carton in trash.

PRECAUTIONARY STATEMENTS**HAZARDS TO HUMANS & DOMESTIC ANIMALS**

CAUTION: Causes eye irritation. May be harmful if swallowed. Avoid contact with eyes, skin or clothing. Avoid breathing dust. Wash thoroughly after handling. Keep out of reach of children and domestic animals.

IMPORTANT: KEEP GRANULES AWAY FROM CHILDREN, DOGS AND PETS. BAIT MAY BE ATTRACTIVE TO DOGS. CONFINE PETS DURING APPLICATION TO PREVENT THEM FROM BELIEVING THEY ARE BEING FED. USE AND STORE UNDER CONDITIONS WHERE THERE WILL NOT BE A HAZARD.

FIRST AID: In case of eye contact, wash eyes immediately with fresh water for at least 15 minutes. See a doctor if irritation persists. IF SWALLOWED - DO NOT make person vomit unless directed to do so by a doctor. Immediately take person and container to a doctor or an emergency hospital. If this is not possible, telephone for medical advice.

IF ON SKIN - Wash thoroughly with soap and water. IF INHALED - Remove person from exposure area. Note to Physicians: Emergency Information call 1-800-454-2333. Carbaryl is a moderate, reversible cholinesterase inhibitor. Atropine is antidotal.

ENVIRONMENTAL HAZARDS: This product is extremely toxic to aquatic and estuarine invertebrates and toxic to birds and other wildlife. Do not apply directly to water, to areas where surface water is present or to intertidal areas below the mean high water mark. Do not contaminate water when refueling of equipment washwaters. This pesticide may be fatal to dogs or other pets if eaten. Keep pets out of treated area.

NOTICE: Buyer assumes all responsibility for safety and use not in accordance with directions.



Medical Information call 1-800-454-2333
Product Information call 1-800-225-2883

ORTHO®, BUG-GETA®, WHIRLYBIRD®, SOLARIS® Trademarks of Monsanto Company
 SEVIN® is the Registered Trademark of Rhône-Poulenc for carbaryl insecticide
 Bitrex® is a registered trademark of MacFarlan Smith Ltd. Edinburgh Scotland

©Monsanto Company 1996

Manufactured for The SOLARIS Group of Monsanto Company
 P.O. Box 5008 San Ramon CA 94583-0808
 Form 8-115-01 / Product 5506
 EPA Reg. No. 239-2514

SOLARIS®

Made in USA



BEST AVAILABLE COPY

ORTHO® GET-A-BUG® Snail, Slug & Insect Killer

ABN: ORTHO® BUG-GETA® PLUS Snail, Slug & Insect Granules

[10/8/96]: ABN: BUG-GETA PLUS Snail, Slug & Insect Killer

1 LB. TREATS UP TO 2,000 SQ. FT. [1 lb. size only]

4 POUNDS TREATS UP TO 8,000 SQ. FT.

[10/9/96]: BAITTS 4,000 SQ FT (2 LB SIZE)

BAITTS 8,000 SQ FT (4 LB SIZE)

- Kills Snails & Slugs...PLUS Insects
- IN GRANULAR FORM - Can be used around Fruits & Vegetables
- Kills Ants, Crickets, Snails, Slugs, Cutworms, Grasshoppers, Armyworms, Earwigs, Sowbugs and Other Listed Insects
- Can be used around Fruits & Vegetables
- May Be Used Up To Harvest
- Small Granules
- Contains Metaldehyde & SEVIN® Carbaryl Insecticide
- Remains Effective After Rain or Watering

[10/9/96]: NEW FORMULA

[LOGO]: CONTAINS BITREX

[10/9/96]: THIS PESTICIDE MAY BE FATAL TO DOGS OR OTHER PETS IF EATEN. KEEP PETS OUT OF TREATED AREA. (Required by the Metaldehyde Reregistration Standard of December 1988).

Active Ingredients

Carbaryl (1-Naphthyl N-methylcarbamate) 5%

Metaldehyde (2,4,6,8-tetramethyl-1,3,5,7-tetraoxycyclo-octane) 2%

Inert Ingredients 93%

KEEP OUT OF REACH OF CHILDREN

CAUTION

See back panel for additional precautionary statements

For home use only

NET WT. 4 LBS / 1.81 kg,

2 LBS / 907 g [10/9/96]

NOTE: THIS PACKAGE IS SOLD BY WEIGHT. CONTENTS MAY HAVE SETTLED DURING SHIPMENT.

Now in granular form to control slugs, snails, cutworms, armyworms, earwigs, sowbugs, crickets, millipedes, pillbugs, ants, grasshoppers in ornamental gardens, planted borders, dichondra, grass lawns, turf and ground covers.

DIRECTIONS FOR USE

It is a violation of Federal law to use this product in a manner inconsistent with its labeling.

READ ENTIRE LABEL. USE STRICTLY IN ACCORDANCE WITH LABEL PRECAUTIONARY STATEMENTS AND DIRECTIONS.

HOW TO USE: If ground is dry, water area to be treated thoroughly. While wearing protective gloves, scatter the product on the ground. **DO NOT PUT PRODUCT IN PILES.** Apply 1 lb of product to each 2,000 sq ft. Do not apply to foliage or other plant parts. Always sprinkle lightly with water after applications to moisten granules and make them more attractive to snails, slugs and the other listed pests. Withhold heavy watering for at least 2 days after treatment.

Prior to spring planting, bait areas to prevent damage to transplants or seedlings. Repeat treatment every two weeks or as needed. During periods of high rainfall or frequent irrigations, repeat treatments may be needed more frequently. Subsequent planting of food and feed crops in treated soil must be made with crops on this or other carbaryl labels.

[10/9/96]: Contains Bitrex.

Apply 1 lb per 2,000 sq ft by scattering directly from container or by using an ORTHO WHIRLYBIRD® Spreader at setting No. 34. **[10/9/96]**

AROUND FRUITS AND VEGETABLES: 1 lb treats 2,000 sq ft (40'x 50') of garden area. Distribute granules around listed fruits and vegetables. Do not contaminate edible parts. May be used up to harvest.

VEGETABLES

Cucumbers, Melons, Squash, Peas, Beans, Carrots, Corn, Eggplant, Okra, Pepper, Potato, Tomato

ROOT CROPS AND HEADING VEGETABLES

Broccoli, Brussels Sprouts, Cabbage, Cauliflower, Lettuce (Head), Beets, Parsnip, Radish, Rutabaga, Turnip

LEAFY VEGETABLES

Collards, Endive, Kale, Lettuce (Leaf), Parsley, Spinach, Swiss Chard, Turnip Tops

239-2514.WP3
Form R 10375-1

EPA Accepted 4/30/93
Amendment of 3/25/96 & Notifications of 10/8/96 & 10/9 96

FRUIT AND NUT TREES

Almonds, Apples, [3/25/96]: ~~Avocados~~, Cherries, Citrus, Pecans, Peaches, Plums, Walnuts, nectarines

SMALL FRUITS

Strawberries, Grapes, Berries (Blackberries, Blueberries, Boysenberries Dewberries, Loganberries)

STORAGE AND DISPOSAL

STORAGE: Keep pesticide in original container. Do not put into food or drink containers. Avoid contamination of feed and foodstuffs. Store in a cool, dry place, preferably in a locked storage area.

DISPOSAL: PRODUCT-Partially filled carton may be disposed of by securely wrapping original container in several layers of newspaper and discard in trash.

CONTAINER-Do not reuse carton. Discard carton in trash.

PRECAUTIONARY STATEMENTS

HAZARDS TO HUMANS & DOMESTIC ANIMALS

CAUTION: Causes eye irritation. May be harmful if swallowed. Avoid contact with eyes, skin or clothing. Avoid breathing dust. Wash thoroughly after handling. Keep out of reach of children and domestic animals.

Child/ pet icon] IMPORTANT: KEEP GRANULES AWAY FROM CHILDREN, DOGS AND PETS. BAIT MAY BE ATTRACTIVE TO DOGS. CONFINE PETS DURING APPLICATION TO PREVENT THEM FROM BELIEVING THEY ARE BEING FED. USE AND STORE UNDER CONDITIONS WHERE THERE WILL NOT BE A HAZARD.

FIRST AID: In case of eye contact, wash eyes immediately with fresh water for at least 15 minutes. See a doctor if irritation persists. If swallowed, DO NOT make person vomit unless directed to do so by a doctor. Immediately take person and container to a doctor or an emergency hospital. If this is not possible, telephone for medical advice. If on skin, wash thoroughly with soap and water. If inhaled, remove person from exposure area. Note to Physicians: Emergency Information-call 1-800-454-2333. Carbaryl is a moderate, reversible cholinesterase inhibitor. Atropine is antidotal.

ENVIRONMENTAL HAZARDS: This product is extremely toxic to aquatic and estuarine invertebrates and toxic to birds and other wildlife. Do not apply directly to water, to areas where surface water is present or to intertidal areas below the mean high water mark. Do not contaminate water when disposing of equipment washwaters. This pesticide may be fatal to dogs or other pets if eaten. Keep pets out of treated area.

NOTICE: Buyer assumes all responsibility for safety and use not in accordance with directions.

Medical Information call 1-800-454-2333
Product Information call 1-800-225-2883

ORTHO, BUG-GETA®, WHIRLYBIRD® Trademarks of Monsanto Company
SEVIN® Trademark of Rhone-Poulenc for carbaryl insecticide.

©Monsanto Company 1994
Manufactured for
The SOLARIS Group of
Monsanto Company
P.O. Box 5008
San Ramon CA 94583-0808
Product 5506
Form RS802-A
EPA Reg. No. 239-2514
EPA Est. 66196-CA-1
Made in USA

