

PRECAUTIONARY STATEMENTS

HAZARDS TO HUMANS & DOMESTIC ANIMALS

WARNING: Causes eye irritation. Harmful if swallowed. Do not get in eyes. Avoid contact with skin or clothing. Avoid breathing vapor or spray mist. When handling this product, wear chemical-resistant gloves, long pants, and long-sleeved shirt. When outdoors, spray with the wind to your back and do not use when wind speeds are 10 mph or more. Wash the outside of the gloves with soap and water before removing. Do not allow children or pets to come into contact with treated surfaces until sprays have dried.

STATEMENT OF PRACTICAL TREATMENT: If swallowed, give water or milk to drink and induce vomiting by touching back of throat with finger or by administering syrup of ipecac. If possible, contact a physician, Poison Control Center, or emergency clinic before inducing vomiting. Do not induce vomiting or give anything by mouth to an unconscious person. If medical advice cannot be obtained, take person and product container to the nearest emergency treatment facility. In case of eye contact, flush eyes with fresh water for 15 minutes and get medical attention immediately. Wash skin and hands thoroughly after using. If inhaled, remove person from exposure area. Note to Physicians: Emergency Information - Call (415) 233-3337. This product contains a cholinesterase inhibitor. If signs and symptoms of cholinesterase inhibition are present, atropine is antidotal. 2-PAM may also be given in conjunction with atropine.

ENVIRONMENTAL HAZARDS: This pesticide is toxic to birds. Do not apply directly to water or wetlands. Do not contaminate water by cleaning of equipment or disposal of wastes. Cover or soil incorporate spills.

This product is highly toxic to bees exposed to direct treatment or residues on blooming crops or weeds. Do not apply this product or allow it to drift to blooming crops or weeds if bees are visiting treatment area. PHYSICAL OR CHEMICAL HAZARDS: Do not use or store near heat or open flame.

DIRECTIONS FOR USE

It is a violation of Federal law to use this product in a manner inconsistent with its labeling. READ ENTIRE LABEL USE STRICTLY IN ACCORDANCE WITH LABEL PRECAUTIONARY STATEMENTS AND DIRECTIONS.

[READY SPRAY™ Applicator only]

Spray when insects are present or feeding injury is first noticed. Repeat treatments as necessary. Do not apply to plants to be used for food or feed.

For homeowner use only: Mix thoroughly and spray entire plant covering both sides of foliage thoroughly. Mix to apply with an ORTHO SPRAYETTE, ORTHO Lawn & Garden Sprayer, tank type or drive sprayer. Spray when insects are present or feeding injury is first noticed. Repeat if reinfestation occurs. For homeowner use only. Do not apply to plants to be used for food or feed.

[READY SPRAY™ Applicator only]

HOW TO USE

Connect attached spray nozzle and siphon tube to garden hose. Remove seal from end of sprayer and hold down to front of sprayer. Remove nozzle and start tap from bottom. Allow hose to spray water. Turn ON/OFF valve on top of sprayer. Turn OFF sprayer when no water at tap.

Gently lift with thumb nail and rotate the small product control valve located near the nozzle forward to the open position.

To BEGIN spraying, point spraying nozzle toward plants and turn the valve to ON. Push the sprayer automatically makes the product in the spray stream. Spray upper and lower leaf surfaces thoroughly.

To STOP spraying, turn spray nozzle to OFF position and close the water at faucet. To relieve pressure on hose, turn the valve to OFF position and remove nozzle from hose, being careful to point nozzle away from you. Release the cap seal to store any product remaining. For storage, rotate small product control valve back to closed position.

FOR USE ON: Abutilon, Agaratum, Ager, Aluminum Plant, Alyssum, Arborvitae, Ardisia, Aster, Asparagus Fern, Aster, Azalea, Bald Cypress, Barberr, Begonia, Birch, Bird of Paradise, B. scholia, Bougainvillea, Boston Ivy, Boxwood, Calceola, Camellia, Canassa, Carnation, Catalpa, Cedar, Cherry Laurel, Chinese Elm, Chinese Holly, Chrysanthemum, Corkspear, Cosmos, Coloneaster, Crapemyrtle, Croton, Cuban Laurel, Ficus, Dahlia, Daisy, Dianthus, Barb, Dracaena, Eucalyptus, Fatsia, Aralia, Fir, Flowering Almond, Flowering Cherry, Flowering Plum, Fruitless Mulberry, Fuchsia, Gardenia, Geranium, Gladiolus, Hibiscus, Hackberry, Hawthorn, Hemlock, Hibiscus, Holly, Honey Locust, Honeysuckle, Ivy, Juniper, Lantana, Ligustrum, Lilac, Linden, Magnolia, Mahonia, Maple, Margold, Mimosa, Mock Orange, Nandina, Nephthytis, Oak, Oleander, Oriental, Ornamental Cabbage, Petunia, Poinsettia, Palm, Parthenocle, Petunia, Phlox, Poinsettia, Pine, Pittosporum, Podocarpus, Poinsettia, Poplar, Primrose, Purple Passion, Pyracantha, Rhododendron, Rose, Rose of Sharon, Salvia, Sassafras, Schottleria, Siberian Elm, Silver Maple, Slippery Elm, Soap dragon, Spirea, Spruce, Staghorn, Sumac, Sweet Gum, Sycamore, Tulip, Viburnum, Weeping Jew, Wild Cherry, Willow, Wisteria, Yucca, Yucca, Zinnia.

For Aphids: **Grasshoppers: Apply 2 Tbs. (1 fl. oz.) to 1 gal. water.

[READY SPRAY™ Applicator only]

For Insects Listed Below: Attached sprayer automatically mixes and applies 1 Tbs. (1/2 fl. oz.) to 1 gal. water to control Aphids, Armyworms, Bagworm, Black Vine Weevil, Budworms, Cabbage Looper, Casebearers, Catalpa Sphinx Moth, Cherry Laurel, Gypsy Moth, Cuban Laurel Thrips, Elm Leafbeetle, Fall Cankerworm, Fall Webworm, Flower Thrips, Gladiolus Thrips, Grasshoppers, Green Striped Mapleworm, Gypsy Moth, Lace Bug, Leafhoppers, Leafminers, Obliquebanded Leafrollers, Omnivorous Leafhopper, Maple Shoot Moth, Mealybugs, Mimosa Webworm, Nantucket Pine Tip Moth, Oak Webworm, Oleander Caterpillar, Orange striped Oakworm, Obscure Root Weevil (adults), Poplar Tentmaker, Psyllids, Rose Midge, Sawflies, Scale (crawlers), Spittlebug, Sunflower Moth, Tent Caterpillars, Willow Leafbeetle, White marked Tussock Moth, Whitelegged Yellow-necked Caterpillar.

Poplar Tentmaker, Psyllids, Rose Midge, Sawflies, Scale (crawlers), Spittlebug, Sunflower Moth, Tent Caterpillars, Willow Leafbeetle, White marked Tussock Moth, Whitelegged Yellow-necked Caterpillar.

* For these hard to control insects, spray 2 to 3 times 7 to 10 days apart.

For Insects Listed Below: Apply 3 Tbs. (1 1/2 fl. oz.) to 1 gal. water. Armyworms, Bagworm,

**Black Vine Weevil, Budworms, Cabbage Looper, Casebearers, Catalpa Sphinx Moth, Cherry Laurel, Cuban Laurel Thrips, Elm Leafbeetle, Fall Cankerworm, Fall Webworm, Flower Thrips, Gladiolus Thrips, Green Striped Mapleworm, Gypsy Moth, Hornworm, Lace Bug, Leafhoppers, Leafminers, Obliquebanded Leafrollers, Omnivorous Leafhopper, Maple Shoot Moth, Mealybugs, Mimosa Webworm, Nantucket Pine Tip Moth, Oak Webworm, Oleander Caterpillar, Orange striped Oakworm, Obscure Root Weevil (adults), Poplar Tentmaker, Psyllids, Rose Midge, Sawflies, Scale (crawlers), Spittlebug, Sunflower Moth, Tent Caterpillars, Two spotted Spider Mites, Suppression, Willow Leafbeetle, White marked Tussock Moth, Whiteflies, Yellow-necked Caterpillar.

* For these hard to control insects, spray 2 to 3 times 7 to 10 days apart.

**Species: Directions: Obscure Root Weevil (adults) - Apply full coverage spray to the foliage in late spring as soon as feeding is noticed (usually about April). Repeat every four weeks through September (mid July through August are the peak feeding times).

Black Vine Weevil - Apply full coverage spray to foliage and soil beneath plants. Begin applications in mid June and make 3 additional applications at 3 week intervals. Grasshoppers - Apply full coverage spray to foliage and sunburned plants and to lawn grasses.

For Japanese Beetle (Rose, Linden, Boston Ivy) - Apply 4 Tbs. (2 fl. oz.) to 1 gal. water. Repeat at 7 to 10 day intervals for as long as needed.

HONEYSUCKLE APHID ON HONEYSUCKLE - Spray thoroughly as leaves begin spring expansion. Reapply in 2 weeks with a third spray 4 weeks after second application.

COMBINATION SPRAY WITH FUNGICIDE OR FERTILIZER ON ROSES: ORTHENE Systemic Insect Control may be used together with ORTHO FUNGICIDE™, Rose Disease Control™, ORTHOCIDE Garden Fungicide or ORTHO Rose & Flower Food 8-12-4. Use quantities as recommended on each product label. Apply 1/2 cup of a regular schedule for disease control. Add ORTHENE Systemic Insect Control when necessary for insect control. Do not apply more than two consecutive applications of ORTHENE Systemic Insect Control in combination with any of the above fungicides.

[READY SPRAY™ Applicator only]

Lawn Insects - Fall Armyworm, Leafhoppers, Gird Webworms, Greenbug on Bermuda grass, Bluegrass, Bentgrass, Rescue, St. Augustine grass, Attached sprayer automatically applies product at the rate of 3 Tbs. (1 1/2 fl. oz.) to 1 gal. water. Apply at the rate of 6 gallons of spray (9 fl. oz.) per 1000 sq. ft. of lawn. Spray when insects are present or feeding damage is first noticed. Repeat treatments as needed.

Lawn Insects - Fall Armyworm, Leafhoppers, Gird Webworms, Greenbug on Bermuda grass, Bluegrass, Bentgrass, Rescue, St. Augustine, Apply at the rate of 3 Tbs. (1 1/2 fl. oz.) to 1 gal. water. Spray when insects are present or feeding damage is first noticed. Apply at the rate of 6 gallons of spray per 1000 sq. ft. of lawn. Repeat treatments as needed.

[READY SPRAY™ Applicator only]

Imported Fire Ant Mounds - Bermuda grass, Centipede grass, Bahia grass, St. Augustine grass and bare ground. Attach sprayer automatically applies product at the rate of 3 Tbs. (1 1/2 fl. oz.) to 1 gal. water. Apply 1/2 cup of spray to each ant mound. For best results, apply in cool weather or in early morning or late afternoon. Treat new mounds as they appear. Note: Reduce water pressure at faucet to spray from disturbing fire ant mounds when treating.

Imported Fire Ant - Bermuda grass, Centipede grass, Bahia, St. Augustine and bare ground. Mix 2 Tbs. (1 fl. oz.) in 1 gal. water in sprinkling can and apply to each fire ant mound. Thoroughly wet mound and treat a 4 foot diameter area around mound. For best results, apply in cool weather or in early morning or late afternoon. Treat new mounds as they appear.

***NOTE: Do not apply to American Elm, Flowering Crabapple, Sugar Maple, Red Maple, Cottonwood, Redbud and Weeping as foliage injury may occur. Clean sprayer after use by flushing with water. Do not use household bleach as a cleaning agent.

STORAGE AND DISPOSAL

STORAGE: Keep pesticide in original container. Do not put concentrate or dilute into food or drink containers. Avoid contamination of feed and feedstuffs. Store in a cool, dry place, preferably in a locked storage area. Do not store diluted spray.

DISPOSAL PRODUCT: Partially filled bottle may be disposed of by securely wrapping original container in several layers of newspaper and discard in trash. CONTAINER: Do not reuse empty bottle. Rinse thoroughly before discarding in trash.

NOTICE: Buyer assumes all responsibility for safety and use not in accordance with directions.

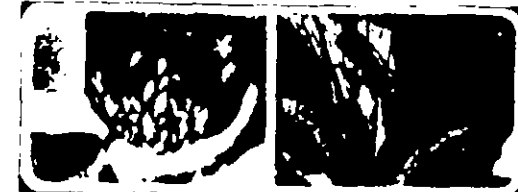


Chevron Chemical Company
Ortho Consumer Products Division
P.O. Box 5047, San Ramon, CA 94583-0947
R Form 10007 (1) Product 5446 Made in U.S.A.
EPA Reg. No. 279-2461 AA
EPA Est. 279-MO-1



ORTHO ORTHENE® Systemic Insect Control

CONTROLS: Aphids, Armyworms, Bagworm, Black Vine Weevil, Budworm, Cuban Laurel Thrips, Flower Thrips, Grasshoppers, Gypsy Moth, Imported Fire Ant, Leafhoppers, Leafminers, Leafrollers, Leafhoppers, Loopers, Mealybugs, Pine Tip Weevil, Rose Midge, Sawflies, Spittlebug, Scale (crawlers), Tent Caterpillars, and other listed leaf-eating caterpillars, worms, and lawn pests.
ON: Roses, Flowers, Ornamentals, Shrubs, Shade Trees and Lawns
[READY-SPRAY™ Applicator only] Ready-to-use concentrate mixes automatically through the attached hose and sprayer.



Active Ingredient
****Acephate (O,S)
acetylphosphor
amidohydroly
Inert Ingredients
****ORTHENE™, Az
U.S. Pat. Nos. 3,1

Keep out of reach of children
WARNING
See side panel for additional precautionary statements
NET CONTENTS 1 QT.

