

Do not apply to plants to be used for food or feed.

ORTHENE® Systemic Insect Control

PRECAUTIONARY STATEMENTS

HAZARDS TO HUMANS & DOMESTIC ANIMALS

WARNING: Causes eye irritation. Harmful if swallowed. Do not get in eyes. Avoid contact with skin or clothing. Avoid breathing vapor or spray mist.

STATEMENT OF PRACTICAL TREATMENT: If swallowed, give water or milk to drink and induce vomiting by touching back of throat with finger or by administering syrup of ipecac. If possible, contact a physician, Poison Control Center or emergency clinic before inducing vomiting. Do not induce vomiting or give anything by mouth to an unconscious person. If medical advice cannot be obtained, take person and product container to the nearest emergency treatment facility. In case of eye contact, flush eyes with fresh water for 15 minutes and get medical attention immediately. Wash skin and hands thoroughly after using. If inhaled, remove person from exposure area. **Note to Physicians:** Emergency information - call (415) 233-7377. This product contains a cholinesterase inhibitor. If signs and symptoms of cholinesterase inhibition are present, atropine is antidotal. 2-PAM may also be given in conjunction with atropine.

ENVIRONMENTAL HAZARDS: This pesticide is toxic to birds. Do not apply directly to water or wetlands. Do not contaminate water by cleaning of equipment or disposal of wastes. Cover or soil in corporate spills.

This product is highly toxic to bees exposed to direct treatment or residues on blooming crops or weeds. Do not apply this product or allow it to drift to blooming crops or weeds if bees are visiting treatment area. **PHYSICAL OR CHEMICAL HAZARDS:** Do not use or store near heat or open flame.

DIRECTIONS FOR USE

It is a violation of Federal law to use this product in a manner inconsistent with its labeling. **READ ENTIRE LABEL. USE STRICTLY IN ACCORDANCE WITH LABEL PRECAUTIONARY STATEMENTS AND DIRECTIONS.**

Mix thoroughly and spray entire plant covering both sides of foliage thoroughly. May be applied with an ORTHO SPRAYETTE, ORTHO Lawn & Garden Sprayer, tank type or power sprayer. Spray when insects are present or feeding injury is first noticed. Repeat if reinfestation occurs. **For homeowner use only.**

FOR USE ON: Abele, Ageratum, Alder, Aluminum Plant, Alyssum, Arborvitae, Ardisia, Ash, Asparagus fern, Aster, Azalea, Bald Cypress, Barberrry, Begonia, Birch, Bird of Paradise, Bischofia, Bouganvillea, Boston Ivy, Boxwood, Calendula, Camellia, Carissa, Carnation, Catalpa, Cedar, Cherry Laurel, Chinese Elm, Chinese Holly, Chrysanthemum, Cockspear, Thorn, Coleus, Cotonaster, Crapemyrtle, Croton, Cuban Laurel, Ficus, Dahlia, Daisy, Dieffenbachia, Dracaena, Eucalyptus, False Aralia, Fir, Flowering Almond, Flowering Cherry, Flowering Plum, Fruitless Mulberry, Fuchsia, Gardenia, Geranium, Gladiolus, Gloxinia, Hackberry, Hawthorn, Hemlock, Hibiscus, Holly, Honey Locust, Honeysuckle, Ivy, Juniper, Lantana, Ligustrum, Lilac, Linden, Magnolia, Mahonia, Maple, Marigold, Mimosa, Mock Orange, Nandina, Nephthytis, Oak, Oleander, Orchid, Ornamental Cabbage, Osmanthus, Palm, Parthenocia, Patunia, Philodendron, Photinia, Pine, Pittosporum, Podocarpus, Poinsettia, Poplar, Primrose, Purple Passion, Pyracantha, Rhododendron, Rose, Rose of Sharon, Salvia, Sassafras, Schefflera, Siberian Elm, Silver Maple, Slippery Elm, Snapdragon, Spirea, Spruce, Star Jasmine, Sumac, Sweet Gum, Sycamore, Tulip, Viburnum, Wintering Jew, Wild Cherry, Wisteria, Yucca, Yew, Yucca, Zinnia.

For Aphids: **Grasshoppers: Apply 2 Tbsp (1 1/2 fl oz) to 1 gal water.

For Insects Listed Below: Apply 3 Tbsp (1 1/2 fl oz) to 1 gal water. Armyworms, Bagworm, Black Vine Weevil, Budworms, Cabbage Looper, Casebearer, Catalpa Sphinx, Moth, Cherry Laurel Leafminer, Cuban Laurel Thrips, Elm Leafbeetle, Fall Cankerworm, Fall Webworm, Flower Thrips, Gladiolus Thrips, Green Striped Mapleworm, Gypsy Moth, Hornworm, Lace Bugs, Leafhoppers, Leafminers, Obliquebanded Leafroller, Omnivorous Leafminer, Maple Shoot Moth, Mealybugs, Mimosa Webworm, Nantucket Pine Tip Moth, Oak Webworm, Oleander Caterpillar, Orange striped Oakworm, Obscure Root Weevil (adults), Poplar Tentmaker, Psyllids, Rose Midge, Sawflies, Scales (crawlers),

Spittlebug, Sunflower Moth Tent Caterpillars, Two Spotted Spider Mites, (Suppression), Willow Leafbeetle, White marked Tussock Moth, Whiteflies, Yellow necked Caterpillar.

****For these hard to control insects:** spray 2-3 times 7-10 days apart.

****Special Directions:** **Obscure Root Weevil (adults):** Apply full coverage spray to the foliage in late spring as soon as feeding is noticed (usually about May). Repeat every four weeks through September (mid July through August are the peak feeding times). **Black Vine Weevil:** Apply full coverage spray to foliage and soil beneath plants. Begin applications in mid June and make 3 additional applications at 3 week intervals. **Grasshoppers:** Apply full coverage spray to foliage and soil beneath plants and to lawn grasses.

For Japanese Beetle (Rose, Linden, Boston Ivy): Apply 4 Tbsp (2 fl oz) to 1 gal water. Repeat at 7-10 day intervals for as long as needed.

THONESUCKLE APHID ON HONEYSUCKLE: Spray thoroughly as leaves begin spring expansion. Repeat in 2 weeks with a third spray 4 weeks after second application.

COMBINATION SPRAY WITH FUNGICIDE OR FERTILIZER ON ROSES: ORTHENE Systemic Insect Control may be used together with ORTHO FUNGINEX® Rose Disease Control or PHALTAN Rose & Garden Fungicide or ORTHOCIDE Garden Fungicide or ORTHO Rose & Flower Food 8-12-4 (Liquid) at the rates recommended on each product label. Apply fungicides on a regular schedule for disease control, add ORTHENE Systemic Insect Control only when necessary for insect control. Do not apply more than two consecutive applications of ORTHENE Systemic Insect Control in combination with any of the above fungicides.

Lawn Insects: (Fall) Armyworm, Leafhoppers, Sod Webworms, Greenbug on Bermuda grass, Bluegrass, Bentgrass, Fescue, St. Augustine. Apply 3 Tbsp (1 1/2 fl oz) to 1 gal water. Spray when insects are present or feeding damage is first noticed. Apply at the rate of 6 gallons of spray per 1000 sq. ft. of lawn. Repeat if reinfestation occurs.

Imported Fire Ant: Bermudagrass, Centipede, Bahia, St. Augustine and bare ground. Mix 2 Tbsp (1 fl oz) in 1 gal water in sprinkling can and apply to each fire ant mound. Thoroughly wet mound and treat a 4 foot diameter area around mound. For best results apply in cool weather or in early morning or late afternoon. Treat new mounds as they appear.

NOTE: Do not apply to American Elm, Flowering Crabapple, Sugar Maple, Red Maple, Cottonwood, Redbud and Weigelia as foliage injury may occur. Clean sprayer after use by flushing with water. Do not use household bleach as a cleaning agent.

STORAGE AND DISPOSAL

STORAGE: Keep pesticide in original container. Do not put concentrate or dilute into food or drink containers. Avoid contamination of feed and foodstuffs. Store in a cool, dry place preferably in a locked storage area. Do not store diluted spray.

DISPOSAL PRODUCT: Partial filled bottle may be disposed of by securely wrapping original container in several layers of newspaper and discard in trash. **CONTAINER:** Do not reuse empty bottle. Rinse thoroughly before discarding in trash.

NOTICE: Buyer assumes all responsibility for safety and use not in accordance with directions.

FUNGINEX® Reg. TM of CETA IERK GmbH Co. for Triforin Fungicide
U.S. Pat. No. 3,696,106

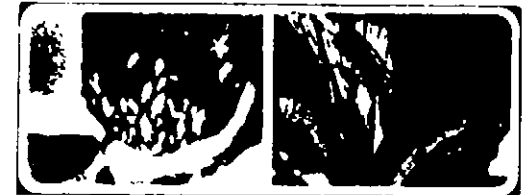
Chevron Chemical Com, any © 1984
Ortho Consumer Products Div. Inc.
San Francisco, CA 94120-7144
Form 10007-1, Product 5446, Made in U.S.A.
EPA Reg. No. 239-2461-AA
EPA Est. 278-MO-1



ORTHO ORTHENE Systemic Insect Control

CONTROLS: Aphids, Armyworms, Bagworm, Black Vine Weevil, Laurel Thrips, Flower Thrips, Grasshoppers, Gypsy Moth, Imported Leafhoppers, Leafminers, Leafrollers, Leafhoppers, Looper, Mealybug Weevil, Rose Midge, Sawflies, Spittlebug, Scale (crawlers), and other listed leaf-eating caterpillars, worms, and lawn pests.

ON: Roses, Flowers, Ornamentals, Shrubs, Shade Trees and Lawns.



Actual results may vary. © 1984

Keep out of reach of children
WARNING
See side panel for additional precautions.
NET CONTENTS 1 QT.

ACCEPTED
DEC 14 1987
Under the Federal Insecticide, Fungicide, and Rodenticide Act, as amended, for the pesticide registered under EPA Reg. No. 239-2461

BEET AVAILABLE COPY

