



Reg # 239-2426

PM-19



192

# ORTHO PEST-B-GON<sup>®</sup> Insect Bait

# ORTHO

# PEST-B-GON<sup>®</sup> Insect Bait

### PRECAUTIONARY STATEMENTS

#### HAZARDS TO HUMANS & DOMESTIC ANIMALS

**CAUTION:** May be harmful if swallowed or absorbed through the skin. Avoid contact with skin. Wash thoroughly after using. Do not use on food crops. Do not contaminate feed or foodstuffs. Do not apply to animals. Do not treat portions of buildings where pets can feed on bait. Do not put bait in piles. Do not broadcast on floors inside or in areas outside that are likely to be contacted by children or pets.

**STATEMENT OF PRACTICAL TREATMENT:** If swallowed, give a large amount of water and induce vomiting. See a doctor immediately. If on skin, wash skin thoroughly with soap and water. If in eyes, irrigate eyes for at least 15 minutes. If irritation or discomfort persists, see a doctor. **Note to Physicians:** Emergency Information: call (415) 233-3737. Atropine sulfate is antidotal.

**ENVIRONMENTAL HAZARDS:** This product is toxic to fish and wildlife. Birds feeding on treated areas may be killed. Keep out of lakes, streams or ponds. Do not contaminate water by cleaning of equipment or disposal of wastes.

#### DIRECTIONS FOR USE

It is a violation of Federal law to use this product in a manner inconsistent with its labeling.

**READ ENTIRE LABEL USE STRICTLY IN ACCORDANCE WITH LABEL PRECAUTIONARY STATEMENTS AND DIRECTIONS.**

#### DIRECTIONS

PEST-B-GON Insect Bait is a ready-to-use product that controls the listed pests that feed upon it or come in contact with it. It gives rapid kill of both resistant and nonresistant roaches.

#### WHEN TO USE

PEST-B-GON Insect Bait should be used anytime insect activity is noticed. Apply as directed below and repeat as necessary. Since most of the listed outdoor pests are night feeders, distribute bait in late afternoon or early morning.

#### HOW TO APPLY

**FOR USE OUTSIDE TO CONTROL: Earwigs, Sowbugs, Roaches, Crickets, Millipedes, Pillbugs, Centipedes**— Scatter bait lightly in a 2-4' band around house and porch foundations, under and around old boards, around plants, along edges of flower beds, walks, fences and other areas where pests congregate. Use approximately 4 ounces of bait per 1000 sq. ft. Repeat as necessary to control pests. **Do not apply directly to the foliage of ornamentals— apply bait to the soil around plants.** Do not water treated areas for at least 24 hours after application. **Do not use on food crops.**

**FOR USE IN HOMES, APARTMENT BUILDINGS, STORES, RESTAURANTS TO CONTROL: Earwigs, Roaches, Field Crickets**— Apply bait lightly to floors, under sinks and refrigerators and in other areas such as cracks and crevices where pests may hide but which are inaccessible to children. Use approximately 4 ounces of bait per 1000 sq. ft. of treated area. Scatter lightly so that bait is barely visible. Repeat as necessary.

#### STORAGE AND DISPOSAL

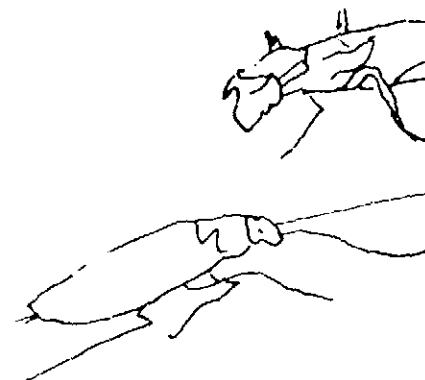
**STORAGE:** Keep pesticide in original container. Do not put into food or drink containers. Avoid contamination of feed and foodstuffs. Store in a cool, dry place, preferably in a locked storage area.

**DISPOSAL: PRODUCT**— Partially filled canister may be disposed of by securely wrapping original container in several layers of newspaper and discard in trash.

**CONTAINER**— Do not reuse canister. Discard canister in trash.

**NOTICE:** Buyer assumes all responsibility for safety and use not in accordance with directions.

Contains BAYGON<sup>®</sup> Insecticide  
FOR INDOOR AND OUTDOOR  
CONTROLS ROACHES, EARWIGS,  
SOWBUGS, PILLBUGS, CENTIPEDES,  
MILLIPEDES



Active Ingredient  
\*Propoxur (2-1) Methyl ethoxy phenyl methyl  
Inert Ingredients  
\*BAYGON<sup>®</sup> Reg. TM of the Parent Company  
GmbH, Leverkusen

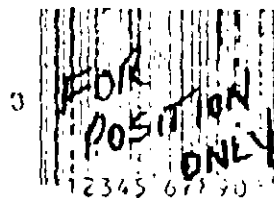
## BEST AVAILABLE COPY

**Chevron Chemical Company** 1364

Ortho Consumer Products Division  
San Francisco CA 94120 7144 Richmond CA 94894 0036  
Product 5289 Made in U.S.A.  
Form 8398 J  
EPA Reg. No. 239-2426

EPA Est. 239-NJ-1, 239-MQ-1

© 1992 Chevron Chemical Company



Keep out of reach of children  
**CAUTION**  
See back panel for additional precautionary statements

**NET WT. 1 LB.**

**ACCEPTED**  
MAY 14 1992  
Under the Federal Insecticide,  
Fungicide, and Rodenticide Act,  
as amended, for the pesticide  
registered under  
EPA Reg. No. 239-2426

272



# ORTHO

Ready-To-Use  
Granular Bait

## HO PEST-B-GON<sup>®</sup> Insect Bait

# PEST-B-GON<sup>®</sup> Insect Bait

### PRECAUTIONARY STATEMENTS HUMANS & DOMESTIC ANIMALS

Be harmful if swallowed or absorbed through the skin. Avoid contact thoroughly after using. Do not use on food crops. Do not contaminate. Do not apply to animals. Do not treat portions of buildings where pets. Do not put bait in pies. Do not broadcast on floors inside or in areas likely to be contacted by children or pets.

**PRACTICAL TREATMENT:** If swallowed give a large amount of water to drink. See a doctor immediately. If on skin, wash skin thoroughly with soap and water. Irrigate eyes for at least 15 minutes. If irritation or discomfort persists, consult a physician. **Note to Physicians:** Emergency Information - call (415) 233-3737 for antidote.

**ENVIRONMENTAL HAZARDS:** This product is toxic to fish and wildlife. Birds feeding on the ground may be killed. Keep out of lakes, streams or ponds. Do not contaminate water or soil. Proper disposal of wastes.

**USE:** Read and follow all directions on the label. Do not use in a manner inconsistent with its labeling. **DO NOT USE STRICTLY IN ACCORDANCE WITH LABEL PRECAUTIONARY STATEMENTS AND DIRECTIONS.**

Pest Bait is a ready-to-use product that controls the listed pests that come in contact with it. It gives rapid kill of both resistant and non-resistant pests.

Pest Bait should be used anytime insect activity is noticed. Apply as directed and repeat as necessary. Since most of the listed outdoor pests are night feeders, apply bait in late afternoon or early morning.

**HOW TO CONTROL:** Earwigs, Sowbugs, Roaches, Crickets, Millipedes, Field Crickets - Scatter bait lightly in a 2-4' band around house and porch foundation, around old boards, around plants, along edges of flower beds, walkways, and areas where pests congregate. Use approximately 4 ounces of bait per 1000 sq. ft. as necessary to control pests. **Do not apply directly to the foliage of plants.** Do not water treated areas for at least 24 hours. **Do not use on food crops.**

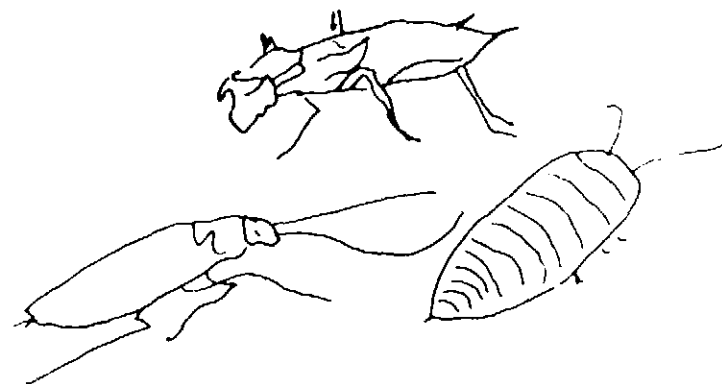
**RESIDENTIAL USE:** APARTMENT BUILDINGS, STORES, RESTAURANTS TO CONDOMINIUMS, Field Crickets - Apply bait lightly to floors under sinks and in other areas such as cracks and crevices where pests may hide but not accessible to children. Use approximately 4 ounces of bait per 1000 sq. ft. of floor area. Apply lightly so that bait is barely visible. Repeat as necessary.

**DISPOSAL:** Dispose of insecticide in original container. Do not put into food or drink containers or use for feed and foodstuffs. Store in a cool, dry place, preferably in a locked cabinet.

**PACKAGING:** Partially filled canister may be disposed of by securely wrapping in several layers of newspaper and discard in trash. Do not reuse canister. Discard canister in trash.

Ortho assumes all responsibility for safety and use not in accordance with label directions.

Contains BAYGON<sup>®</sup> Insecticide  
FOR INDOOR AND OUTDOOR USE  
CONTROLS ROACHES, EARWIGS, CRICKETS,  
SOWBUGS, PILLBUGS, CENTIPEDES,  
MILLIPEDES



## BEST AVAILABLE COPY

Active Ingredient	Propoxur (2-(4-Methoxyphenyl)methyl carbamate)	2.0%
Inert Ingredients	BAYGON <sup>®</sup> - Reg. TM of the Parent Company of Farbwerke Hoechst AG, Frankfurt, Germany	4.0%

Chemical Company - 1984  
Products Division  
4129-7144 Richmond, CA 94804-0036  
Made in U.S.A.



Keep out of reach of children  
**CAUTION**  
See back panel for additional precautionary statements  
**NET WT. 1 LB.**

