

**BEST AVAILABLE COPY**



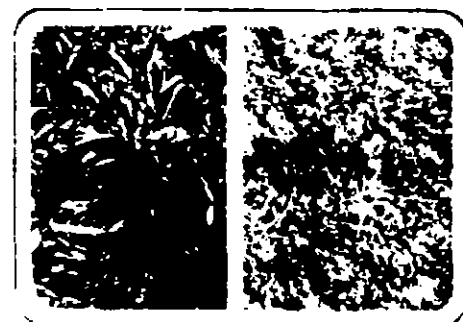
**ORTHO**

**TRIOX  
Vegetation  
Killer**

**TRIOX  
Vegetation  
Killer**

**USE ON**  
Patios  
Driveways  
Brick Walks  
Tennis Courts  
Parking Areas  
Use Where No Plant Growth  
is Desired  
Do Not Use on  
Flowers and  
Gardens  
  
Do Not Use on  
Lawns  
Vegetation  
Use on Driveways, Brick Walks, Paths, Patios, Parking  
Areas, along Fences, Curbs and Gutters around Buildings  
and under Gravelled Pathways where no plant  
growth is desired

**CONTAINS: Prometon**

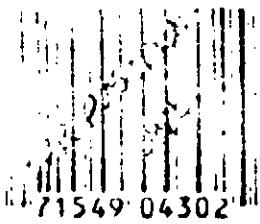


**KILLS WEEDS  
Prevents  
Plant  
Growth  
For Up To  
One Year**

Use on Driveways, Brick Walks, Paths, Patios, Parking  
Areas, along Fences, Curbs and Gutters around Buildings  
and under Gravelled Pathways where no plant  
growth is desired

Keep out of reach of children  
**WARNING**  
See back panel for additional precautionary statements

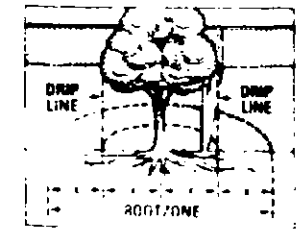
**NET CONTENTS 1 QT.**



**ORTHO**

**TRIOX  
Vegetation  
Killer**

Do not apply within twice the distance  
from the root zone of trees and shrubs  
planned.



Note



Do not use on areas shaded in red  
Do not use on lawns, lawns, through  
grass and through grass, through  
grass

**TRIOX<sup>®</sup> Vegetation Killer**

**HAZARDS TO HUMANS & DOMESTIC ANIMALS**

**WARNING:** ...  
**TREATMENT:** ...

**HAZARDS**  
**DIRECTIONS FOR USE**  
**READ ENTIRE LABEL USE STRICTLY IN ACCORDANCE WITH ALL PRECAUTIONARY STATEMENTS AND DIRECTIONS**

**DO NOT USE ON LAWNS OR HOUSE PLANTS**  
TRIOX Vegetation Killer is a semi-soluble liquid that kills existing vegetation and prevents plant growth for up to a year after treatment. It should be applied only to those areas where no plant growth is desired such as driveways, brick walks, gravelled pathways, patios, parking areas, along fences, curbs and gutters and under gravelled pathways. It does not cover the root system of desirable plants. See **IMPORTANT** ...  
**DIRECTIONS:** Make new ...

**DILUTION TABLE**

Amount TRIOX Vegetation Killer to Use	Water to Add	Area to Cover
1 Qt.	1 1/2 Gallons	1500 Sq. Ft.
2 Qts.	3 Gallons	3000 Sq. Ft.
3 Qts.	4 1/2 Gallons	4500 Sq. Ft.
1 Gallon	6 Gallons	6000 Sq. Ft.

**WHEN TO APPLY:** For best results, apply to bare ground of which growth is starting in the spring if weeds are taller than 4 to 6 inches they should be cut down and removed before application. A second application of TRIOX Vegetation Killer may be needed to control deep-rooted perennial weeds such as Wild Morningglory, Bermudagrass and Johnsongrass. In areas of heavy rainfall it may be necessary to repeat applications every 6 to 8 weeks.

**HOW TO APPLY:** Apply with a spray nozzle. If there is a heavy rain before treatment, refer to the Dilution Table for the amount of product to use. Spray thoroughly. For best results, apply TRIOX Vegetation Killer to the ground between the drip lines of trees. Three days after application, water the treated areas heavily to help the product penetrate. This will aid in killing and preventing regrowth. Do not spray on lawns, lawns, through grass and through grass, through grass.

**IMPORTANT:** Do not use on lawns, lawns, through grass and through grass, through grass. Do not apply over the root system of trees and shrubs, especially in the case of desirable ornamentals. Do not use on lawns, lawns, through grass and through grass, through grass.

**STORAGE AND DISPOSAL:** Keep out of reach of children. Do not use in plastic containers. Avoid contamination of food and feed. Do not use in plastic containers. Do not use in plastic containers. Do not use in plastic containers.

**NOTICE:** Buyer assumes all responsibility for use and disposal in accordance with all laws.  
**Chevron Chemical Company**  
Ortho Consumer Products  
San Francisco, CA 94120-7144  
EPA Reg. No. 247-1001  
EPA Est. No. 247-1001