



**ORTHO**

[239-1789] 142

**DIBROM  
Fly & Mosquito  
Spray**

Ready-To-Use  
No Mixing  
Controls  
Resistant and  
Nonresistant  
House Flies and  
Mosquitoes  
Gnats  
Fruit Flies  
Roaches  
(Water Bugs)  
All Species of Resistant  
and Nonresistant  
Cockroaches

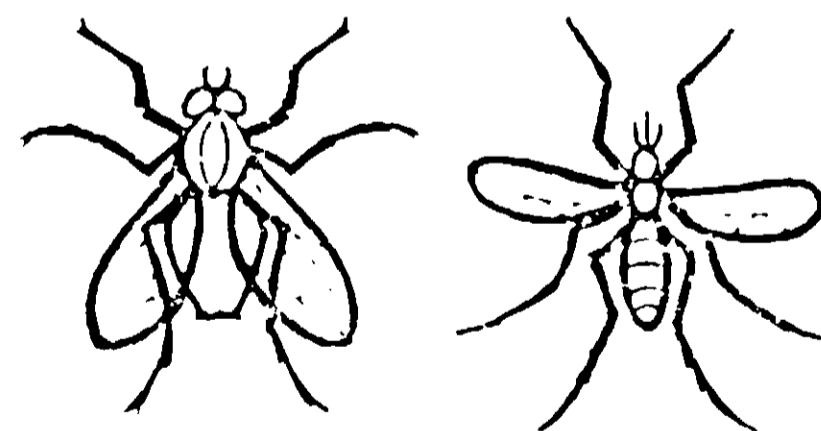
**ACCEPTED**  
MAY 22 1975  
Under the Federal Insecticide,  
Fungicide, and Rodenticide Act,  
this pesticide has been found to  
meet the requirements of the Act.  
EPA Reg. No. **239-1789**



**ORTHO**

**DIBROM  
Fly & Mosquito  
Spray**

CONTAINS 1% DIBROM  
FOR USE IN CONVENTIONAL AND  
FOGGING EQUIPMENT • IN DWELLINGS  
DAIRIES • CANNERIES • WINERIES  
LIVESTOCK BARNES



**CAUTION:** KEEP OUT OF REACH OF CHILDREN.  
See back panel for additional cautions.

**NET CONTENTS 1 GALLON LIQUID**



**ORTHO**

[239-1789]292

**DIBROM  
Fly & Mosquito  
Spray**

Ready-To-Use  
No Mixing  
Controls  
Resistant and  
Nonresistant  
House Flies and  
Mosquitoes  
Gnats  
Fruit Flies  
Roaches  
(Water Bugs)  
All Species of Resistant  
and Nonresistant  
Cockroaches

Chevron Chemical Company



**ORTHO**

**DIBROM  
Fly & Mosquito Spray**

FOR THE CONTROL OF HOUSE FLIES, MOSQUITOES, GNATS, FRUIT FLIES, ROACHES, (WATER BUGS), AND ALL SPECIES OF RESISTANT AND NONRESISTANT COCKROACHES.

Apply to areas where flies and mosquitoes are most likely to breed, such as garbage cans, trash receptacles, and areas around drains.

Apply to areas where flies and mosquitoes are most likely to breed, such as garbage cans, trash receptacles, and areas around drains.

Apply to areas where flies and mosquitoes are most likely to breed, such as garbage cans, trash receptacles, and areas around drains.

Apply to areas where flies and mosquitoes are most likely to breed, such as garbage cans, trash receptacles, and areas around drains.

Apply to areas where flies and mosquitoes are most likely to breed, such as garbage cans, trash receptacles, and areas around drains.

Apply to areas where flies and mosquitoes are most likely to breed, such as garbage cans, trash receptacles, and areas around drains.

Apply to areas where flies and mosquitoes are most likely to breed, such as garbage cans, trash receptacles, and areas around drains.

Apply to areas where flies and mosquitoes are most likely to breed, such as garbage cans, trash receptacles, and areas around drains.

Apply to areas where flies and mosquitoes are most likely to breed, such as garbage cans, trash receptacles, and areas around drains.

Apply to areas where flies and mosquitoes are most likely to breed, such as garbage cans, trash receptacles, and areas around drains.

Apply to areas where flies and mosquitoes are most likely to breed, such as garbage cans, trash receptacles, and areas around drains.

Apply to areas where flies and mosquitoes are most likely to breed, such as garbage cans, trash receptacles, and areas around drains.

Apply to areas where flies and mosquitoes are most likely to breed, such as garbage cans, trash receptacles, and areas around drains.

Apply to areas where flies and mosquitoes are most likely to breed, such as garbage cans, trash receptacles, and areas around drains.

Apply to areas where flies and mosquitoes are most likely to breed, such as garbage cans, trash receptacles, and areas around drains.

Apply to areas where flies and mosquitoes are most likely to breed, such as garbage cans, trash receptacles, and areas around drains.

Apply to areas where flies and mosquitoes are most likely to breed, such as garbage cans, trash receptacles, and areas around drains.

Apply to areas where flies and mosquitoes are most likely to breed, such as garbage cans, trash receptacles, and areas around drains.

Apply to areas where flies and mosquitoes are most likely to breed, such as garbage cans, trash receptacles, and areas around drains.