

239-1789

4-2-74

1 of 7

Registration Division

2 APR 1975

Chevron Chemical Co.-Ortho Division
940 Hensley Street
Richmond, California 94804

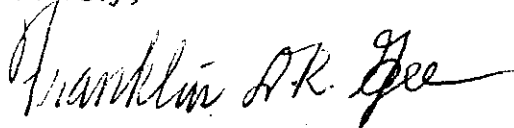
Gentlemen:

Subject: DIBRAM FLY & MOSQUITO SPRAY
EPA Reg. No. 239-1789
Letter of March 10, 1975

The labeling referred to above, submitted in connection with registration under the Federal Insecticide, Fungicide, and Rodenticide Act, is acceptable, and a stamped copy is enclosed for your records.

Submit five copies of the finished label when printing is completed.

Sincerely,



Franklin D. R. Gee
Product Manager (16)
Insecticide-Rodenticide Branch (WH-567)

Enclosure

2 of 7

PPPP

PPPP

COPY A

Do not use in milk processing rooms.

COPY B

Do not use in edible products areas of food processing plants, restaurants
or other areas where food is commercially prepared or processed. Do not
use in serving areas while food is exposed.

3 of 7

ACCEPTED
 APR 02 1974
 APR 02 1974

Under the Federal Insecticide, Fungicide, and Rodenticide Act, as amended, for the pesticide registered under EPA Reg. No. 239-1789



ORTHO



ORTHO DIBROM[®] Fly & Mosquito Spray

DIBROM[®] Fly & Mosquito Spray

**Ready-To-Use
 No Mixing
 Controls
 Resistant and
 Non-Resistant
 House Flies and
 Mosquitoes
 Gnats
 Fruit Flies
 Roaches
 (Water Bugs)
 All Species of Resistant
 and Non-Resistant
 Cockroaches**

Chevron Chemical Company
 Insect Division, San Francisco, CA 94119 Richmond, CA 94804
 Product 2347 Made in U.S.A.
 EPA Est. 239-MO-1
 EPA Reg. No. 239-1789-AA

READ ENTIRE LABEL. USE STRICTLY IN ACCORDANCE WITH LABEL CAUTIONS AND DIRECTIONS, AND WITH APPLICABLE FEDERAL AND STATE REGULATIONS.

KEEP PESTICIDE IN ORIGINAL CONTAINER. DO NOT PUT INTO FOOD OR DRINK CONTAINERS. STORE IN COOL, DRY PLACE.

USE DIRECTIONS
 ORTHO DIBROM Fly & Mosquito Spray is suitable for use in Flit Guns, Microsol Foggers, Heat Generating Foggers, Dairy Barn Foggers, Hydro Guns or suitable automatic atomizing application equipment.

USE UNDILUTED - Apply as a finely atomized space spray using applicator adjusted to produce particle sizes not smaller than 30 microns.

GENERAL USE - In and Around Dwellings, Open Air Theaters, Restaurants, Drive-ins, also in and around Dairy Barns, Livestock Barns, Pig Pens, Poultry Houses, Feed Lots, Cattle Pens, Horse Stables, Garbage Dumps, Outside Meat Packing Establishments (including Federally Inspected) for Control of Resistant and Non-Resistant House Flies, Lesser House Flies, Mosquitoes, Gnats: Direct spray throughout the fly infested areas, spraying around and above animals but not directly at animals. Repeat as necessary. Do not use in milk processing rooms. Do not use fog applications in dwellings and restaurants. ← B

DAIRY BARN FOGGERS - Resistant and Non-Resistant House Flies, Lesser House Flies, Mosquitoes, Gnats: Use approximately 1 oz. of ORTHO DIBROM Fly & Mosquito Spray to 3000 cubic feet of space. Close all doors and windows where possible before fogging. Cows may be in barn during fogging operations. Apply around and above animals but not directly at animals. ← A

POULTRY PROCESSING AND PACKING PLANTS: Around Outside and in Inedible Product Areas Inside Buildings - Direct spray throughout the fly infested areas. Repeat as necessary. Exposed food products and packaging materials must be removed from the room or protected. After using this material, equipment and utensils must be thoroughly rinsed with potable water before operations are resumed.

WINERIES, CANNERIES, CIDER MILLS, FOOD PROCESSING PLANTS, LOADING DOCKS, CULL PILES, REFUSE AREAS: Drosophila (Fruit Fly) - Spray as necessary contacting walls, floors, doorways, windows, refuse piles and cull piles except those for stock feed. Avoid contamination of feeds, foodstuffs and food processing machinery. Do not apply in the edible products areas of food processing plants. ← C

ROACHES (Water Bugs) - Spot Application Only: for Control of All Species of Resistant and Non-Resistant Cockroaches, Including German, Brown-Banded, Oriental and American Roaches In and Around Dwellings, Dairies, Barns and Other Buildings Where Roaches Exist - Apply as a coarse spray to areas infested by roaches to contact insects as much as possible. Treat daily or as necessary, applying to cracks, crevices, hiding places and adjacent exposed surfaces where insects may be contacted. Do not apply in the edible products areas of food processing plants. ← C

CAUTION: Do not get on skin, eyes or clothing. Harmful if swallowed. Avoid breathing spray mist. Concentrate may cause skin damage. Use waterproof gloves when handling concentrate. In case of contact, immediately remove contaminated clothing and flush skin or eyes with plenty of water, for eyes, get medical attention.

Note to Physicians: Emergency Information - call (415) 233-3737. Avoid contamination of feed, foodstuffs and drinking water. Do not use in edible products areas of food processing plants, restaurants or other areas where food is commercially prepared or processed. Do not use in serving areas while food is exposed. DO NOT USE, POUR, SPILL OR STORE NEAR HEAT OR OPEN FLAME. Avoid wetting the hides of animals. May corrode metal spray equipment. Flush sprayers out occasionally with kerosene to prevent possible corrosion. When container is empty, immediately wash thoroughly and destroy. Never re-use.

This product is toxic to fish, birds and other wildlife. Keep out of lakes, streams or ponds. Do not apply where runoff is likely to occur. Do not apply when weather conditions favor drift from areas treated. Do not contaminate water by cleaning of equipment or disposal of wastes. Apply this product only as specified on this label.

This product is highly toxic to bees exposed to direct treatment or residues on crops. Protective information may be obtained from your Cooperative Agricultural Extension Service.

CONDITIONS OF SALE: 1. Chevron Chemical Company (Chevron) warrants that this material conforms to the chemical description on the label and is reasonably fit for use as directed hereon. Chevron neither makes, nor authorizes any agent or representative to make, any other warranty of FITNESS or of MERCHANTABILITY, guarantee or representation, express or implied, concerning this material.

2. Critical and unforeseeable factors beyond Chevron's control prevent it from eliminating all risks in connection with the use of chemicals. Such risks include, but are not limited to, damage from application, lack of complete control, and damage caused by drift. Such risks occur even though the product is reasonably fit for the uses stated hereon, and even though label directions are followed. Buyer and user acknowledge and assume all risks and liability (except those assumed by Chevron under 1 above) resulting from handling, storage, and use of this material.



ORTHO



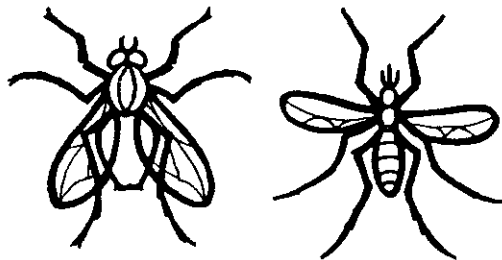
ORTHO

DIBROM[®] Fly & Mosquito Spray

DIBROM[®] Fly & Mosquito Spray

Ready-To-Use
 No Mixing
 Controls
 Resistant and
 Non-Resistant
 House Flies and
 Mosquitoes
 Gnats
 Fruit Flies
 Roaches
 (Water Bugs)
 All Species of Resistant
 and Non-Resistant
 Cockroaches

CONTAINS 1% DIBROM[®]
 FOR USE IN CONVENTIONAL AND
 FOGGING EQUIPMENT • IN DWELLINGS
 DAIRIES • CANNERIES • WINERIES
 LIVESTOCK BARNs



Active Ingredients	By Wt.
* Naled	1%
Petroleum Distillates	96%
Inert Ingredients	3%
* 1,2-dibromo-2,2-dichloroethyl dimethyl phosphate	
U.S. Pat. No. 2,971,882	

CAUTION: Keep out of reach of children.
 See back panel for additional cautions.

NET CONTENTS 1 GALLON LIQUID



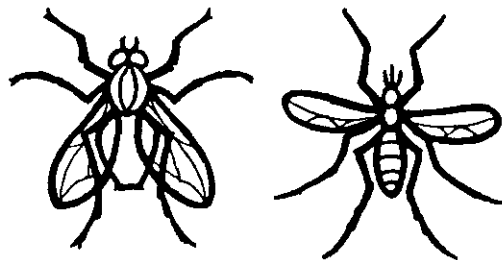
ORTHO

DIBROM[®] Fly & Mosquito Spray

DIBROM[®] Fly & Mosquito Spray

Ready-To-Use
 No Mixing
 Controls
 Resistant and
 Non-Resistant
 House Flies and
 Mosquitoes
 Gnats
 Fruit Flies
 Roaches
 (Water Bugs)
 All Species of Resistant
 and Non-Resistant
 Cockroaches

CONTAINS 1% DIBROM[®]
 FOR USE IN CONVENTIONAL AND
 FOGGING EQUIPMENT • IN DWELLINGS
 DAIRIES • CANNERIES • WINERIES
 LIVESTOCK BARN



Active Ingredients	By Wt.
*Naled	1%
Petroleum Distillates	96%
Inert Ingredients	3%
*1,2-dibromo-2,2-dichloroethyl dimethyl phosphate	
U.S. Pat. No. 2,971,882	

CAUTION: Keep out of reach of children.
 See back panel for additional cautions.

NET CONTENTS 1 GALLON LIQUID

6097

ACCEPTED

APR 02 1974

Under the Federal Insecticide, Fungicide, and Rodenticide Act, as amended, the product is registered under EPA Reg. No. 239-1789



ORTHO



ORTHO

DIBROM[®] Fly & Mosquito Spray

DIBROM[®] Fly & Mosquito Spray

Ready-To-Use
No Mixing
Controls
Resistant and
Non-Resistant
House Flies and
Mosquitoes
Gnats
Fruit Flies
Roaches
(Water Bugs)
All Species of Resistant
and Non-Resistant
Cockroaches

Chevron Chemical Company

San Francisco, CA 94119 Richmond, CA 94804

Product 3347 Made in U.S.A.

Form 66111

EPA Est. 239-MO-1

EPA Reg. No. 239-1789-AA

READ ENTIRE LABEL. USE STRICTLY IN ACCORDANCE WITH LABEL CAUTIONS AND DIRECTIONS, AND WITH APPLICABLE FEDERAL AND STATE REGULATIONS.

KEEP PESTICIDE IN ORIGINAL CONTAINER. DO NOT PUT INTO FOOD OR DRINK CONTAINERS.

STORE IN COOL, DRY PLACE

USE DIRECTIONS

ORTHO DIBROM Fly & Mosquito Spray is suitable for use in Mist Guns, Microsols Foggers, Heat Generating Foggers, Dairy Barn Foggers, Hydro Guns or suitable automatic atomizing application equipment

USE UNDILUTED - Apply as a finely atomized space spray, using applicator adjusted to produce particle sizes not smaller than 30 microns

GENERAL USE - In and Around Dwellings, Open Air Theaters, Restaurants, Drive-ins, also in and around Dairy Barns, Livestock Barns, Pig Pens, Poultry Houses, Feed Lots, Cattle Pens, Horse Stables, Garbage Dumps, Outside Meat Packing Establishments (including Federally Inspected) for Control of Resistant and Non-Resistant House Flies, Lesser House Flies, Mosquitoes, Gnats: Direct spray throughout the fly infested areas, spraying around and above animals but not directly at animals. Repeat as necessary. Do not use in milk processing rooms. Do not use fog applications in dwellings and restaurants.

DAIRY BARN FOGGERS - Resistant and Non-Resistant House Flies, Lesser House Flies, Mosquitoes, Gnats: Use approximately 1 oz. of ORTHO DIBROM Fly & Mosquito Spray to 3000 cubic feet of space. Close all doors and windows where possible before fogging. Cows may be in barn during fogging operations. Apply around and above animals but not directly at animals.

POULTRY PROCESSING AND PACKING PLANTS: Around Outside and in Inedible Product Areas Inside Buildings - Direct spray throughout the fly infested areas. Repeat as necessary. Exposed food products and packaging materials must be removed from the room or protected. After using this material, equipment and utensils must be thoroughly rinsed with potable water before operations are resumed.

WINERIES, CANNERIES, CIDER MILLS, FOOD PROCESSING PLANTS, LOADING DOCKS, CULL PILES, REFUSE AREAS: Drosophila (Fruit Fly) - Spray as necessary contacting walls, floors, doorways, windows, refuse piles and cull piles except those for stock feed. Avoid contamination of feeds, foodstuffs and food processing machinery. Do not apply in the edible products areas of food processing plants.

ROACHES (Water Bugs) - Spot Application Only: for Control of All Species of Resistant and Non-Resistant Cock roaches, Including German, Brown-Banded, Oriental and American Roaches In and Around Dwellings, Dairies, Barns and Other Buildings Where Roaches Exist - Apply as a coarse spray to areas infested by roaches to contact insects as much as possible. Treat daily or as necessary, applying to cracks, crevices, hiding places and adjacent exposed surfaces where insects may be contacted. Do not apply in the edible products areas of food processing plants.

CAUTION: Do not get on skin, eyes or clothing. Harmful if swallowed. Avoid breathing spray mist. Concentrate may cause skin damage. Use waterproof gloves when handling concentrate. In case of contact, immediately remove contaminated clothing and flush skin or eyes with plenty of water. For eyes, get medical attention.

Note to Physicians: Emergency Information - call (415) 233 3737. Avoid contamination of feed, foodstuffs and drinking water. Do not use in edible products areas of food processing plants, restaurants or other areas where food is commercially prepared or processed. Do not use in serving areas while food is exposed. DO NOT USE, POUR, SPILL OR STORE NEAR HEAT OR OPEN FLAME. Avoid wetting the hides of animals. May corrode metal spray equipment. Flush sprayers out occasionally with kerosene to prevent possible corrosion. When container is empty, immediately wash thoroughly and destroy. Never re-use.

This product is toxic to fish, birds and other wildlife. Keep out of lakes, streams or ponds. Do not apply where runoff is likely to occur. Do not apply when weather conditions favor drift from areas treated. Do not contaminate water by cleaning of equipment or disposal of wastes. Apply this product only as specified on this label.

This product is highly toxic to bees exposed to direct treatment or residues on crops. Protective information may be obtained from your Cooperative Agricultural Extension Service.

CONDITIONS OF SALE: 1. Chevron Chemical Company (Chevron) warrants that this material conforms to the chemical description on the label and is reasonably fit for use as directed hereon. CHEVRON neither makes, nor authorizes any agent or representative to make, any other warranty of FITNESS or of MERCHANTABILITY, guarantee or representation, express or implied, concerning this material.

2. Critical and unforeseeable factors beyond Chevron's control prevent it from eliminating all risks in connection with the use of chemicals. Such risks include, but are not limited to: damage from application, lack of complete control, and damage caused by drift. Such risks occur even though the product is reasonably fit for the uses stated hereon, and even though label directions are followed. Buyer and user acknowledge and assume all risks and liability (except those assumed by Chevron under 1 above) resulting from handling, storage, and use of this material.

A-4

7 of 7

0000000000

0000000000

COPY A

Do not use in milk processing rooms.

COPY B

Do not use in edible products areas of food processing plants, restaurants
or other areas where food is commercially prepared or processed. Do not
use in serving areas while food is exposed.

1

✓