

239-1789

1-28-72

1 of 3

COPY A

Do not apply in the edible products areas of food processing plants.

COPY B

Concentrate may cause skin damage. Use water proof gloves when handling concentrate.

COPY C

Do not use fog applications in dwellings and restaurants.

COPY D

Spot Application Only:

COPY E

This product is highly toxic to bees exposed to direct treatment or residues on crops. Protective information may be obtained from your Cooperative Agricultural Extension Service.

ACCEPTED
 JAN 28 1972
 UNDER THE FEDERAL INSECTICIDE
 FUNGICIDE AND RODENTICIDE ACT
 FOR ECONOMIC POISON REGISTERED
 UNDER NO. 239-1789 SUBJECT
 TO ATTACHED COMMENTS.

4100
 2010



ORTHO

DIBROM[®] Fly & Mosquito Spray



ORTHO

READ ENTIRE LABEL. USE STRICTLY IN ACCORDANCE WITH LABEL CAUTIONS, WARNINGS AND DIRECTIONS, AND WITH APPLICABLE FEDERAL AND STATE REGULATIONS. KEEP PESTICIDE IN ORIGINAL CONTAINER. DO NOT PUT INTO FOOD OR DRINK CONTAINERS.

STORE IN COOL, DRY PLACE

ORTHO DIBROM Fly & Mosquito Spray is suitable for use in Flit Guns, Microsol Foggers, Heat Generating Foggers, Dairy Barn Foggers, Hydro-Guns or suitable automatic atomizing application equipment.

USE UNDILUTED—Apply as a finely atomized space spray using applicator adjusted to produce particle sizes not smaller than 30 microns.

GENERAL USE—In and Around Dwellings, Open Air Theaters, Restaurants, Drive-ins, also in and around Dairy Barns, Livestock Barns, Pig Pens, Poultry Houses, Feed Lots, Cattle Pens, Horse Stables, Garbage Dumps, Outside Meat Packing Establishments (including Federally inspected) for Control of Resistant and Non-Resistant Houseflies, Lesser Houseflies, Mosquitoes, Gnats: Direct spray throughout the fly infested areas, spraying around and above animals but not directly at animals. Repeat as necessary. Do not use in milk processing rooms. ← C

DAIRY BARN FOGGERS — Resistant and Non-Resistant Houseflies, Lesser Houseflies, Mosquitoes, Gnats: Use approximately 1 ounce of ORTHO DIBROM Fly & Mosquito Spray to 3000 cubic feet of space. Close all doors and windows where possible before fogging. Cows may be in barn during fogging operations. Apply around and above animals but not directly at animals.

POULTRY PROCESSING AND PACKING PLANTS: Around Outside and in Inedible Product Areas Inside Buildings — Direct spray throughout the fly infested areas. Repeat as necessary. Exposed food products and packaging materials must be removed from the room or protected. After using this material, equipment and utensils must be thoroughly rinsed with potable water before operations are resumed.

WINERIES, CANNERIES, CIDER MILLS, FOOD PROCESSING PLANTS, LOADING DOCKS, CULL PILES, REFUSE AREAS: Drosophila (Fruit Fly) — Spray as necessary contacting walls, floors, doorways, windows, refuse piles and cull piles except those for stock feed. Avoid contamination of feeds, foodstuffs and food processing machinery. ← A

ROACHES (Water Bugs) — For Control of All Species of Resistant and Non-Resistant Cockroaches, Including German, Brown-Banded, Oriental and American Roaches In and Around Dwellings, Dairies, Barns and Other Buildings Where Roaches Exist — Apply as a coarse spray to areas infested by roaches to contact insects as much as possible. Treat daily or as necessary, applying to cracks, crevices, hiding places and adjacent exposed surfaces where insects may be contacted. ← A B

CAUTION: Do not get on skin, eyes or clothing. Harmful if swallowed. Avoid breathing spray mist. In case of contact, immediately remove contaminated clothing and flush skin or eyes with plenty of water; for eyes, get medical attention. Avoid contamination of feed, foodstuffs and drinking water. DO NOT USE, POUR, SPILL OR STORE NEAR HEAT OR OPEN FLAME. Avoid wetting the hides of animals. May corrode metal spray equipment. Flush sprayers out occasionally with kerosene to prevent possible corrosion. When container is empty, immediately wash thoroughly and destroy. Never re-use.

CONDITIONS OF SALE: 1. Chevron Chemical Company (Chevron) warrants that this material conforms to the chemical description on the label and is reasonably fit for use as directed hereon. Chevron neither makes, nor authorizes any agent or representative to make, any other warranty of FITNESS or of MERCHANTABILITY, guarantee or representation, express or implied, concerning this material.

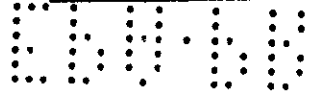
2. Critical and unforeseeable factors beyond Chevron's control prevent it from eliminating all risks in connection with the use of chemicals. Such risks include, but are not limited to, damage from application, lack of complete control, and damage caused by drift. Such risks occur even though the product is reasonably fit for the uses stated hereon and even though label directions are followed. Buyer and user acknowledge and assume all risks and liability (except those assumed by Chevron under 1 above) resulting from handling, storage, and use of this material.

DIBROM[®] Fly & Mosquito Spray

**Ready To Use
No Mixing
Controls
Resistant and
Non-Resistant
Houseflies and
Mosquitoes
Gnats
Fruit Flies
Roaches
(Water Bugs)
All Species of Resistant
and Non-Resistant
Cockroaches**

Chevron Chemical Company
 Lima Division / San Francisco, California 94120
 P.O. Box 310, Oakland, California, Calif.
 Des Moines, Iowa, Oklahoma, N.J.,
 Houston, Texas, Orlando, Fla.
 Form 6611 Product 4347
 EPA Reg. No. 239 1789 Made in U.S.A.

PERTH AMEY



Side Panel

Front Panel



ORTHO



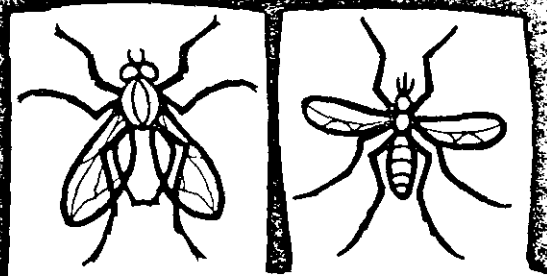
ORTHO

DIBROM[®] Fly & Mosquito Spray

DIBROM[®] Fly & Mosquito Spray

Ready To Use
 No Mixing
 Controls
 Resistant and
 Non-Resistant
 Houseflies and
 Mosquitoes
 Gnats
 Fruit Flies
 Roaches
 (Water Bugs)
 All Species of Resistant
 and Non-Resistant
 Cockroaches

CONTAINS 1% DIBROM[®] MALED. INSECTICIDE
 FOR USE IN CONVENTIONAL AND
 FOGGING EQUIPMENT IN DWELLINGS
 DAIRIES CANNERIES WINERIES
 LIVESTOCK BARN



Active Ingredients	By Wt.
*Maled.	1%
Petroleum Distillates	96%
Inert Ingredients	3%
*1,2-dibromo-2,2-dichloroethyl dimethyl phosphate	
U.S. Pat. No. 2,971,882	

CAUTION: Keep out of reach of children
 See back panel for additional cautions

NET CONTENTS 1 GALLON LIQUID