

239-1736

3-19-1970

1/4

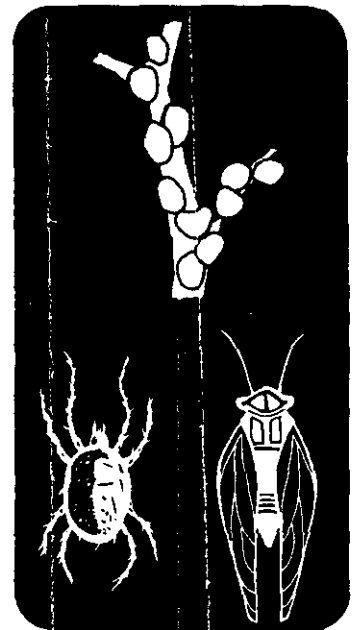


# VOLCK<sup>®</sup> SUPREME spray

*[insecticide-miticide]*

*a superior oil spray—  
for western agriculture*

Active Ingredient	By Wt.
Petroleum Oil	98%
Inert Ingredients	2%
Petroleum Oil Min. Unsulfonated Residue—92%	
Petroleum Oil Classification—Unclassified.	



**CAUTION:** KEEP OUT OF REACH OF CHILDREN. SEE SIDE PANEL FOR ADDITIONAL CAUTIONS.

## NET CONTENTS 5 GALLONS LIQUID

READ ENTIRE LABEL. USE STRICTLY IN ACCORDANCE WITH CAUTIONS, WARNINGS AND DIRECTIONS, AND WITH APPLICABLE STATE AND FEDERAL REGULATIONS. KEEP PESTICIDE IN ORIGINAL CONTAINER. DO NOT PUT CONCENTRATE OR DILUTE INTO FOOD OR DRINK CONTAINERS.

**VOLCK Supreme Spray** is an especially refined Phytonomic Oil Contact Insecticide. It is for use on plants in foliage or the dormant stage.

AMOUNTS GIVEN ARE FOR 100 GALLONS OF DILUTED SPRAY.

**ALFALFA (Seed Crops Only):** Use 1 quart per acre in 20 to 30 gallons of water by ground application or 10 to 15 gallons by air when used in combination and at the recommended label rates with either ORTHO Malathion 5 Emulsive, ORTHO Phosphamidon 8 Spray, or ORTHO Toxaphene 8 Emulsive for control of the pests listed on the product labels. **Spider Mites:** Use 1 quart per acre at the dilutions noted above with Kelthane EC at the recommended label rates.

**ALMONDS, APRICOTS, CHERRIES, NECTARINES, PEACHES, PLUMS, PRUNES—**  
Dormant or Delayed Dormant: Brown Apricot Scale, Black Scale, San Jose Scale, Olive Scale (Parlatoria Scale), Oleander Scale, Frosted Scale, Italian Pear Scale, European Fruit Lecanium, Putnam Scale, Parlatoria, Soft Brown Scale, Certain Other Scale Insects, Eggs of Aphids, Red Spider Mites—1½ to 2 gals. Summer Use—Red Spider Mites—3 to 4 qts.; Summer Stages of Brown Apricot Scale, San Jose Scale—1 gal.

**APPLES: Rust Mite—Delayed Dormant—1½ to 2 gals. Summer Use—1 to 1½ gals.**

**APPLES, PEARS: Dormant or Delayed Dormant:** San Jose Scale, Italian Pear Scale, Eggs of Aphids, Red Spider Mites—1½ to 2 gals. Summer Use: Red Spider Mites—3 to 4 qts. (Concentrate Sprayers—Pears (Calif. only)—4 to 6 gals. in 90 to 120 gals. of water per acre). Summer Forms of San Jose and Italian Pear Scale—1 to 1½ gals.

**FIGS: Fig Scale—Dormant or Delayed Dormant—Use 3 gals. VOLCK Supreme Spray or 2½ gals. VOLCK Supreme Spray plus ½ pint ORTHO Ethion 4 Emulsive. Severe Infestation—Use 2½ gals. VOLCK Supreme Spray plus ½ pint ORTHOPHOS 4 Emulsive.**

**GRAPES: Mealybug—Dormant: 1 gal. plus 1 qt. ORTHOPHOS 4 Emulsive. Use 250 to 400 gals. spray per acre, depending upon size of vines.**

**LEMONS, GRAPEFRUIT: Red Scale, Yellow Scale, Purple Scale, Black Scale, Red Spider Mites—1 to 1¼ gals. VOLCK Supreme Spray plus 1 lb. ORTHO Malathion 25 Wettable. For best results, spray during winter and spring months when Red Scale are more easily controlled and trees generally less reactive to oil sprays. Do not use within 8 weeks of harvest on Lemons.**

**OLIVES: Parlatoria Scale, Spider Mites, Oleander Scale, Black Scale—Use 1½ gals. VOLCK Supreme Spray or combine 1 gal. VOLCK Supreme Spray with ½ pint ORTHOPHOS 4 Emulsive per 100 gals. water. Apply in the pre-bloom or in post-bloom up to buckshot.**

**NAVEL ORANGES: Red Scale, Black Scale, Yellow Scale, Purple Scale, Red Spider Mites—3 qts. VOLCK Supreme Spray plus 1 lb. ORTHO Malathion 25 Wettable. Do not use on Navel Oranges after Sept. 1.**

**VALENCIA ORANGES: Red Scale, Black Scale, Yellow Scale, Purple Scale, Red Spider Mites—1 gal. applying not later than Sept. 1; or 3 qts. VOLCK Supreme Spray plus 1 pound ORTHO Malathion 25 Wettable, applied not later than Sept. 15.**

**PEARS: Pear Psylla—Delayed Dormant: 2 gals. Summer Use: 1 to 1½ gals. Blister Mite—Delayed Dormant and Fall Spray—2 gals.**

**ORNAMENTALS and SHADE TREES (Conifers (See Note), Holly, Pyracantha, Sycamores, Hawthorne, Flowering Peach, Flowering Cherry, Apple, Magnolia, Maple,**

Dogwood, Oak, Privet, Birch]: Soft Brown Scale, Oyster Shell Scale, Brown Apricot Scale, Black Scale, San Jose Scale, Red Spider Mites and Eggs—1 gal. to 100 gals. water. Dormant Spray on Deciduous Varieties—2 gals. per 100 gals. water. Dormant Spray on Other Varieties—1 gal. per 100 gals. water. NOTE: May cause discoloration of blue spruce. Do not use on conifers or ferns not tolerant to oil sprays.

**WALNUTS:** Late Spring to Mid-Summer Only: Summer Stages of Frosted Scale, European Fruit Scale, San Jose and other Soft-Shell Scale, Red Spider Mites—2 to 4 quarts. The addition of one of the following phosphate insecticides aids in scale control: ORTHO TRITHION 25 Wettable, ORTHOPHOS 4 Emulsive, ORTHO Ethion 25 Wettable, or ORTHO Parathion 25 Wettable. See label for recommended dosages. Do not apply after husk split.

**MIXING DIRECTIONS:** With agitator running start filling spray tank with water. When combining with Wettable Powder insecticide or fungicide products, add these first when tank is 1/2 filled. Add VOLCK Supreme Spray when tank is about 1/2 full and while there is sufficient agitation of the spray to insure complete emulsification.

**CAUTION:** Harmful if swallowed. For foliage applications, the spray tank must be free of any sulfur residue before using VOLCK Supreme Spray. Do not combine Sulfur sprays with VOLCK Supreme on foliage and do not follow a previous application of Sulfur or apply Sulfur following VOLCK Supreme until sufficient time has elapsed for safety (at least 30 days). If in doubt, spray a portion of one tree previously treated with Sulfur, using 1 quart to 25 gallons water. If sufficient time has not elapsed, burn will show in several days. Do not use VOLCK Supreme Spray when temperatures are above 90° Fahrenheit. When temperatures drop below 32° F. (usually night-time lows), do not spray tree and vine crops until daytime temperatures have warmed to a point above 35° F. and are free from moisture due to melting frost or heavy dews. Do not use on foliage closer than 60 days after or 90 days before using ORTHOCIDE (Captan) or PHALTAN products. Do not use in combination with SEVIN on crops other than citrus. Application to trees weakened by disease, drought, drying winds, or high nitrogen applications may result in oil injury.

When this product is combined with ORTHOPHOS or Malathion, it is toxic to fish. Keep out of any body of water.

**CONDITIONS OF SALE:** 1. Chevron Chemical Company (Chevron) warrants that this material conforms to the chemical description on the label and is reasonably fit for use as directed hereon. Chevron neither makes, nor authorizes any agent or representative to make, any other warranty of FITNESS or of MERCHANTABILITY, guarantee or representation, express or implied, concerning this material.

2. Critical and unforeseeable factors beyond Chevron's control prevent it from eliminating all risks in connection with the use of chemicals. Such risks include, but are not limited to, damage to plants and crops to which the material is applied, lack of complete control, and damage caused by drift to other plants or crops. Such risks occur even though the product is reasonably fit for the uses stated hereon and even though label directions are followed. Buyer and user acknowledge and assume all risks and liability (except those assumed by Chevron under 1 above) resulting from handling, storage, and use of this material.



## CHEVRON CHEMICAL COMPANY

ORTHO DIVISION — San Francisco, Calif. 94120

RICHMOND, CALIFORNIA    PORTLAND, OREGON    FRESNO, CALIFORNIA    CHERRY HILL, NEW JERSEY  
DALLAS, TEXAS    HONOLULU, HAWAII    ORLANDO, FLORIDA    DES MOINES, IOWA  
Form 7755-A    USDA Reg. No. 239-1736    Product No. 2675    Made in U.S.A.

4/4

ACCEPTED  
MAR 19 1970  
UNDER THE FEDERAL INSECTICIDE  
FUNGICIDE AND RODENTICIDE ACT  
FOR ECONOMIC POISON REGISTERED  
ED UNDER NO. 239-1736