



United States Environmental Protection Agency Washington, DC 20460

Registration Amendment Other

OPP Identifier Number 251591

Application for Pesticide - Section I

1. Company/Product Number: 239-739
2. EPA Product Manager: William Jacobs
3. Proposed Classification: None
4. Company/Product Name: ORTHO MALATHION 50 Insect Spray
5. Name and Address of Applicant: The SOLARIS Group of Monsanto, P. O. Box 5006, San Ramon, CA 94583-0906
6. Expedited Review: In accordance with FIFRA Section 3(c)(3)(b)(i), my product is similar or identical in composition and labeling to: EPA Reg. No. Product Name

Section - II

Amendment - Explain below. Resubmission in response to Agency letter dated. Notification - Explain below. Final printed labels in response to Agency letter dated AUG 22 1997. "Me Too" Application. Other - Explain below.

Explanation: Use additional page(s) if necessary. (For section I and Section II.) NOTIFICATION: Revise & reformat label text into tabular form; delete chemical name of malathion as per 6-3.1.A. of the Agency's Label Review Manual; "restore" 3 day harvest intervals for apples, cherries and grapes which were approved by the Agency on 1/4/96 and inadvertently removed on 1/22/96; and provide clearer and expanded instructions for reapplication in the Outdoor Home Use Only section. Added text is double underlined; deleted text is stricken out. This Notification is consistent with the provisions of PRN 95-2. Attached are five copies of a master label and a draft final printed label for ABN: ORTHO Malathion 50 PLIIS Insect Spray

Section - III

1. Material This Product Will Be Packaged In: Child-Resistant Packaging, Unit Packaging, Water Soluble Packaging, 2. Type of Container: Metal, Plastic, Glass, Paper, Other (Specify)
3. Location of Net Contents Information: Label, Container
4. Size(s) Retail Container
5. Location of Label Directions: On Label, On Labeling accompanying product
6. Manner in Which Label is Affixed to Product: Lithograph, Paper glued, Stenciled, Other

Section - IV

1. Contact Point: Name: Frank Kamienski, Title: Registration Specialist, Telephone No.: 510/355-3335
Certification: I certify that the statements I have made on this form and all attachments thereto are true, accurate and completed. I acknowledge that any knowingly false or misleading statement may be punishable by fine or imprisonment or both under applicable law.
2. Signature: Frank Kamienski
3. Title: Registration Specialist
4. Typed Name: Frank Kamienski
5. Date: June 4, 1997
6. Date Applied: (Stamp)

7/18

ORTHO® MALATHION 50 Insect Spray, EPA Reg. No. 239-739
[ABN] ORTHO® MALATHION 50 PLUS® Insect Spray

BONUS

25% MORE

40 FL OZ AT REGULAR 32 FL OZ PRICE

Makes up to an extra 24 gal of spray *{con}*OUTDOOR USE ONLY

[5/31/96]: Concentrate

Makes Up To 96 Gallons Diluted Spray [Quart Size]

Contains Wetting Agent for Added Value

Kills Insects-Aphids, Whitefly, Mealybugs, Mosquitoes, Red Spider Mite and Scales

On: Ornamentals, [6/4/97] Roses, Flowers, Shrubs, Trees, Fruits, Citrus, & Vegetables

[6/4/97] Plus Kills Mosquitoes Outdoors

Superior Formula Plus [6/4/97] With ORTHEX® Wetting Agent

NEW / NOW Measuring Cap & Pour Spout

Improved Package

New / Now with Measuring Cap

Easy Pour Spout

Fast & Easy Measuring Cap

NOTIFICATION

AUG 22 1997

Active Ingredient

Malathion [6/4/97] :-0,0 dimethyl phosphorodithioate of diethyl mercaptosuccinate..... 50%

*Inert Ingredients.....50%

*Contains Petroleum Distillate

KEEP OUT OF REACH OF CHILDREN

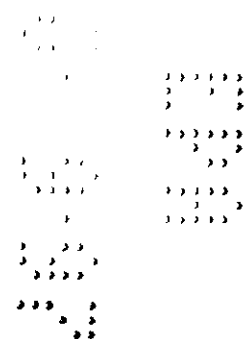
WARNING

See back panel booklet for additional precautionary statements.

NET CONTENTS 1QT / 946 ml

1PT / 473 ml

40 FL OZ (1 QT 8 FL OZ) 1.18 L



3/18

[6/4/97]

**Open Resealable Label for
Directions & Precautions**

PEEL HERE
PRESS TO RESEAL

Alternative Sales Copy 1:

Kills insects - Aphids, Cabbage Looper, Codling Moth, Cucumber Beetles, Mealybugs, Red Spider Mite, Scales, Tent Caterpillar, Thrips, Whiteflies. See complete list inside. Contains ORTHEX®, a special additive for better insect control. ORTHEX makes your spray spread more evenly and stick better to cover insects on smooth, rough or waxy plant surfaces. Improved package with pour spout and measuring cap for fast, easy, accurate measuring. This product is specially formulated for residential use only.

DO NOT USE INSIDE THE HOME. DO NOT USE ON ANIMALS.

~~Peel open for use directions and further information.~~

Alternative Sales Copy 2:

<p>ON ROSES, FLOWERS, SHRUBS, TREES, VEGETABLES & FRUITS (INCLUDING CITRUS)</p> <p>Kills ☐Aphids ☐Boxelder Bugs ☐Cabbage Loopers ☐Codling Moths ☐Cucumber Beetles ☐Hemlock Woolly Adelgids ☐Mealybugs ☐Red Spider Mites ☐Scales ☐Tent Caterpillars ☐Thrips ☐Whiteflies ☐Many Other Foliage Pests</p> <p>Also combine with Volck® Oil Spray to remove sooty mold & help destroy insect eggs.</p>
<p>AROUND HOUSE FOUNDATION</p> <p>Kills ☐Outdoor Mosquitoes ☐Other Pests</p>

DO NOT USE INSIDE THE HOME. DO NOT USE ON ANIMALS.

This product is specially formulated for residential use only. It contains ORTHEX® so spray spreads more evenly and sticks better to plants.

11
4/18

Redundant & Repeated Text

~~WARNING: Causes substantial but temporary eye injury. Harmful if swallowed or absorbed through skin. Do not get in eyes. SEE ADDITIONAL PRECAUTIONARY STATEMENTS AND DIRECTIONS INSIDE BOOKLET.~~

~~PULL HERE TO OPEN LABEL PRESS TO RESEAL.~~

~~(Medical Information call 1-800-454-2333
Product Information call 1-800-225-2883)~~

~~Manufactured for
The SOLARIS Group of
Monsanto Company
P.O. Box 5008
San Ramon CA 94583-0808
Form 7-812-01 Product 1992
EPA Reg. No. 239-739
EPA Est. 239-1A-3¹, 58996-MO-1^A
Superscript is first letter of lot number
Made in USA~~

17/18

DIRECTIONS FOR USE: It is a violation of Federal law to use this product in a manner inconsistent with its labeling.

READ ENTIRE LABEL. USE STRICTLY IN ACCORDANCE WITH LABEL PRECAUTIONARY STATEMENTS AND DIRECTIONS.

Measuring Cap: The cap has 4 measuring lines indicated inside. Fill cap to appropriate line for fast, easy, accurate measuring. Close cap tightly after use - no need to rinse.

[6/4/97 Optional mixing directions for measuring cap presented in brackets]

- Line 1 = 1 teaspoon (tsp)
- Line 2 = 1 Tablespoon (Tbs) = 3 tsp = 1/2 fl oz
- Line 3 = 1 fl oz(2 Tbs)
- Line 4 = 2 fl oz (4 Tbs)

tsp = teaspoon

Tbs = Tablespoon

[6/4/97] 3 teaspoons (tsp) = 1 Tablespoon (Tbs) = 1/2 fl oz

May be applied with a hose-end sprayer [6/4/97] such as Ortho Dial'n Spray® or tank-type sprayer.

DIAL 'n SPRAY HOSE-END SPRAYER INSTRUCTIONS

To apply with an Ortho Dial 'n Spray Hose-End Sprayer: pour product into sprayer jar. Do not add water. Dial setting to Use: always set dial to the rate to mix into each gallon of spray. see directions below for rate to use each specific pest.

[6/4/97] DIRECTIONS: FOR OUTDOOR HOME USE ONLY:

Spray thoroughly covering both upper and lower leaf surfaces or other infested plant parts. Repeat as necessary. [6/4/97] Wait at least 7 days between applications. Can be used from 1 to 14 days of harvest on vegetables. See specific vegetable below for correct number of days. Make new dilution for each use.

6/18

Ornamentals including Roses, Camellias, Azaleas, Stocks, Chrysanthemums & Evergreens

(Do not use on Boston, Maidenhair and Pteris ferns, Canaerti Juniper and/or some species of Crassula -example: Jade Plant).

Amount to Use

Aphids: **2 tsp per gal of water** [Fill cap to line 1 two times. Add to 1 gal of water.]

Bagworms, Boxelder Bugs, Fourlined Leaf Bugs, Hemlock Woolly Adelgids, Japanese Beetles, Lacebugs, Leafhoppers (Rose), Mealybugs, Red Spider Mites, Spruce Mites, Tarnished Plant Bugs, Thrips, Whiteflies & Woolly Aphids: **1 Tbs (½ fl oz) per gal of water** [Fill cap to line 2. Add to 1 gal of water.]

Scales (Black, Oyster Shell & Soft Brown): **2 Tbs per gal of water** [Fill cap to level 2 two times [or] / fill cap to line 3. Add to 1 gal of water.]

Combination Spray with Fungicide on Roses

ORTHO RosePride® Funginex® Rose & Shrub Disease Control may be mixed with this product when listed insect(s) and disease(s) are found on roses. Follow directions and precautions on both labels.

~~ORNAMENTALS (Roses, Camellias, Azaleas, Stocks, Chrysanthemums, Evergreens) Aphids: 2 tsp to 1 gal water. Fill cap to line 1 two times. Add to 1 gal of water. Red Spider Mite, Spruce Mite, Mealybugs, Lacebugs, Woolly Aphid, Hemlock Woolly Adelgid, Whiteflies, Thrips, Tarnished Plant Bug, Fourlined Leaf Bug, Bagworms, Rose Leafhopper, Japanese Beetle Adults, Box Elder Bug: 1 Tbs (1/2 oz) per gal water. Fill cap to line 2. Add to 1 gal of water. Scales (Black Scale, Soft Brown Scale, Oyster Shell Scale): 2 Tbs per gal water. Fill cap to level 2 two times [or] / fill cap to line 3. Add to 1 gal of water. Do not use on Boston, Maidenhair and Pteris ferns, Canaerti Juniper and some species of Crassula (example: Jade Plant). Combination Spray with Fungicide on Roses ORTHO FUNGINEX® Rose Disease Control may be mixed with this product when listed insect(s) and disease(s) are found on roses. Follow directions and precautions on both labels.~~

7/18

Apples, Apricots, Cherries, Grapes, Peaches, Pears & Strawberries

Malathion may cause injury to McIntosh and Cortland Apples; to Bosc Pears; and Ribier Grapes.

Amount to Use

Aphids: **2 tsp per gal of water** [Fill cap to line 1 two times. Add to 1 gal of water.]

Bud Moths, Codling Moths, Fourlined Leaf Bugs, Japanese Beetles, Leafhoppers (Grape), Leafrollers (Red-Banded, Fruit Tree, & Strawberry), Mealybugs, Pear Psyllids, Plum Curculios, Red Spider Mites, Spittlebugs, Tarnished Plant Bugs, Tent Caterpillars, Thrips, Whiteflies & Woolly Aphids: **1 Tbs per gal of water** [Fill cap to line 2. Add to 1 gal of water.]

Scale Crawlers: **2 Tbs per gal of water** [Fill cap to line 2 two times [or] / fill cap to line 3. Add to 1 gal of water.]

When to Harvest	
Pears	Do not apply within 1 day of harvest.
Apples, Cherries, Grapes & Strawberries	<u>Do not apply within 3 days of harvest.</u>
Apricots & Peaches	Do not apply within 7 days of harvest.

~~FRUITS (Apples, Pears, Grapes, Apricots, Cherries, Peaches, Strawberries) Aphids: 2 tsp to 1 gal water. Fill cap to line 1 two times. Add to 1 gal of water. Codling Moth, Tent Caterpillar, Red-Banded Leafroller, Plum Curculio, Bud Moth, Fruit Tree Leafroller, Strawberry Leafroller, Spittlebug, Red Spider Mite, Mealybugs, Woolly Aphid, Whiteflies, Thrips, Tarnished Plant Bug, Fourlined Leaf Bug, Grape Leafhopper, Pear Psyllid, Japanese Beetle Adults: 1 Tbs (1/2 oz) per gal water. Scale Crawlers: 2 Tbs per gal water. Fill cap to line 2 two times [or] / fill cap to line 3. Add to 1 gal of water. Malathion may cause injury to McIntosh and Cortland varieties of apples, to Bosc pears and Ribier grapes. Do not apply to Pears within 1 day of harvest or to Apricots and Peaches within 7 days of harvest.~~

8/18

Mangoes and Citrus (Oranges, Tangerines, Grapefruits, Lemons & Limes)

Do not apply during full bloom.

Amount to Use

Aphids, Scales (Black, Purple, Yellow & Florida Red), Thrips & Whiteflies: 2 tsp per gal of water [Fill cap to line 1 two times. Add to 1 gal of water.]

Combination With Volck® Oil Spray on Citrus, Avocados, Mangoes, Gardenias & Ixora

Do not apply during full bloom.

Amount to Use

Aphids, Mealybugs, Red Spider Mites, Scales, Thrips & Whiteflies
Also removes Sooty Mold Fungus through control of Whitefly Larvae, and helps destroy insect eggs (such as Codling Moth, Oak Moth & Red Spider Mite eggs):
1 Tbs of each product per gal of water

When to Harvest	
Mangoes	Do not apply within 2 days of harvest.
Avocados & Citrus	Do not apply within 7 days of harvest.

~~CITRUS (Oranges, Tangerines, Grapefruit, Lemons, Limes) AND MANGO Aphids, Whiteflies, Black Scale, Purple Scale, Yellow Scale, Florida Red Scale, Thrips: 2 tsp per gal water. Fill cap to line 1 two times. Add to 1 gal of water. Thorough coverage of branches and upper and lower leaf surfaces is necessary to control insects. Do not apply during full bloom. Do not apply within 7 days of harvest.~~

~~COMBINATION WITH VOLCK Oil Spray on Citrus, Avocados, Mangoes, Gardenias and Ixora for control of Scale Insects, Red Spider Mites, Mealybugs, Whiteflies, Aphids, Thrips and for the removal of Sooty Mold Fungus through control of Whitefly Larvae: Use 1 Tablespoonful Volck Oil Spray and 1 Tablespoonful ORTHO Malathion 50 Insect Spray for each gallon of diluted spray. May be applied on Avocados up to within 7 days of harvest; to Grapefruit, Lemons, Limes and Oranges up to within 7 days of harvest but not during full bloom, and to Mangoes up to within 2 days of harvest. Ovicide: Helps to destroy insect eggs such as Red Spider Mite eggs, Oak Moth eggs and Codling Moth eggs.~~

9/18

Vegetables & Melons

Amount to Use

Aphids: **2 tsp per gal of water** [Fill cap to line 1 two times. Add to 1 gal of water.]

Beetles (Bean Leaf, Blister, Japanese & Mexican Bean), Cabbage Loopers, Harlequin Bugs, Imported Cabbageworms, Leafminers, Leafhoppers, Leafrollers (Strawberry), Lygus Bugs, Onion Maggots (Flies), Onion Thrips, Pickleworms, Red Spider Mites, Root Weevils (Strawberry), Thrips & Whiteflies: **1 Tbs per gal of water** [Fill cap to line 2. Add to 1 gal of water.]

Cucumber Beetles & Squash Vine Borers: **4 tsp per gal of water** [Fill cap to line 1 four times. Add to 1 gal of water.]

When to Harvest	
Potatoes	May be applied up to day of harvest.
Beans, Cantaloupe*, Cucumbers*, Melons*, Okra, Squash* & Tomatoes	Do not apply within 1 day of harvest.
Broccoli, Egg Plant, Garlic, Leeks, Onions, Peas, Peppers, Pumpkin*, Rutabagas, Shallots & Sweet Potatoes	Do not apply within 3 days of harvest.
Beets, Brussels Sprouts, Cabbage, Cauliflower, Celery, Collards, Endive, Kale, Head Lettuce, Mustard Greens, Radish, Spinach, Swiss Chard & Turnips	Do not apply within 7 days of harvest.
Leaf Lettuce	Do not apply within 14 days of harvest.

*DO NOT APPLY UNLESS LEAVES ARE DRY.

~~VEGETABLES: Numbers in () indicate days required between last application and harvest. Beans (1), Beets (7), Broccoli (3), Brussels Sprouts (7), Cabbage (7),~~

~~**Cantaloupe (1), Cauliflower (7), **Cucumbers (1), Celery (7), Collards (7), Egg Plant (3), Endive (7), Garlic (3), Kale (7), Leeks (3), Lettuce, Head (7), Leaf (14), **Melons (1), Mustard Greens (7), Okra (1), Onions (3), Peas (3), Peppers (3), Potatoes (0), **Pumpkin (3), Radish (7), Rutabagas (3), Shallots (3), **Squash (1), Spinach (7), Strawberries (3), Sweet Potatoes (3), Swiss Chard (7), Tomatoes (1), and Turnips (7).~~

~~TO CONTROL: Aphids Use 2 tsp per gal of water. Fill cap to line 1 two times. Add to 1 gal of water. TO CONTROL: Bean Leaf Beetle, Blister Beetle, Cabbage Looper,~~

~~Harlequin Bug, Imported Cabbageworm, Japanese Beetle, Leafminers, Leafhoppers, Lygus Bug, Mexican Bean Beetle, Onion Maggot (Flies), Onion Thrips, Pickleworm, Red Spider Mite, Strawberry Leafroller, Strawberry Root Weevil, Thrips and Whiteflies Use 1 Tbs per gal of water. TO CONTROL: Cucumber Beetles and Squash~~

~~Vine Borers Use 4 tsp per gal of water.~~

~~**DO NOT APPLY UNLESS LEAVES ARE DRY.~~

10/18

Home Invading Household Pests-Outdoors Only

Amount to Use

Clover Mites: **2 tsp per gal of water** [Fill cap to line 1 two times. Add to 1 gal of water.]

Spray lawns and a 10 ft wide strip along side of house.

Amount to Use

Ants, Crickets, Earwigs, Roaches, Silverfish & Spiders: **8 Tbs (4 fl oz) per gal of water** [Fill cap to line 4 two times. Add to 1 gal of water.]

Outside Residual Adult Mosquito Control: **9 Tbs (4 ½ fl oz) per gal of water** [Fill cap to line 3 nine times. Add to 1 gal of water.]

House Flies: **6 Tbs (3 fl oz) per gal of water for each 1000 sq ft** [Fill cap to line 3 three times. Add to 1 gal of water.]

Apply as a coarse spray to and around lower foundation of house, patios and garbage cans; under porches and shrubbery; along fences; to firewood piles; and other infested areas.

DO NOT USE INSIDE THE HOME. DO NOT USE ON ANIMALS.

~~HOUSEHOLD PESTS-OUTDOORS ONLY (Roaches, Ants, Clover Mites, Spiders, Silverfish, Crickets, Earwigs): 8 Tbs (4 oz) per gal water; and Outside Residual Adult Mosquito Control: 9 Tbs (4 ½ oz) per gal water. Apply as a coarse spray to lower foundation of house and firewood piles. Repeat as necessary. NOTE: If only clover mites (around outside of dwellings and on lawns): Use 2 tsp per gal water and treat above areas in a 10 ft wide strip along side of house. Fill cap to line 1 two times. Add to 1 gal of water. Repeat as necessary.~~

~~DO NOT USE INSIDE THE HOME. DO NOT USE ON ANIMALS.~~

~~HOUSE FLIES: Around Outsides of Dwellings and Outbuildings, Patios, Garbage Containers SPRAY APPLICATION: 6 Tbs (3 oz) to 1 gal water, 3 Tbs cane or dark sugar or molasses may increase effectiveness. Spray around house foundation, under porches, along fences, shrubbery and other infested areas. Use 1 gal diluted spray to 1,000 sq ft area. If ORTHO Lawn Sprayer is used, fill bottle with ORTHO Malathion 50 Insect Spray and plan to cover approximately 7500 sq ft by the time bottle is empty. Avoid contamination of water. Maintain sanitary conditions around outbuildings and other areas to prevent fly breeding.~~

11/8

STORAGE AND DISPOSAL

STORAGE: Keep pesticide in original container. Do not put concentrate or dilute into food or drink containers. Avoid contamination of feed and foodstuffs. Store in a cool, dry place, preferably in a locked storage area. Do not store diluted spray.

DISPOSAL: PRODUCT-Partially filled bottle may be disposed of by securely wrapping original container in several layers of newspaper and discard in trash. CONTAINER-Do not reuse empty bottle. Rinse thoroughly before discarding in trash.

PRECAUTIONARY STATEMENTS

HAZARDS TO HUMANS & DOMESTIC ANIMALS

WARNING: Causes substantial but temporary eye injury. Harmful if swallowed or absorbed through skin. Do not get in eyes. Avoid contact with skin or clothing. Avoid breathing vapors or spray mist. **FIRST AID: IF IN EYES** -in case of eye contact, wash eyes immediately with fresh water for 15 minutes and see a doctor. **IF SWALLOWED** - give water or milk to drink and telephone for medical advice. Consult medical personnel before inducing vomiting. If medical advice cannot be obtained, then take person and product container to the nearest medical emergency treatment center or hospital. **IF ON SKIN** - wash skin with plenty of soap and water. Get medical attention if irritation persists. **IF INHALED** - remove person from exposure area. **Note to Physicians:** Emergency Information call 1-800-454-2333. This product contains a light petroleum solvent and may present an aspiration problem. Malathion is a weak cholinesterase inhibitor. If signs and symptoms of cholinesterase inhibition develop, atropine sulfate is antidotal; 2-PAM (PROTOPAM) may also be given in conjunction with atropine but should not be used alone.

[6/4/97 Reentry icon] Keep children and animals away from treated areas until these areas are dry.

Food utensils such as teaspoons and tablespoons should not be used for food purposes after use with pesticides.

ENVIRONMENTAL HAZARDS: This pesticide is toxic to fish, aquatic invertebrates, and aquatic life stages of amphibians. Do not apply directly to water. Drift and runoff may be hazardous to aquatic organisms in areas near the application site. Do not contaminate water when disposing of equipment washwaters. This product is highly toxic to bees exposed to direct treatment on blooming crops or weeds. Do not apply this product or allow it to drift to blooming crops or weeds if bees are visiting the treatment area. **PHYSICAL OR CHEMICAL HAZARDS:** Do not use or store near heat or open flame.

NOTICE: Buyer assumes all responsibility for safety and use not in accordance with directions.

Medical Information call 1-800-454-2333
Product Information call 1-800-225-2883

12/18

ORTHO®, Malathion 50 Plus®, [6/4/97] RosePride®, SPRAY-ETTE®, ORTHEX®, Dial
'n Spray®, Volck®, SOLARIS® Trademarks of Monsanto Company
FUNGINEX® Trademark of American Cyanamid Company

©Monsanto Company 1997 1995

Manufactured for _____ SOLARIS®

The SOLARIS Group of

Monsanto Company

P.O. Box 5008

San Ramon, CA 94583-0808

Form 0-728-03 7-812-01 Product 1992

EPA Reg. No. 239-739

EPA Est. 239-1A-3¹, 58996-MO-1^A

Superscript is first letter of lot number

Made in USA

13/18

[ORTHO CARTRIDGE SPRAYER ONLY]

- Makes 2 gals spray
- New
- Ready-to-spray Cartridge
- Ready-To-Use Cartridge
- Cartridge Sprayer Refill
- No Spill
- No Mix, No Measure, No Messy Clean Up
- Easy-to-use
- For Exclusive Use with ORTHO Cartridge Sprayer
- Liquid Concentrate
- To be used only with ORTHO Cartridge Sprayer
- No Mixing or Handling Required
- Simple Easy-to-Use Application
- LOCK 'N SPRAY System
- Patented LOCK 'N SPRAY Design
- Patented Twist 'n Lock Design
- Twist and Remove Base for Use
- Savings Coupon Inside
- Special Consumer Offer. See Details Inside
- Save on Your Next Purchase. See Details Inside
- Save on Other ORTHO Products. See Details Inside
- Cartridge
- Simple and Easy to Use
- Eliminates Mixing and Measuring
- Child Resistant Package
- For exclusive use with the ORTHO LOCK 'N SPRAY cartridge sprayer
- No mixing and measuring necessary
- No mixing, no measuring necessary
- Money saving coupon inside
- Save \$.50 on your next purchase. (Coupon on reverse side.)
- Convenient
- LOCK 'N SPRAY System Cartridge
- Quality Guaranteed
- Multipurpose
- Self Sealing Cartridge Lid
- Cartridge Automatically Reseals Itself
- Automatic Dilution
- Use with the ORTHO LOCK'N SPRAY cartridge sprayer
- Cartridge system automatically dilutes the proper proportion of product and water
- See Instruction Booklet Inside Base
- Simple to Use
- No mixing or measuring
- No mixing
- No measuring
- Guaranteed Quality
- No messy measuring
- LOCK 'N SPRAY Cartridge
- LOCK 'N SPRAY Cartridge System
- Accurate
- Accurate dosage
- Premeasured
- No leak
- Carton made from 100% recycled paperboard Minimum 35% Post-Consumer Content

[ORTHO CARTRIDGE SPRAYER ONLY]

The LOCK 'N SPRAY System eliminates mixing, measuring, and messy clean-up. With its unique design and easy one-step application, lawn and garden care is now faster and easier. Simply choose the cartridge application that you need and attach it to the cartridge sprayer(sold separately) as shown below.

14/18

[ORTHO CARTRIDGE SPRAYER ONLY]

[ILLUSTRATION]

DIRECTIONS FOR USE

Remove Base Cup: (Optional)

- Twist bottom to tear label perforation.
- Snap off base cup to view liquid.
- Save base cup and re-attach after use if storage is necessary.
- Connect sprayer to hose.

[ILLUSTRATION]

Attach/Lock Cartridge to Sprayer:

- Push up to seat cartridge firmly against sprayer.
- Grasp top portion of cartridge and twist counterclockwise to "Lock" position.
- Turn water on at faucet.

[ILLUSTRATION]

[ILLUSTRATION]

Water Control Knob Adjustment:

- Turn water control knob on sprayer to • position.
- Pull trigger to spray: Sprayer automatically delivers the proper spray solution

[ILLUSTRATION]

When Finished:

- Twist cartridge in clockwise direction to "UNLOCK" position and remove. Cartridge automatically reseals itself.
- Flush water through sprayer to clean.
- Re-attach base cup to cartridge for storage, if necessary. Cartridges contain liquid concentrate product that can be reused.

15/18

NOTIFICATION
AUG 22 1997

ORTHO[®]

MAKES UP TO 95
GALLONS DILUTED SPRAY

Malathion 50 Plus[®]
Insect Spray

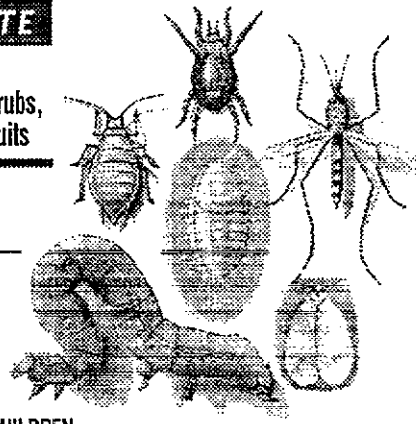


CONCENTRATE

KILLS INSECTS
On Roses, Flowers, Shrubs,
Trees, Vegetables & Fruits

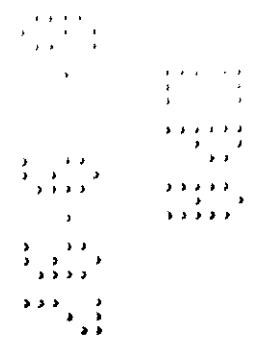
PLUS KILLS
Mosquitos Outdoors

Superior Formula with
ORTHEX[®] Wetting Agent



Active Ingredient _____ 50%
Malathion _____ 50%
*Inert Ingredients _____ 50%
*Contains Petroleum Distillate

KEEP OUT OF REACH OF CHILDREN
WARNING See back panel booklet for
additional precautionary statements.
NET CONTENTS 1 QT / 946 mL



16/18

WHEN TO HARVEST	
Potatoes	May be applied up to day of harvest.
Beans, Cucumbers*, Melons*, Okra, Squash* & Tomatoes	Do not apply within 1 day of harvest.
Broccoli, Egg Plant, Garlic, Leeks, Onions, Peas, Peppers, Pumpkin*, Rutabagas, Shallots & Sweet Potatoes	Do not apply within 3 days of harvest.
Beets, Brussels Spouts, Cabbage, Cauliflower, Celery, Collards, Endive, Kale, Head Lettuce, Mustard Greens, Radish, Spinach, Swiss Chard & Turnips	Do not apply within 7 days of harvest.
Leaf Lettuce	Do not apply within 14 days of harvest.

*DO NOT APPLY UNLESS LEAVES ARE DRY.

Home Invading Pests - Outdoors Only

Amount to Use

Clover Mites: 2 tsp per gal of water
 Spray lawns and a 10 ft wide strip along side of house.

Amount to Use

Ants, Crickets, Earwigs, Roaches, Silverfish & Spiders: 8 Tbs (4 fl oz) per gal of water

Outside Residual Adult Mosquito Control: 9 Tbs (4 1/2 fl oz) per gal of water

House Flies: 6 Tbs (3 fl oz) per gal of water for each 1,000 sq ft

Apply as a coarse spray to and around lower foundation of house, patios and garbage cans; under porches and shrubbery; along fences; to firewood piles; and other infested areas.

DO NOT USE INSIDE THE HOME. DO NOT USE ON ANIMALS.

ORTHO

Open Resealable Label for Directions & Precautions



Malathion 50 Plus[®] Insect Spray

ON ROSES, FLOWERS, SHRUBS, TREES, VEGETABLES & FRUITS (INCLUDING CITRUS)

- Kills ✓ Aphids ✓ Boxelder Bugs ✓ Cabbage Loopers
- ✓ Codling Moths ✓ Cucumber Beetles ✓ Hemlock Woolly Adelgids ✓ Mealybugs ✓ Red Spider Mites
- ✓ Scales ✓ Tent Caterpillars ✓ Thrips ✓ Whiteflies
- ✓ Many Other Foliage Pests

Also combine with Volck[®] Oil Spray to remove sooty mold & help destroy insect eggs.

AROUND HOUSE FOUNDATION

- Kills ✓ Outdoor Mosquitoes ✓ Other Pests

DO NOT USE INSIDE THE HOME. DO NOT USE ON ANIMALS.

This product is specially formulated for residential use only. It contains ORTHOX[®] so spray spreads more evenly and sticks better to plants.



Medical Information call 1-800-454-2333
 Product Information call 1-800-225-2883



Manufacturer for
 The SOLARIS Group of
 Monsanto Company
 P.O. Box 5008
 San Ramon, CA 94583-0808
 Form 0-728-23
 EPA Reg. No. 239-739
 EPA Est. 239-A-3, 58996-MO-1A
 Superscript is first letter of lot number
 Made in USA

SOLARIS[®]



0 71549 01642 5 G

PRESS TO RESEAL

17/18

DIRECTIONS FOR USE

It is a violation of Federal law to use this product in a manner inconsistent with its labeling.

READ ENTIRE LABEL. USE STRICTLY IN ACCORDANCE WITH LABEL PRECAUTIONARY STATEMENTS AND DIRECTIONS.

FOR OUTDOOR HOME USE ONLY

May be applied with a hose-end sprayer such as ORTHO® Dial 'n Spray® or tank sprayer.

Spray thoroughly covering both upper and lower leaf surfaces or other infested plant parts. Repeat as necessary. Wait at least 7 days between applications. Make new dilution for each use.

3 teaspoons (tsp) = 1 Tablespoon (Tbs) = 1/2 fl oz

Ornamentals including Roses, Camellias, Azaleas, Stocks,

Chrysanthemums & Evergreens

(Do not use on Boston, Maidenhair and Pteris ferns, Canaert Juniper or some species of Crassula - example: Jade Plant)

Amount to Use

Aphids: 2 tsp per gal of water

Bagworms, Boxelder Bugs, Fourlined Leaf Bugs, Hemlock Woolly Adelgids, Japanese Beetles, Lacebugs, Leafhoppers (Rose), Mealybugs, Red Spider Mites, Spruce Mites, Tarnished Plant Bugs, Thrips, Whiteflies & Woolly Aphids: 1 Tbs per gal of water

Scales (Black, Oyster Shell & Soft Brown): 2 Tbs per gal of water

Combination Spray with Fungicide on Roses

ORTHO RosePride® Funginex® Rose & Shrub Disease Control may be mixed with this product; when listed insect(s) and disease(s) are found on roses. Follow directions and precautions on both labels.

Apples, Apricots, Cherries, Grapes, Peaches, Pears & Strawberries

Malathion may cause injury to McIntosh and Cortland Apples; to Bosc Pears; and Ribier Grapes.

Amount to Use

Aphids: 2 tsp per gal of water

Bud Moths, Codling Moths, Fourlined Leaf Bugs, Japanese Beetles, Leafhoppers (Grape), Leafrollers (Red-Banded, Fruit Tree & Strawberry), Mealybugs, Pear Psyllids, Plum Curculios, Red Spider Mites, Spittlebugs, Tarnished Plant Bugs, Tent Caterpillars, Thrips, Whiteflies & Woolly Aphids: 1 Tbs per gal of water

Scale Crawlers: 2 Tbs per gal of water

WHEN TO HARVEST

Pears	Do not apply within 1 day of harvest.
Apples, Cherries, Grapes & Strawberries	Do not apply within 3 days of harvest.
Apricots & Peaches	Do not apply within 7 days of harvest.

Mangoes & Citrus (Oranges, Tangerines, Grapefruits, Lemons & Limes)
Do not apply during full bloom.

Amount to Use

Aphids, Scales (Black, Purple, Yellow & Florida Red), Whiteflies & Thrips: 2 tsp per gal of water

Combination with Voick® Oil Spray on Citrus, Avocados, Mangoes,

Gardenias & Ixora

Do not apply during full bloom.

Amount to Use

Aphids, Mealybugs, Red Spider Mites, Scales, Thrips & Whiteflies - Also removes Sooty Mold Fungus through control of Whitefly larvae and helps destroy insect eggs (such as Codling Moth, Oak Moth & Red Spider Mite eggs): 1 Tbs of each product per gal of water

WHEN TO HARVEST

Mangoes	Do not apply within 2 days of harvest.
Avocados & Citrus	Do not apply within 7 days of harvest.

Vegetables & Melons

Amount to Use

Aphids: 2 tsp per gal of water

Beetles (Bean Leaf, Blister, Japanese & Mexican Bean), Cabbage Loopers, Harlequin Bugs, Imported Cabbageworms, Leafminers, Leafhoppers, Leafrollers (Strawberry), Lygus Bugs, Onion Maggots (Flies), Onion Thrips, Pickleworms, Red Spider Mites, Root Weevils (Strawberry), Thrips & Whiteflies: 1 Tbs per gal of water

Cucumber Beetles & Squash Vine Borers: 4 tsp per gal of water

18/18


STORAGE AND DISPOSAL

STORAGE: Keep pesticide in original container. Do not put concentrate or dilute into food or drink containers. Avoid contamination of feed and foodstuffs. Store in a cool, dry place, preferably in a locked storage area. Do not store diluted spray. **DISPOSAL- PRODUCT** - Partially filled bottle may be disposed of by securely wrapping original container in several layers of newspaper and discard in trash. **CONTAINER** - Do not reuse empty bottle. Rinse thoroughly before discarding in trash.

PRECAUTIONARY STATEMENTS

HAZARDS TO HUMANS & DOMESTIC ANIMALS

WARNING: Causes substantial but temporary eye injury. Harmful if swallowed or absorbed through skin. Do not get in eyes. Avoid contact with skin or clothing. Avoid breathing vapors or spray mist. **FIRST AID: IF IN EYES:** In case of eye contact, wash eyes immediately with fresh water for 15 minutes and see a doctor. **IF SWALLOWED:** Give water or milk to drink and telephone for medical advice. Consult medical personnel before inducing vomiting. If medical advice cannot be obtained, then take person and product container to the nearest medical emergency treatment center or hospital. **IF ON SKIN:** Wash skin with plenty of soap and water. Get medical attention if irritation persists. **IF INHALED:** Remove person from exposure area. Note to Physicians: Emergency Information call 1-800-454-2333. This product contains a light petroleum solvent and may present an aspiration problem. Malathion is a weak cholinesterase inhibitor. If signs and symptoms of cholinesterase inhibition develop, atropine sulfate is antidotal. 2-PAM (PROTOPAM) may also be given in conjunction with atropine but should not be used alone.

 Keep children and animals away from treated areas until these areas are dry.

Food utensils, such as teaspoons and tablespoons, should not be used for food purposes after use with pesticides.

ENVIRONMENTAL HAZARDS: This pesticide is toxic to fish, aquatic invertebrates, and aquatic life stages of amphibians. Do not apply directly to water. Drift and runoff may be hazardous to aquatic organisms in areas near the application site. Do not contaminate water when disposing of equipment washwaters. This product is highly toxic to bees exposed to direct treatment on blooming crops or weeds. Do not apply this product or allow it to drift to blooming crops or weeds if bees are visiting the treatment area. **PHYSICAL OR CHEMICAL HAZARDS:** Do not use or store near heat or open flame.

NOTICE: Buyer assumes all responsibility for safety and use not in accordance with directions.



Medical information call 1-800-454-2333

Product information call 1-800-225-2883

ORTHO®, Dial 'n Spray®, Malathion 50 Plus®, ORTHIX®, RosePride®, SOLARIS®, Volk®

Trademarks of Monsanto Company

Furigen® Trademark of American Cyanamid Company

©Monsanto Company 1997

Manufactured for The SOLARIS Group of Monsanto Company

P.O. Box 5008 San Ramon CA 94503-0808

Form Q-728-03

EPA Reg. No. 239-739

EPA Est. 239-1A-31, 58996-MO-1A Superscript is first letter of lot number Made in USA

