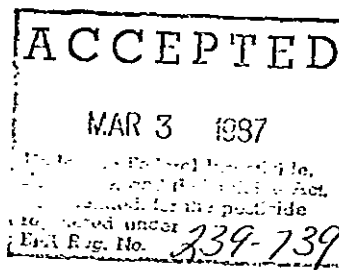


ORTHO Malathion 50 Insect Spray
EPA Reg. No. 239-739

Submitted : 8/12/86

COPY A

Mango



COPY B

VEGETABLES: Numbers in () indicate days required between last application and harvest. Asparagus (1), Beans (1), Beets (7), Broccoli (3), Brussels Sprouts (7), Cabbage (7), *Cantaloupe (1), Cauliflower (7), *Cucumbers (1), Celery (7), Collards (7), Egg Plant (3), Endive (7), Garlic (3), Kale (7), Leeks (3), Lettuce (Head (7), Leaf (14), *Melons (1), Mustard Greens (7), Okra (1), Onions (3), Peas (3), Peppers (3), Potatoes (0), *Pumpkin (3), Radish (7), Rutabagas (3), Shallots (3), *Squash (1), Spinach (7), Strawberries (3), Sweet Potatoes (3), Swiss Chard (7), Tomatoes (1), and Turnips (7).

TO CONTROL: Aphids - Use 2 teaspoonfuls per gallon of water. TO CONTROL: Asparagus Beetles, Bean Leaf Beetles, Blister Beetles, Cabbage Loopers, Harlequin Cabbage Bugs, Imported Cabbageworms, Japanese Beetles, Leafminers, Leafhoppers, Lygus Bugs, Mexican Bean Beetles, Onion Maggots (Flies), Onion Thrips, Pickleworm, Red Spider Mite, Strawberry Leafroller, Strawberry root weevil, Thrips and Whiteflies - Use 1 Tablespoonful per gallon of water. TO CONTROL: Cucumber Beetles and Squash Vine Borers - Use 4 Teaspoonfuls per gallon of water.

*DO NOT APPLY UNLESS LEAVES ARE DRY.

CONFIDENTIAL

PROPERTY OF

CHEVRON CHEMICAL COMPANY

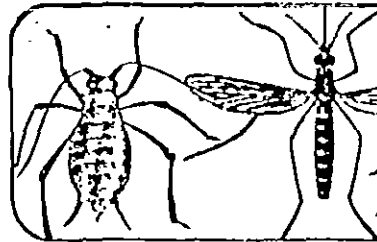
UNTIL ACCEPTED BY EPA

BEST AVAILABLE



Ortho Malat Insect

Contains Wetting
Kills Insects — A
Mosquitoes, Red



Active Ingredients	By Wt
* Malathion	56%
Xylene — Range Aromatic Solvent	33%
Inert Ingredients	11%
* O, O dimethyl dithiophosphate of diethyl mercaptosuccinate	

NET CON

PRECAUTIONARY STATEMENTS

HAZARDS TO HUMANS & DOMESTIC ANIMALS

WARNING: Causes serious eye irritation. Harmful if swallowed. Do not get in eyes. Avoid contact with skin or clothing. Avoid breathing vapors or spray mist.

STATEMENT OF PRACTICAL TREATMENT: In case of eye contact, wash eyes immediately with fresh water for 15 minutes and see a doctor. If swallowed, give water or milk to drink and telephone for medical advice. Consult medical personnel before inducing vomiting. If medical advice cannot be obtained, contact person and product container to the nearest medical emergency treatment center or hospital. If on skin, wash skin with plenty of soap and water. If inhaled, remove person from exposure area.

Note to Physicians: Emergency information—CA 94151 233 3337. This product contains a light petroleum solvent and may cause an aspiration problem. Malathion, a weak cholinesterase inhibitor, has a 3-day period of cholinesterase inhibition; development of atropine sulfate is antidotal. 2 PAM (PRALIDOXIME) may also be given in conjunction with atropine but should not be used alone. Keep children and animals away from treated areas until these areas are dry. Foodstuffs such as teaspoons and tablespoons should not be used for food purposes after use with pesticides.

ENVIRONMENTAL HAZARDS: This product is toxic to fish, shrimp, crabs and other aquatic organisms. Do not apply directly to water. Do not apply where runoff is likely to occur. Do not apply when weather conditions favor drift from areas treated. Do not contaminate water by cleaning of equipment or disposal of wastes.

This product is highly toxic to bees exposed to direct treatment residues on crops. Protective information may be obtained from your Cooperative Agricultural Extension Service. **PHYSICAL OR CHEMICAL HAZARDS:** Do not use or store near heat or open flame.

DIRECTIONS FOR USE

It is a violation of Federal law to use this product in a manner inconsistent with its labeling.

READ ENTIRE LABEL USE STRICTLY IN ACCORDANCE WITH LABEL PRECAUTIONARY STATEMENTS AND DIRECTIONS

DIRECTIONS: Spray thoroughly covering both upper and lower leaf surfaces or other infested plant parts. Repeat as necessary. Can be used up to 3 days of harvest on food crops unless otherwise specified. Make new dilution for each use. **NOTE:** 3 teaspoons = 1 Tablespoon = 1/2 oz. **CONTAINS SPREADER**

ORNAMENTALS (Roses, Camellias, Azaleas, Stocks, Chrysanthemums, Evergreens)—
Aphids: 2 teaspoons to 1 gal. water. Red Spider Mites, Spruce Mites, Mealybugs, Lacebugs, Woolly Apher, Whitefly Thrips, Tarnished Plant Bug, Fourlined Leaf Bug, Bagworms, Rose Leafhopper, Japanese Beetle Adults, Box Elder Bugs: 1 Tablespoon (1/2 oz) per gal. water. Scales (Black Scale, Soft Brown Scale, Oyster Shell Scale): 2 Tablespoons per gal. water. Do not use on Boston, Maidenhair and Peters ferns, Canary Juniper and some species of Crassula (example: Jade Plant).

Combination Spray with Fungicide on Roses — ORTHO FUNGINEX® Rose Disease Control may be mixed with this product when listed insect(s) and disease(s) are found on roses. Follow directions and precautions on both labels.

FRUIT (Apples, Peaches, Grapes, Apricots, Cherries, Peaches, Strawberries)— Aphids: 2 teaspoons to 1 gal. water. Codling Moth, Tent Caterpillar, Red Banded Leafroller, Plum Curculionid, Bud Moth, Pear Tree Leafroller, Strawberry Leafroller, Spinylegged, Red Spider Mites, Mealybugs, Woolly Apher, Whitefly Thrips, Tarnished Plant Bug, Fourlined Leaf Bug, Grape Leafhopper, Pear Psyllid, Japanese Beetle Adults: 1 Tablespoon (1/2 oz) per gal. water. Scales (Crawlers): 2 Tablespoons per gal. water. Malathion may cause injury to McIntosh and Cortland varieties of apples, to Bosc pears and Ribier grapes. Do not apply to Peaches within 1 day, or to harvest of Apricots and Peaches within 7 days of harvest.

CITRUS (Oranges, Tangerines, Grapefruit, Lemons, Limes)— Aphids, Whiteflies, Black Scale, Purple Scale, Yellow Scale, Fleas, Red Scale, Thrips: 2 teaspoons per gal. water. Thorough coverage of branches and lower and upper leaf surfaces is necessary to control insects. Do not apply during fruiting. Do not apply within 7 days of harvest.

VEGETABLES (Broccoli, Brussels Sprouts, Cabbage, Cauliflower, Kale, Beans, Peas, Potatoes, Tomatoes, Radish, Squash, Tomatoes)— Aphids: 2 teaspoons to 1 gal. water. Red Spider Mites, Fleas, Thrips, Whitefly Thrips, Tarnished Plant Bug, Fourlined Leaf Bug, Pear Tree Leafhopper, Japanese Beetle Adults: 1 Tablespoon (1/2 oz) per gal.

water. Do not apply to Broccoli and Peas within 3 days of harvest, and to Brussels Sprouts, Cabbage, Radish, Squash, Tomatoes, Head Lettuce, Cauliflower or Kale within 7 days of harvest. Use up to day of harvest on potatoes. Do not apply to leaf lettuce within 14 days of harvest.

HOUSEHOLD PESTS—OUTDOORS ONLY (Roaches, Ants, Spiders, Mosquitoes, Silverfish, Crickets, Clover Mites, Earwigs): 8 Tablespoons (4 oz) per gal. water. Apply by means of a coarse spray or paint brush to firewood piles. Clover Mites around outside of dwellings and on lawns—2 teaspoons per gal. water. Spray lower foundation of house as well as ground, lawns and plants in an area 10 ft wide along side of house. Repeat as necessary. Outside residual adult Mosquito control—3 Tablespoons (1 1/2 oz) per gal. water. Spray foundation of house, shrubs, low trees and lawn areas. Repeat as necessary. **DO NOT USE IN THE HOME**

HOUSEFLIES around Dw. things (outside only), Outbuildings, Dairy Barns, Chicken Houses, Stables, Dog Kennels, Pstios, Garbage Containers—**SPRAY APPLICATION:** 6 Tablespoons (3 oz) to 1 gal. water, 3 Tablespoons cane or dark sugar or molasses may increase effectiveness. Spray around house foundation, under porches, along fences, shrubbery and other infested areas. Use 1 gal. diluted spray to 1200 sq. ft. area. **HORNED LARK SPRAYERS** used: Fill bottle with ORTHO Malathion 50 Insect Spray and plug to cover approximately 7500 sq. ft. by the time bottle is empty. **DO NOT APPLY THIS DOSAGE TO ANIMALS.** Remove calves under one month of age before treating. Avoid contamination of milk, milk equipment and water. Maintain sanitary conditions around barns, outbuildings and other areas to prevent fly breeding.

FLEAS on Dogs and Cats: 2 Tablespoons (1 oz) per gal. water. Wet thoroughly to penetrate hair. Do not apply more than once weekly. **Animal Quarters (Outdoors):** 10 Tablespoons (5 oz) per gal. water. Spray kennels, pens, yards, lawns and under houses, at the rate of 1 gal. diluted spray in a tank type sprayer, per 1000 sq. ft. Remove animals before treatment, putting in fresh bedding after treatment.

BEEF CATTLE Horn Flies— Use 1/2 pt. (8 oz) in 5 gals. water (3 1/2 Tablespoons per gal. water). Apply a complete coverage spray. Repeat applications at two week intervals if needed. Do not apply to lactating dairy animals. Do not apply to non-lactating dairy cattle within 2 weeks of freshening. Do not treat calves under 1 month of age. Avoid contamination of feed, food containers and watering troughs.

CHICKENS, DUCKS, GEESE, TURKEYS: Northern Fowl Mite, Poultry Lice— 2 Tablespoons (1 oz) per 1 gal. water per 100 to 150 birds. Spray directly on birds and repeat at 4 to 8 week intervals or as necessary. **POULTRY HOUSE TREATMENT:** Northern Fowl Mite, Chicken Red Mite, Poultry Lice, Flies— 4 Tablespoons (2 oz) per 1 gal. water. Apply sprays liberally to litter, walls, ceilings, roosts, nests and adjacent areas. Force spray into all cracks and crevices. Repeat as necessary. **Poultry Ticks—** 6 to 7 oz. per 1 gal. water. Apply spray liberally to walls, ceilings and adjacent areas. Force spray into cracks and crevices. Repeat as necessary. **ROOST PAINT:** Chicken Red Mite, Poultry Lice— 4 Tablespoons (2 oz) per 1 gal. water. Brush on all 1 pt. per 150 ft. of roost and repeat as necessary. Avoid contamination of feed, feeding troughs and water fountains with spray.

STORAGE AND DISPOSAL

STORAGE: Keep pesticide in original container. Do not put concentrate or dilute into food or drink containers. Avoid contamination of feed and foodstuffs. Store in a cool, dry place, preferably in a locked storage area. Do not store diluted spray.

DISPOSAL—PRODUCT: Partially filled bottle may be disposed of by securely wrapping original container in several layers of newspaper and discard in trash. **CONTAINER—** Do not reuse empty bottle. Rinse thoroughly before discarding in trash.

NOTICE: Buyer assumes all responsibility for safety and use not in accordance with directions.

FUNGINEX®—Reg. TM of CELANERCK GmbH Co.
for Telone fungicide

Chevron Chemical Company © 1985
Ortho Consumer Products Division
San Francisco, CA 94120 3114
R Form 3728 P Product 1592 Made in U.S.A.
EPA Reg. No. 233-733 ZE

