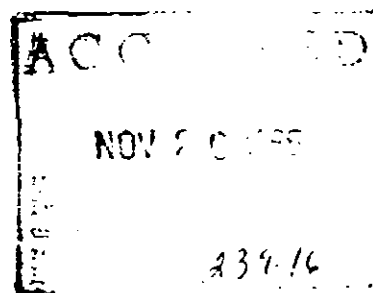


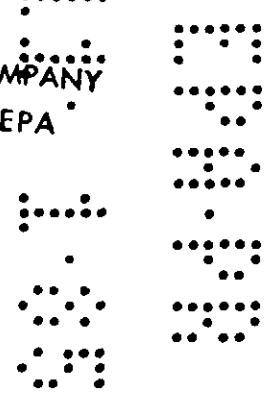
VOLCK Oil Spray
EPA Reg. No. 239-16
Submitted: Oct. 25, 1985

COPY A

FOR BEST RESULTS: Use 5 Tbs. VOLCK Oil Spray and 5 Tbs. ORTHORIX Spray or ORTHO Dormant Disease Control in 1 gal. water. Keep agitated during spraying. Note precautions on ORTHORIX or ORTHO Dormant Disease Control label before use.

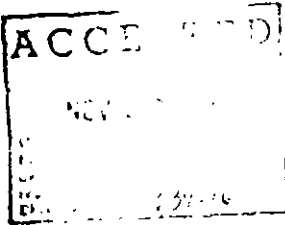


CONFIDENTIAL
PROPERTY OF
CHEVRON CHEMICAL COMPANY
UNTIL ACCEPTED BY EPA




ORTHO

VOLCK[®]
Oil
Spray



**A HIGHLY REFINED
OIL SPRAY
INSECTICIDE**

**For Use Against
Scale Insects
Red Spider Mites
Mealybugs
Whiteflies and
Certain Other Garden
Pests**

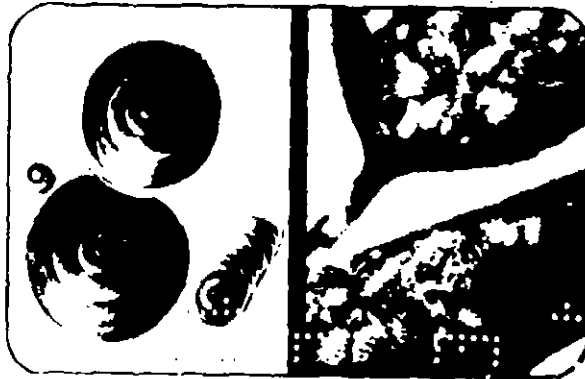
**Acts as Excellent
Leaf Polish**



ORTHO

VOLCK[®]
Oil Spray

**Controls Scale Insects, Mealybugs, Whiteflies,
Red Spider Mites and Certain Other Garden Pests
Acts as Excellent Leaf Polish**



**DORMANT
& GROWING
SEASON
INSECT
SPRAY**

Active ingredient
Petroleum Oil
Inert ingredients
(Pe. Oil Min U.R. 91% Class Lt. Med)

By wt
97%
3%

Keep out of reach of children.

CAUTION

See back panel for additional precautionary statements

NET CONTENTS 1 GAL.



ORTHO

VOLCK[®] Oil Spray

A HIGHLY REFINED OIL SPRAY INSECTICIDE

For Use Against Scale Insects Red Spider Mites Mealybugs Whiteflies and Certain Other Garden Pests

Acts as Excellent Leaf Polish

Chevron Chemical Company © 1984
Ortho Consumer Products Division
San Francisco CA 94120 7144
Richmond CA 94804 0036
R Farm 10171 E. Product 710 Made in U.S.A.
EPA Reg. No. 239 16 AA

EPA Est. 239 No. 1 239 M(1) 1
Subject to review and approval of the Agency

PRECAUTIONARY STATEMENTS

HAZARDS TO HUMANS & DOMESTIC ANIMALS

CAUTION Harmful if swallowed. Avoid inhalation of vapors or sprays from the 2-gal. container. Avoid eye contact. This material contains light hydrocarbon liquid and an aspiration hazard may exist. **STATEMENT OF PRACTICAL TREATMENT** If swallowed, do not induce vomiting because of possible aspiration hazard. Call a physician immediately. In case of eye contact, immediately flush eyes with plenty of fresh water. **Note to Physicians:** Emergency information: call (415) 233-3337. **ENVIRONMENTAL HAZARDS** This product is toxic to fish. Do not apply directly to water. Do not apply where runoff is likely to occur. Do not contaminate water by cleaning of equipment or disposal of wastes. **PHYSICAL OR CHEMICAL HAZARDS** Do not use or store near heat or open flame.

DIRECTIONS FOR USE It is a violation of Federal law to use this product in a manner inconsistent with its labeling. **READ ENTIRE LABEL USE STRICTLY IN ACCORDANCE WITH LABEL PRECAUTIONARY STATEMENTS AND DIRECTIONS**

DIRECTIONS Shake well before using. Use a forceful spray wetting pests and all parts of plants thoroughly. Make new dilution for each use.

Be sure VOLCK Oil Spray on foliage within 30 days before application. Avoid spraying when temperature is in the 80's or higher when plants are suffering from drought. Oil sprays should not be applied to broadleaved evergreens or palms when freezing or near freezing temperatures may be expected. Do not use on Maple, Hawthorn, Locust, Elm, Fir, Juniper, Magnolia, etc. or non-woody plants unless specified. VOLCK Oil Spray may cause discoloration of Florida Citrus. Do not use in combination with or closely following treatment with ORTHO DEER and/or other plant growth regulators.

FOR DORMANT USE To Control Scale Insects, Red Spider Mites and Mealybugs on Dormant Shrubs, Evergreens (note caution), Woody Plants, Fruit Trees (Apples, Plums, Pears, Apricots, Peaches, Cherries) and Shade Trees: Use 1 part VOLCK Oil Spray in 25 parts of water (2 1/2 Tbs. per gal. water).

GROWING SEASON - To Control Scale Insects, Red Spider Mites, Mealybugs and Whitefly Larvae on Citrus (Oranges, Lemons, Grapefruit, Tangerines, Limes), Fruit Trees (Apples, Plums, Pears, Apricots, Peaches, Cherries), Shade Trees, Evergreens, Camellias, Azaleas, Hardy Shrubs: Use 1 part VOLCK Oil Spray in 50 parts water (5 Tablespoonfuls (2 1/2 oz.) per gal. water). This application is also effective in the removal of sooty mold fungus through the control of whitefly larvae.

COMBINATION WITH ORTHO Malathion 50 Insect Spray on Citrus, Avocados, Mangoes, Gardenias and Ixora for Control of Scale Insects, Red Spider Mites, Mealybugs, Whiteflies, Aphids, Thrips and for the removal of Sooty Mold Fungus through control of Whitefly Larvae: Use 1 Tablespoonful VOLCK Oil Spray and 1 Tablespoonful ORTHO Malathion 50 Insect Spray for each gallon of diluted spray. May be applied on Avocadoes up to within 7 days of harvest to Grapefruit, Lemons, Limes and Oranges up to within 7 days of harvest but not during full bloom, and to Mangoes up to within 2 days of harvest. **OVICIDE** Helps to destroy insect eggs such as Red Spider Mite Eggs, Oak Moth Eggs and Codling Moth Eggs.

COMBINATION WINTER SPRAY
FRUIT TREES (Apples, Plums, Pears, Apricots, Peaches, Cherries) **ROSES AND ORNAMENTALS** (Dormant deciduous only) - for Control of San Jose Scale, Rose Scale, Oyster Shell Scale, Brown Apricot Scale, Black Scale and Overwintering Insect Eggs: **BOR BEST PESTICIDE** Use 2 1/2 Tablespoonfuls VOLCK Oil Spray and 2 1/2 Tablespoonfuls ORTHO BOR Spray in 1-gallon water. Keep agitated during spraying. Note cautions on ORTHO BOR Spray label before use.

AS A LEAF POLISH - To brighten leaves of hardy house plants: Use 1 part VOLCK Oil Spray in 100 parts water (3 Tablespoonfuls (1 1/2 oz.) per gal.).

GREENHOUSES To Control Scale Insects, Red Spider Mites, Whitefly, Mealybugs on Hardy Shrubs, Gardenias, Camellias and Azaleas: Use 2 Tablespoonfuls (1 oz.) per gal. water. Allow at least 60 days between oil sprays and limit to 3 applications per year.

PALM TREES Scale Insects, Mealybugs, Red Spider Mites: Use 1 part VOLCK Oil Spray in 100 parts water (3 Tablespoonfuls (1 1/2 oz.) per gal.). Note Caution.

AZALEAS, CAMELLIAS Scale Insects, Red Spider Mites, Mealybugs, Whitefly Larvae, Lace Bug Larvae: Use 1 part in 50 parts water (5 Tablespoonfuls (2 1/2 oz.) per gal.). Apply in spring after blooming and in fall prior to blooming.

DILUTION TABLE - 1 tsp. = 1 teaspoonful, 1 Tbs. = 1 Tablespoonful.

Add Water to make	1 to 25 (4%)	1 to 50 (2%)	1 to 100 (1%)	1 to 200 (1/2%)
1 Gal.	1/2 Pt.	5 Tbs.	1 Tbs.	4 Tsp.
3 Gals.	1 Pt.	1/2 Pt.	4 Pt.	4 Tbs.

IF ORTHO SPRAYETTE Garden Hose Sprayer is used - Follow directions on the bottle.

STORAGE AND DISPOSAL

STORAGE Keep pesticide in original container. Do not put concentrate or dilute into food or drink containers. Avoid contamination of food and feedstuffs. Store in a cool, dry place, preferably in a locked storage area. Do not store diluted spray.

DISPOSAL PRODUCT - Partially filled can may be disposed of by securely wrapping original container in several layers of newspaper and discard in trash. **CONTAINER** - Do not reuse empty can. Rinse thoroughly before discarding in trash.

NOTICE: Buyer assumes all responsibility for safety and use not in accordance with directions.