



ORTHO



ORTHO

VOLCK[®] Oil Spray

ACCEPTED
 JUN 16 1982
 U.S. Environmental Protection Agency
 Pesticide Act
 as amended for the pesticide
 registered under
 EPA Reg. No. 239-16

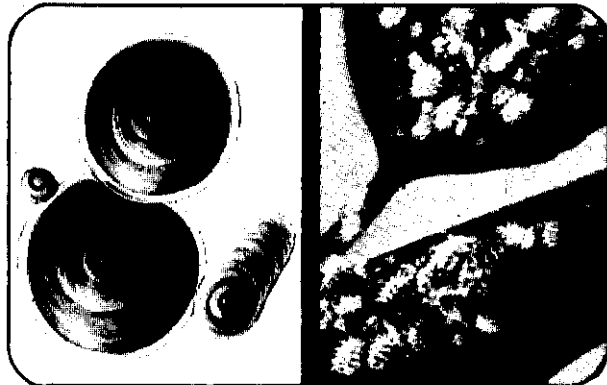
VOLCK[®] Oil Spray

**A HIGHLY REFINED
OIL SPRAY
INSECTICIDE**

**Controls Scale Insects, Mealybugs, Whiteflies,
Red Spider Mites and Certain Other Garden Pests
Acts as Excellent Leaf Polish**

**For Use Against
Scale Insects
Red Spider Mites
Mealybugs
Whiteflies and
Certain Other Garden
Pests**

**Acts as Excellent
Leaf Polish**



**DORMANT &
GROWING SEASON
INSECT SPRAY**

Active Ingredient	By Wt.
Petroleum Oil	97%
Inert Ingredients	3%
(Pet. Oil-Min. U.R. 91% - Class. Lt.-Med.)	

**Keep out of reach of children.
CAUTION**
See back panel for additional precautionary statements.

NET CONTENTS 1 GAL.



RECEIVED
JUN 8 1982



ORTHO

**VOLCK[®]
Oil
Spray**

**A HIGHLY REFINED
OIL SPRAY
INSECTICIDE**

**For Use Against
Scale Insects
Red Spider Mites
Mealybugs
Whiteflies and
Certain Other Garden
Pests**

**Acts as Excellent
Leaf Polish**

Chevron Chemical Company
Ortho Consumer Products Division
San Francisco CA 94120-7144
Richmond CA 94804-0036
R Form 10121-A Product 710 Made in U.S.A.
EPA Reg. No. 239-16

EPA Est. 239-NJ-1, 239-MO-1
Superscript used is first letter of lot number

PRECAUTIONARY STATEMENTS

HAZARDS TO HUMANS & DOMESTIC ANIMALS

CAUTION: Harmful if swallowed. Avoid inhalation of vapors or spray mist. Wash hands after use. Avoid eye contact. This material contains light hydrocarbon liquid, and an aspiration hazard may exist. **STATEMENT OF PRACTICAL TREATMENT:** If swallowed, do not induce vomiting because of possible aspiration hazard. Call a physician immediately. In case of eye contact, immediately flush eyes with plenty of fresh water. **Note to Physicians:** Emergency Information— call (415) 233-3737.

ENVIRONMENTAL HAZARDS: This product is toxic to fish. Do not apply directly to water. Do not apply where runoff is likely to occur. Do not contaminate water by cleaning of equipment or disposal of wastes. **PHYSICAL OR CHEMICAL HAZARDS:** Do not use or store near heat or open flame.

DIRECTIONS FOR USE: It is a violation of Federal law to use this product in a manner inconsistent with its labeling.

READ ENTIRE LABEL. USE STRICTLY IN ACCORDANCE WITH LABEL PRECAUTIONARY STATEMENTS AND DIRECTIONS.

DIRECTIONS: Shake well before using. Use a forceful spray, wetting pests and all parts of plants thoroughly. Make new dilution for each use.

Do not use VOLCK Oil Spray on foliage within 30 days before or after using sulfur. Avoid spraying when temperature is excessively high or when plants are suffering from drought. Oil sprays should not be applied to broadleaved evergreens or palms when freezing or near freezing temperatures may be expected. Do not use on Maidenhair Ferns, Cocos Palms, Maples, etc. or non-woody plants unless specified. VOLCK Oil Spray may cause discoloration to Blue Spruce. Do not use in combination with or closely following treatment with ORTHOCIDE Garden Fungicide.

FOR DORMANT USE—To Control Scale Insects, Red Spider Mites and Mealybugs on Dormant Shrubs, Evergreens (note caution), Woody Plants, Fruit Trees (Apples, Plums, Pears, Apricots, Peaches, Cherries) and Shade Trees: Use 1 part VOLCK Oil Spray in 25 parts of water (1/2 pt. (5 1/2 oz.) per gal. water).

GROWING SEASON—To Control Scale Insects, Red Spider Mites, Mealybugs and Whitefly Larvae on Citrus, (Oranges, Lemons, Grapefruit, Tangerines, Limes), Fruit Trees, (Apples, Plums, Pears, Apricots, Peaches, Cherries), Shade Trees, Evergreens, Camellias, Azaleas, Hardy Shrubs: Use 1 part VOLCK Oil Spray in 50 parts water (5 Tablespoonfuls (2 1/2 oz.) per gal. water). This application is also effective in the removal of sooty mold fungus through the control of whitefly larvae.

COMBINATION WITH ORTHO Malathion 50 Insect Spray on Citrus, Avocados, Mangoes, Gardenias and Ixora for Control of Scale Insects, Red Spider Mites, Mealybugs, Whiteflies, Aphids, Thrips and for the removal of Sooty Mold Fungus through control of Whitefly Larvae—Use 1 Tablespoonful VOLCK Oil Spray and 1 Tablespoonful ORTHO Malathion 50 Insect Spray for each gallon of diluted spray. May be applied on Avocados up to within 7 days of harvest; to Grapefruit, Lemons, Limes and Oranges up to within 7 days of harvest but not during full bloom, and to Mangoes up to within 2 days of harvest. **OVICIDE:** Helps to destroy insect eggs such as Red Spider Mite Eggs, Oak Moth Eggs and Codling Moth Eggs.

COMBINATION WINTER SPRAY

FRUIT TREES (Apples, Plums, Pears, Apricots, Peaches, Cherries), ROSES AND ORNAMENTALS (Dormant, deciduous only)—for Control of San Jose Scale, Rose Scale, Oyster Shell Scale, Brown Apricot Scale, Black Scale and Overwintering Insect Eggs: **FOR BEST RESULTS:** Use 5 Tablespoonfuls VOLCK Oil Spray and 5 Tablespoonfuls ORTHORIX Spray in 1 gallon water. Keep agitated during spraying. Note cautions on ORTHORIX Spray label before use.

AS A LEAF POLISH—To brighten leaves of hardy house plants—Use 1 part VOLCK Oil Spray in 100 parts water (3 Tablespoonfuls (1 1/2 oz.) per gal.).

GREENHOUSES: To control Scale Insects, Red Spider Mites, Whitefly, Mealybugs on Hardy Shrubs, Gardenias, Camellias and Azaleas—2 Tablespoonfuls (1 oz.) per gal. water. Allow at least 60 days between oil sprays and limit to 3 applications per year.

PALM TREES: Scale Insects, Mealybugs, Red Spider Mites—Use 1 part VOLCK Oil Spray in 100 parts water (3 Tablespoonfuls (1 1/2 oz.) per gal.). Note Caution.

AZALEAS, CAMELLIAS: Scale Insects, Red Spider Mites, Mealybugs, Whitefly Larvae, Lace Bug Larvae—Use 1 part in 50 parts water (5 Tablespoonfuls (2 1/2 oz.) per gal.). Apply in spring after blooming and in fall prior to blooming.

DILUTION TABLE—1 tsp. =1 teaspoonful; 1 Tbs. =1 Tablespoonful

Add Water to make	1 to 25 (4%)	1 to 50 (2%)	1 to 100 (1%)	1 to 200 (1/2%)
1 Gal.	1/2 Pt.	5 Tbs.	3 Tbs.	4 tsps.
3 Gals.	1 Pt.	1/2 Pt.	1/4 Pt.	4 Tbs.

IF SPRAY-ETTE Garden Hose Sprayer is used—Follow directions on the bottle.

STORAGE AND DISPOSAL: Keep pesticide in original container. Do not put concentrate or dilute into food or drink containers. Do not store diluted spray. Do not reuse empty container. Wrap container and put in trash collection.

NOTICE: Buyer assumes all responsibility for safety and use not in accordance with directions.