

FLOTOX Garden Sulfur  
EPA Reg. No. 239-15  
Submitted: January 31, 1985

COPY A

**PHYSICAL OR CHEMICAL HAZARDS**

Store away from sparks, fire and flame. Isolate from oxidizing materials.

**CONFIDENTIAL**  
PROPERTY OF  
**CHEVRON CHEMICAL COMPANY**  
UNTIL ACCEPTED BY EPA

BEST AVAILABLE COPY



# ORTHO

ACCEPTED  
REREGISTERED  
JUL 17 1985  
Under the Federal Insecticide, Fungicide, and Rodenticide Act as amended, for the pesticide registered under EPA Reg. No. 239-15

# FLOTOX®

# Garden Sulfur

10pt → PRECAUTIONARY STATEMENTS ← 10pt  
HAZARDS TO HUMANS & DOMESTIC ANIMALS ← 10pt  
14pt → CAUTION: Causes eye irritation. Avoid contact with eyes. Wash thoroughly after using. Avoid breathing spray mists. STATEMENT OF PRACTICAL TREATMENT: In case of eye contact, wash eyes immediately with fresh water for at least 15 minutes. See a doctor if irritation persists. Note to Physicians: Emergency Information - call (415) 233-3737.  
10pt → ENVIRONMENTAL HAZARDS: Do not appl. directly to water.

**DIRECTIONS FOR USE**  
It is a violation of Federal law to use this product in a manner inconsistent with its labeling.  
READ ENTIRE LABEL, USE STRICTLY IN ACCORDANCE WITH LABEL PRECAUTIONARY STATEMENTS AND DIRECTIONS.

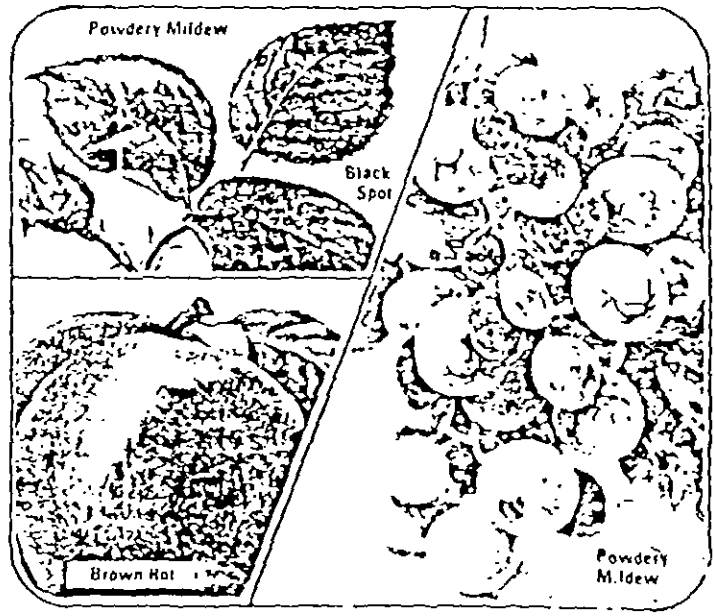
**DIRECTIONS**  
As a Spray - Mix 2 1/2 level Tablespoons FLOTOX Garden Sulfur in a small amount of water stirring until a thin paste is formed then add water to make 1 gallon of mixture. Stir thoroughly. Make new dilution for each use.  
Do not use within 4 weeks of an of spray treatment. Sulfur may cause injury to foliage if applied when temperature is exceedingly high. Do not make applications at this time.

| PLANTS  | PESTS   | COMMENTS  |
|---|---|---|
| ROSES   | Powdery Mildew, Black Spot, Combination spray to control Powdery Mildew, Black Spot, Aphids, Red Spider, Thrips, Leafhopper | Dust or spray every 7 to 10 days during growing season.<br>2 1/2 level Tablespoons FLOTOX Garden Sulfur plus 1 Tablespoon ISOTOX Insect Spray per gallon water  |
| DAHLIAS<br>CHRYSANTHEMUMS<br>PEAS BEANS   | Powdery Mildew  | Dust or spray every 7 to 10 days during growing season  |
| GRAPES  | Powdery Mildew  | Dust or spray when buds begin to break and at intervals of 2 weeks for at least 4 applications (6 treatments may be necessary)  |
| CHERRIES<br>PEACHES PLUMS<br>PRUNES   | Brown Rot   | Spray or dust just before fruit starts to ripen   |
| APPLES<br>PEARS   | Scab  | Spray when buds begin to swell and at 10 day intervals until 2 weeks after petal fall. During wet weather make additional treatments  |
| TOMATOES  | Russet Mite<br>Red Spiders  | Dust or spray when fruit begins to set to clean up early infestations. Repeat treatments as necessary. Do not apply sulfur on tomatoes within 40 days of harvest if they are to be canned in metal containers.<br>Dust or spray when pests appear. Repeat as necessary. |
| CAMELIAS<br>AZALEAS<br>RHODODENDRONS<br>HEATHER and many other acid-loving plants |   | SOIL CORRECTIVE - Apply approximately 1 Tablespoon per square yard of soil surface around listed plant. Annually. Heavy Acids Soil. Apply at same rate, preferably in fall. Prepared New Lawn Soil - Use for deep correction only. Do not use for surface correction.   |
| PREPARED NEW IN SOIL  |   |   |

**STORAGE AND DISPOSAL**  
**STORAGE:** Keep pesticide in original container. Do not put concentrate or dilute into food or drink containers. Avoid contamination of feed and foodstuffs. Store in a cool, dry place, preferably in a locked storage area. Do not store diluted spray.  
**DISPOSAL:** PRODUCT - Partially filled canister may be disposed of by securely wrapping original container in several layers of newspaper and discard in trash. CONTAINER - Do not reuse empty canister. Discard canister in trash.

NOTICE: Buyer assumes all responsibility for safety and use not in accordance with directions.

DUST OR SPRAY  
FOR USE ON MANY FRUIT TREES,  
GRAPES, AND ORNAMENTALS  
Controls Powdery Mildew, Brown Rot, Scab,  
Black Spot, and Certain Other Pests



Active Ingredient Sulfur ..... 90%  
Inert Ingredients ..... 10%  
(Sulfur fineness 90% through a 325 mesh screen)

Chevron Chemical Company  
Ortho Consumer Products Division  
San Francisco, CA 94170-7144  
Richmond, CA 94804-0036  
EPA Form 70715-A Product 35312 Made in U.S.A.  
EPA Reg. No. 73915 AA

PA Est. 739 CA 1 739 NJ 1 739 MO 1  
Subscript used is first letter of lot number

10pt → Keep out of reach of children  
14pt → CAUTION  
See back panel for additional precautionary statements.

**CONFIDENTIAL**  
PROPERTY OF  
**CHEVRON CHEMICAL COMPANY**  
UNTIL ACCEPTED BY EPA

NET WT. 1 LB. 9 OZ.