

228-216

01/30/2004

1/8

Please read instructions on reverse before completing form.

Form Approved. OMB No. 870-0060



United States
Environmental Protection Agency
Washington, DC 20460

Registration
 Amendment
 Other

OPP Identifier Number
292590

Application for Pesticide - Section I

1. Company/Product Number 228-216	2. EPA Product Manager J. I. Miller	3. Proposed Classification <input checked="" type="checkbox"/> None <input type="checkbox"/> Restricted
4. Company/Product (Name) Riverdale Triamine Premium 6666 Liquid Weed And Feed	PM# 23	
5. Name and Address of Applicant (Include ZIP Code) Nufarm Americas, Inc. Riverdale - A Nufarm Company 1333 Burr Ridge Parkway, Suite 125A Burr Ridge, IL 60527-0866 <input type="checkbox"/> Check if this is a new address	6. Expedited Review. In accordance with FIFRA Section 3(c)(3) (b)(i), my product is similar or identical in composition and labeling to: EPA File Symbol _____ Product Name _____	

Section - II

<input type="checkbox"/> Amendment - Explain below.	<input type="checkbox"/> Final printed labels in response to Agency letter dated _____	NOTIFICATION JAN 30 2004
<input type="checkbox"/> Resubmission in response to Agency letter dated _____	<input type="checkbox"/> "Me Too" Application.	
<input checked="" type="checkbox"/> Notification - Explain below.	<input type="checkbox"/> Other - Explain below.	

Explanation: Use additional page(s) if necessary. (For section I and Section II.)
We added back pages 5 and 6 which had accidentally been omitted from our 5/7/03 submission.

This notification is consistent with the provisions of PR Notice 98-10 and EPA regulations at 40 CFR 152.46, and no other changes have been made to the labeling or the Confidential Statement of Formula of this product. I understand that it is a violation of 18 U.S.C. Sec. 1001 to willfully make any false statement to EPA. I further understand that if this notification is not consistent with the terms of PR Notice 98-10 and 40 CFR 152.46, this product may be in violation of FIFRA and I may be subject to enforcement action and penalties under sections 12 and 14 of FIFRA.

Section - III

1. Material This Product Will Be Packaged In:				2. Type of Container	
Child-Resistant Packaging <input type="checkbox"/> Yes * <input type="checkbox"/> No	Unit Packaging <input type="checkbox"/> Yes <input type="checkbox"/> No	Water Soluble Packaging <input type="checkbox"/> Yes <input type="checkbox"/> No		<input type="checkbox"/> Metal	<input type="checkbox"/> Plastic
* Certification must be submitted		If "Yes" Unit Packaging wgt. No. per container	If "Yes" Package wgt. No. per container	<input type="checkbox"/> Glass	<input type="checkbox"/> Paper
				<input type="checkbox"/> Other (Specify) _____	
3. Location of Net Contents Information <input type="checkbox"/> Label <input type="checkbox"/> Container		4. Size(s) Retail Container		5. Location of Label Directions <input type="checkbox"/> On Label <input type="checkbox"/> On Labeling accompanying product	
6. Manner in Which Label is Affixed to Product <input type="checkbox"/> Lithograph <input type="checkbox"/> Paper glued <input type="checkbox"/> Stenciled			<input type="checkbox"/> Other _____		

Section - IV

1. Contact Point (Complete items directly below for identification of individual to be contacted, if necessary, to process this application.)		
Name Russell F. Sawyer	Title Regulatory Affairs Manager	Telephone No. (Include Area Code) 708/754-3330
Certification I certify that the statements I have made on this form and all attachments thereto are true, accurate and complete. I acknowledge that any knowingly false or misleading statement may be punishable by fine or imprisonment or both under applicable law.		6. Date Application Received (Stamped)
2. Signature 	3. Title Regulatory Affairs Manager	
4. Typed Name Russell F. Sawyer	5. Date December 22, 2003	

RIVERDALE

NOTIFICATION

JAN 30 2004

TRIAMINE PREMIUM 6666

LIQUID WEED AND FEED

2/8

LIQUID LAWN CARE
READY-TO-USE

FOR USE WITH A HOSE-END SPRAYER ON GRASS AND ORNAMENTAL TURF (TURF GRASS LAWNS)

NO MIXING

TREATS (COVERS) 4,250 TO 10,000 SQ. FT. IN A MATTER OF MINUTES

Read directions for different grasses.

Gives your lawn a quick boost of important nutrients while controlling broadleaf weeds. Attach to a garden hose-end sprayer, turn on water, and spray.

A Quick and Easy Way to a Quality Lawn.

CONTAINS 2,4-D, MECOPROP, DICHLORPROP AND A X-X-X FERTILIZER

ACTIVE INGREDIENTS:

Dimethylamine Salt of 2,4-Dichlorophenoxyacetic Acid*	2.29%
Dimethylamine Salt of 2-(2-Methyl-4-Chlorophenoxy)propionic Acid**	2.30%
Dimethylamine Salt of 2-(2,4-Dichlorophenoxy)propionic Acid***	2.26%

INERT INGREDIENTS:	93.15%
TOTAL	100.00%

Isomer Specific AOAC Method, Equivalent to:

*2,4-Dichlorophenoxyacetic Acid	1.9%	0.18 lb(s)/gal.
**2-(2-Methyl-4-Chlorophenoxy)propionic Acid	1.9%	0.18 lb(s)/gal.
***2-(2,4-Dichlorophenoxy)propionic Acid	1.9%	0.18 lb(s)/gal.

GUARANTEED ANALYSIS:

Total Nitrogen (N)	X%
X% Urea Nitrogen	
Fertilizer guaranteed by (Name of fertilizer registrant)	

Riverdale and Triamine are Registered Trademarks of Riverdale - A Nufarm Company

Patent Pending

KEEP OUT OF REACH OF CHILDREN

CAUTION

SEE SIDE AND BACK PANELS FOR FIRST AID
AND ADDITIONAL PRECAUTIONARY STATEMENTS

NET CONTENTS: 1/2 GAL. (64 Fl. Oz.)

NET WEIGHT: 4.6 LBS.

EPA REG. NO. 228-216

EPA EST. NO. 228-IL-1

MANUFACTURED BY NUFARM AMERICAS INC., BURR RIDGE, ILLINOIS 60527-0866

Revised A/O 6/7/02 EPA required First Aid Update.

A/O 5/7/03 Corrected 6/7/02 First Aid, changed the Disposal Statement per PR 2001-6 via Amendment.

A/O 6/11/03 Corrected per EPA's 6/11/03 letter.

12/22/03 Resubmitted entire label. Pages 5 and 6 previously accepted on 6/7/02 had accidentally been omitted from 5/7/03 submission.

(Back Panel)

3/8

PRECAUTIONARY STATEMENTS**HAZARDS TO HUMANS AND DOMESTIC ANIMALS****CAUTION**

Harmful if absorbed through skin. Causes moderate eye irritation. Avoid contact with eyes or clothing. Wear long pants, long-sleeved shirt, socks, shoes and chemical resistant gloves when handling or applying this product. After using this product, wash nondisposable gloves thoroughly with soap and water before removing, remove clothing and launder separately before reuse, and promptly and thoroughly wash hands and exposed skin with soap and water. Remove saturated clothing as soon as possible and shower. The maximum number of broadcast applications per treatment site is 2 per year. Do not allow people (other than applicator) or pets on treatment area during application. Do not enter treatment areas until spray has dried.

FIRST AID STATEMENT

Have the product container or label with you when calling a poison control center or doctor, or going for treatment.

IF IN EYES: Hold eye open and rinse slowly and gently with water for 15 to 20 minutes. Remove contact lenses, if present, after the first 5 minutes, then continue rinsing eye. Call a poison control center or doctor for treatment advice.

IF SWALLOWED: Call a poison control center or doctor immediately for treatment advice. Have person sip a glass of water if able to swallow. Do not induce vomiting unless told to do so by a poison control center or doctor. Do not give anything by mouth to an unconscious person.

IF ON SKIN OR CLOTHING: Take off contaminated clothing. Rinse skin immediately with plenty of water for 15 to 20 minutes. Call a poison control center or doctor for treatment advice.

(OPTIONAL: In case of emergency involving this product call collect day or night, XXX-XXX-XXXX.)

ENVIRONMENTAL HAZARDS

This product is toxic to aquatic invertebrates. Drift or runoff may adversely affect aquatic invertebrates and non-target plants. Do not apply directly to water. Do not contaminate water when disposing of equipment washwaters nor pour the washwaters on the ground; spray or drain over a large area away from wells, other water sources and desirable plants. Do not apply this product through any type of irrigation system. Do not contaminate water used for irrigation or domestic purposes. If spills occur, collect the material and dispose of by following disposal instructions on this label.

DIRECTIONS FOR USE

It is a violation of Federal law to use this product in a manner inconsistent with its labeling. READ ENTIRE LABEL BEFORE USING THIS PRODUCT. USE STRICTLY IN ACCORDANCE WITH LABEL PRECAUTIONARY STATEMENTS AND DIRECTIONS.

Spray anytime during the growing season when weeds are actively growing (except as noted for S-Southern or Warm Season Grasses).

4,150 to 6,666 Sq. Ft. Coverage for (N-Northern or Cool Season Grasses) such as Blue Grass, Fescue, and Rye grasses.

8,500 to 10,000 Sq. Ft. Coverage for (S-Southern or Warm Season Grasses) Bahia, common Bermuda, St. Augustine, Centipede, Zoysia and Bent grasses. Some temporary injury may occur with these grasses. In Spring, do not apply until grass has reached full green-up. In Fall, exercise care when grass growth is going into dormancy. When

applying to Bent grass, height of grass should be 1-1/2" or more. 418

Note: Some hybrid Bermuda grasses may be sensitive to this product. Contact your local Extension Service weed control specialist.

(Optional Statement: Do not use on Floratam or other improved varieties of St. Augustine grass in Florida.)

Designed to control broadleaf weeds and give your lawn a quick boost of important nutrients.

Controls dicot weeds during their active growth period. Guaranteed not to burn your lawn when used as directed. High analysis fertilizer featuring a patented nitrogen formula.

A lawn typically will utilize 1 to 4 pounds of nitrogen per 1,000 square feet per growing season. When used as directed, this product will supplement your regular fertilizer program by providing *(No. of lbs.)* pounds of nitrogen per 1,000 square feet (optional P₂O₅ and K₂O levels) and Triamine™ to control listed weeds. Please contact your local extension office for questions regarding a regular fertilizer program.

*Based on Inert fertilizer claimed.

USE PRECAUTIONS

IMPORTANT: Do not use this product for controlling weeds in flower or vegetable beds or around shrubs or ornamental plantings. Do not spray exposed roots of desirable plants. Do not spray on Dichondra, Lippia, nor on grasses where desirable Clovers are present. Do not apply to newly seeded grasses until they have been mowed 3 times. Do not cut grass 1 to 2 days before and after application. Do not reseed or plant stolons for 3 to 4 weeks after use. If lawn needs watering, water thoroughly before application. Do not water for 48 hours after application. Watering will wash off weed killing material. Do not apply if rainfall is expected within 48 hours. (Optional statements for adjustable sprayers - Avoid fine mists. Use a lawn type sprayer with a coarse spray as wind drift is less likely.) Spray entire lawn, wetting weeds and lawn grasses. Do not exceed recommended rates because damage to turf may occur. Spray when air is calm to avoid spray drift that might injure desirable ornamental plants. Do not apply when temperature exceeds 85°F. Shake well before using.

WEEDS CONTROLLED BY TRIAMINE™ PREMIUM 6666 LIQUID WEED AND FEED

Alders, Artichoke, Aster, Austrian fieldcress, Beggarticks, Bidden, Bindweed, Bitterweed, Bitter winter cress, Black medic, Blessed thistle, Blue lettuce, Box elder, Broomweed, Buckhorn, Bull thistle, Burdock, Bur ragweed, Buttercup, Canada thistle, Carpetweed, Catnip, Chickweed, Chicory, Clover, Cockle, Cocklebur, Coffeebean, Coffeeweed, Common sowthistle, Creeping jenny, Croton, Curly indigo, Dandelion, Dock, Dogbane, Dogfennel, Elderberry, English daisy, Flea bane (daisy), Flixweed, Florida pusley, Frenchweed, Galinsoga, Goatsbeard, Goldenrod, Ground ivy, Gumweed, Hawkweed, Healall, Heartleaf drymary, Hemp, Henbit, Hoary cress, Honeysuckle, Horsetail, Indiana mallow, Ironweed, Jewelweed, Jimsonweed, Kochia, Knotweed, Lambsquarters, Locoweed, Lupines, Mallow, Marshelder, Mexicanweed, Morningglory, Musk thistle, Mustard, Nettle, Nutgrass, Orange hawkweed, Oxalis, Parsnip, Pennycress, Pennywort, Peppergrass, Pepperweed, Pigweed, Plantain, Poison hemlock, Poison ivy, Poison oak, Pokeweed, Poorjoe, Povertyweed, Prickly lettuce, Primrose, Puncture vine, Purslane, Ragweed, Red clover, Red sorrel, Rush, Russian thistle, St. Johnswort, Sheep sorrel, Shepherdspurse, Smartweed, Sneezeweed, Southern wild rose, Sowthistle, Spanishneedles, Spatterdock, Speedwell, Spurge, Spurweed, Stinkweed, Stitchwort, Sumac, Sunflower, Sweetclover, Tarweed, Thistle, Toadflax, Tumbleweed, Velvetleaf, Veronica, Vervain, Vetch, Virginia buttonweed, Virginia creeper, Wild aster, Wild carrot, Wild garlic, Wild geranium, Wild lettuce, Wild onion, Wild radish, Wild rape, Wild strawberry, Wild sweet potato, Willow, Witchweed, Woodsorrel, Wormseed, Yarrow, Yellow rocket, and (many other broadleaf weeds).

After applying this product, many broadleaf weeds will begin to show visible signs of leaf curl within a few days. Some hard-to-control broadleaf weeds may require a second (or an additional) treatment in 3 to 4 weeks.

(HOSE-END SPRAYER INSTRUCTIONS)

HOW TO APPLY: Use any hose-end sprayer that is designed to for use on lawns and makes a minimum of 15 gallons of finished spray. Such sprayers are Ortho's Orthomatic Lawn Sprayer, Ortho's and Black Leaf's Lawn Sprayers (dilution rate of 60 to 1). The following

are adjustable/dial sprayers:

5/8

<u>MANUFACTURER</u>	<u>SETTING</u>
Super K-Gro	20
Melnor #94 & #95	11
Melnor #96 & #97	13
Gilmour #362	4
Gilmour #486	12

Special Note: Some adjustable sprayers do not hold 32 oz. The above settings are based on using 64 oz. per 4,250 to 6,666 square feet on N-Northern or Cool Season grasses or 8,500 to 10,000 square feet for application on S-Southern or Warm Season grasses. The entire contents of this bottle must be used to make the proper recommended application rate.

Determine the area to be sprayed. Apply at a rate of 64 oz. (1/2 gal.) per 4,250 to 6,666 square feet on N-Northern or Cool Season grasses or 8,500 to 10,000 square feet for application on S-Southern or Warm Season grasses. Fill sprayer jar with appropriate amount of this product. Do not dilute this product with water when filling sprayer jar. The water will automatically mix with this product during spraying. Attach sprayer to garden hose while holding sprayer at waist level. Point in a direction away from face and body. Walk back and forth at a steady pace. Overlap slightly for uniform coverage.

(DISPOSABLE SPRAYER AND BOTTLE INSTRUCTIONS)

HOW TO APPLY: Connect spray nozzle to hose. Remove bottle cap and screw bottle into nozzle. While holding sprayer at waist level, point in direction away from face and body. Turn on water at the tap. Place finger over hole on right side of nozzle (or turn on/off lever to the "ON" position) and this product will mix automatically at the proper ratio. Walk back and forth at steady pace. Overlap slightly for uniform coverage.

(Left Side Panel)

COVERAGE MEASURING GUIDE

Marks on left side panel of bottle indicate square feet covered.
(Not to Scale)

<u>1666 Sq. Ft.</u>	<u>2500 Sq. Ft.</u>	<u>1063 Sq. Ft.</u>
<u>3333 Sq. Ft.</u>	<u>5000 Sq. Ft.</u>	<u>2125 Sq. Ft.</u>
<u>5000 Sq. Ft.</u>	<u>7500 Sq. Ft.</u>	<u>3188 Sq. Ft.</u>
<u>6666 Sq. Ft.</u>	<u>10000 Sq. Ft.</u>	<u>4250 Sq. Ft.</u>
Cool Season (N)	Warm Season (S)	(Optional)

(Right Side Panel)

STORAGE AND DISPOSAL

STORAGE: Keep from freezing (For 25-1-2 fertilizer Do Not Store above 95°F) To be stored in original container (when applicable: with child-resistant cap) and placed in a locked area inaccessible to children. Do not store near feed or foodstuff.

DISPOSAL: If empty - Do not reuse this container except as specified in directions to prepare refill. Place in trash or offer for recycling if available. If partly filled - If product cannot be used as directed, or offered to others for their use, call your local solid waste agency or 1-800-CLEANUP for disposal instructions. Never place unused product down any indoor (including toilet) or outdoor (including sewer) drain.

NOTICE: Buyer assumes all responsibility for safety and use not in strict accordance with directions and instructions for use. (Optional statement - If these terms are not acceptable, return at once unopened.) (RV 061103A)

The following will not be part of the actual label copy.

Note: Guaranteed (fertilizer) analysis and weight will vary among various commercial fertilizer manufacturers.

618

(Additional copy for refill size)

For refill only: Use this bottle to refill the quart hose-end sprayer of Riverdale Premium 6666 Liquid Weed and Feed. Follow directions for use on hose-end sprayer bottle. (Optional statements - and directions pamphlet enclosed with 1 quart bottle).
 (- save when you buy this double coverage refill!)

(GWF SPRAYER INFORMATION)

(Optional statements - For Residential Use Only)
 - For more information about Seller's Products call 1-800-XXX-XXXX
 Nozzle "A" Instructions

HOW TO APPLY:

- No Mix, No Measure
- Make sure ON/OFF valve is in OFF position.
- Shake well before applying.
- Connect spray nozzle to hose.
- Turn on the water at the tap.
- When ready to treat, point in direction away from face and body and pull the tab toward the hose end connection. Turn the ON/OFF valve to the ON position. The water mixes automatically with this product at the proper ratio.
- Walk and spray at a steady pace. Marks on the side of bottle indicate the number of square feet covered in 1,000's.

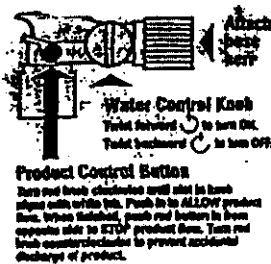
OVS SPRAYER INSTRUCTIONS

-Overlap treated areas by at least one foot to insure proper coverage.
 -Apply beginning in spring, after your second mowing, through the fall.
 -Regular lawn watering is necessary to maintain a quality lawn. During periods of drought or hot, dry weather, do not use this product until the rains occur or the lawn is watered.

PRECAUTIONS

-Apply on a calm day to avoid spray drift to non-target plants.
 -Wait until you mow three or four times before you use this product on new grass.
 -Avoid applications near shrubs, flowers, fruit or vegetable plants as plant injury may occur.

DIRECTIONS FOR USE



Begin spraying at a point farthest from the faucet, holding the product in front of you at waist height. Use a side-to-side swinging motion to cover an 8- to 10-foot swath. Overlap swaths by at least one foot to ensure even coverage.

Easy to use

1. Make sure the ON/OFF Water Control Knob is in the OFF position.
2. Shake well before applying.
3. Connect spray nozzle to hose with convenient swivel end.
4. Turn the red knob on the Product Control Button to align with the white tab, then push the button in all the way. Avoid squeezing bottle after this, as contents may spray through nozzle opening.
5. Turn water on at faucet.
6. When ready to spray, point nozzle toward lawn, then turn Water Control Knob to ON position.
7. When finished, push red Product Control Button to OFF position to stop product flow. Turn Water Control Knob to OFF and turn off faucet. Turn Water Control Knob to ON to release water pressure, then turn OFF again.
8. To prevent accidental discharge when not in use, turn red knob so it is not aligned with white tab and cannot be pushed in. Store out of reach of children.

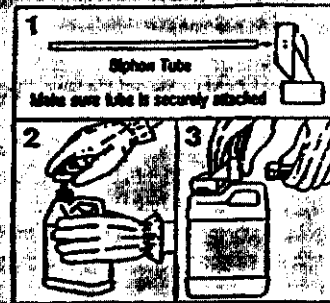
**Questions?
 Call Scott's
 toll-free
 Consumer
 Hotline:
 1-800-543-TURF**

**Seller's Policy
 No Quibble Guarantee**

If for any reason you are not satisfied with results after using any seller's product, you are entitled to get your money back. Simply send us evidence of purchase and we will mail you a refund check promptly.

UPC Bar Code

**Daxol Industries
 Sprayer Instructions**



ASSEMBLY INSTRUCTIONS

1. Attach siphonage tube to hose-end sprayer attachment.
2. Remove cap from bottle and insert sprayer attachment. Securely tighten sprayer attachment on bottle.
3. Screw hose into hose-end sprayer attachment.



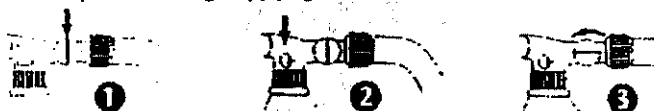
SPRAYING INSTRUCTIONS

1. Turn on water. TO START FLOW OF PRODUCT: Place finger over hole on top right side of sprayer attachment. Hold about 3 feet above area to be treated moving at a steady pace to ensure consistent coverage.
2. TO STOP FLOW OF PRODUCT: Remove finger from hose to break siphon action. NOTE: To ensure adequate coverage, use moderate to high water pressure.

Schultz Company Sprayer Instructions

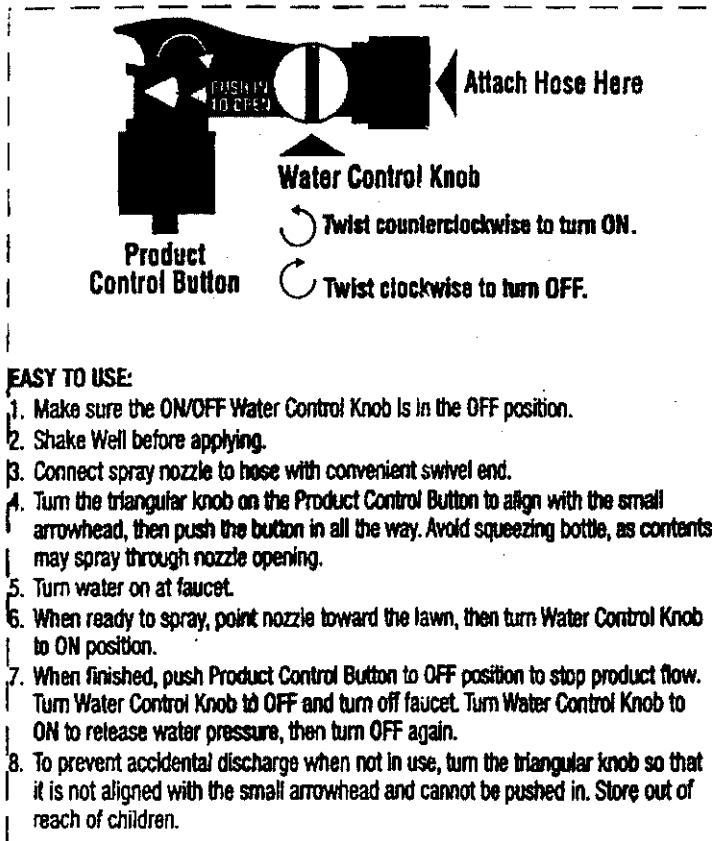
READY TO SPRAY — NO MIXING REQUIRED!

- Shake container vigorously for one minute.
 Attach garden hose to sprayer.
1. Turn larger water control valve to OFF. Turn on faucet. Work backward from the farthest area you will be feeding to avoid walking over areas already sprayed.
 2. Turn small white button to align flat side with T-tab, and push button in completely.
 3. Position sprayer toward area to treat, and turn water control valve to horizontal position to begin applying.



IMPORTANT: When finished, return white button to closed position. Turn water control valve to OFF and turn off faucet. Turn water control valve to horizontal position again to release water pressure. Store remaining product with button & valve turned off.

Value Garden's Sprayer Instructions

**EASY TO USE:**

1. Make sure the ON/OFF Water Control Knob is in the OFF position.
2. Shake Well before applying.
3. Connect spray nozzle to hose with convenient swivel end.
4. Turn the triangular knob on the Product Control Button to align with the small arrowhead, then push the button in all the way. Avoid squeezing bottle, as contents may spray through nozzle opening.
5. Turn water on at faucet.
6. When ready to spray, point nozzle toward the lawn, then turn Water Control Knob to ON position.
7. When finished, push Product Control Button to OFF position to stop product flow. Turn Water Control Knob to OFF and turn off faucet. Turn Water Control Knob to ON to release water pressure, then turn OFF again.
8. To prevent accidental discharge when not in use, turn the triangular knob so that it is not aligned with the small arrowhead and cannot be pushed in. Store out of reach of children.

UPS - Overnight
December 22, 2003

Document Processing Desk (NOTIF)
Office of Pesticide Programs (7504C)
U.S. Environmental Protection Agency
Crystal Mall Bldg. # 2
1921 Jefferson Davis Highway
Arlington, VA 22202

Dear Sir/Madam:

Subject: Riverdale Triamine Premium 6666 Liquid Weed And Feed
EPA Registration No. 228-216
Application for Pesticide: Other
OPP Identifier No. 292590

We wish to notify the Agency we are resubmitting the entire label. Pages 5 and 6 previously accepted on 6/7/03 had accidentally been omitted from the 5/7/03 submission.

We apologize for any inconvenience this may have caused.

Thank you for your continuing assistance.

Sincerely yours,

RIVERDALE - A NUFARM COMPANY



By Russell F. Sawyer
Regulatory Affairs Manager

RFS:jb

Enclosures