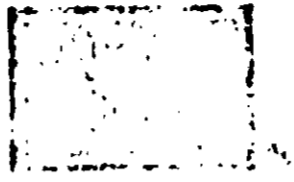


**ACCEPTED**  
  
JAN 28 1972  
UNDER THE FEDERAL INSECTICIDE  
FUNGICIDE AND RODENTICIDE ACT  
FOR ECONOMIC REGISTRATION REGISTERED  
UNDER NO. 218-605 SUBJECT  
TO ATTACHED COMMENTS.

NET WEIGHT



OUNCES

**KIPONE®**  
ANT and ROACH PASTE

For Control of Certain Ants and Roaches

U.S. Pat. Reissue 24,749

USDA Reg. No. 218-605

ACTIVE INGREDIENT:  
Decachlorooctahydro-1,3,4-metheno-2H-  
cyclobuta[cd] pentalen-2-one ..... 0.125%  
INERT INGREDIENTS: ..... 99.875%

**WARNING: Keep out of reach of children.**

- Hazardous if swallowed or absorbed through the skin.
- Do Not get on skin, in eyes, or on clothing.
- Wash with soap and water after using and before eating or smoking.
- Wash contaminated clothing before re-use.
- Do Not contaminate feed or foodstuffs.
- Keep out of reach of children and domestic animals.
- Do Not apply in areas accessible to children or domestic animals.

**DO NOT RE-USE CONTAINER, DESTROY WHEN EMPTY.**

**DIRECTIONS**

For Ants In Houses: Place small amounts of bait along walks, on ant nests near houses, and in cracks and crevices on window- and doorsills where ants are entering. Then, also, place small particles of bait on bits of cardboard set along baseboards, shelves, sills, or wherever ants may appear.

For Ants On Lawns And In Flower Gardens: Place 1/4-inch pieces of bait on each ant hill late in the afternoon. Do not cut or roll lawn until after ants have removed bait. Repeat application until ants disappear.

**WARNING: Keep out of reach of children.**

Hazardous if swallowed or absorbed through the skin.

Do Not get on skin, in eyes, or on clothing.

Wash with soap and water after using and before eating or smoking.

Wash contaminated clothing before re-use.

Do Not contaminate feed or foodstuffs.

Keep out of reach of children and domestic animals.

Do Not apply in areas accessible to children or domestic animals.

**DO NOT RE-USE CONTAINER, DESTROY WHEN EMPTY.**

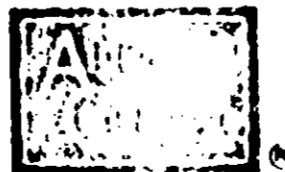
**DIRECTIONS**

For Ants In Houses: Place small amounts of bait along walks, on ant nests near houses, and in cracks and crevices on window- and doorsills where ants are entering. Then, also, place small particles of bait on bits of cardboard set along baseboards, shelves, sills, or wherever ants may appear.

For Ants On Lawns And In Flower Gardens: Place 1/4-inch pieces of bait on each ant hill late in the afternoon. Do not cut or roll lawn until after ants have removed bait. Repeat application until ants disappear.

For Roaches: Place 1/2-inch baits on pieces of paper where pests appear and near suspected hiding places. Renew baits as needed.

Follow directions carefully. Timing and method of application, weather and crop conditions, mixtures with other chemicals not specifically recommended, and other influencing factors in the use of this product are beyond the control of the seller. Buyer assumes all risks of use, storage or handling of this material not in strict accordance with directions given herewith.



**ALLIED CHEMICAL CORPORATION**  
AGRICULTURAL DIVISION  
MORRISTOWN, NEW JERSEY, U.S.A.

Made in U.S.A.

9414  
A1705A

Printed in U.S.A.