

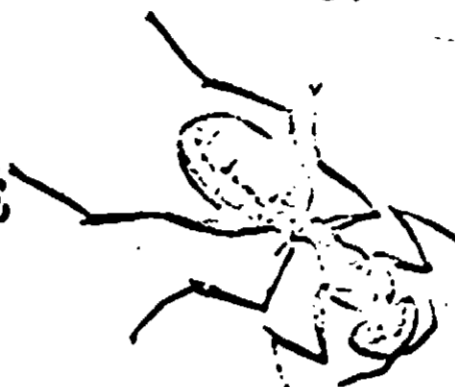
KEPONE®

ANT PASTE

Trap

USDA Reg. No. 218-537

for control of sweet and grease-eating ants,
and Imported Fire Ants
U.S. Pat. No. 2,749



ACTIVE INGREDIENT:
Decachlorooctahydro-1,3,4-metheno-2H-
cyclobuta[cd] pentalen-2-one 0.125%
INERT INGREDIENTS 99.875%

DIRECTIONS

The following general directions are supplied by us gratuitously and are believed to be reliable but are in no way guaranteed.

PUNCH ALL SIDE HOLES

FOR ANTS INSIDE HOME

Place traps outside close to foundation about 10 to 15 feet apart, or on foundation sills in basement, window sills, or inside where ants are entering. Ants carry food to nest, usually killing entire colony.

FOR LAWN AND GARDEN

Place traps along ant trails about 10 to 20 feet apart.

Replace with new traps at least every 30 days.

For Imported Fire Ants in the South

Place individual trap by each Fire Ant mound. One trap should be sufficient for each infested mound. Replace with new traps as needed.

WARNING

Keep out of reach of children

Hazardous if swallowed or absorbed through the skin.

Do Not get on skin, in eyes, or on clothing.

Wash with soap and water after using.

Do Not contaminate feed or foodstuffs.

Keep out of reach of children and domestic animals.

NOTICE: This product is licensed for use only in accordance with the instructions on the label and not for the formulation of other pesticidal compositions.

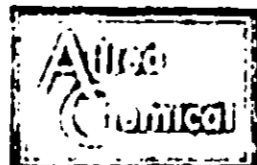
Seller makes no warranty of any kind, express or implied, concerning the results obtained by the use of this material. Buyer assumes all risk of use or handling whether or not in accordance with any suggestions, recommendations or directions of seller.

ACCEPTED

JUL 6 1967

UNDER THE FEDERAL INSECTICIDE
FUNGICIDE AND RODENTICIDE ACT
FOR ECONOMIC PESTICIDE REGISTRATION
FILED UNDER NO. 218-537 SUBJECT
ATTACHED COMMENTS.

MADE IN U. S. A.



Serving Agriculture from Coast to Coast

NITROGEN DIVISION
40 RECTOR STREET, NEW YORK, N. Y., U. S. A.

PRINTED IN U. S. A.