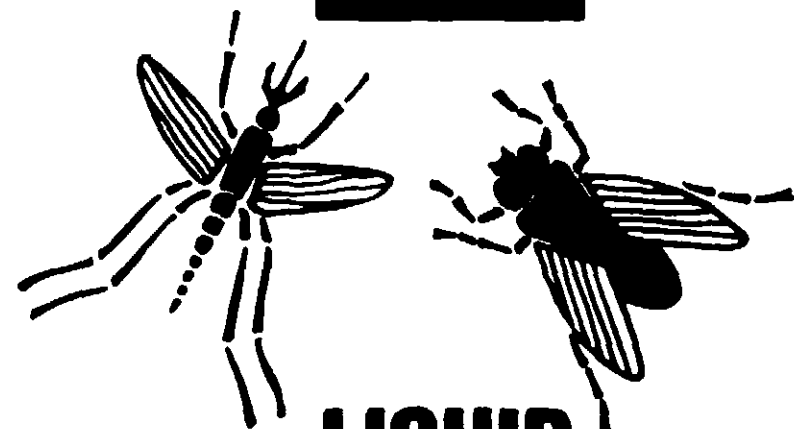


CONTINUOUS  
TONE SHELL EMBLEM



LIQUID  
**FLYING  
INSECT  
KILLER**

SOLID RED

*Fast Knockdown—Fast Kill*

**CAUTION: KEEP OUT OF REACH OF CHILDREN**

See directions and cautions on back

**NET 16 FL. OZ. (1 PT.)**

**DIRECTIONS FOR USE**

For indoor use in homes, restaurants and food processing plants. Place a quantity of undiluted Shell Liquid Flying Insect Killer into a sprayer which will produce a fine mist. Use according to the following directions. Do not remain in enclosed treated areas. Ventilate enclosed areas after spraying.

**To Kill Flies, Mosquitoes and Gnats:** Close room and apply spray mist vigorously in all parts of room at the rate of one ounce/1000 ft.<sup>3</sup> Spray directly on as many insects as possible. Leave room closed for at least ten minutes. Repeat as needed. Sweep up and destroy fallen insects.

**To Kill Fleas (Infesting Premises):** Remove and destroy animal's bedding and spray sleeping quarters freely, forcing the spray into all cracks and about the room. Repeat as often as necessary.

**To Kill Roaches and Waterbugs:** Apply in all cracks and crevices in woodwork, underneath sinks, dark places behind pipes, and in all places where roaches and waterbugs infest, contacting as many insects as possible. Repeat the operation as often as necessary.

**To Kill Clothes Moths, Carpet Beetles:** Spray all articles to be protected, giving particular attention to folds and seams. Interior surfaces of storage containers such as closets, chests and trunks should be regularly sprayed. The treatment should be repeated every thirty days unless the articles are stored in a mothtight container.

**CAUTION**

KEEP OUT OF REACH OF CHILDREN. Harmful if swallowed. Do not apply directly to food. Cover or remove all food and food processing equipment during application. Do not apply while food preparation is underway. After spraying in bakeries and other food processing plants, wash with potable water all equipment, benches, shelving, etc. where exposed food will be handled. In case washing is impractical, do not allow food to come in contact with treated surfaces for at least 48 hours. Remove pets, birds and cover fish bowls during spray application. Keep container closed.

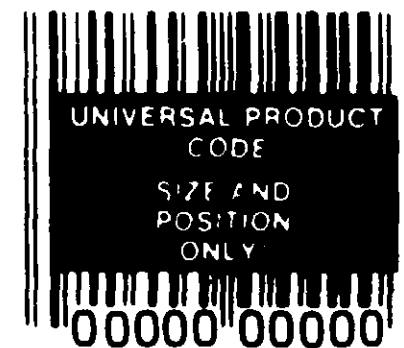
**CAUTION:** Do not use or store near heat or flame. Do not reuse container. Destroy when empty.

Use this product only as specified on this label. For indoor use only.

ACTIVE INGREDIENTS: Pyrethrin, 0.075%; Technical piperoxyl butoxide, 0.150%; N-ethyl bicyclohexane dicarbamate, 0.250%; Petroleum distillate, 99.525%. TOTAL: 100.000%  
\*Equivalent to 0.150% (pyrethrin) (p-ppropyl-pyrene) ester and 0.075% related compounds

EPA REG. NO. 201-300  
EPA EST. 100-324 8-75

NET CONTENTS 1 PINT  
(.473 LITER)

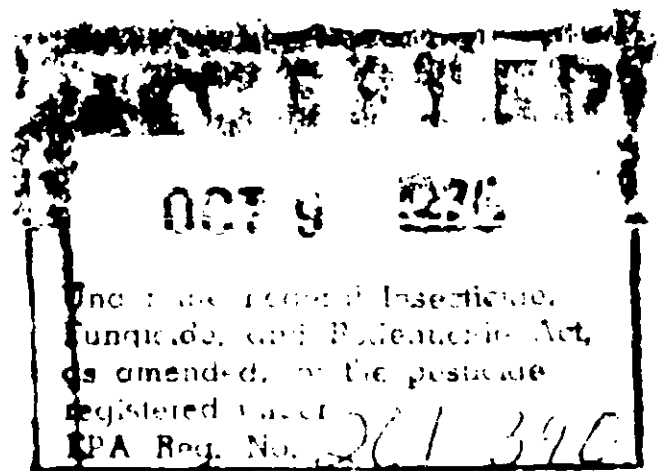


SHELL CHEMICAL COMPANY, A Division of Shell Oil Company, SAN RAMON, CALIFORNIA 94503

LABEL SHOWN IS ACTUAL SIZE

GREY AREA IS SOLID BLUE

ALL COPY UNLESS OTHERWISE INDICATED IS SOLID BLACK



ACCEPTED WITH COMMENTS

# LIQUID FLYING INSECT KILLER

SOLID RED

*Fast Knockdown—Fast Kill*

**CAUTION: KEEP OUT OF REACH OF CHILDREN**

See directions and cautions on back

**NET 16 FL. OZ. (1 PT.)**

work, underneath sinks, dark places behind pipes, and in all places where roaches and waterbugs infest, contacting as many insects as possible. Repeat the operation as often as necessary.

**To Kill Clothes Moths, Carpet Beetles:** Spray all articles to be protected, giving particular attention to folds and seams. Interior surfaces of storage containers such as closets, chests and trunks should be regularly sprayed. The treatment should be repeated every thirty days unless the articles are stored in a mothtight container.

## CAUTION

KEEP OUT OF REACH OF CHILDREN. Harmful if swallowed. Do not apply directly to food. Cover or remove all food and food processing equipment during application. Do not apply while food preparation is underway. After spraying in bakeries and other food processing plants, wash with potable water all equipment, benches, shelving, etc. where exposed food will be handled. In case washing is impractical, do not allow food to come in contact with treated surfaces for at least 48 hours. Remove pets, birds and cover fish bowls during spray application. Keep container closed.

**CAUTION:** Do not use or store near heat or flame. Do not reuse container. Destroy when empty.

Use this product only as specified on this label. For indoor use only.

**ACTIVE INGREDIENTS:** Pyrethrins, 0.075%; \*Technical piperonyl butoxide, 0.150%; \*\*N-octyl bicycloheptene dicarboximide, 0.250%; Petroleum distillates, 99.525%. **TOTAL: 100.000%**

\*Equivalent to 0.120% (butylcarbityl) (6-propyl-piperonyl) ether and 0.030% related compounds

\*\*MCK 204 Synthesol

EPA REG. NO. 201-390  
EPA EST. ACD-324 8-75

**NET CONTENTS 1 PINT  
(.473 LITER)**



SHELL CHEMICAL COMPANY, A Division of Shell Oil Company

LABEL SHOWN IS ACTUAL SIZE  
GREY AREA IS SOLID BLACK  
ALL COPY UNLESS OTHERWISE INDICATED IS SOLID BLACK