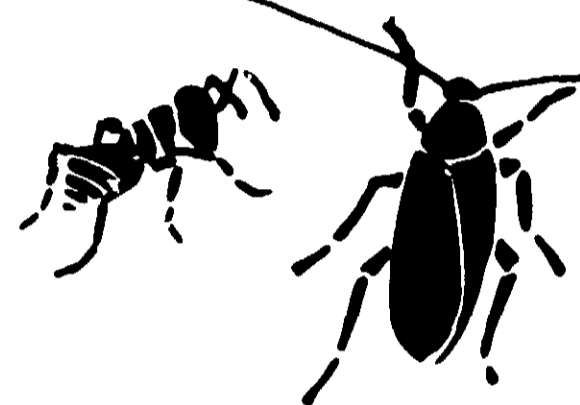


CONTINUOUS  
TONE SHELL EMBLEM



ACCEPTED  
OCT 10 1975  
Under the Federal Insecticide,  
Fungicide, and Rodenticide Act,  
as amended, for the pesticide  
registered under  
EPA Reg. No.

LIQUID ——— SOLID RED

# ANT & ROACH KILLER

Ready To Use

**CAUTION: KEEP OUT OF REACH OF CHILDREN.**

See directions and cautions on back

**NET 16 FL. OZ. (1 PT.)**

- KILLS FAST • KILLS FOR WEEKS
- KILLS RESISTANT ROACHES

Shell Liquid Ant and Roach Killer is a ready-to-use formulation for control of hard-to-kill insects in the home. It quickly kills exposed insects on contact and its penetrating vapors reach in to kill hidden bugs. Its long lasting killing power will give weeks of protection after the spray dries.

**DIRECTIONS FOR USE:** Remove cover. Line up arrow on top of pump with arrow on side. Hold container upright about 12 inches away from the surface to be sprayed. Point nozzle away from body. Spray until wet. Turn arrows off alignment and replace cover. Avoid excessive wetting of asphalt tile, rubber, and plastic materials.

KILLS:	HOLD SPRAYER 12 INCHES FROM ALL SURFACES SPRAYED
Roaches, Ants, Spiders, Waterbugs, Silverfish, Crickets, Earwigs, Fleas, Ticks, Centipedes, Clover Mites, Sowbugs, Scorpions	<p><b>INDOORS:</b> Make "spot" treatment to areas where these pests are seen or suspected of being present such as cracks and crevices along baseboards; behind and beneath sinks, refrigerators, stoves and cabinets; around utility pipes and dark corners of closets. For fleas, remove pet's bedding and destroy. Spray sleeping quarters, floor covering in area around pet's bed. Do not spray directly on animals. Repeat as necessary.</p> <p><b>OUTDOORS:</b> To prevent insect entry to homes, garages, and other buildings, thoroughly spray areas around door sills, steps, window frames, and foundations. Repeat as necessary.</p>

**NOT A SPACE SPRAY—APPLY ONLY AS A SURFACE SPRAY**

**CAUTION:** Harmful if swallowed, inhaled, or absorbed through the skin. If swallowed, call a physician immediately. Get immediate medical attention. Avoid contact with skin and breathing of spray mist. Do not apply to humans. Avoid contact with skin, eyes, or clothing. Wash hands thoroughly with soap and water after use, and before eating or smoking. Do not smoke while using. **KEEP OUT OF REACH OF CHILDREN:** Do not allow children in treated areas until dry.

**NOTE TO PHYSICIAN:** Atropine is antidotal.

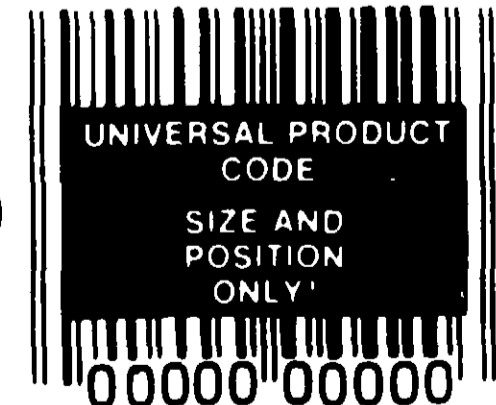
Do not use in edible product areas of food processing plants, restaurants, or other areas where food is commercially prepared or processed. Do not use in serving areas while food is exposed. Provide adequate ventilation of area being treated. Do not apply to pets or contaminate feed, foodstuffs, dishes, or utensils.

Remove pets and cover fish tanks before spraying room. Do not allow pets on treated areas until dry.

**CAUTION:** Do not use or store near heat or open flame. Do not reuse containers. Destroy when empty.

**ACTIVE INGREDIENTS:** 2,2-Dichlorovinyl dimethyl phosphate, 0.466%; Related compounds, 0.240%; Chlorpyrifos (0,0-dimethyl 0-(3,3,3-trifluoro-2-propyl) phosphorothioate), 0.230%; Petroleum distillates, 98.074%.  
**NET WEIGHTS:** 0.376% TOTAL, 100.000%  
\*Equivalent to 0.300% VAPORON® insecticide.  
EPA REG. NO. 201-306  
EPA EST. ACD-327 9-75

**NET CONTENTS 1 PINT  
(.473 LITER)**



SHELL CHEMICAL COMPANY, A Division of Shell Oil Company, SAN RAMON, California 94583

GREY AREA IS SOLID RED  
LABEL SHOWN IS ACTUAL SIZE

ALL COPY UNLESS OTHERWISE INDICATED IS SOLID BLACK

# UID IT & ACH LER

SOLID RED

To Use

OF REACH OF CHILDREN.

and cautions on back

L. OZ. (1 PT.)

pedes, Clover  
Mites, Sowbugs,  
Scorpions

directly on animals. Repeat as necessary.

**OUTDOORS:** To prevent insect entry to homes, garages, and other buildings, thoroughly spray areas around door sills, steps, window frames, and foundations. Repeat as necessary.

### NOT A SPACE SPRAY—APPLY ONLY AS A SURFACE SPRAY

**CAUTION:** Harmful if swallowed, inhaled, or absorbed through the skin. If swallowed, call a physician immediately. Get immediate medical attention. Avoid contact with skin and breathing of spray mist. Do not apply to humans. Avoid contact with skin, eyes, or clothing. Wash hands thoroughly with soap and water after use, and before eating or smoking. Do not smoke while using. **KEEP OUT OF REACH OF CHILDREN:** Do not allow children in treated areas until dry.

**NOTE TO PHYSICIAN:** Atropine is antidotal.

Do not use in edible product areas of food processing plants, restaurants, or other areas where food is commercially prepared or processed. Do not use in serving areas while food is exposed. Provide adequate ventilation of area being treated. Do not apply to pets or contaminate feed, foodstuffs, dishes, or utensils.

Remove pets and cover fish tanks before spraying room. Do not allow pets on treated areas until dry.

**CAUTION:** Do not use or store near heat or open flame. Do not reuse containers. Destroy when empty.

**ACTIVE INGREDIENTS:** 2,2-Dichlorovinyl dimethyl phosphate, 0.460%\*; Related compounds, 0.040%\*; Chlorpyrifos (0,0-diethyl 0-(3,5,6-trichloro-2-pyridyl) phosphorothioate), 0.250%; Petroleum distillates, 98.874%.

**INERT INGREDIENTS:** 0.376% TOTAL: 100.000%  
\*Equivalent to 0.500% VAPONA® Insecticide.

EPA REG. NO. 201-386  
EPA EST.

ACD-327 9-75

**NET CONTENTS 1 PINT  
(.473 LITER)**



SHELL CHEMICAL COMPANY, A Division of Shell Oil

GREY AREA IS SOLID RED

LABEL SHOWN IS ACTUAL SIZE

ALL COPY UNLESS OTHERWISE INDICATED IS SOLID BLACK