

SOLID RED  
 CENTER OF SHELL EMBLEM IS SOLID YELLOW

SOLID YELLOW

SOLID BLUE

CHILD PROTECTOR-TOP



# PROFESSIONAL FLYING INSECT KILLER



FAST KILLING FORMULA

CAUTION: KEEP OUT OF REACH OF CHILDREN  
 SEE DIRECTIONS AND CAUTIONS ON BACK

NET WT. 15 OZ. (425 GRAMS)

REGISTERED TRADEMARK

CHILD PROTECTOR-TOP

One Second Of Direct Spray From  
 SHELL PROFESSIONAL  
 FLYING INSECT KILLER  
 IS ALL IT TAKES TO  
 KILL FLIES AND MOSQUITOES

Contains a combination of active ingredients which provide fast knockdown and killing power for control of flying insects in the home  
 DIRECTIONS: SHAKE WELL BEFORE USING. To spray, hold can upright, insert finger into large opening in the protrusion on the side of the top. Point finger away from body and push button down.

KILLS	HOLD CAN 3 FEET FROM WALLS, FABRICS AND FURNITURE WHEN SPRAYING
Flies, mosquitoes, gnats, flying moths and small flying wasps	Direct spray at insects hitting as many as possible. To clear a room of insects, close doors and windows and spray up into air with a sweeping motion until the room is filled with mist. Leave the room and keep closed for 15 minutes. Ventilate room thoroughly after treatment. Sweep up and destroy fallen insects. Repeat as necessary. For Wasps: Spray nests during the evening when wasps are inactive.

CAUTION: KEEP OUT OF REACH OF CHILDREN. Harmful if swallowed. Do not spray food or food products. Remove pets, birds and cover aquariums before spraying. Do not use on edible crops. Do not spray plastics or asphalt tile. Do not remain in treated areas. Ventilate the area after treatment is completed.

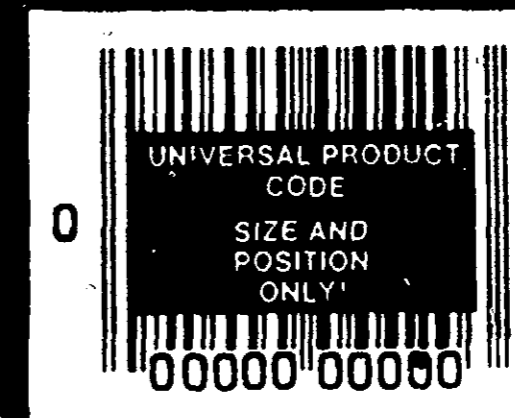
Apply this product only as specified on this label.

WARNING: FLAMMABLE! DO NOT USE NEAR FIRE, SPARKS OR FLAME. Contents under pressure. Do not puncture, incinerate or store can anywhere that temperatures will exceed 130 F as it may burst.

ACTIVE INGREDIENTS: 5-Benzyl 3-furyl methyl 2,2-dimethyl 3:12 methyl propenyl cyclopropane carboxylate, 0.200%; Related compounds, 0.028%; d-trans Allethrin, allyl homolog of Cinerin I, 0.400%; Related compounds 0.030%; Aromatic petroleum hydrocarbons, 0.273%; Petroleum distillate, 6.500%.

INERT INGREDIENTS: 92.569% TOTAL: 100.000%

U.S. Trans isomer ratio: Max 10% cis and min 90% trans  
 U.S. Patent No. 3,465,007



SHELL CHEMICAL COMPANY, A Division of Shell Oil Company, SAN RAMON, CALIFORNIA 94583

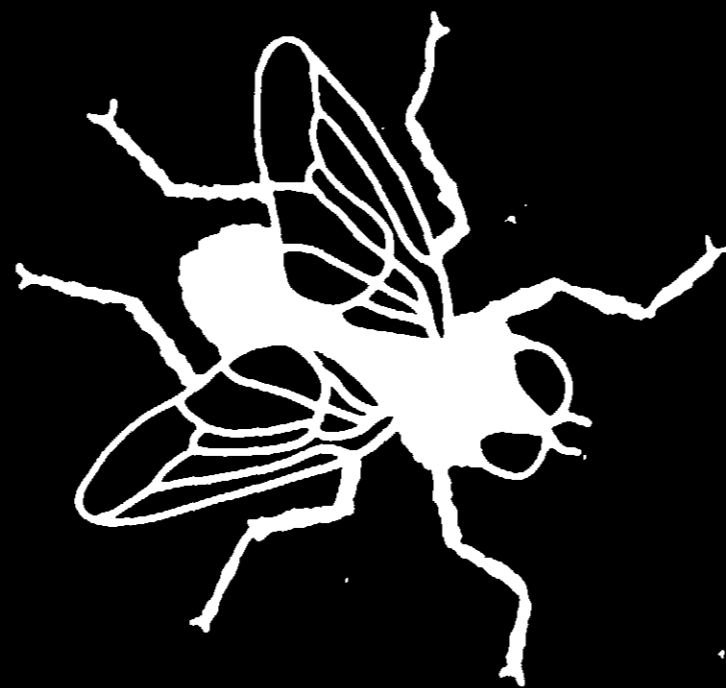
ACCEPTED  
 OCT 23 1975  
 Under the Federal Insecticide, Fungicide, and Rodenticide Act, this material, for the pesticide registered under EPA Reg. No. 201-383

Comment  
 201-383

ACCEPTED WITH COMMENTS

LABEL SHOWN IS ACTUAL SIZE  
 ALL COPY UNLESS OTHERWISE INDICATED IS SOLID WHITE

# PROFESSIONAL FLYING INSECT KILLER



**FAST KILLING FORMULA**

**CAUTION: KEEP OUT OF REACH OF CHILDREN.**  
SEE DIRECTIONS AND CAUTIONS ON BACK.

**NET WT. 15 OZ. (425 GRAMS)**

THE SHELL TRADEMARK

Contains a combination of active ingredients which provide fast knockdown and killing power for control of flying insects in the home.  
**DIRECTIONS: SHAKE WELL BEFORE USING.** To spray, hold can upright, insert finger into large opening in the protrusion on the side of the top. Point finger away from body and push button down.

KILLS	HOLD CAN 3 FEET FROM WALLS, FABRICS AND FURNITURE WHEN SPRAYING
Flies, mosquitoes, gnats, flying moths and small flying wasps.	<p>Direct spray at insects hitting as many as possible.</p> <p>To clear a room of insects: Close doors and windows and spray up into air with a sweeping motion until the room is filled with mist. Leave the room and keep closed for 15 minutes. Ventilate room thoroughly after treatment. Sweep up and destroy fallen insects. Repeat as necessary.</p> <p>For Wasps: Spray nests during the evening when wasps are inactive.</p>

**CAUTION: KEEP OUT OF REACH OF CHILDREN.** Harmful if swallowed. Do not spray food or food products. Remove pets, birds and cover aquariums before spraying. Do not use on edible crops. Do not spray plastics or asphalt tile. Do not remain in treated areas. Ventilate the area after treatment is completed.

Apply this product only as specified on this label.

**WARNING! FLAMMABLE! DO NOT USE NEAR FIRE, SPARKS OR FLAME.** Contents under pressure. Do not puncture, incinerate or store can anywhere that temperatures will exceed 130°F, as it may burst.

**ACTIVE INGREDIENTS:** ... (5-Benzyl-3-furylmethyl 2,2-dimethyl-3-(2-methyl-propenyl)cyclohexane-carboxylate, 0.200%; Related compounds, 0.020%; 4-trans Allethrin (allyl homolog of Cinerin I) 0.400%; Related compounds, 0.030%; Aromatic petroleum hydrocarbons, 0.273%; Petroleum distillate, 6.500%.

**INERT INGREDIENTS: 92.560% TOTAL: 100.000%**

\*Cis/Trans isomers ratio: Max. 30% (±) cis and min. 70% (±) trans.

\*\*U.S. Patent No. 3,465,007.



EPA REG. NO. 201083  
EPA EST.

ACD-325 0-75

SHELL CHEMICAL COMPANY, A Division of Shell Oil Company, SAN RAMON, CALIFORNIA 94583