

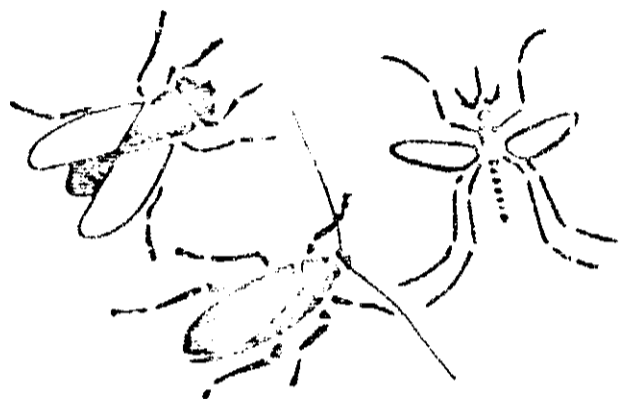
[201-373]

207-313

CH. 207-313



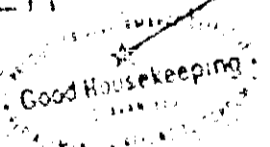
FULL COLOR
CONTINUOUS
TONE ART



SOLID RED

HOUSE & GARDEN

INSECT KILLER

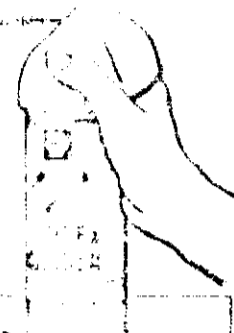


Fast Killing Formula

CAUTION: KEEP OUT OF REACH OF CHILDREN

NET WT. 10 1/2 OZ. (1 LB. 1/4 OZ.)

NO CHILD UNDER 51
MONTHS OLD WAS ABLE
TO OPERATE THE VALVE
FOLLOWING A STANDARD PROTOCOL TEST.



DIRECTIONS: SHAKE WELL BEFORE USING. To spray hold can upright. Insert finger in to large opening in the projection on the side of the top. Four finger, or away from body and push button down.

KILLS:	HOLD CAN 2 FEET FROM ALL OBJECTS BEING SPRAYED.
INDOORS: Houseflies, Mosquitoes, Gnats and Wasps	Close doors and windows and spray up and down sweeping motion to kill from wall to wall. Leave room and keep closed for 15 minutes. Ventilate room after treatment is completed.
INDOORS: Flies, Beetles, and spiders.	Thoroughly spray all hiding places such as cracks, crevices, baseboards and behind furniture and large appliances, ceiling, around pipes, sinks, and cupboards. Spray into blind areas around door sills and window frames. Hit as many insects as possible. Repeat treatment as needed.
OUTDOORS Aphids, Fleas, Lice, Termites, Beetles, Leafhoppers, Flies, Cicadas and other bugs.	Spray shrubs, lawns, grassy areas, open porches, and patios with a slow sweeping motion, while moving away from the area. To control pests on ornamentals and flowering plants, spray in misty fog so that spray drifts over plants covering upper and lower surfaces of foliage until slightly moist. Use with caution on the tender foliage of Jacaranda, Juniper, Roses, Forsythia, Quince, Amelanchier and Camellias to avoid leaf or flower fall. Hold can 12 to 16 inches away from these plants. Do not spray plants which temperature exceeds 90° F. Repeat as necessary.

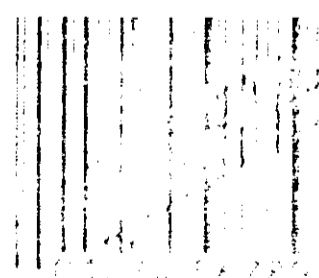
Spray outdoor areas when the wind is light to reduce the possibility of blowing insects into eyes, nose, ears, mouth, or other sensitive areas. Spray trees and grill area, and around perimeter of lawn. Do not use in food preparation area.

CAUTION: Keep out of reach of children, especially if swallowed. Do not spray face or head. Do not spray pet or animal's face. Remove pet, birds and cover food preparation areas before using. Do not drink in the treated area. Ventilate the area after treatment is completed.

WARNING: Contents under pressure. Do not use or store near heat or open flame. Do not puncture. Do not use for other purposes. Do not use if safety cause burning. Avoid contact with skin, eyes, nose and throat.

ACTIVE INGREDIENTS: D-Phenothrin 1.5%, Pyrethrin 0.5%, Permethrin 0.5%, P-menthane-3,8-diol 0.5%, piperonyl butoxide 4.0%

INERT INGREDIENTS: 97.5%
EPA REG. NO. 201-373
EPA EST. NO. 1001
SHELL CHEMICAL COMPANY, A Division of Shell Oil Company, SAN RAMON, CALIFORNIA 94583



SHELL CHEMICAL COMPANY, A Division of Shell Oil Company, SAN RAMON, CALIFORNIA 94583



ALL OTHER INDICES, OTHERWISE INDICATED, IN THIS LABEL

LABEL DIMENSIONS ACTUAL SIZE

GREY AREA IS SOLID YELLOW