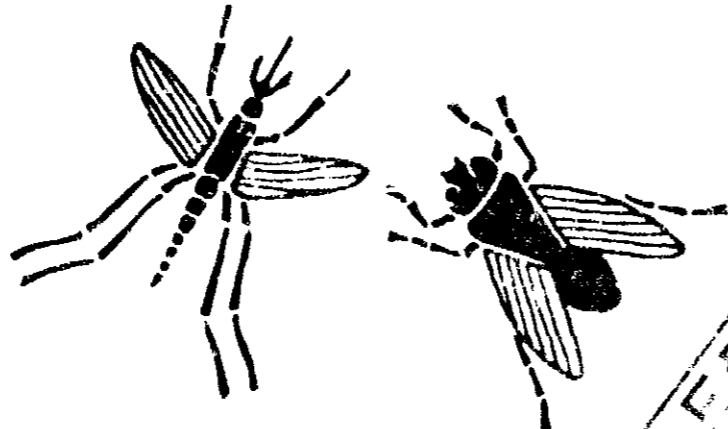


YELLOW-RED-BLUE-BLACK-61-404770

CHILD PROTECTOR-TOP™

CHILD PROTECTOR-TOP™



FLYING INSECT

SPRAY

Fast Killing Formula

NO CHILD UNDER 51 MONTHS OLD WAS ABLE TO OPERATE THE VALVE FOLLOWING A STANDARD PROTOCOL TEST.

- Fast knockdown • Killing power

DIRECTIONS: SHAKE BEFORE USING. To spray: hold can upright, insert finger into large opening in the protrusion on the side of the top. Point finger away from body and push button down.



KILLS	HOLD CAN 3 FEET FROM WALLS, FABRICS & FURNITURE WHEN SPRAYING
FLYING INSECTS Flies mosquitoes gnats, flying moths & wasps	Direct spray up into air with a sweeping motion. When room is filled with mist, keep room closed for 15 minutes. Directly spray as many insects as possible. Do not remain in treated areas. Ventilate room thoroughly after treatment.

CAUTION: Keep out of reach of children. Cover fish bowls. Remove birds for one hour after spraying rooms. Foods should be removed or covered during treatment. All food processing surfaces should be covered during treatment or thoroughly cleaned before using. When using the product in these areas, apply only when the facility is not in operation.

WARNING! Contents under pressure. Do not puncture, use or store near heat or open flame. Exposure to temperatures above 120° F or in sun or discarding can in fire or incinerator may cause bursting.

SHELL CHEMICAL COMPANY, A Division of Shell Oil Company, SAN RAMON, CALIFORNIA 94583

CAUTION: KEEP OUT OF REACH OF CHILDREN.

See additional cautions on back

NET WT. 12 1/4 OZ.

TM SHELL TRADEMARK

ACTIVE INGREDIENTS: d trans Allethrin (21% of total weight of Cinerin 1), 0.26%; Piperonyl butoxide, 0.90%; Nonyl bicycloheptene dicarboximide, 0.50%

INERT INGREDIENTS, 98.40%. TOTAL 100% (Equivalent to 0.72% (Butylarbitol) and 0.18% of related compounds.)

EPA REG. NO. 201-321 AA
EPA EST 11525-IL-1 ACD-1720 8/74



F G H I J

CUSTOMER SHELL CHEMICAL CO.

ENG 61-404770 FCY 068

SIZE 2 1/2 X 1 1/4

LAYOUT 1-11-60-10

INDEX NO

DT 1-1-74

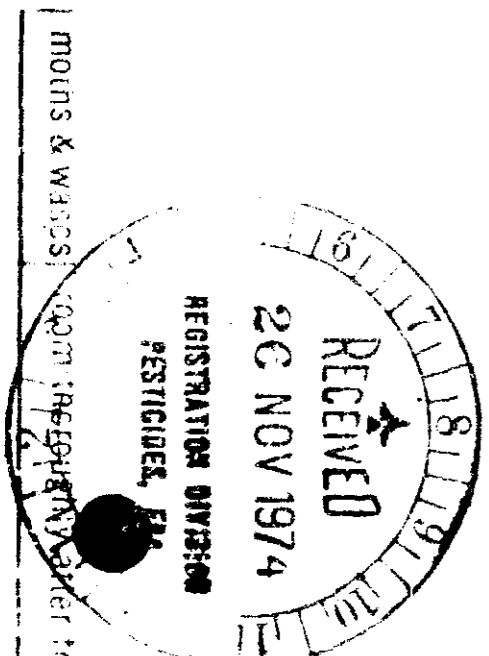
CE 1-1-74

ST 1-1-74

COLORS

YELLOW-RED-BLUE+BLACK ON A W/C

ARTIST 9043 CUST



MOUSE & WASPS ROOM PREVENTION