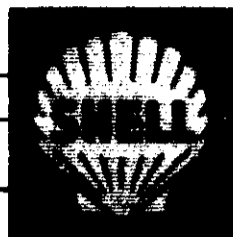
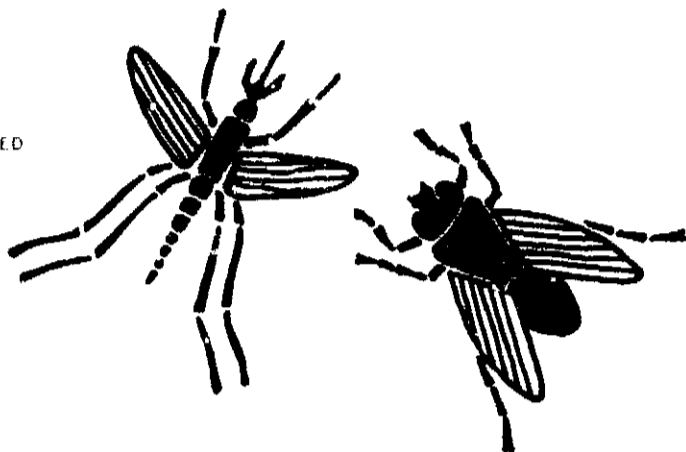


SOLID YELLOW



SOLID RED



SOLID BLUE

# FLYING INSECT

## KILLER

### Fast Killing Formula

**CAUTION: KEEP OUT OF REACH OF CHILDREN**  
See directions and cautions on back.

**NET WT. 12 1/4 OZ.**

**NO CHILD UNDER 51 MONTHS OLD WAS ABLE TO OPERATE THE VALVE FOLLOWING STANDARD PROTOCOL TEST.**

**DIRECTIONS: SHAKE BEFORE USING.** To spray hold can upright, insert finger into large opening in the protrusion on the side of the top. Point finger away from body and push button down.



KILLS	HOLD CAN 3 FEET FROM WALLS, FABRICS AND FURNITURE WHEN SPRAYING
<b>FLYING INSECTS:</b> Flies, mosquitoes, gnats, flying moths, wasps.	Direct spray at individual insects or close doors and windows and spray upward in a sweeping motion to fill the room with mist. Six to ten seconds of spraying is enough for an average room (1000 cu. ft.). It is not necessary to spray insects directly with this procedure - the mist will kill them. Keep room closed for at least fifteen minutes after spraying. Do not remain in treated areas and ventilate the area after treatment is completed.
<b>CRAWLING INSECTS:</b> Roaches, Ants, Spiders, Waterbugs, Crickets, Silverfish, Centipedes, Sowbugs, and Fleas.	Direct spray at exposed insects. Spray into cracks and crevices, under and behind furniture and large appliances, openings, around pipes, and under sinks and other secluded areas where insects hide. Spray ant trails and areas around door sills and window frames. Repeat as necessary.

**CAUTION:** Keep out of reach of children. Do not spray food or food products. Do not spray household pets. Cover fish tanks.

Foods should be removed or covered before treatment. All food processing surfaces should be covered during treatment or thoroughly cleaned before using. When using this product in these areas, apply only when facility is not in operation.

**WARNING:** Contents under pressure. Do not puncture. Do not use or store near heat or open flame. Exposure to temperatures above 120°F may cause bursting. Never throw container into fire or incinerator.

**ACTIVE INGREDIENTS:** Pyrethrins, 0.20%; Piperonyl Butoxide, Technical\*, 1.00%; Petroleum Distillate, 8.60%; **INERT INGREDIENTS 90.20%; TOTAL 100.00%** (contains 0.1% sodium nitrite.) \*Equivalent to 0.80% (butylcarbityl) (6-propyl piperonyl) ether and to 0.20% of related compounds.)

EPA Reg. No. 201-311

ACD-202A 1-72

SHELL CHEMICAL COMPANY, A Division of Shell Oil Company, Agricultural Division, SAN RAMON, CALIFORNIA 94583

ALL COPY UNLESS OTHERWISE INDICATED IS SOLID BLACK

201-311

**ACCEPTED**

**FEB 02 1973**

THE FEDERAL INSECTICIDE  
FUNGICIDE AND RODENTICIDE ACT  
EPA REGISTRATION REGISTERED  
ED UNDER NO. ... SUBJECT  
TO ATTACHED COMMENTS.