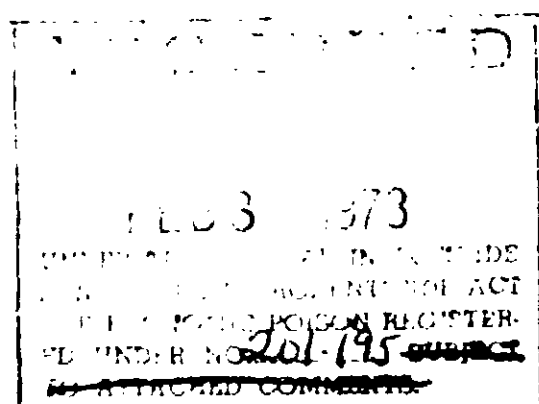




GARDONA® 75 WETTABLE POWDER Insecticide



ACTIVE INGREDIENTS	BY WEIGHT
2-Chloro-1-(2,4,5-trichlorophenyl) vinyl dimethyl phosphate	75 %
INERT INGREDIENTS	25 %
EPA Reg. No. 201-195 AA	TOTAL 100 %

CAUTION! KEEP OUT OF REACH OF CHILDREN
See other precautions below.

GENERAL DIRECTIONS

GARDONA® 75 Wettable Powder Insecticide is suitable for use as a foliar spray in conventional ground sprayers, low pressure knapsack sprayers and/or aircraft sprayers. For foliage applications, mix the required amounts of GARDONA® 75 Wettable Powder Insecticide in sufficient water to provide uniform coverage. Keep spray mixture well agitated.

USE AND DIRECTIONS FOR APPLICATION

Crop	Insect	Pounds GARDONA 75	Remarks
FRUIT: Apples, Pears	Codling moth, Red-banded leaf roller, Plum curculio, Tarnished plant bug, Apple maggot, EUROPEAN APPLE SAWFLY, Fruit tree leaf roller	1/2 to 1	Apply specified dosage, depending upon the severity of the insect infestation, per 100 gallons of water as a dilute spray,* using not more than 800 gallons of finished spray per acre. Repeat as necessary with the first application at petal fall. Do not apply within 7 days of harvest. Do not permit livestock to graze on orchard cover crops. GARDONA® 75 WP may cause russetting on Golden Delicious apples under some conditions.
	Pear psylla (except in areas of phosphate resistance)	1	Apply specified dosage per 100 gallons of water as a dilute spray,* using not more than 800 gallons of finished spray per acre. Use a summer spray only and in combination with summer oil in accordance with local recommendations. Do not apply within 7 days of harvest.
Cherries	Fruit flies Peach twig borer, Plum curculio, Tarnished plant bug, Lesser peach tree borer	1/2 to 3/4 1/2 to 1	Apply specified dosage, depending upon the severity of the insect infestation, per 100 gallons of water as a dilute spray,* using not more than 600 gallons of finished spray per acre. Time applications for fruit flies with adult emergence. Repeat applications as necessary. Do not apply to cherries within 7 days of harvest.
Peaches	Peach twig borer	1	Make 1 application of specified dosage per 100 gallons of water no later than pink bud stage.

Cranberries	Cranberry fruitworm, Cherry fruitworm, Sparanothis fruitworm, Cranberry weevil	2	Apply specified dosage, depending upon the severity of the insect infestation, per 100 gallons of water as a dilute spray, using not more than 100 gallons of finished spray per acre. Repeat applications as necessary. Do not apply within 5 days of harvest. Use limited to Eastern United States.
VEGE- TABLES Tomatoes	Tomato fruitworm, Tomato pinworm, Armyworms, Cutworms	1 to 1 1/2	Apply specified dosage per acre, depending upon the severity of the insect infestation, in not more than 100 gallons of water per acre as a finished spray. Repeat application as necessary. May be applied to the day of harvest. Use limited to the West Coast and Southeastern United States.

* This GARDONA 75 WP dosage is calculated for conventional ground sprayers. When lower volumes of spray are applied per acre as with low-pressure, low-volume mist type equipment or by aircraft, increase concentration of GARDONA 75 WP in spray mixture in order to apply an amount per acre equivalent to a dilute spray. The increase should be proportional to the concentration to be used as shown in the following table.

Pounds of GARDONA 75 WP Per 100 Gallons of Water		
Dilute Spray	2x	3x
0.5 to 1.0	1.0 to 2.0	1.5 to 3.0

CAUTIONS IN USING

CAUTION! KEEP OUT OF REACH OF CHILDREN. Avoid contact with skin. Wash thoroughly after using and before eating and smoking. If material gets in eyes, wash with plenty of water for 15 minutes. Harmful if swallowed. Avoid contamination of feed and foodstuffs. Apply this product only as specified on this label. This product is toxic to fish. Keep out of lakes, streams or ponds. Do not contaminate fish bearing water by cleaning of equipment or disposal of wastes.

This product is highly toxic to bees exposed to direct treatment or residues on crops. Protective information may be obtained from your Cooperative Extension Service.

Do not reuse empty container. Destroy it by burying with wastes or by burning. Stay away from smoke fumes.

NOTICE OF WARRANTY

SHELL CHEMICAL COMPANY MAKES NO WARRANTY OF MERCHANTABILITY, FITNESS FOR ANY PURPOSE, OR OTHERWISE, EXPRESS OR IMPLIED, concerning this product or its use, which extend beyond the use of the product under normal conditions in accord with the statements made on this label.

NET WEIGHT: 3 LBS.

SHELL CHEMICAL COMPANY, A Division of Shell Oil Company, AGRICULTURAL DIVISION, SAN RAMON, CA. 94583