

AREA CONTAINED WITHIN BLACK LINE IS SOLID RED  
COPY CONTAINED WITHIN BLACK LINE IS SOLID WHITE

**Can Can™**  
**INSECTICIDE**

AREA CONTAINED WITHIN BLACK LINE IS SOLID YELLOW

For  
Plastic & Metal  
Garbage Cans

CENTER OF SHELL EMBLEM IS SOLID YELLOW



COPY CONTAINED WITHIN BLACK LINE IS SOLID WHITE

AREA CONTAINED WITHIN BLACK LINE IS SOLID RED

**Can Can™**

AREA CONTAINED WITHIN BLACK LINE IS SOLID YELLOW

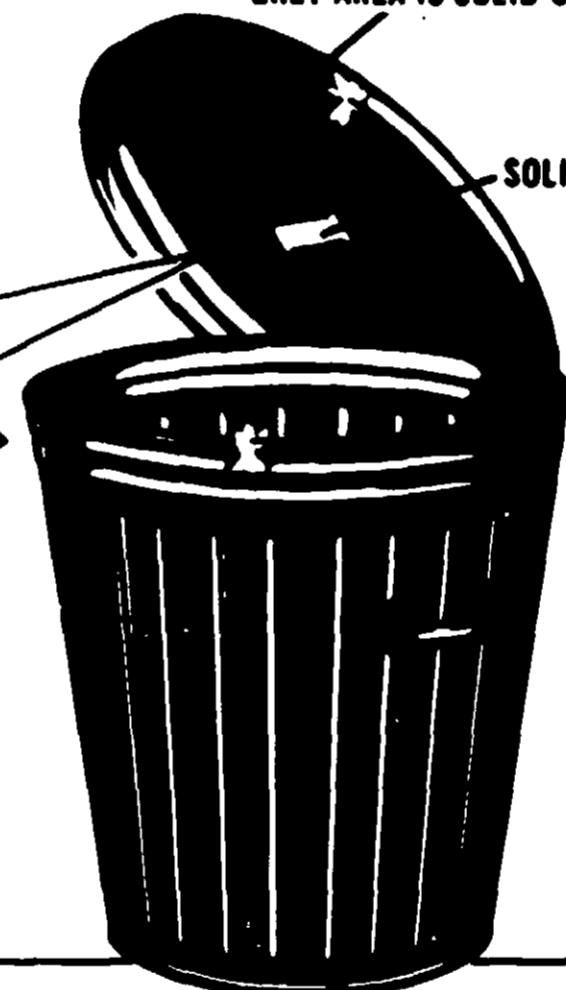
For  
Plastic & Metal  
Garbage Cans

**INSECTICIDE**

**INSECTICIDE**  
**FOR PLASTIC & METAL GARBAGE CANS**

GREY AREA IS SOLID SILVER

**Kills  
Flies, Ants, Gnats,  
& Roaches**



SOLID RED

AREA CONTAINED WITHIN BLACK LINE IS SOLID YELLOW

SOLID RED

EFFECTIVE • CONVENIENT  
WORKS CONTINUOUSLY INSIDE CAN  
FOR UP TO 3 MONTHS

**CAUTION:** Keep out of reach of children. See back panel for other caution statements.

NET WEIGHT: 0.75 OUNCE  
NET CONTENTS: One Insecticide Unit & One Holder



**Can Can™**  
**INSECTICIDE**

For  
Plastic & Metal  
Garbage Cans

SOLID RED

AREA CONTAINED WITHIN BLACK LINE IS SOLID SILVER

AREA CONTAINED WITHIN BLACK LINE IS SOLID YELLOW

**INSECTICIDE**

One insecticide unit attached to the underside of the lid of an average size garbage can will control flies, ants, gnats, and roaches for up to three months. Keep the lid on the garbage can. DO NOT OPEN FOIL ENVELOPE UNTIL READY FOR USE.

**DIRECTIONS FOR USE**

1. Use enclosed sandpaper to thoroughly sand a flat portion of undersides, both new and used, where holder is to be placed.
2. Wipe sanded area only, using a clean, dry rag or paper towel.
3. Remove insecticide unit from envelope by cutting along bottom at grooves of holder.
4. Peel paper cover from adhesive backing on holder. Do not touch a paper cover.
5. Use palm of hand to firmly press assembled holder to sanded area for at least ten seconds. Do not change position of unit once contact is made.

ACTIVE INGREDIENTS: 2,2-dichlorovinyl dimethyl phosphate, 19.2%\*; relative inert ingredients: 80.0%w; Total 100.0%w. \*Equivalent to 20.0%w Techn

**CAUTION: KEEP OUT OF REACH OF CHILDREN**

Do not get in mouth; harmful if swallowed. After prolonged storage, a white film may form on the unit. Do not get liquid in eyes. Wash hands thoroughly with soap and water after handling. Do not place in hospital or clinic rooms, such as patient rooms, or operating or emergency areas. Do not use in any room where infants, children, or the elderly will be present for any extended period of confinement. Do not use in kitchen areas where food is prepared or served.

EPA Reg. No. 201-185 AA

SHELL CHEMICAL COMPANY, A Division of Shell Oil Company, SAN RAMO, TEXAS

Use of the packaged insecticide product is licensed under Shell's U.S. Patents 2,831,318; 2,831,319; 2,831,320; 2,831,321; 2,831,322; 2,831,323; 2,831,324; 2,831,325; 2,831,326; 2,831,327; 2,831,328; 2,831,329; 2,831,330; 2,831,331; 2,831,332; 2,831,333; 2,831,334; 2,831,335; 2,831,336; 2,831,337; 2,831,338; 2,831,339; 2,831,340; 2,831,341; 2,831,342; 2,831,343; 2,831,344; 2,831,345; 2,831,346; 2,831,347; 2,831,348; 2,831,349; 2,831,350; 2,831,351; 2,831,352; 2,831,353; 2,831,354; 2,831,355; 2,831,356; 2,831,357; 2,831,358; 2,831,359; 2,831,360; 2,831,361; 2,831,362; 2,831,363; 2,831,364; 2,831,365; 2,831,366; 2,831,367; 2,831,368; 2,831,369 for use as an insecticide generator only. Not to be taken internally.

**Can Can™**  
**INSECTICIDE**

**Can Can™**

AREA CONTAINED WITHIN BLACK LINE IS SOLID YELLOW

For  
Plastic & Metal  
Garbage Cans

CENTER OF SHELL EMBLEM IS SOLID YELLOW

SOLID RED



COPY CONTAINED WITHIN BLACK LINE IS SOLID WHITE

AREA CONTAINED WITHIN BLACK LINE IS SOLID RED

AREA CONTAINED WITHIN BLACK LINE IS SOLID SILVER

CENTER OF SHELL EMBLEM IS SOLID YELLOW

SOLID RED



**INSECTICIDE**  
**FOR PLASTIC & METAL GARBAGE CANS**

**Kills  
Flies, Ants, Gnats,  
& Roaches**

AREA CONTAINED WITHIN BLACK LINE IS SOLID YELLOW

**EFFECTIVE • CONVENIENT**  
**WORKS CONTINUOUSLY INSIDE CAN**  
**FOR UP TO 3 MONTHS**



GREY AREA IS SOLID SILVER

SOLID RED

For  
Plastic & Metal  
Garbage Cans

**INSECTICIDE**

**INSECTICIDE**

One insecticide unit attached to the underside of the lid of an average size garbage can will control flies, ants, gnats, and roaches for up to three months. Keep the lid on the garbage can. DO NOT OPEN FOIL ENVELOPE UNTIL READY FOR USE.

For  
Plastic & Metal  
Garbage Cans

AREA CONTAINED WITHIN BLACK LINE IS SOLID YELLOW

**DIRECTIONS FOR USE**

1. Use enclosed sandpaper to thoroughly sand a flat portion of underside of plastic or metal lids, both new and used, where holder is to be placed.
2. Wipe sanded area only, using a clean, dry rag or paper towel.
3. Remove insecticide unit from envelope by cutting along bottom and insert the unit into grooves of holder.
4. Peel paper cover from adhesive backing on holder. Do not touch adhesive after removing paper cover.
5. Use palm of hand to firmly press assembled holder to sanded area on lid. Apply pressure for at least ten seconds. Do not change position of unit once contact is made.

ACTIVE INGREDIENTS: 2,2-dichlorovinyl dimethyl phosphate, 19.2%\*; related compounds 0.8%\*; INERT INGREDIENTS: 80.0%w; Total 100.0%w. \*Equivalent to 20.0%w Technical VAPONA® Insecticide.

**CAUTION: KEEP OUT OF REACH OF CHILDREN**

Do not get in mouth; harmful if swallowed. After prolonged storage, a small amount of liquid may form on the unit. Do not get liquid in eyes. Wash hands thoroughly with soap and water after handling. Do not place in hospital or clinic rooms, such as patient rooms, wards, nurseries, operating or emergency areas. Do not use in any room where infants, the sick or aged are or will be present for any extended period of confinement. Do not use in kitchens, restaurants or areas where food is prepared or served.

EPA Reg. No. 201-185 AA

ACL-1743

SOLID RED

SHELL CHEMICAL COMPANY, A Division of Shell Oil Company, SAN RAMON, CALIFORNIA 94583

Use of the packaged insecticide product is licensed under Shell's U.S. Patents 2,956,073, 3,116,201 and 3,318,769 for use as an insecticide generator only. Not to be taken internally by humans or animals.

**Can Can™**  
**INSECTICIDE**

For  
Plastic & Metal  
Garbage Cans

AREA CONTAINED WITHIN BLACK