

## DEXOL ACTI-DIONE PM<sup>®</sup> ROSE FUNGICIDE

### DIRECTIONS FOR USE

It is a violation of Federal law to use this product in a manner inconsistent with its labeling.

**DEXOL ACTI-DIONE PM<sup>®</sup>** is a fungicide which controls powdery mildew and rust on roses and powdery mildew on philoxeranthus, chrysanthemums, tuberous begonias, euonymus, honeysuckle, crape myrtle, and deciduous magnolias. **DEXOL ACTI-DIONE PM<sup>®</sup>** will prevent infection by the fungi which cause rust and mildew, and will also eradicate established infections of powdery mildew. **DEXOL ACTI-DIONE PM<sup>®</sup>** does not leave an unsightly residue on the foliage.

**When to Apply**—The first spray should be applied when mildew or rust appear, or a series of protective sprays can be started early in the season before the development of rust or mildew. Sprays should be repeated as necessary, normally every 7 days or every 3 to 5 days if the season is severe.

**DEXOL ACTI-DIONE PM<sup>®</sup>** can be used as follows:

**Roses (except ramblers)**—Use 2 level tbsp. per gallon of water. When mixed with other pesticides as a protective spray for roses before mildew and rust appear, use 1 tbsp. per gallon of water.

**Rambler roses and other ornamentals**—Use 5 tbsp. per gallon of water.

**How to Apply**—Add **DEXOL ACTI-DIONE PM<sup>®</sup>** slowly to water in pressure spray tank or hose on sprayer bottle while stirring. When mixing with other chemicals, first add **DEXOL ACTI-DIONE PM<sup>®</sup>** to water and then add the other materials. Uniformly spray leaves and stems until they are thoroughly wet. For best results spray on bright sunny days. Prepare fresh spray mixture daily.

**Compatibility**

**DEXOL ACTI-DIONE PM<sup>®</sup>** may be applied with most of the commonly used insecticides and fungicides used on roses and other ornamentals. However, until the compatibility is established under local conditions, it is suggested that mixtures of **DEXOL ACTI-DIONE PM<sup>®</sup>** and other pesticides be tried on a limited area or number of plants. Do not mix **DEXOL ACTI-DIONE PM<sup>®</sup>** with chloroform or alkaline materials such as lime.

### PRECAUTIONARY STATEMENTS HAZARDS TO HUMANS AND DOMESTIC ANIMALS CAUTION

Harmful if swallowed, inhaled or absorbed through the skin. Avoid breathing spray mist. Avoid contact with skin, eyes or clothing. Wash thoroughly after handling. In case of contact, immediately flush eye or skin with plenty of water for at least 15 minutes.

### ENVIRONMENTAL HAZARDS

This pesticide is toxic to fish and wildlife. Use with care when applying in areas frequented by wildlife or adjacent to any body of water. Keep out of lakes, streams or ponds. Do not apply when weather conditions favor run off or drift from target area. Do not contaminate water, food or feed by storage, disposal or cleaning of equipment.

### STORAGE AND DISPOSAL

Do not reuse empty container. Wrap container and put in trash collection.

**NOTICE:** Seller makes no warranty expressed or implied concerning the use of this product other than indicated on the label. Buyer assumes all risk of use and/or handling of this material when such use and/or handling is contrary to label instructions.

DEXOL INDUSTRIES  
Torrance, Calif. 90501

EPA Reg. No. 192-137  
EPA Est. 182-CA-1

ACCEPTED

AUG 6 1981

Under the Federal Insecticide,  
Fungicide, and Rodenticide Act,  
as amended, for the pesticide  
registered under  
EPA Reg. No. 192-137



## Dexol ACTI-DIONE PM<sup>®</sup> Rose Fungicide

### Controls:

- Powdery Mildew and Rust on Roses
- Powdery Mildew on Certain Other Ornamentals

### ACTIVE INGREDIENTS

0.027% w/w  
C<sub>12</sub>H<sub>17</sub>N<sub>3</sub>O<sub>6</sub> (3,2,3,5-tetramethyl-2-oxo-1,2,3,4-tetrahydro-2H-pyridine-2,4-dione) 99.973% w/w

### INERT INGREDIENTS

TOTAL 100.000% w/w

### CAUTION

KEEP OUT OF REACH OF CHILDREN  
SEE BACK PANEL FOR ADDITIONAL  
PRECAUTIONARY STATEMENTS

NET WEIGHT 5 OZ.

## DEXOL ACTI-DIONE PM ROSE FUNGICIDE

### DIRECTIONS FOR USE

It is a violation of Federal law to use this product in a manner inconsistent with its labeling.

**DEXOL ACTI-DIONE PM** is a fungicide which controls powdery mildew and rust on roses and powdery mildew on phlox, zinnias, chrysanthemums, tuberous begonias, euonymus, non-suckle, crage myrtle, and deciduous magnolias. **DEXOL ACTI-DIONE PM** will prevent infection by the fungi which cause rust and mildew and will also eradicate established infections of powdery mildew. **DEXOL ACTI-DIONE PM** does not leave an unsightly residue on the foliage.

**When to Apply**—The first spray should be applied when mildew or rust appear or a series of protective sprays can be started early in the season before the development of rust or mildew. Sprays should be repeated as necessary, normally every 7 days or every 3 to 5 days if disease is severe.

**DEXOL ACTI-DIONE PM** can be used as follows:

**Roses (except ramblers)**—Use 2 level tbsp per gallon of water. When mixed with other pesticides as a protective spray for roses (before mildew and rust appear) use 1 tsp per gallon of water.

**Rambler roses and other ornamentals**—Use 5 tsp per gallon of water.

**How to Apply**—Add **DEXOL ACTI-DIONE PM** slowly to water in pressure spray tank or hose on sprayer bottle while stirring. When mixing with other chemicals, first add **DEXOL ACTI-DIONE PM** to water and then add the other materials. Uniformly spray leaves and stems until they are thoroughly wet. For best results, spray on bright sunny days. Prepare fresh spray mixture daily.

Compatibility

**DEXOL ACTI-DIONE PM** may be applied with most of the commonly used insecticides and fungicides used on roses and other ornamentals. However, until the compatibility is established under local conditions, it is suggested that mixtures of **DEXOL ACTI-DIONE PM** and other pesticides be tried on a limited area or number of plants. Do not mix **DEXOL ACTI-DIONE PM** with chloroform or solvent materials such as lime.

### PRECAUTIONARY STATEMENTS

#### HAZARDS TO HUMANS AND DOMESTIC ANIMALS

##### CAUTION

Harmful if swallowed, inhaled or absorbed through the skin. Avoid breathing spray mist. Avoid contact with skin, eyes or clothing. Wash thoroughly after handling. In case of contact, immediately flush eye or skin with plenty of water for at least 15 minutes.

#### ENVIRONMENTAL HAZARDS

This pesticide is toxic to fish and wildlife. Use with care when applying in areas frequented by wildlife, or adjacent to any body of water. Keep out of lakes, streams or ponds. Do not apply when weather conditions favor run off or drift from target area. Do not contaminate water, food or feed by storage, disposal or cleaning of equipment.

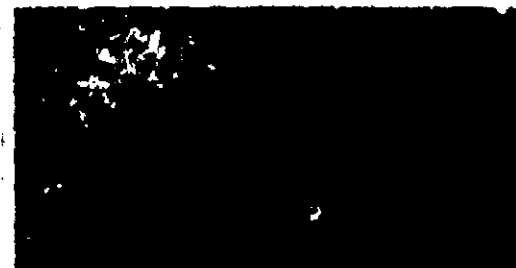
#### STORAGE AND DISPOSAL

Do not reuse empty container. Wrap container and put in trash collection.

**NOTICE:** Seller makes no warranty, expressed or implied, concerning the use of this product other than indicated on the label. Buyer assumes all risk of use and/or handling of this material when such use and/or handling is contrary to label instructions.

**DEXOL INDUSTRIES**  
Torrance, Calif. 90501

EPA Reg. No. 192-137  
EPA Est. 192-CA-1



## DEXOL ACTI-DIONE PM Rose Fungicide

### Controls:

- Powdery Mildew and Rust on Roses
- Powdery Mildew on Certain Other Ornamentals

### ACTIVE INGREDIENTS:

Cyanoacrylate 3.027% w/w  
3,12,13,5,4-methyl-2-pyridylmethyl (piperazine)  
INERT INGREDIENTS 96.973% w/w

TOTAL 100.000% w/w

### CAUTION

KEEP OUT OF REACH OF CHILDREN  
SEE BACK PANEL FOR ADDITIONAL  
PRECAUTIONARY STATEMENTS

NET WEIGHT 5 OZ

ACCE

AUG 6 1981

Under the Federal Insecticide,  
Fungicide, and Rodenticide Act  
as amended, for the pesticide  
registered under  
EPA Reg. No. 192-137