

**FOR RATS** — Put 2 to 4 table-  
 spoons of bait in a container where  
 they can feed unobserved.  
 Feeding should continue until all signs of  
 infestation have stopped. Replace contaminated  
 spoiled bait.

**FOR MICE** — Bait should be placed in  
 locations not accessible to children, pets  
 domestic animals, or in tamper proof  
 bait boxes.

**FOR RATS** Place at least 4oz of bait per  
 infestation and maintain a continuous supply for  
 at least 10 days.

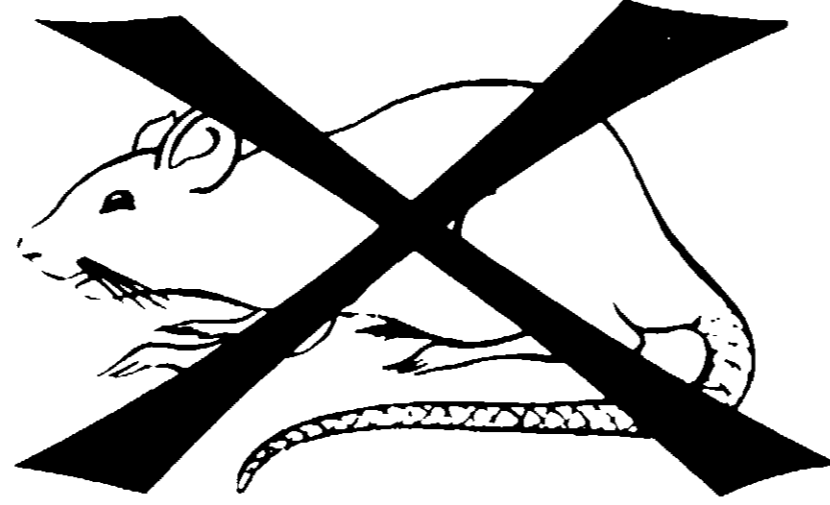
**FOR MICE** Place 1/4 to 1/2 oz of bait at  
 infestation and maintain a  
 continuous supply for at least 10 days.

Effective control of rats and mice.

They will not become bait shy and will never realize that they are taking poison. Be sure you have enough bait on hand to give them continuous feeding before you start your campaign.



# RAT KILLER



**CAUTION:** Protect children, livestock and pets from bait. This product contains an anti-coagulant chemical (PIVAL) which if taken internally ~~may~~ reduce the clotting ability of the blood and internal hemorrhage may result. If Destruxol RAT KILLER is accidentally eaten, give a teaspoonful of salt in a glass of warm water to induce vomiting and continue until vomit fluid is clear. Call a physician immediately.

**FOR THE PHYSICIAN:** When a human has ~~ingested~~ ingested this product, blood transfusions combined with intravenous injections and oral doses of Vitamin K are indicated as in the case of hemorrhage caused by over-dose of dicumarol.

<b>ACTIVE INGREDIENTS</b>	
2 Pivalyl-1, 3-Indandione	0.025%
<b>INERT INGREDIENTS (Bait)</b>	99.975%

USDA Reg. No. 192-54