

149-14

12/05/2005

1/8

Please read instructions on reverse before completing form.

Form Approved. OMB No. 2070-0060.



United States Environmental Protection Agency Washington, DC 20460

Registration Amendment X Other

OPP Identifier Number 306995

Application for Pesticide - Section I

1. Company/Product Number 149-14

2. EPA Product Manager George LaRocca

3. Proposed Classification None Restricted

4. Company/Product (Name) Senoret Chemical Company, Inc./ SL-3

PM# 13

5. Name and Address of Applicant (Include ZIP Code) Senoret Chemical Company, Inc. c/o Delta Analytical Corp. 7910 Woodmont Ave. Suite 1000 Bethesda MD 20814

6. Expedited Review. In accordance with FIFRA Section 3(c)(3)(b)(i), my product is similar or identical in composition and labeling to:

NOTIFICATION

EPA Reg. No. Product Name DEC - 5 2005

Section - II

- Amendment - Explain below
Resubmission in response to Agency letter dated
Notification - Explain below.
Final printed labels in response to Agency letter dated
Me Too Application.
Other - explain below.

Explanation: Use additional page(s) if necessary. (For section I and Section II.)

Notification under PR Notice 98-10 to reformat the directions for use into an alternate table format.

This notification is consistent with the provisions of PR Notice 98-10 and EPA regulations at 40 CFR 152.46, and no other changes have been made to the labeling or the confidential statement of formula of this product. I understand that it is a violation of 18 U.S.C. Sec. 1001 to willfully make any false statement to EPA. I further understand that if this notification is not consistent with the terms of PR Notice 98-10 and 40 CFR 152.46, this product may be in violation of FIFRA and I may be subject to enforcement action and penalties under sections 12 and 14 of FIFRA.

Section - III

1. Material this Product will be Packaged in:

Table with 4 columns: Child-Resistant Packaging, Unit Packaging, Water Soluble Packaging, 2. Type of Container. Includes checkboxes for Yes/No and fields for Unit Package wgt. and No. per container.

3. Location of Net Contents Information (Label/Container) and 4. Size(s) of Retail Container.

5. Location of Label Direction (On Label/On Labeling accompanying product) and 6. Manner In Which Label Is Affixed to Product (Lithograph/Paper glued/Stenciled/Other).

Section - IV

1. Contact Point (Complete items directly below for identification of individual to be contacted, if necessary, to process this application.)

Contact information for Cristina Griffin, Agent for Senoret Chemical Company, Inc., Telephone No. 301-652-5495.

Certification

I certify that the statements I have made on this form and all attachments thereto are true, accurate and complete. I acknowledge that any kind of knowingly false or misleading statement may be punishable by fine or imprisonment or both under applicable law.

2. Signature (Handwritten signature of Cristina Griffin)

3. Title Agent for Senoret Chemical Company, Inc.

4. Typed Name Cristina Griffin

5. Date November 7, 2005

6. Date Application Received (Stamped)

2/8

NOTIFICATION
DEC - 5 2005

SL-3

[Alternate brand name:Terro® Ant Killer Plus Multi-Purpose Insect Control Outdoor]

- [Kills Insects in Lawns]
- [Lawn & Garden Insect Control]
- [Treats Up to 5,000 (10,000) (15,000) Sq. Ft.]
- [Controls Home Invading Pests]
- [Protects Your Home From Invading Pests]
- [10 Pounds Treats 5,000 sq. Ft.]
- [Controls Surface and Foliage Feeding Pests]
- [For Grass and Dichondra Lawns]
- [Contains Synthetic Pyrethroid]
- [For Outdoor Use on Home Lawns]
- [Contains Permethrin]
- [Ready-To-Use]
- [Easy to Use Shaker Bag!]
- [Resealable Bag]
- [Kills Cockroaches, Ants, Spiders, Fleas, Ticks and other listed insects!]
- [For Perimeter Treatment Around Your House Foundation]
- [Kills: ants, armyworms (including fall, yellow striped), bear tick, bermudagrass mites, bill bugs (adult), black legged tick, boxelder bugs, brown dog ticks, centipedes, chinch bugs, clover mites, cockroaches, crickets, cutworms, darkling ground beetles, deer tick (*Ixodes dammini*), digger wasps, essex skipper, European crane fly larvae, field crickets, fiery skipper, fire ants, flea beetle (in dichondra), fleas, grasshopper, hyperodes (turfgrass weevil), Japanese Beetle (adult), lawn moths, leafhoppers, lone star tick, silverfish & firebrats, sod webworms, sowbugs, spiders, spittlebugs, springtails, ticks, vegetable weevils (*in dichondra*), western black legged tick (*ixodes pacificus*)]
- [Provides contact and [long lasting insect control] or [residual control for up to 4 weeks]

KEEP OUT OF REACH OF CHILDREN

CAUTION

See Additional Precautions on back of bag [or on side panel]

ACTIVE INGREDIENT:

Permethrin.....	0.5%
OTHER INGREDIENTS:.....	99.5%
TOTAL	100.0%

NET CONTENTS _____

FIRST AID	
If in Eyes:	<ul style="list-style-type: none"> • Hold eye open and rinse slowly and gently with water for 15-20 minutes. Remove contact lenses, if present, after the first 5 minutes, then continue rinsing eye. • Call a poison control center or doctor for treatment advice.
Have the product container or label with you when calling a poison control center or doctor, or going for treatment.	

PRECAUTIONARY STATEMENTS

Hazard to Humans & Domestic Animals

CAUTION. Causes moderate eye irritation. Avoid contact with eyes or clothing. Wash thoroughly with soap and water after handling and before eating, drinking, chewing gum, or using tobacco.

ENVIRONMENTAL HAZARDS

This product is extremely toxic to fish. Do not apply directly to water. Drift and runoff from treated areas may be hazardous to aquatic organisms in treated areas. Do not contaminate water when disposing of equipment washwaters.

STORAGE AND DISPOSAL

Storage: Store product in its original container in a cool, dry locked place out of the reach of children.

Disposal: Use product until container is empty. If empty: Do not reuse this container. Place in trash or offer for recycling if available. If partly filled: Call your local solid waste agency or 1-800-CLEANUP for local disposal instructions. Never place unused product down any indoor or outdoor drain.

Manufactured for:
Senoret Chemical Co.
St. Louis, MO 63122-6334
1-800-837-7644
www.terro.com

EPA Reg. No. 149-14

EPA Est. No. _____

DIRECTIONS FOR USE

It is a violation of federal law to use this product in a manner inconsistent with its labeling. Food utensils such as teaspoons and measuring cups should not be used for food purposes after use with pesticides. Keep children and pets off treated areas until this material is washed into turf and grass is dry. Not for use on plants being grown for sale or other commercial use or for commercial seed production or for use on sod farms or in nurseries.

READ ENTIRE LABEL. USE STRICTLY IN ACCORDANCE WITH LABEL PRECAUTIONARY STATEMENTS AND DIRECTIONS.

[Band treatments are recommended around house foundations and spot applications are made to ant mounds and wasp nests.]

[Use the following introductory information and General Use Directions if lawn instructions are used on the label.] [SL-3 is recommended for the control of lawn insects, fleas and ticks on lawns in residential areas. Repeated applications are made as a broadcast treatment with a spreader to lawns, under shrubbery and other ornamental and turf grass areas.

GENERAL USE DIRECTIONS:

1. [Step #1] Determine size of area to be treated—measure and multiply length times width.
2. [Step #2] Determine appropriate spreader setting using chart.
3. [Step #3] Treat as directed—thorough coverage is important. Water in where indicated.]

Treatment Areas	Pests	Use Rate	How to Use
SPOT TREATMENT	Ants nesting outdoors including: Acrobat, Argentine, Big Headed, Cornfield, Field, Harvester, Leafcutter, Little Black, Pavement and Pyramid Ants	Product should be applied to thoroughly cover the nest (1 to 2 teaspoons) and sprinkled gently with water.	<ul style="list-style-type: none"> • If possible, it is best to try to locate nest and treat this first. • Nests will usually be found in the ground but may be concealed under stones, boards, slabs or in stumps or logs. • In addition to treating ant nests or mounds, entry points of buildings (used by ants) and the soil surface along the perimeter of the building should be treated.
	Imported Fire Ants	Apply 1 cup over, and 2 feet around each fire ant mound.	<ul style="list-style-type: none"> • Immediately after application, water the granules into the soil gently with a light sprinkling to avoid disturbing the colony. • Use at least 1 gallon of water per mound, but no more than 2 gallons. • Use of high pressure watering equipment may disturb the colony and cause migration of the ants, thus reducing the effectiveness of treatment. • Apply in cool weather (65-80°F), or in early morning or late evening for best results. • Treat new mounds as they appear.
BAND (PERIMETER) TREATMENT AROUND HOUSE FOUNDATION	Ants, Boxelder Bugs, Brown Dog Ticks, Centipedes, Cockroaches, Clover Mites, Crickets, Field Crickets, Fleas, Sowbugs, Spiders, Springtails (Collembola) and Ticks	Treat at a rate of 1 lb. per 500 sq. ft. or 2 lbs. per 1,000 sq. ft.	<ul style="list-style-type: none"> • To help prevent infestation of buildings, apply a 6 foot band of granules next to the house foundation. • Distribute granules uniformly. • Water lightly after application.

4/8

FLEA AND TICK CONTROL (OUTDOORS)

In summer months, fleas and ticks frequently become established in lawns and pet resting areas surrounding the home. For best control of Fleas and Ticks (including but not limited to Bear Tick, Black-legged Tick, Brown Dog Tick, Deer Tick (*Ixodes dammini*), Lone Star Tick, Western Black-legged Tick, Wood Tick), A regular treatment program should be followed. Treat once a month when pests first appear in late spring (May-June) and continue until late summer (September - October). Fall temperatures below 50°F decrease pest activity. Eliminating weeds around the home and mowing lawns frequently reduces the hiding places for these pests.

Note: Dogs, cats, their kennel or bedding area should also be treated with a registered product. In addition, if fleas and ticks are indoors on carpets or pet resting areas, use a registered product, ideally in combination with an insect growth regulator. It is very important that all three sites - outdoors, indoors and also the pet be treated with appropriate labeled products to achieve satisfactory control. If any of these areas is not treated, it could serve as a source of reinfestation of the entire premises.

SOD WEBWORMS (CRAMBUS SPP)

Sod Webworms are the light brown caterpillars 1/4 to 3/4 inch long, that hide in the grass during the day and feed on the grass blades at night. Adult Webworms, usually referred to as Lawn Moths (about 1 inch in length with long snout) emerge from the grass at dusk. They fly over the lawn laying eggs that later hatch into destructive caterpillars. Damage appears first as small brown spots which, if not treated, may rapidly develop into large brown areas of severely damaged or dead grass. If Lawn Moths (Sod Webworm Adults) are noticed in large numbers at dusk, or at first sign of damage to lawn, treat entire lawn evenly.

OVERALL LAWN TREATMENT FOR GRASS AND DICHONDRA LAWNS

To control Ants, Armyworms (including Fall, Yellow-striped), Bermudagrass Mites, Bill bugs (adult), Boxelder Bugs, Centipedes, Chinch Bugs, Clover Mites, Cockroaches, Crickets, Cutworms, Darkling Ground Beetles, Digger Wasps, Essex Skipper, European Crane Fly larvae, Field Crickets, Fiery Skipper, Flea Beetle (*in dichondra*), Grasshopper, Hyperodes (Turfgrass Weevil), Japanese Beetle (adult), Lawn Moths, Leafhoppers, Silverfish & Firebrats, Sod Webworms, Sowbugs, Spiders, Spittlebugs, Springtails, Vegetable Weevils (*in dichondra*) - Apply this product uniformly to home lawns, under shrubbery and other ornamental recreational turf grass. Treat when insects first appear using granules at

the rate of 2 pounds per 1,000 sq. ft. or, for heavy lawns including St. Augustine grass, 3 pounds per 1,000 sq. ft. using a fertilizer spreader. See spreader setting chart below. To help obtain uniform distribution, apply one-half required amount of product in one direction, then apply the balance at a right angle. Immediately after application, water the lawn lightly.

European Crane fly larvae (Leatherjackets) - the best time to apply is in May or June when the insects are young.

Chinch Bugs - Start treatments when temperatures reach 80°F or above. A second application may be necessary in 6 weeks if insect activity continues.

SPREADER SETTINGS

Spreader Make & Model	Settings to Deliver	
	Grass 2 lbs / 1000 Sq. Ft.	St. Augustine 3 lbs / 1000 Sq. Ft.
Cyclone Broadcast	3	5
Greenview Jet Spred III	4	6
Greenview Drop Spred III	3	5
Republic Drop EZ530	6.5	8
Republic Broadcast E2540	2	4
Scotts AG3	6	7
Scotts SG3	4	5
Scotts EG3	24	26
Scotts PF4	6	7
Craftsman Broadcast 1922	5.5	7
Craftsman Drop 1927	5.5	7

Note: Spreader settings given are approximate and variation can occur between identical models. User should calibrate spreader by accurately weighing a few pounds into your spreader and applying to a measured area. Then adjust spreader setting if necessary to assure correct rate of application.

[Alternate format for directions]

Treatment Areas	Pests
<p>OVERALL LAWN TREATMENT FOR GRASS AND DICHONDRA LAWNS Apply uniformly to home lawns, under shrubbery and other ornamental recreational turf grass.</p> <p>General Use Directions: Determine size of area to be treated-measure and multiply length times width. Determine appropriate spreader setting using chart. Treat as directed-thorough coverage is important. Water in where indicated.</p> <p>Use Rate: Treat when insects first appear using granules at the rate of 2 lbs. per 1,000 sq. ft. or, for heavy lawns including St. Augustine grass, 3 lbs. per 1,000 sq. ft. using a fertilizer spreader. See spreader setting chart.</p> <ul style="list-style-type: none"> • To help obtain uniform distribution, apply one-half required amount of product in one direction, then apply the balance at a right angle. • Water lightly after application. <p>*NOTE: Chinch Bugs – Start treatments when temperatures reach 80°F or above. A second application may be necessary in 6 weeks if insect activity continues. European Crane fly larvae (Leatherjackets) – the best time to apply is in May or June when the insects are young.</p>	<p>Ants, Armyworms (including Fall, Yellow-striped), Bermudagrass Mites, Bill bugs (adult), Boxelder Bugs, Centipedes, *Chinch Bugs, Clover Mites, Cockroaches, Crickets, Cutworms, Darkling Ground Beetles, Digger Wasps, Essex Skipper, *European Crane Fly larvae, Field Crickets, Fiery Skipper, Flea Beetle (<i>in dichondra</i>), Grasshopper, Hyperodes (Turfgrass Weevil), Japanese Beetle (adult), Lawn Moths, Leafhoppers, Silverfish & Firebrats, Sod Webworms, Sowbugs, Spiders, Spittlebugs, Springtails, Vegetable Weevils (<i>in dichondra</i>)</p>
<p>Band (Perimeter) Treatment Around House Foundation Use Rate: Treat at a rate of 1 lb. per 500 sq. ft. or 2 lbs. per 1,000 sq. ft.</p> <ul style="list-style-type: none"> • To help prevent infestation of buildings, apply a 5 foot band of granules next to the house foundation. • Distribute granules uniformly. • Water lightly after application. 	<p>Ants, Boxelder Bugs, Brown Dog Ticks, Centipedes, Cockroaches, Clover Mites, Crickets, Field Crickets, Fleas, Sowbugs, Spiders, Springtails and Ticks</p>
<p>Spot Treatment Use Rate: Apply one cup over, and 2 feet around each fire ant mound.</p> <ul style="list-style-type: none"> • Immediately after application, water the granules into the soil gently with a light sprinkling to avoid disturbing the colony. • Use at least 1 gallon of water per mound, but no more than 2 gallons. • Use of high pressure watering equipment may disturb the colony and cause migration of the ants, thus reducing the effectiveness of the treatment. • Apply in cool weather (65-80°F), or in early morning or late evening for best results. • Treat new mounds as they appear. 	<p>Imported Fire Ants</p>
<p>Spot Treatment Use Rate: Product should be applied to thoroughly cover the nest (1 to 2 teaspoons) and sprinkled gently with water.</p> <ul style="list-style-type: none"> • If possible, it is best to try to locate nest and treat this first. • Nests will usually be found in the ground but may be concealed under stones, boards, slabs, in stumps or logs. • In addition to treating ant nests or mounds, entry points of buildings (used by ants) and the soil surface along the perimeter of the building should be treated. 	<p>Ants nesting outdoors including: Acrobat, Argentine, Big Headed, Cornfield, Harvester, Little Black, Pavement, Leafcutter, Field, and Pyramid Ants</p>

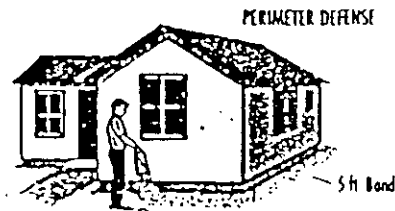
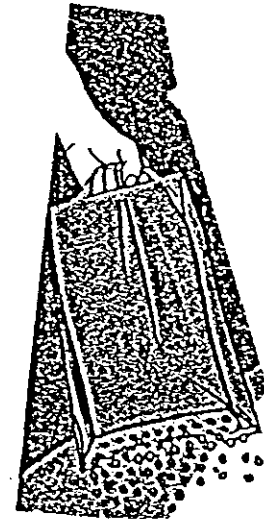
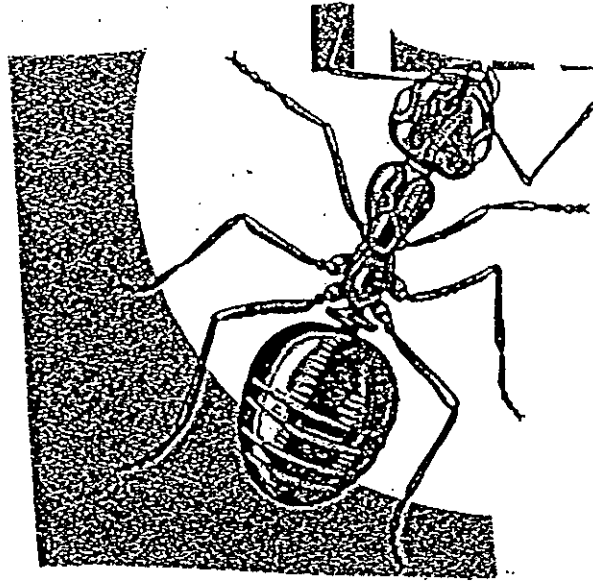
6/8

IMPORTANT: READ BEFORE USE

Read the entire Directions for Use, Conditions, Disclaimer of Warranties and Limitations of Liability before using this product. If terms are not acceptable, return the unopened product container at once. By using this product, user or buyer accepts the following conditions, disclaimer of warranties and limitations of liability.

CONDITIONS: Seller warrants that the product conforms to its chemical description and is reasonably fit for the purposes stated on the label when used in accordance with directions under normal conditions of use, but neither this warranty or any other warranty of Merchantability or Fitness for a Particular Purpose, expressed or implied, extends to the use of this product contrary to label instructions, or under abnormal conditions, or under conditions not reasonably foreseeable to seller, and buyer assumes the risk of any such use.

[] Denotes optional or instructional text in addition to any subset of the directions for use.



878



November 7, 2005

Document Processing Desk (NOTIF)
Office of Pesticide Programs (7504C)
Environmental Protection Agency
Room 266A, Crystal Mall 2
1801 Bell Street
Arlington VA 22202-4501

Attn: George LaRocca, PM 13

**RE: Notification per PR notice 98-10 to reformat directions for use
EPA Reg. No.: 149-14
Product name: SL-3
Company: Senoret Chemical Co., Inc.**

Dear Mr. LaRocca:

On behalf of Senoret Chemical Co., Inc., I am submitting a notification for the product SL-3, EPA Reg. No. 149-14, to reformat the directions for use into an alternate table format. The alternate format is shown on page 4 of the master label enclosed. There are no other changes.

Please use the enclosed stamped self addressed postcard to document acceptance of the notification.

Enclosed are:

1. EPA form 8570-1
2. 1 copy of the revised label
3. Stamped self addressed postcard for EPA to use to notify us of the acceptance of the notification

If you have any questions regarding this submission, please call me at (301) 652-5495. Thank you for your help.

Sincerely,

Cristina N. Griffin
Agent for Senoret Chemical Co., Inc.

Enclosures