



ACCEPTED

May 4, 1975

UNDER THE FEDERAL INSECTICIDE,  
FUNGICIDE AND RODENTICIDE ACT  
FOR ECONOMIC POISON REGISTER  
EPA NUMBER 148-7262

ACCEPTED

*May 7 1962*

ORDER TO SEND TO INSTITUCION  
ENCLOSURE ALL INFORMATION  
FOR BROWNE, ARREST, ARRESTED

14 1962

# CASORON 4H

DICHLORBENIL WEED AND  
GRASS KILLER

HERBICIDE AND HAND SPREADER

NET CONTENTS 5 POUNDS

ACTIVE INGREDIENT:

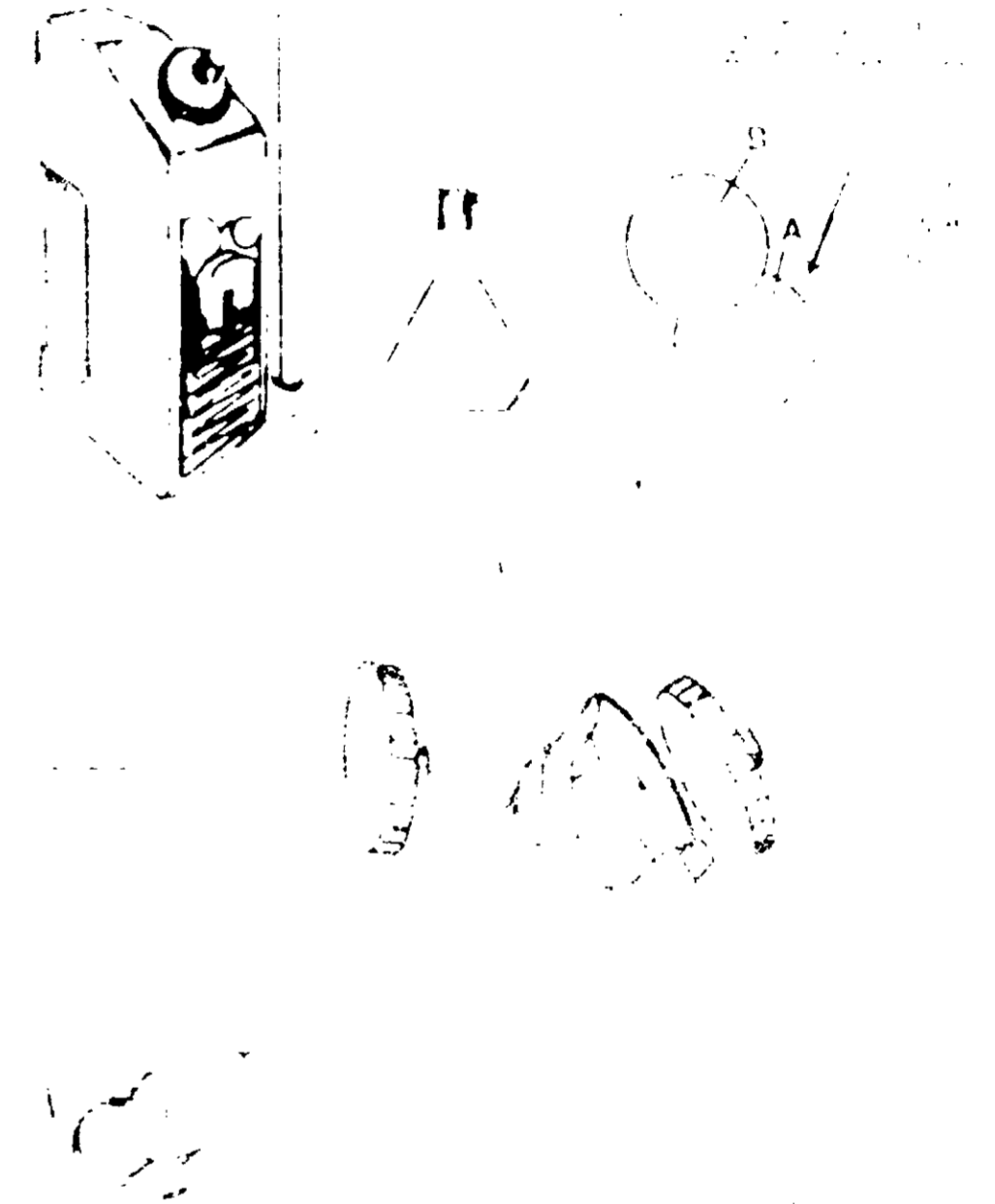
DICHLORBENIL

INERT INGREDIENTS:

SELECTIVE HERBICIDE FOR CONTROL OF  
CLABGRASS FOXTAIL SHEPHERDSPURSE  
HORSETAIL HIGHWEEED QUACKGRASS CANADA  
HISTLE LEAFY SPURGE FESCUE AND CERTAIN  
OTHER ANNUAL AND PERENNIAL WEEDS

**CAUTION**

BEFORE USE READ DIRECTIONS CAUTIONS  
AND NOTICE STATEMENTS CAREFULLY  
HARMFUL IF SWALLOWED



PRECAUTIONS

## PRECAUTIONS

CASORON 4H should not be used on steeply sloping areas as runoff may result in injury to lawn or other plants in adjacent areas. CLOSE CONTAINER TIGHTLY WITH BLANK DISK "A" IN PLACE WHEN NOT IN USE. Store in a dry place. Avoid disturbing soil in treated area as long as weed control is being maintained.

## CAUTION

When applying CASORON 4H to food crops — make a trial application on non-crop area to check that application rate is not excessive. Use rate diagrams to judge trial application rate before applying to food crops. Over application could result in residues in excess of legal tolerances.

## GENERAL DIRECTIONS

### PERENNIAL WEED CONTROL

CASORON 4H is recommended for control of certain perennial weeds such as ARTEMISIA, CANADA THISTLE, CURLY DOCK, FALSEDANDELION, (CATSEAR), FESCUE, LEAFY SPURGE, ORCHARDGRASS, QUACKGRASS, RUSSIAN KNAPWEED, TIMOTHY, WILD ARTICHOKE, WILD ASTER, WILD CARROT, AND YELLOW ROCKET IN ESTABLISHED WOODY ORNAMENTALS, NUTS AND FRUIT and for control in non-crop areas such as around buildings and fences, window wells, landscape and/or foundation plantings, cemetery memorials, golf course ornamentals, and cycle paths.

**SOIL SURFACE TREATMENT:** Apply CASORON 4H as a soil surface treatment in late fall from November 15 to February 15. Old weed growth

should not be removed before application. Do not make surface application to areas which have been cultivated during the fall or summer prior to application.

**INCORPORATED TREATMENT:** Apply CASORON 4H and incorporate immediately after application in late fall or very early spring before May 1.

### ANNUAL WEED CONTROL

CASORON 4H is recommended for control of annual grassy and broadleaved weeds and certain perennial weeds such as: ANNUAL BLUEGRASS (POA ANNUA), BLUEGRASS, BULL THISTLE, CAMPHORWEED, CARPETWEED, CHICKWEED, CITRON MELON, COFFEEWEED, CRABGRASS, CUDWEED, DANDELION, DOGFENNEL, EVENING-PRIMROSE, FIDDLENECK, FLORIDA PURSLANE (PUSLEY), FOXTAIL, GISEKIA, GROUNDSEL, HENBIT, HORSETAIL, JERUSALEMOAK, GOOSE-FOOT, KNOTWEED, LAMBSQUARTERS, MAYPOPS, MILKWEED VINE (MORRENIA ODORATA), MINERS LETTUCE, NATALGRASS, OLD WITCHGRASS, PEPPERGRASS, PINEAPPLEWEED, PLANTAIN, PURSLANE RAGWEED, RED DEADNETTLE, REDROOT PIGWEED, ROSARYPEA, RUSSIAN THISTLE, SHEPHERDSPURSE, SMARTWEED, SPANISHNEEDLES, SPRUCE, TEAWEED, TEXAS PANICUM (HURRAHGRASS), WILD BARLEY, WILD MUSTARD, WILD RADISH, AND YELLOW WOODSORREL.

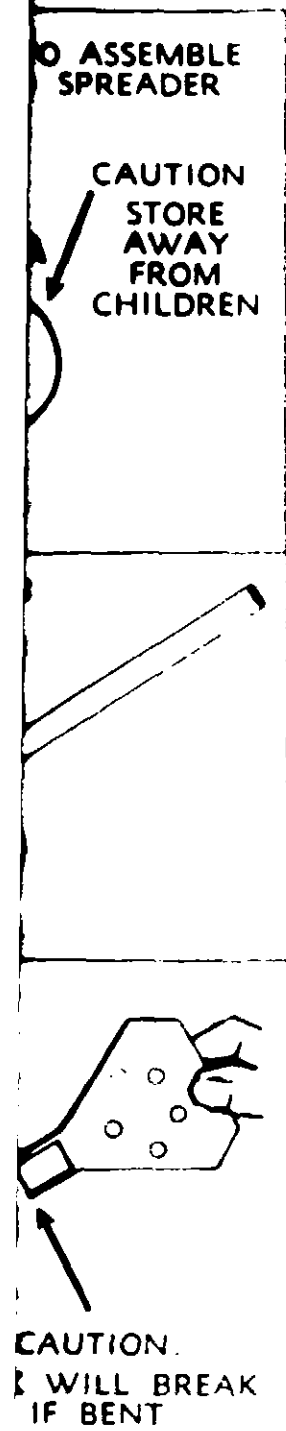
Apply CASORON 4H either in early spring before seeds of annual weeds germinate or after cultivation has removed the growing weeds. Distribute granules uniformly over the soil surface. If treatment is followed by application of  $\frac{1}{2}$  to 1 inch of water by overhead irrigation the lower rates are recommended. Shallow incorporation immediately after application is recommended in southern areas. In other areas, shallow incorporation or sprinkler irrigation is suggested when applications are made during periods of high temperatures.

## FRUIT AND NUTS IN ORCHARDS AND NURSERIES

CASORON 4H may be used on the following crops: do not allow livestock to graze treated orchards:

- A. Almond, Apple, Blueberry, Cherry, Grape, Mango, Nectarine, Peach, Pear, Prune, Plum, Filbert, Pecan (Do not use on pecan seedlings within 6 months of planting), and English Walnut. May be used on bearing, non-bearing and nursery stock. Do not apply within 4 weeks after transplanting. Do not make application within one month of harvest of nuts or stone fruits. Apply  $2\frac{1}{4}$  to  $3\frac{1}{3}$  lbs. per 1000 sq. ft. (100-150 lbs. per acre). Follow General Directions above.
- B. Blackberry and Raspberry: For control of annual weeds follow General Directions above except use only on established plantings and apply  $2\frac{1}{4}$  lbs. per 1000 sq. ft. (100 lbs. per acre). Do not apply during new shoot emergence.
- C. Citrus (bearing and non-bearing oranges, grapefruit, tangerines, lemons, and limes) in groves: Apply  $1\frac{2}{3}$  lbs. to  $3\frac{1}{3}$  lbs. per 1000 sq. ft. (75-150 lbs. per acre) and incorporate immediately to a depth of 1 to 2 inches. Do not apply less than one year after transplanting, do not apply before water ring is removed.

On citrus nurseries CASORON 4H may be used for control of annual weeds in the following citrus root stocks: Cleopatra mandarin, rough lemon, sour orange, and sweet orange. Apply CASORON 4H to weed-free soil at  $2\frac{1}{4}$  to  $3\frac{1}{3}$  lbs. per 1000 sq. ft. (100-150 lbs. per acre). Make first application in early spring after re-



moval of banks, and second in early summer, not less than 90 days after the first. Apply broadcast and irrigate lightly with overhead system (1/4 to 1/2 inch). Do not apply CASORON 4H during 6 months following possible freeze damage on any citrus.

### WOODY ORNAMENTALS, SHELTERBELTS, AND IN NURSERIES

For control of annual weeds CASORON 4H may be used on the plants listed below. Apply 2 1/4 to 3 1/3 lbs. per 1000 sq. ft. (100-150 lbs. per acre), based on area actually treated. Do not apply within 4 weeks after transplanting. Do not use in seed beds, transplant beds, or cutting beds. Follow General Directions above.

For control of perennial weeds listed, apply 3 1/3 to 4 1/2 lbs. per 1000 sq. ft. (150-200 lbs. per acre). Do not apply more than 3 1/3 lbs. per 1000 sq. ft. (150 lbs. per acre) on AZALEA, BOXWOOD, EUONYMUS, FORSYTHIA, HEATHER, HOLLY, IVY, LILAC, LEUCOTHOE. Do not apply more than 3 1/3 lbs. per 1000 sq. ft. (150 lbs. per acre) on plantings less than one year old. Follow General Directions listed above.

Amur Corktree	Crabapple
Arbor Vitae	Deutzia
Ash	Dogwood
Azalea <sup>1</sup>	Eastern Red Cedar
Barberry	Elm
Beauty Bush	Elwood Cypress
Birch	English Walnut
Boxelder	Euonymus
Boxwood	Filbert
Camellia	Flowering Almond
Caragana	Flowering Quince
Cleyera japonica	Forsythia
Cotoneaster	Gardenia
Cottonwood	Goldenrain tree

Hackberry  
Heather  
Holly (Ilex spp.)<sup>2</sup>  
Honeysuckle  
Ivy (Hedera helix)  
Juniper  
Kinnikinnick  
Laurel  
Leucothoe  
Lilac  
Linden  
Locust  
Magnolia  
Maple  
Mock Orange  
Mountain ash  
Nadina  
Oak

<sup>1</sup>Kurume, Mollis, Hardy Hybrid types and hardy native species only.

<sup>2</sup>Except I. crenata, I. rotunda, I. vomitoria.

### NUTSEGE CONTROL

To control nutsedge (nutgrass) on mineral soils in areas on which containers of nursery stock are to be grown or held—and also for control in non-crop areas—apply 5 2/3 to 11 1/4 lbs. per 1000 sq. ft. (250-500 lbs. per acre) and incorporate immediately to a depth of 4-6 inches. Seasonal control of annual weeds will also be obtained. Containers of plants listed above may be placed on treated soil immediately. Do not transplant into treated soil.

### UNDER ASPHALT

For general weed control under asphalt (in areas such as: sidewalks, roadways, parking lots, recreational areas, cycle paths), after final grade

Osmanthus (Holly-olive)  
Pachistima  
Pecan  
Photinia  
Pittosporum  
Poplar  
Privet  
Pyracantha  
Rhododendron  
Rockrose  
Rose  
Russian Olive  
Spirea  
Squaw-carpet  
Weigela  
Willow  
Yew (Taxus)

is achieved, apply 5 2/3 to 6 3/4 lbs. per 1000 sq. ft. (250-300 lbs. per acre). Treated area should be covered with asphalt as soon as possible. For re-surfacing work, existing weeds should be sprayed with a contact herbicide prior to CASORON application.

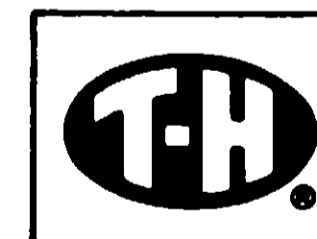
### DECORATIVE TREE BASES

Apply CASORON 4H around the base of trees listed above at the rate of 2 1/4 to 3 1/3 lbs. per 1000 sq. ft. (see diagrams for scatter patterns) then add an impervious layer such as poly film or decorative materials such as wood chips, rock, or asbestos brick. For loose materials re-apply CASORON 4H once each season on top of the material. For solid materials, lift up and re-apply.

### APPLICATION RATE DIAGRAMS

#### NOTICE

**Seller makes no warranty, expressed or implied, concerning the use of this product other than indicated on the label. Buyer assumes all risk of use and/or handling of this material when such use and/or handling is contrary to label instructions.**



**THOMPSON-HAYWARD  
CHEMICAL COMPANY**

P.O. Box 2383, Kansas City, Kansas 66110

er 1000 sq  
area should  
as possible.  
s should be  
r to CASO-

**IES**

se of trees  
1/3 lbs. per  
er patterns  
s poly film  
chips, rock,  
als re-apply  
top of the  
nd re-apply.

**RAMS**

ressed or  
is product  
bel. Buyer  
handling of  
d/or han-  
ructions.

**AYWARD  
MPANY**

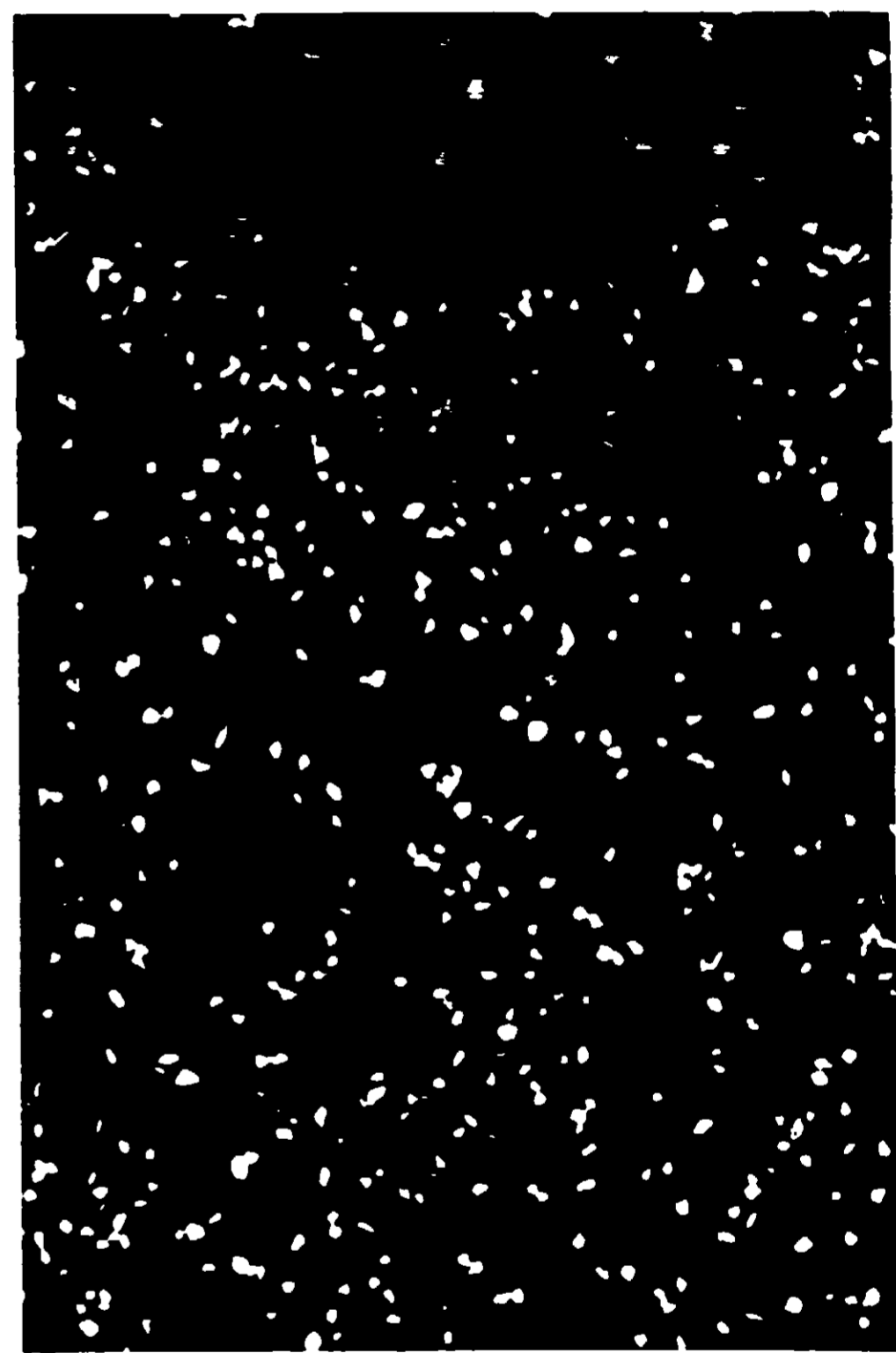
as 66110



2 1/4 #/1000 sq. ft.  
(100 lbs. per acre)



4 1/2 #/1000 sq. ft.  
(200 lbs. per acre)



6 3/4 #/1000 sq. ft.  
(300 lbs. per acre)